

An Overview of WearCheck Oil Analysis Services



the oil speaks.
wearcheck listens.

A photograph of laboratory equipment, specifically a rack filled with numerous small vials, likely used for oil analysis.

**WearCheck International
WebCheck
Private Label Programs
OEM Programs
Fleet Programs
Industrial Programs
Laboratory Overview
Training Services
Contacting WearCheck**

wearcheck international



five decades of experience behind our name

WearCheck is a group of independent laboratories, spanning the globe, dedicated to oil and wear particle analysis. Each member country belongs to WearCheck International (WCI).

our mission

"WearCheck is committed to remain the worldwide leader in oil and wear particle analysis. Our mission is to continually improve all aspects of our business operations so that we may provide the best service possible to our customers. We understand that in order to provide the best service, requires the use of the most modern, and state of the art analytical instrumentation, and recognized standard testing methods and procedures. We will establish and maintain a continuous quality improvement program that is second to none, and create a work environment that enhances learning, innovation, and excellent communication among our employees and customers."



The leader in oil analysis

WearCheck International

Africa, Australia, Europe, North America, South America



The leader in oil analysis

@ Oil Analysis

Client Extranet

Conquer your biggest maintenance challenges

Different sites, different departments, different responsibilities?

Collaborate in one common maintenance workplace.

Different maintenance systems, different maintenance databases?

A common maintenance workspace.

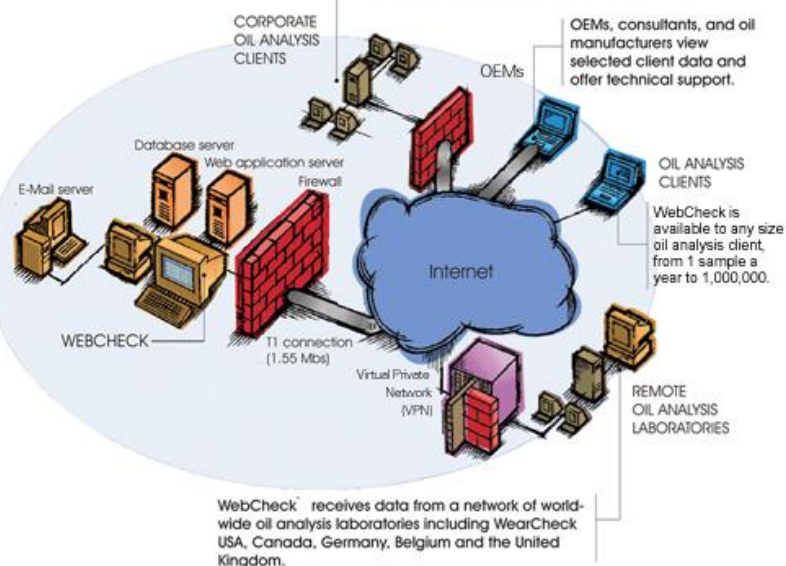
Overload of oil analysis data, poorly organized program, no follow up?

A system to track your oil analysis program.

Maintenance management made easy.

WebCheck® uses your Internet browser to give you access to your sample data. Log on to a secure Web site, search, and track your oil analysis samples, and print sample and management reports all from your Web browser.

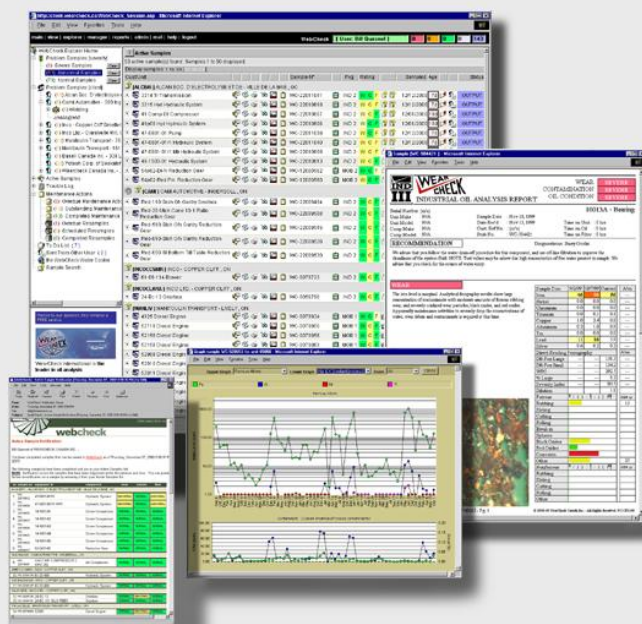
Corporate Clients with many WebCheck accounts network oil analysis and maintenance functions within the organization. Remote plants and branches are linked to central office maintenance databases through WebCheck.



WebCheck allows clients, OEMs and laboratories to work together in a collaborative environment.

With WebCheck you can

- schedule maintenance actions
- manage your equipment
- take and confirm maintenance actions
- review oil analysis results
- generate management reports
- effectively manage your oil analysis program



View oil analysis sample reports, test results, trending graphs as well as recommendations.

Custom Logo Kits & Reports

YOURNAMEHERE
MOBILE OIL ANALYSIS REPORT

Unit Make : 1998 Navistar
Unit Model : 9200 DC
Comp Make : Caterpillar
Comp Model : C-10

Serial No : 8Y502089
Cust Ref No : (in a)
Stub No : WC-0079921

Date Rec'd : Jan 3, 2001
Sample Date : Dec 28, 2000
Diagnostician : D.Muht

RECOMMENDATION
We advise that you check for the source of the coolant leak. We

Customer File Stub
RGA / Job No : Unit Id :
Serial No :
Date Made :
Sample Taken By :
Inquiries: (US) 1-800-237-1389 / (CAN) 1-800-268-2131

501 Madison Avenue
Cary, NC 27513
USA
1-800-237-1389
(919) 378-4102
Fax (919) 378-4050

4161 Starview Cres., Unit 13
Mississauga, ON L5L 5R3
Canada
1-800-268-2131
(905) 668-8000
Fax (905) 668-8005

DEALER NAME :
EQUIPMENT OWNER :
ADDRESS :
CITY/STATE/PROV : ZIP/POSTAL CODE :
ATTN :
PHONE () : FAX () :
Make / Model : MIC Hours :
Serial No :
RGA / Job No :
Unit Id :

COMPONENT SAM
ENGINE / TRANSMISS
SWING BOX / PUMP / C
DIFFERENTIAL / OTH

COMPONENT LOG
FRONT / REAR / LUB

OIL BRAND :
ADDITIVES USED OR :
OIL HOURS :

REASON FOR SAMPL
If sample taken as the n

Which type of report d
If Internet, provide email

The test results are subject to the following restrictions:
1. For oil analysis, the oil must be taken from a clean, dry oil pan.
2. For oil analysis, the oil must be taken from a clean, dry oil pan.
3. For oil analysis, the oil must be taken from a clean, dry oil pan.
4. For oil analysis, the oil must be taken from a clean, dry oil pan.
5. For oil analysis, the oil must be taken from a clean, dry oil pan.
6. For oil analysis, the oil must be taken from a clean, dry oil pan.
7. For oil analysis, the oil must be taken from a clean, dry oil pan.
8. For oil analysis, the oil must be taken from a clean, dry oil pan.
9. For oil analysis, the oil must be taken from a clean, dry oil pan.
10. For oil analysis, the oil must be taken from a clean, dry oil pan.

CONTAMINATION WEAR
OIL CONDITION

SEVERE
SEVERE
NORMAL

52110 - Diesel Engine

Sample Date	8/7/00	10/2/00	11/7/00	Current	UOM
Time on Unit	251882	270916	283019	299740	hrs
Time on Oil	19621	9018	12103	16721	hrs
Time on Ftr	19621	9018	12103	16721	hrs
Oil Maint.	Changed	Changed	Changed	Changed	---
Filter Maint.	Changed	Changed	Changed	Changed	---

Sample Date	8/7/00	10/2/00	11/7/00	Current	Abn
Silicon	38	36	59	39	15
Potassium	106	779	765	232	10
Sodium	135	1270	1406	740	50
Fuel (%)	<2.0	<2.0	<2.0	<2.0	2.0
Glycol (%)	0.0	0.20	0.0	0.12	0.02
Water (%)	<0.1	<0.1	<0.1	<0.1	0.1
Soot (%)	0.9	0.8	0.1	0.3	2.0
Sulfation	68	53	44	70	100
Nitration	64	84	36	81	100

Sample Date	8/7/00	10/2/00	11/7/00	Current	Abn
Iron	70	87	91	39	---
Nickel	0.0	0.0	0.0	0.0	---
Copper	1.0	1.7	---	457	---
Aluminum	0.0	0.0	0.0	0.0	---
Vanadium	0.0	0.0	0.0	0.0	---
Phosphorus	0.0	0.0	0.0	0.0	---
Calcium	0.0	0.0	0.0	0.0	---
Magnesium	0.0	0.0	0.0	0.0	---
Zinc	0.0	0.0	0.0	0.0	---
Barium	0.0	0.0	0.0	0.0	---
Boron	0.0	0.0	0.0	0.0	---
Strontium	0.0	0.0	0.0	0.0	---
Antimony	0.0	0.0	0.0	0.0	---
Lead	0.0	0.0	0.0	0.0	---
Chromium	0.0	0.0	0.0	0.0	---
Manganese	0.0	0.0	0.0	0.0	---
Selenium	0.0	0.0	0.0	0.0	---
Tungsten	0.0	0.0	0.0	0.0	---
Vanadium	0.0	0.0	0.0	0.0	---
Phosphorus	0.0	0.0	0.0	0.0	---
Calcium	0.0	0.0	0.0	0.0	---
Magnesium	0.0	0.0	0.0	0.0	---
Zinc	0.0	0.0	0.0	0.0	---
Barium	0.0	0.0	0.0	0.0	---
Boron	0.0	0.0	0.0	0.0	---
Strontium	0.0	0.0	0.0	0.0	---
Antimony	0.0	0.0	0.0	0.0	---
Lead	0.0	0.0	0.0	0.0	---
Chromium	0.0	0.0	0.0	0.0	---
Manganese	0.0	0.0	0.0	0.0	---
Selenium	0.0	0.0	0.0	0.0	---
Tungsten	0.0	0.0	0.0	0.0	---
Vanadium	0.0	0.0	0.0	0.0	---
Phosphorus	0.0	0.0	0.0	0.0	---
Calcium	0.0	0.0	0.0	0.0	---
Magnesium	0.0	0.0	0.0	0.0	---
Zinc	0.0	0.0	0.0	0.0	---
Barium	0.0	0.0	0.0	0.0	---
Boron	0.0	0.0	0.0	0.0	---
Strontium	0.0	0.0	0.0	0.0	---
Antimony	0.0	0.0	0.0	0.0	---
Lead	0.0	0.0	0.0	0.0	---
Chromium	0.0	0.0	0.0	0.0	---
Manganese	0.0	0.0	0.0	0.0	---
Selenium	0.0	0.0	0.0	0.0	---
Tungsten	0.0	0.0	0.0	0.0	---
Vanadium	0.0	0.0	0.0	0.0	---
Phosphorus	0.0	0.0	0.0	0.0	---
Calcium	0.0	0.0	0.0	0.0	---
Magnesium	0.0	0.0	0.0	0.0	---
Zinc	0.0	0.0	0.0	0.0	---
Barium	0.0	0.0	0.0	0.0	---
Boron	0.0	0.0	0.0	0.0	---
Strontium	0.0	0.0	0.0	0.0	---
Antimony	0.0	0.0	0.0	0.0	---
Lead	0.0	0.0	0.0	0.0	---
Chromium	0.0	0.0	0.0	0.0	---
Manganese	0.0	0.0	0.0	0.0	---
Selenium	0.0	0.0	0.0	0.0	---
Tungsten	0.0	0.0	0.0	0.0	---
Vanadium	0.0	0.0	0.0	0.0	---
Phosphorus	0.0	0.0	0.0	0.0	---
Calcium	0.0	0.0	0.0	0.0	---
Magnesium	0.0	0.0	0.0	0.0	---
Zinc	0.0	0.0	0.0	0.0	---
Barium	0.0	0.0	0.0	0.0	---
Boron	0.0	0.0	0.0	0.0	---
Strontium	0.0	0.0	0.0	0.0	---
Antimony	0.0	0.0	0.0	0.0	---
Lead	0.0	0.0	0.0	0.0	---
Chromium	0.0	0.0	0.0	0.0	---
Manganese	0.0	0.0	0.0	0.0	---
Selenium	0.0	0.0	0.0	0.0	---
Tungsten	0.0	0.0	0.0	0.0	---
Vanadium	0.0	0.0	0.0	0.0	---
Phosphorus	0.0	0.0	0.0	0.0	---
Calcium	0.0	0.0	0.0	0.0	---
Magnesium	0.0	0.0	0.0	0.0	---
Zinc	0.0	0.0	0.0	0.0	---
Barium	0.0	0.0	0.0	0.0	---
Boron	0.0	0.0	0.0	0.0	---
Strontium	0.0	0.0	0.0	0.0	---
Antimony	0.0	0.0	0.0	0.0	---
Lead	0.0	0.0	0.0	0.0	---
Chromium	0.0	0.0	0.0	0.0	---
Manganese	0.0	0.0	0.0	0.0	---
Selenium	0.0	0.0	0.0	0.0	---
Tungsten	0.0	0.0	0.0	0.0	---
Vanadium	0.0	0.0	0.0	0.0	---
Phosphorus	0.0	0.0	0.0	0.0	---
Calcium	0.0	0.0	0.0	0.0	---
Magnesium	0.0	0.0	0.0	0.0	---
Zinc	0.0	0.0	0.0	0.0	---
Barium	0.0	0.0	0.0	0.0	---
Boron	0.0	0.0	0.0	0.0	---
Strontium	0.0	0.0	0.0	0.0	---
Antimony	0.0	0.0	0.0	0.0	---
Lead	0.0	0.0	0.0	0.0	---
Chromium	0.0	0.0	0.0	0.0	---
Manganese	0.0	0.0	0.0	0.0	---
Selenium	0.0	0.0	0.0	0.0	---
Tungsten	0.0	0.0	0.0	0.0	---
Vanadium	0.0	0.0	0.0	0.0	---
Phosphorus	0.0	0.0	0.0	0.0	---
Calcium	0.0	0.0	0.0	0.0	---
Magnesium	0.0	0.0	0.0	0.0	---
Zinc	0.0	0.0	0.0	0.0	---
Barium	0.0	0.0	0.0	0.0	---
Boron	0.0	0.0	0.0	0.0	---
Strontium	0.0	0.0	0.0	0.0	---
Antimony	0.0	0.0	0.0	0.0	---
Lead	0.0	0.0	0.0	0.0	---
Chromium	0.0	0.0	0.0	0.0	---
Manganese	0.0	0.0	0.0	0.0	---
Selenium	0.0	0.0	0.0	0.0	---
Tungsten	0.0	0.0	0.0	0.0	---
Vanadium	0.0	0.0	0.0	0.0	---
Phosphorus	0.0	0.0	0.0	0.0	---
Calcium	0.0	0.0	0.0	0.0	---
Magnesium	0.0	0.0	0.0	0.0	---
Zinc	0.0	0.0	0.0	0.0	---
Barium	0.0	0.0	0.0	0.0	---
Boron	0.0	0.0	0.0	0.0	---
Strontium	0.0	0.0	0.0	0.0	---
Antimony	0.0	0.0	0.0	0.0	---
Lead	0.0	0.0	0.0	0.0	---
Chromium	0.0	0.0	0.0	0.0	---
Manganese	0.0	0.0	0.0	0.0	---
Selenium	0.0	0.0	0.0	0.0	---
Tungsten	0.0	0.0	0.0	0.0	---
Vanadium	0.0	0.0	0.0	0.0	---
Phosphorus	0.0	0.0	0.0	0.0	---
Calcium	0.0	0.0	0.0	0.0	---
Magnesium	0.0	0.0	0.0	0.0	---
Zinc	0.0	0.0	0.0	0.0	---
Barium	0.0	0.0	0.0	0.0	---
Boron	0.0	0.0	0.0	0.0	---
Strontium	0.0	0.0	0.0	0.0	---
Antimony	0.0	0.0	0.0	0.0	---
Lead	0.0	0.0	0.0	0.0	---
Chromium	0.0	0.0	0.0	0.0	---
Manganese	0.0	0.0	0.0	0.0	---
Selenium	0.0	0.0	0.0	0.0	---
Tungsten	0.0	0.0	0.0	0.0	---
Vanadium	0.0	0.0	0.0	0.0	---
Phosphorus	0.0	0.0	0.0	0.0	---
Calcium	0.0	0.0	0.0	0.0	---
Magnesium	0.0	0.0	0.0	0.0	---
Zinc	0.0	0.0	0.0	0.0	---
Barium	0.0	0.0	0.0	0.0	---
Boron	0.0	0.0	0.0	0.0	---
Strontium	0.0	0.0	0.0	0.0	---
Antimony	0.0	0.0	0.0	0.0	---
Lead	0.0	0.0	0.0	0.0	---
Chromium	0.0	0.0	0.0	0.0	---
Manganese	0.0	0.0	0.0	0.0	---
Selenium	0.0	0.0	0.0	0.0	---
Tungsten	0.0	0.0	0.0	0.0	---
Vanadium	0.0	0.0	0.0	0.0	---
Phosphorus	0.0	0.0	0.0	0.0	---
Calcium	0.0	0.0	0.0	0.0	---
Magnesium	0.0	0.0	0.0	0.0	---
Zinc	0.0	0.0	0.0	0.0	---
Barium	0.0	0.0	0.0	0.0	---
Boron	0.0	0.0	0.0	0.0	---
Strontium	0.0	0.0	0.0	0.0	---
Antimony	0.0	0.0	0.0	0.0	---
Lead	0.0	0.0	0.0	0.0	---
Chromium	0.0	0.0	0.0	0.0	---
Manganese	0.0	0.0	0.0	0.0	---
Selenium	0.0	0.0	0.0	0.0	---
Tungsten	0.0	0.0	0.0	0.0	---
Vanadium	0.0	0.0	0.0	0.0	---
Phosphorus	0.0	0.0	0.0	0.0	---
Calcium	0.0	0.0	0.0	0.0	---
Magnesium					

WebCheck OEM Module

VOLVO
On-Line Warranty Enrollment

Submit Warranty machine info | dealer & client info

Machine Information

model: A35D
serial number: 123-A123
warranty period: from 0 hrs to 1000 hrs
send kits in: 1000 hrs increments
warranty begins: 02/01/2003

Warranty Sample Schedule

Hours	Diesel Engine	Transmission	Axle	Drop Box
250	1	0	0	0
500	1	1	0	0
750	1	0	0	0
1000	1	1	3	1
1250	1	0	0	0
1500	1	1	0	0
1750	1	0	0	0
2000	1	2	3	1
2250	1	0	0	0
2500	1	1	0	0
2750	1	0	0	0
3000	1	1	3	1
TOTAL	12	6	9	3

Customer

- HARMONY CONSTRUCTION
- MARTIN K. EBY CONSTRUCTION
- ROYAL EQUIPMENT LEASING
- MARSHON COUNTY HWY COMM
- BAROLD WARREN CONST
- STRONOCO EQUIPMENT
- WINE CLOSS LOGGING
- WINE CLOSS LOGGING
- CITY OF MEYBURN
- S. THIBAUT CONSTRUCTION LTD
- UNB REFRACOTORS
- CLYDEHAST INC.

SHIPPED

VOLVO EC360 S/N 03625
Dealer: SIERRA MACHINERY INC. MARY - EL PASO, TX USA
Customer: ELEPHANT BUTTE IRRIGATION DISTRICT - LAS CRUCES, NM USA
last activity: @

schedule interval	250	500	750	1000	1250	1500	1750	2000	2250
Diesel Engine	TAKEN	TAKEN	TAKEN	TAKEN	TAKEN	SCHEDULED	SCHEDULED	SCHEDULED	SCHEDULED
Hydraulic System									
Pump								SCHEDULED	
Swing Drive								SCHEDULED	
Left Travel								SCHEDULED	
Right Travel								SCHEDULED	
Right Drive								SCHEDULED	

WebCheck makes warranty program administration easy by providing the tools that allow the OEM administrator to register, manage and track equipment under warranty.

WearCheck will tailor an OEM warranty program to meet your needs. From a customized branded program featuring your OEM logo on the Sample Information Form (SIF), Sample Report, and a customized OEM Administrator module within WebCheck. WearCheck brings OEM warranty program administration into the new millennium, by giving appointed OEM Administrators the tools to register, manage, and track equipment on a warranty-based oil analysis program.



WebCheck gives OEMs the tools to manage their warranty programs;

On-Line Warranty Registration – Allows the OEM administrator to generate an equipment registration. New registrations automatically trigger WearCheck to send out sample kits with pre-printed sample labels for the new warranty.

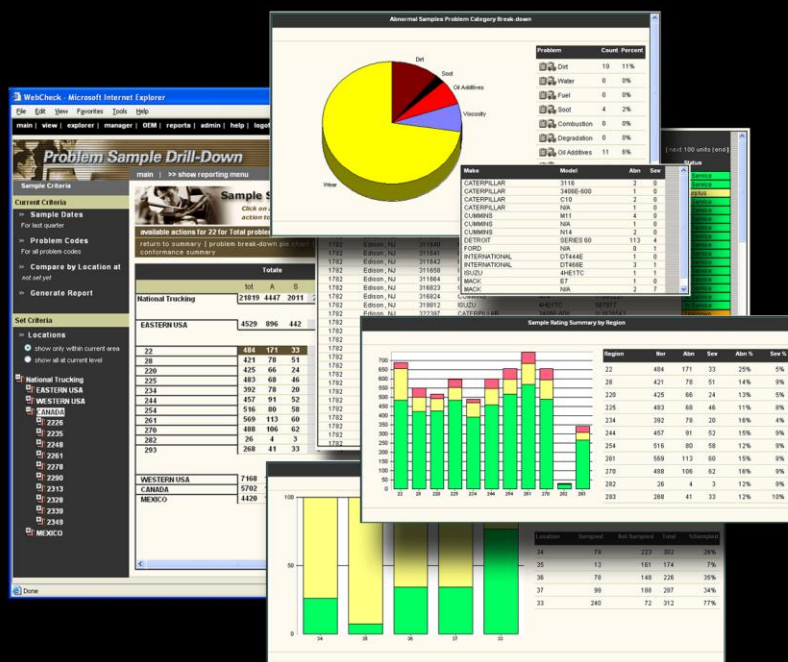
Dealer Management – Allows the OEM administrator to add and modify equipment dealer information.

Model Management – Allows the OEM administrator to add or modify equipment models including sub-components and warranty sampling hours.

Warranty Tracking – Allows the OEM administrator to immediately determine the condition of the equipment and conformance to the warranty sampling program of any warranted unit.



WebCheck Management Reporting Module and Problem Sample Drill-Down



WebCheck makes managing a large fleet oil analysis program simple by providing detailed dashboards with drill-down capabilities. Everything a Fleet Manager requires to identify oil related problems quickly and easily.



Your fleet represents a large investment, and sometimes the difference between profit and loss depends on keeping operating costs **low**. Knowledgeable owners understand the benefit of proper maintenance and care of equipment. WearChecks's oil analysis service detects abnormal equipment condition before that equipment runs into costly repairs and provides the fleet manager with the tools to schedule corrective action before the need for costly repairs.



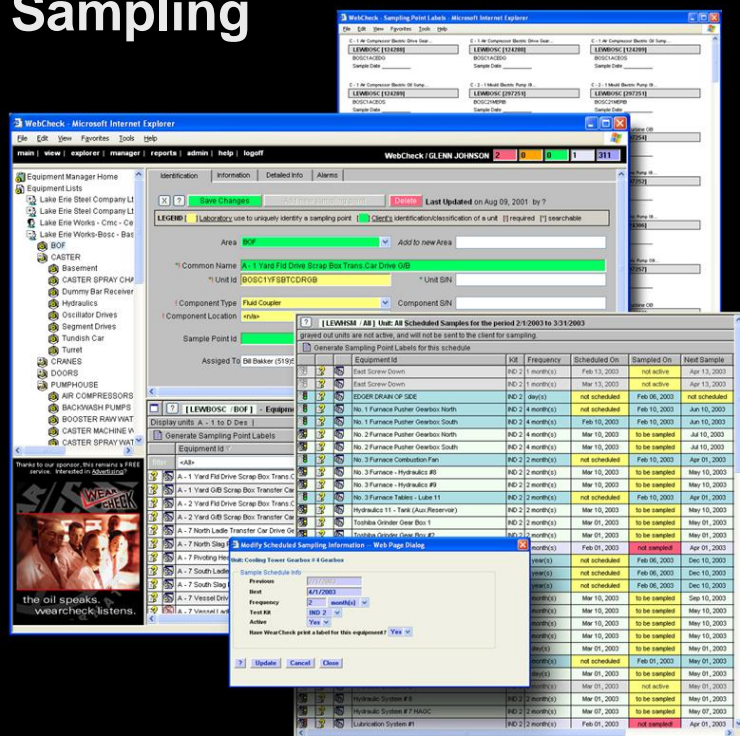
WebCheck gives Fleet Managers the tools to manage their oil analysis program;

Automatic Kit Re-stocking – Fleet Managers have the option of allowing WearCheck to automatically stock all depots when sample volumes fall below a predefined quantity.

Automatic Problem Sample Notification – WebCheck e-mail sample notifications provide instant updates on problem units. This coupled with the collaborative abilities of WebCheck allow monitoring of any number of branch locations distributed across North America.

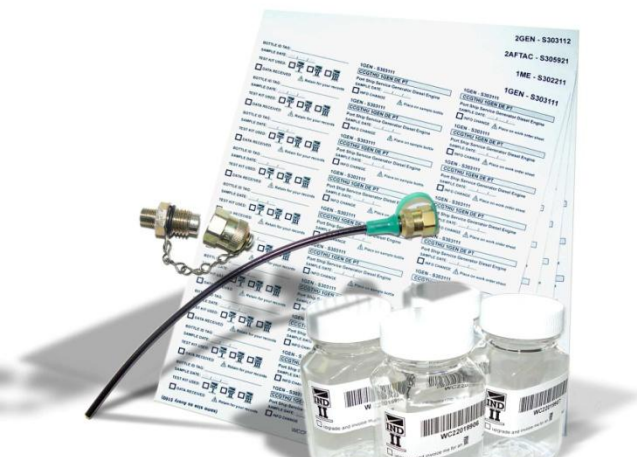
Problem Sample Drill-Down- Allows Fleet Managers to monitor the overall health of their distributed fleet by summarizing oil sample reports into a dashboard with detailed drill-down capabilities.

WebCheck Equipment Manager with Scheduled Sampling



WebCheck makes the plant managers job simple by providing the tools to set-up and track sample schedules, and allows the plant manager to track the status of plant equipment and to manage the equipment database on-line.

Your primary concern as a business is to be profitable. All too often, these days, this requires an increase in profit through a reduction in costs. A well run condition monitoring program will achieve a substantial reduction in manufacturing costs. WearCheck's oil and wear particle analysis packages offer you the tools to manage a condition monitoring program for your industrial systems. Save money by maximizing your oil change out intervals, and by detecting the ingress of contaminants from the manufacturing environment in time to save the oil and avoiding unnecessary wear.



WebCheck gives Plant Managers the tools to manage their oil analysis program;

WebCheck Equipment Manager – Allows the plant manager to register sampling points, select testing packages by equipment, schedule and track oil analysis sampling.

Scheduled Sampling – Once a sample schedule is set-up in the WebCheck Equipment Manager, WearCheck will deliver pre-labelled oil analysis kits just-in-time for sampling on all equipment in the program.

Management Reporting– The WebCheck reporting module allows plant managers to track the success of their oil analysis program through detailed management reports and summaries.

laboratory overview



At WearCheck, oil analysis is not simply an add-on service. It is a partnership with the client encompassing analysis, interpretation and training, with each element being an integral part of the whole.

WearCheck's holistic approach to oil analysis demands the highest technological standards and the highest caliber of suitably qualified and experienced staff. This quest for excellence is reflected in each organization's level of quality.

Routine Oil Testing Methods

Metals by ICP Analysis	ASTM D5185
Viscosity Automatic Method	ASTM D445
Particle Count	ISO 4406:1999
Water by Karl Fischer	ASTM D6304
Acid Number (AN)	ASTM D664
Base Number (BN)	ASTM D4739
Fuel Dilution in Oil	ASTM D3524
Glycol Contamination in Oil	ASTM D2982
Soot level in Oil	JOAP-TSC
Oxidation level of Oil	JOAP-TSC
Sulfation/Nitration level of Oil	JOAP-TSC

Non-Routine Oil Testing Methods

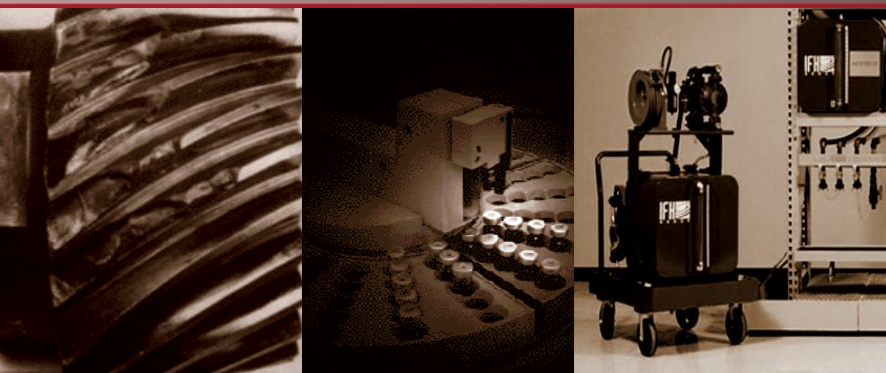
Flash/Fire Point of Oil	ASTM D92
Pour Point of Oil	ASTM D97
Cloud Point of Oil	ASTM D2500
Pentane Insolubles	ASTM D4055

Other Testing Capabilities

Analytical and Direct-Reading Ferrography
Coolant Analysis
Diesel Fuel Analysis
Brake Fluid Analysis

This is only a partial test method list and does not comprise our full analytical capabilities. If you have any other testing requirements, please contact us.





Lubricant Management

What is Lubricant Management

Goals of the Lube Audit

Implementing a Lubricant Management Program

Lube Survey

Selecting an Oil Vendor

Rating Your Current Lube Practices

Developing Lubrication Policies and Manual

Lubricant Storage and Delivery

Safety, Cleanliness and Disposal

Oil Related Problems

New Oil Cleanliness

Mixing of Oils

Lubricant Shelf-Life

Machine Ingress Control

Oil Reclamation

Lubricant Fundamentals

Mineral oil refining

synthetic oils

oil additives

classification of oils

Functions of Lubricating Oil

Lubrication films

Lubricated system wear modes

Overheating of lubricated systems

Common oil contaminants

Fundamentals of Oil Analysis

Oil Analysis tests for Contamination

Oil Analysis tests for Lubricant Degradation

Oil Analysis tests for Wear

Managing an Oil Analysis Program

Benefits and Goals of Oil Analysis

Setting up an OA Program

Purchasing OA Test Kits

Taking Oil Samples

Reviewing Sample Results

Taking and Reviewing Corrective Actions

Monitoring the Progress of your OA Program

WearCheck provides a range of training courses covering oil & wear particle analysis, lubrication management, WebCheck and the management of an oil analysis program.

Courses are conducted regularly at the laboratories, however, customers can bring an oil analysis and/or WebCheck training course on-site to their facility. On-site training courses can be customized to meet a customer's specific training requirements.

A current training schedule can be found at:

<http://www.wearcheck.com/services/training.asp>



All WearCheck training programs make use of detailed color slides, and participant course materials include a comprehensive training manual.

contacting wearcheck

**North America****WearCheck USA**

501 Madison Ave.
Cary, NC 27513
USA
p: +1(919)379-4001
f: +1(919)379-4050

WearCheck Canada Inc.

C8-1175 Appleby Line
Burlington, Ontario
L7L 5H9 Canada
p: +1(905)569-8600
f: +1(905)569-8605

Europe**Alcontrol (UK) Ltd.**

Unit 6, Parc Caer Seion
Conwy LL32 8FA
United Kingdom
p: +44 1492 574750

Tekniker

Avda. Otaola N° 20
C.P. 44
20600 Eibar Guipuzcoa, Spain
p: +34 943.206744
f: +34 943.202757

WearCheck Belgium

713 Bergenseweg
B 1600 St. Pieters-Leeuw
Brussels, Belgium
p: +32 2/365.02.29
f: +32 2/361.34.58

MOL – Hungarian Oil and Gas

H-2922 Komárom
Köölaj, u. 2.
Hungary
p: +36 34/526-492
f: +36 34/346-175

Africa**WearCheck Africa**

P O Box 15108, Westmead, 3608
South Africa
Physical address:
9 le Mans Place, Westmead, SA
p: +27 (31) 7005460
f: +27 (31) 7005471

WearCheck will help you start your oil analysis program with a minimum of delay. Start realizing a return on your oil analysis investment by letting WearCheck design an effective program for you today.

**General Enquiries**

Web site www.wearcheck.com
Web contact info.sales@wearcheck.com
WebCheck www.oilanalysis.net

Membership in WCI

If you are interested in joining the WearCheck International group contact:

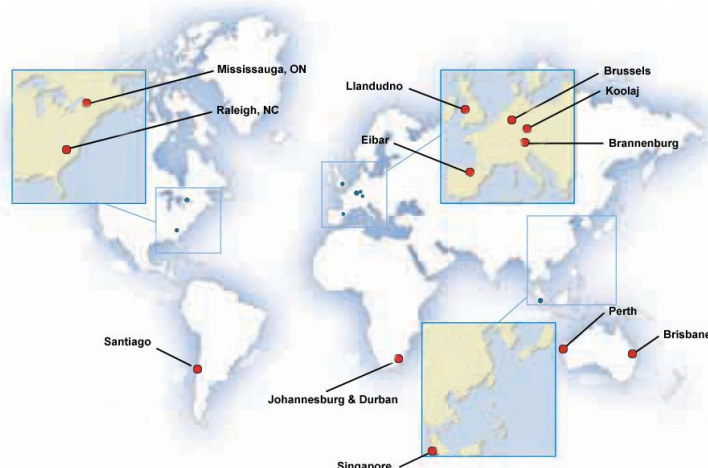
wci.membership@wearcheck.com

You can download a registration form from the following site:

<http://www.wearcheck.com/aboutus/organization.asp>

WearCheck International holds an annual meeting each spring/summer in a selected member country. If you are interested in meeting with WCI please send a request to:

wci.meeting@wearcheck.com



This brochure is available on-line at:

<http://www.wearcheck.com/literature/brochures/wci.pdf>