

Download the App



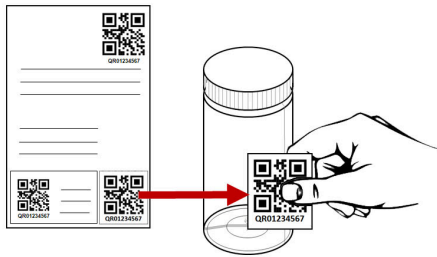
<https://bit.ly/oilapp>



<https://bit.ly/oaplay>

Download the Oil Analysis app from the App Store or Google Play. After installation, use your WebCheck credentials to login to the app.

Take your oil samples



1

Remove the sample label from the sample form and stick to the sample bottle.



2

Take the oil sample as you normally would and re-cap the sample bottle.



3

Ensure that the cap is securely tightened and wipe any excess oil from the sample bottle.

Complete sample submission with the asset tag booklet & the app



4

Using the app, scan the QR code of the machine the sample was taken from. Remove the tracking label from the sample form and stick to the asset log booklet.



5

Next, scan the sample label, and complete the sample information and submit the sample.



1

Login to the app using your WebCheck credentials. The app will cache your machines.



2

Once logged in, click on the "Scan QR Code" button.



3

Locate the machine that was sampled in the asset tag booklet and scan that QR code.



4

The asset is selected & sample submission screen is loaded. Click the "Scan" button.



5

Scan the sample bottle label from your oil sample for the selected machine.



6

The sample is now linked to the machine. Use the "SIMPLE" data entry mode to add info.



7

Select the sample date, take any pictures you want, add a comment if desired, then click the "submit sample" button



8

The sample info has been submitted to the laboratory where the QR code will be scanned, and the sample information automatically retrieved.



9

Submitted samples are listed. To update a samples info slide left. To delete a sample slide right.



EID:3311714

Area
{unassigned}
Machine ID
CHP2
Component
Biogas Engine
Make/Model
CHP2



*Latest sample
tracking label*

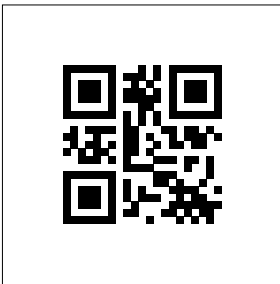


EID:2767045

Area
{unassigned}
Machine ID
CHP2-M0115 (S/N 2209855)
Component
Biogas Engine
Make/Model
MWM TCG2016



*Latest sample
tracking label*

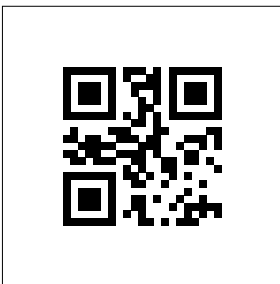


EID:2859720

Area
{unassigned}
Machine ID
CHP2-M114 (S/N 2209855)
Component
Biogas Engine
Make/Model
MWM TCG2012



*Latest sample
tracking label*



EID:3033961

Area
{unassigned}
Machine ID
CHP3 (S/N 2209852)
Component
Biogas Engine
Make/Model
MWM TCG2016



*Latest sample
tracking label*

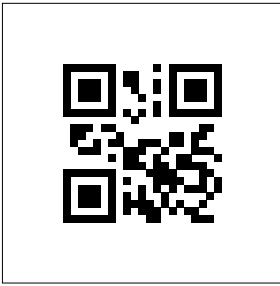


EID:2763728

Area
{unassigned}
Machine ID
CHP3-M0114 (S/N 2209852)
Component
Biogas Engine
Make/Model
MWM TCG2016



*Latest sample
tracking label*



EID:2763729

Area
 {unassigned}
 Machine ID
CHP4-M0116 (S/N 2210062)
 Component
 Front Biogas Engine
 Make/Model
 MWM TCG2016



Latest sample tracking label

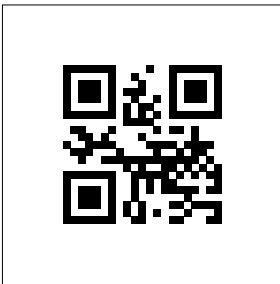


EID:3248855

Area
 {unassigned}
 Machine ID
DRYER
 Component
 Gearbox
 Make/Model



Latest sample tracking label

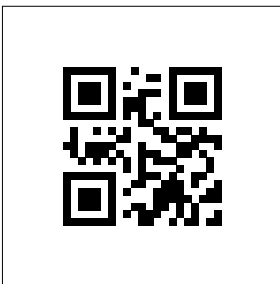


EID:3363228

Area
 {unassigned}
 Machine ID
DRYER 2
 Component
 Gearbox
 Make/Model



Latest sample tracking label

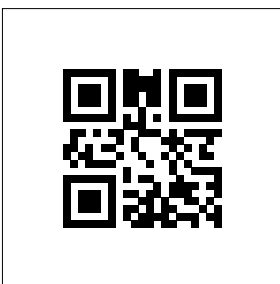


EID:3474160

Area
 {unassigned}
 Machine ID
EUCO 2 MIXER 1
 Component
 1 Gearbox
 Make/Model



Latest sample tracking label

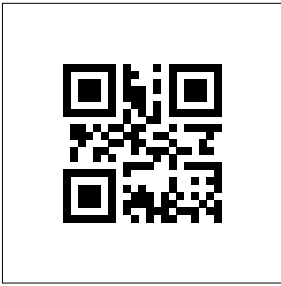


EID:3474161

Area
 {unassigned}
 Machine ID
EUCO 2 MIXER 2
 Component
 2 Gearbox
 Make/Model



Latest sample tracking label



EID:3248852

Area
{unassigned}
Machine ID
EUCO 3 MIXER 1
Component
Gearbox
Make/Model



*Latest sample
tracking label*



EID:3248851

Area
{unassigned}
Machine ID
EUCO 3 MIXER 2
Component
Gearbox
Make/Model



*Latest sample
tracking label*