



OIL ANALYSIS REPORT

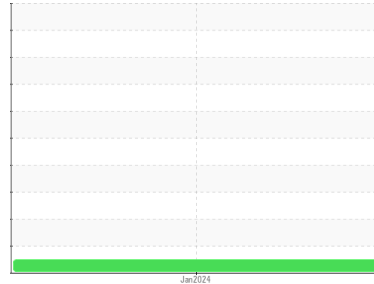
Sample Rating Trend

NORMAL



Area
[FRESH1]
Machine Id
190124G004

Component
Unknown Component
Fluid
TEXACO DELO 400 MGX SAE 15W (--- GAL)



DIAGNOSIS

Recommendation

This is a baseline read-out on the submitted sample.

Wear

{not applicable}

Contamination

{not applicable}

Fluid Condition

{not applicable}

SAMPLE INFORMATION

	method	limit/base	current	history1	history2
Sample Number	Client Info		PP	---	---
Sample Date	Client Info		19 Jan 2024	---	---
Machine Age	hrs	Client Info	0	---	---
Oil Age	hrs	Client Info	0	---	---
Oil Changed	Client Info		N/A	---	---
Sample Status			NORMAL	---	---

CONTAMINATION

	method	limit/base	current	history1	history2
Water	WC Method		NEG	---	---

SIMULATED DISTILLATION

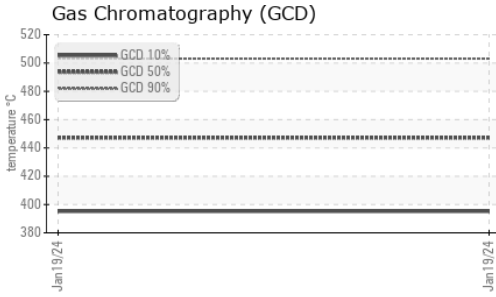
	method	limit/base	current	history1	history2
(GCD) % < 335°C	°C	ASTM D2887*	1.56	---	---
(GCD) Initial Boiling Point	°C	ASTM D2887*	162.9	---	---
(GCD) 5% Distillation Point	°C	ASTM D2887*	378.0	---	---
(GCD) 10% Distillation Point	°C	ASTM D2887*	395.2	---	---
(GCD) 20% Distillation Point	°C	ASTM D2887*	412.0	---	---
(GCD) 30% Distillation Point	°C	ASTM D2887*	424.9	---	---
(GCD) 40% Distillation Point	°C	ASTM D2887*	436.3	---	---
(GCD) 50% Distillation Point	°C	ASTM D2887*	447.2	---	---
(GCD) 60% Distillation Point	°C	ASTM D2887*	458.0	---	---
(GCD) 70% Distillation Point	°C	ASTM D2887*	469.3	---	---
(GCD) 80% Distillation Point	°C	ASTM D2887*	482.9	---	---
(GCD) 90% Distillation Point	°C	ASTM D2887*	503.1	---	---
(GCD) FBP% Distillation Point	°C	ASTM D2887*	576.3	---	---

SAMPLE IMAGES

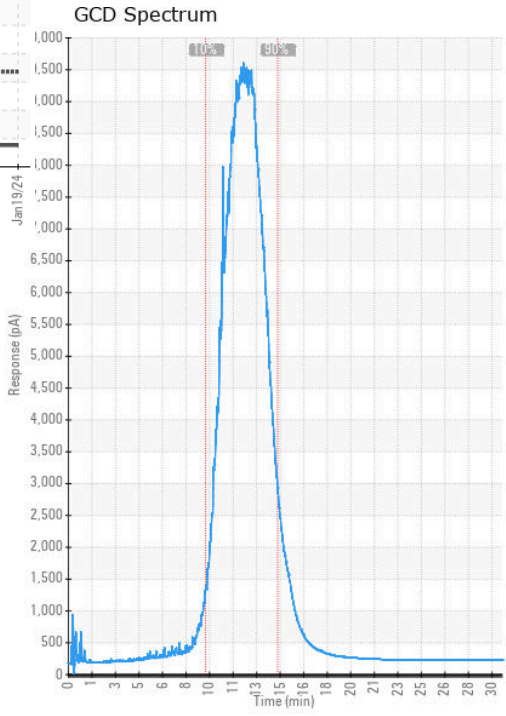
	method	limit/base	current	history1	history2
Color				<i>no image</i>	<i>no image</i>
Bottom				<i>no image</i>	<i>no image</i>



OIL ANALYSIS REPORT



GRAPHS



Laboratory : WearCheck - C8-1175 Appleby Line, Burlington, ON L7L 5H9
Sample No. : PP
Lab Number : 02610791
Unique Number : 5711877
Test Package : TEST (Additional Tests: GC-PercFuel, GCD)

Alpha Maintenance Systems
 WearCheck Belgium, 713 Bergensesteenweg
 St.-Pieters-Leeuw, ZZ
 BE B-1600
 Contact: Kenny De Smet
 Kenny.DESMET@alphams.eu
 T:
 F: 3(202)361-3458

To discuss this sample report, contact Customer Service at 1-800-268-2131.
 Test denoted (*) outside scope of accreditation, (m) method modified, (e) tested at external lab.
 Validity of results and interpretation are based on the sample and information as supplied.