

System: AIR COMPRESSOR
Sump Capacity (k): 50 L
Lubricant (k): ATLAS COPCO ROTO Z ISO 68
Labocodenbr: 109897-OA.9
Samplenummer: 12.10.23 O004
Labelnummer: 00706110
Date sample drawn (k): 18.09.2023
Sampling: by client

Customer (k): ATLAS COPCO RENTAL EUROPE
Luc Despeghel
Address (k): INDUSTRIEWEG 1F
B- 2850 BOOM
Your customer (k): 201131/13948
Your ref. (k): F/201131/13948/ZT250

Diagnostic



Oil



Pollution



Wear



We notice a high zinc content. We notice free water and brown particles on the bottom of the sample bottle. Wear elements within tolerance. Please investigate and eliminate the cause of waterinfiltration. Color : red.

Action

Results:	Method*	Unit	Current sample	12.10.23 O004		
Analysis date			12/10/2023	9/03/2021	18/08/2020	18/11/2019
Date of receipt			12/10/2023	9/03/2021	18/08/2020	18/11/2019
Sample date (k)			18/09/2023	3/02/2021	?	7/11/2019
H/Km Oil (k)			8525 H	2000 H	? H	420 H
H/Km total (k)			28787 H	17714 H	7616 H	14017 H
Top up (k)			60	20	50	?
Oil Condition:						
Viscosity at 40°C	ASTM D7279	cSt	68.2	76.4	67.5	67.7
Viscosity at 100°C	ASTM D7279	cSt				
Viscosity-index	ASTM D2270					
Fuel dilution	ASTM D7593	%				
AN	ASTM D8045	mg KOH/g	0.49	1.53	0.36	0.38
BN	ASTM D2896B	mg KOH/g				
Oxidation	ASTM E2412 (A)	Abs/0.1mm	4.9			
Nitration	ASTM E2412	Abs/0.1mm	3.6			
PMCC	ASTM D93	°C				
COC	ASTM D92B	°C				
Color	ASTM D1500					
Additives:						
Ba: Barium	ASTM D5185	ppm	1	< 1	< 1	< 1
Ca: Calcium	ASTM D5185 (A)	ppm	97	1070	< 5	< 5
Mg: Magnesium	ASTM D5185 (A)	ppm	20	243	< 5	< 5
P: Phosphorus	ASTM D5185 (A)	ppm	509	865	523	499
S: Sulfur	ASTM D5185	%	0.07	0.24	0.08	0.08
Zn: Zink	ASTM D5185 (A)	ppm	73	789	25	< 5
Pollution:						
Si: Silicium	ASTM D5185 (A)	ppm	< 10	< 10	< 10	< 10
B: Boron	ASTM D5185	ppm	3	84	< 1	< 1
Na: Sodium	ASTM D5185 (A)	ppm	< 5	< 5	< 5	< 5
Water	WI-0002	%	0.24	0.05	< 0.04	13.60
Water (KF)	ASTM D6304C	ppm				
Soot content	ASTM E2412 (A)	%				
Antifreeze	ASTM D2982A					
PC ISO grade	ASTM D7647 (A)					
PC Cleanliness class	ASTM D7647 (A)					
Insolubles	ASTM D4898	mg/l				
Wear metals:						
Al: Aluminium	ASTM D5185 (A)	ppm	< 5	7	19	< 5
Cr: Chromium	ASTM D5185 (A)	ppm	< 5	< 5	< 5	< 5
Cu: Copper	ASTM D5185 (A)	ppm	< 5	< 5	< 5	< 5
Fe: Iron	ASTM D5185 (A)	ppm	< 5	8	16	9
Mo: Molybdenum	ASTM D5185 (A)	ppm	< 5	39	< 5	< 5
Pb: Lead	ASTM D5185 (A)	ppm	< 5	< 5	< 5	< 5
Sn: Tin	ASTM D5185	ppm	< 1	< 1	1	1
PQ index	WI-0021					

These conclusions are based on the supplied samples and information where the representativeness and validity cannot be guaranteed. Opinions and interpretation are outside the scope of accreditation. The measurement uncertainty is available on request. Samples are destroyed 2 months after receipt. The report may only be reproduced complete. Distribution on the responsibility of the client. *Methods are modified according to specified method. (A)Accreditation. (U)Outsourced. (k) Received info from customer.

Batch: 2328603 - p.1 / 3

Diagnosis: ANW

Date of issue: 13/10/2023

B118 AC RENTAL EUROPE.

Alpha MS - Bergensesteenweg 713 - 1600 Sint-Pieters-Leeuw - Belgium - Tel.: 00 32 2 365 02 29 - Fax.: 00 32 2 361 34 58.

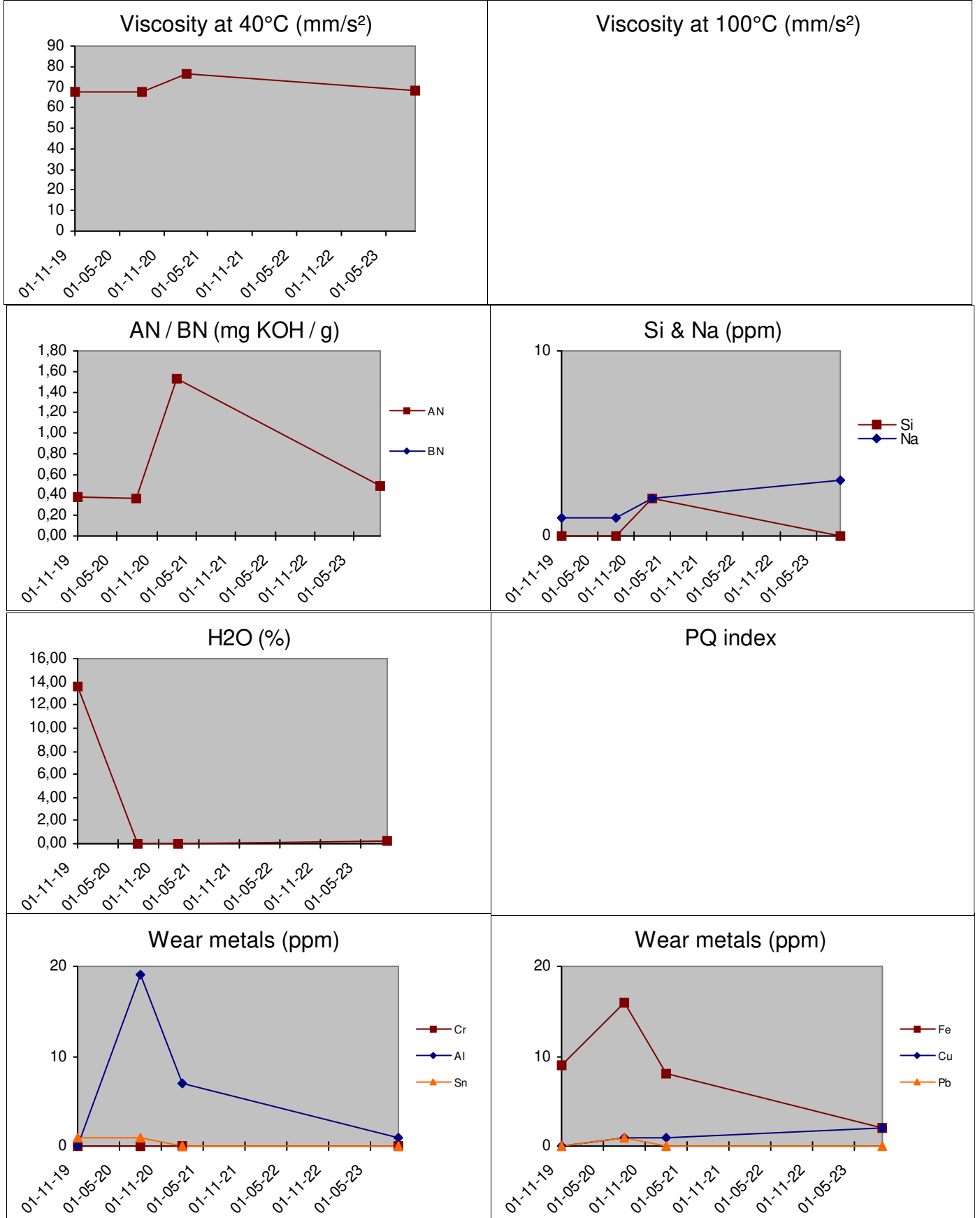


History lubricant:

12.10.23 0004

1	12.10.23 0004	ATLAS COPCO ROTO Z ISO 68
2	09.03.21 0007	ATLAS COPCO ROTO Z
3	18.08.20 0010	ATLAS COPCO ROTO Z
4	18.11.19 0003	ATLAS COPCO ROTO Z
5		
6		

History 12.10.23 O004



These conclusions are based on the supplied samples and information where the representativeness and validity cannot be guaranteed. Opinions and interpretation are outside the scope of accreditation. The measurement uncertainty is available on request. Samples are destroyed 2 months after receipt. The report may only be reproduced complete. Distribution on the responsibility of the client. *Methods are modified according to specified method. (A) Accreditation, (U) Outsourced, (k) Received info from customer.