



Analysis Report

BELL 1511 (B93A645EV03007576)

System: AUT. TRANSMISSION
 Sump Capacity: ?
 Lubricant: BELL ALLISON TES 295
 Labocodenbr: 117434-AMa5
 Samplenummer: 29.09.23 L008
 Labelnummer: 510000800105
 Date sample drawn: 15.09.2023
 Sampling: by client

Customer: LTD BELL EQUIPMENT UK
 MARK GUILFOYLE
 Address: UNIT 6C GRAYCAR BUSINESS PARK
 DE138EN BURTON ON
 Your customer:
 Your ref.:



Oil



Pollution



Wear



Diagnostic

Attention: high ISO class. Aluminium and lead content above the normal value. The other characteristics are considered as normal.

Action

Results:	Method*	Unit	Current sample	29.09.23 L008
----------	---------	------	----------------	---------------

Analysis date			29/09/2023	
Date of receipt			29/09/2023	
Sample date			15/09/2023	
H/Km Oil			2000 H	
H/Km total			4019 H	
Top up			?	

Oil Condition:

Viscosity at 40°C	ASTM D7279	cSt	34.8	
Viscosity at 100°C	ASTM D7279	cSt	7.2	
Viscosity-index	ASTM D2270		177	
Fuel dilution	ASTM D7593	%		
AN	ASTM D8045	mg KOH/g	2.87	
BN	ASTM D2896B	mg KOH/g		
Oxidation	ASTM E2412	Abs/0.1mm	102.0	
Nitration	ASTM E2412	Abs/0.1mm	4.6	
PMCC	ASTM D93	°C		
COC	ASTM D92B	°C		
Color	ASTM D1500		6.0	

Additives:

Ba: Barium	ASTM D5185	ppm	1	
Ca: Calcium	ASTM D5185	ppm	169	
Mg: Magnesium	ASTM D5185	ppm	< 1	
P: Phosphorus	ASTM D5185	ppm	492	
S: Sulfur	ASTM D5185	%	0.27	
Zn: Zink	ASTM D5185	ppm	5	

Pollution:

Si: Silicium	ASTM D5185	ppm	7	
B: Boron	ASTM D5185	ppm	360	
Na: Sodium	ASTM D5185	ppm	8	
Water	WI-0002	%		
Water (KF)	ASTM D6304C	ppm	919	
Soot content	ASTM E2412	%		
Antifreeze	ASTM D2982A			
PC ISO grade	ASTM D7647		24/20/13	
PC Cleanliness class	ASTM D7647		> 12 A	
Insolubles	ASTM D4898	mg/l		

Wear metals:

Al: Aluminium	ASTM D5185	ppm	21	
Cr: Chromium	ASTM D5185	ppm	< 1	
Cu: Copper	ASTM D5185	ppm	9	
Fe: Iron	ASTM D5185	ppm	50	
Mo: Molybdenum	ASTM D5185	ppm	< 1	
Pb: Lead	ASTM D5185	ppm	21	
Sn: Tin	ASTM D5185	ppm	5	
PQ index	WI-0021			

These conclusions are based on the supplied samples and information where the representativeness and validity cannot be guaranteed. Opinions and interpretation are outside the scope of accreditation. The measurement uncertainty is available on request. Samples are destroyed 2 months after receipt. The report may only be reproduced complete. Distribution on the responsibility of the client. *Methods are modified according to specified method. (A)Accreditation. (U)Outsourced.

Batch: 2327702 - p.1 / 2

Diagnosis: ANW

Date of issue: 04/10/2023

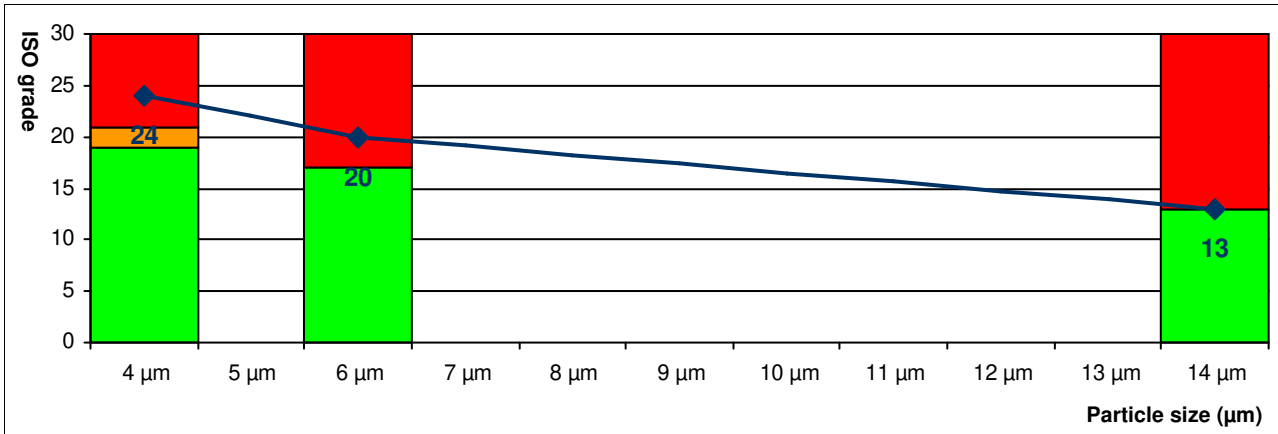
BE02 BELL EQUIPMENT UK.

Alpha MS - Bergensesteenweg 713 - 1600 Sint-Pieters-Leeuw - Belgium - Tel.: 00 32 2 365 02 29 - Fax.: 00 32 2 361 34 58.

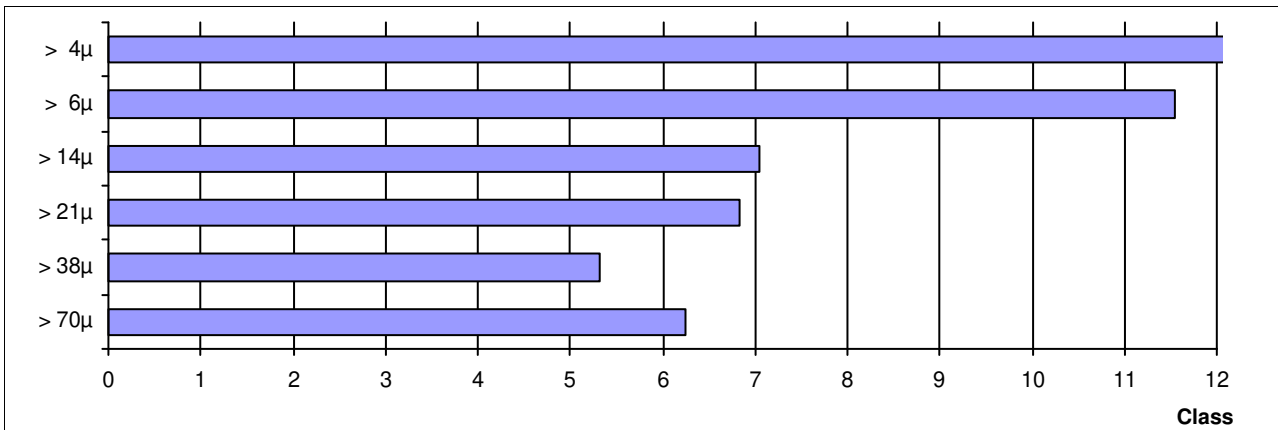


ISO score	24 / 20 / 13
AS4059 class	> 12 A

ISO score (4406:2021)	Particles / 100ml	Score
> 4μ	10064690	24
> 6μ	958400	20
> 14μ	7280	13
> 21μ	1120	
> 38μ	70	
> 70μ	20	



AS4059 class	Particles / 100ml	Class
A: > 4μ	10064690	>A12
B: > 6μ	958400	B12
C: > 14μ	7280	C8
D: > 21μ	1120	D7
E: > 38μ	70	E6
F: > 70μ	20	F7



These conclusions are based on the supplied samples and information where the representativeness and validity cannot be guaranteed. Opinions and interpretation are outside the scope of accreditation. The measurement uncertainty is available on request. Samples are destroyed 2 months after receipt. The report may only be reproduced complete. Distribution on the responsibility of the client. *Methods are modified according to specified method. (A) Accreditation. (U) Outsourced.