

System: HYDRAULIC SYSTEM
 Sump Capacity (k): ?
 Lubricant (k): UNIL HYDRO NT ISO 46
 Labocodenbr: 114652-TM.4
 Samplenummer: 13.10.23 L004
 Labelnummer: 203001100330
 Date sample drawn (k): 1.09.2023
 Sampling: by client

Customer (k): ISO 17025 AMS
 Address (k): Bergensesteenweg 713
 B- 1600 Sint-Pieters-Leeuw
 Your customer (k): BLIND STAAL 2
 Your ref. (k):



Oil



Pollution



Wear



Diagnostic

The oil is in good condition and the wear metals are considered normal. The particle pollution level is normal, indicating an appropriate filtration.

Normal

| Results: | Method* | Unit | Current sample | 13.10.23 L004 | | | | |
|-----------------|---------|------|----------------|---------------|------------|------------|------------|------------|
| Analysis date | | | 13/10/2023 | 19/10/2023 | 10/10/2023 | 29/09/2023 | 22/09/2023 | 19/09/2023 |
| Date of receipt | | | 13/10/2023 | 19/10/2023 | 10/10/2023 | 29/09/2023 | 22/09/2023 | 19/09/2023 |
| Sample date (k) | | | 1/09/2023 | 1/09/2023 | ? | ? | ? | 1/09/2023 |
| H/Km Oil (k) | | | ? | ? | ? | ? | ? | ? |
| H/Km total (k) | | | ? | ? | ? | ? | ? | ? |
| Top up (k) | | | ? | ? | ? | ? | ? | ? |

Oil Condition:

| | | | | | | | | |
|--------------------|----------------|-----------|------|------|------|------|------|------|
| Viscosity at 40°C | ASTM D7279 | cSt | 45.8 | 46.2 | 46.0 | 45.9 | 45.8 | 45.8 |
| Viscosity at 100°C | ASTM D7279 | cSt | 7.1 | 7.1 | 7.1 | 7.1 | 7.0 | 7.0 |
| Viscosity-index | ASTM D2270 | | | | | | | |
| Fuel dilution | ASTM D7593 | % | | | | | | |
| AN | ASTM D8045 | mg KOH/g | 0.28 | 0.3 | 0.28 | 0.27 | 0.29 | 0.29 |
| BN | ASTM D2896B | mg KOH/g | | | | | | |
| Oxidation | ASTM E2412 (A) | Abs/0.1mm | 3.2 | 3.2 | 3.2 | 3.1 | 3.1 | 3.1 |
| Nitration | ASTM E2412 | Abs/0.1mm | 3.1 | 3.0 | 3.1 | 3.0 | 3.0 | 3.0 |
| PMCC | ASTM D93 | °C | | | | | | |
| COC | ASTM D92B | °C | | | | | | |
| Color | ASTM D1500 | | 1.5 | 2.0 | 2.0 | 2.0 | 1.5 | 1.5 |

Additives:

| | | | | | | | | |
|---------------|----------------|-----|------|------|------|------|------|------|
| Ba: Barium | ASTM D5185 | ppm | 1 | 2 | < 1 | 1 | 1 | 2 |
| Ca: Calcium | ASTM D5185 (A) | ppm | 7 | 7 | 7 | 5 | 6 | 6 |
| Mg: Magnesium | ASTM D5185 (A) | ppm | < 5 | < 5 | < 5 | < 5 | < 5 | < 5 |
| P: Phosphorus | ASTM D5185 (A) | ppm | 160 | 169 | 174 | 153 | 157 | 159 |
| S: Sulfur | ASTM D5185 | % | 0.80 | 0.87 | 0.89 | 0.77 | 0.79 | 0.84 |
| Zn: Zink | ASTM D5185 (A) | ppm | 7 | 6 | 7 | 5 | 7 | 6 |

Pollution:

| | | | | | | | | |
|----------------------|----------------|------|----------|----------|----------|----------|----------|----------|
| Si: Silicium | ASTM D5185 (A) | ppm | < 10 | < 10 | < 10 | < 10 | < 10 | < 10 |
| B: Boron | ASTM D5185 | ppm | < 1 | 7 | < 1 | 1 | 1 | 1 |
| Na: Sodium | ASTM D5185 (A) | ppm | < 5 | < 5 | < 5 | < 5 | < 5 | < 5 |
| Water | WI-0002 | % | | | | | | |
| Water (KF) | ASTM D6304C | ppm | 55 | 36 | 73 | 97 | 51 | 27 |
| Soot content | ASTM E2412 (A) | % | | | | | | |
| Antifreeze | ASTM D2982A | | | | | | | |
| PC ISO grade | ASTM D7647 (A) | | 19/16/12 | 18/16/11 | 18/16/11 | 19/16/12 | 19/16/12 | 19/16/12 |
| PC Cleanliness class | ASTM D7647 (A) | | 9 A | 9 A | 9 A | 9 A | 9 A | 9 A |
| Insolubles | ASTM D4898 | mg/l | | | | | | |

Wear metals:

| | | | | | | | | |
|----------------|----------------|-----|-----|-----|-----|-----|-----|-----|
| Al: Aluminium | ASTM D5185 (A) | ppm | < 5 | < 5 | < 5 | < 5 | < 5 | < 5 |
| Cr: Chromium | ASTM D5185 (A) | ppm | < 5 | < 5 | < 5 | < 5 | < 5 | < 5 |
| Cu: Copper | ASTM D5185 (A) | ppm | < 5 | < 5 | < 5 | < 5 | < 5 | < 5 |
| Fe: Iron | ASTM D5185 (A) | ppm | < 5 | < 5 | < 5 | < 5 | < 5 | < 5 |
| Mo: Molybdenum | ASTM D5185 (A) | ppm | < 5 | < 5 | < 5 | < 5 | < 5 | < 5 |
| Pb: Lead | ASTM D5185 (A) | ppm | < 5 | < 5 | < 5 | < 5 | < 5 | < 5 |
| Sn: Tin | ASTM D5185 | ppm | 2 | 1 | 1 | < 1 | < 1 | 1 |
| PQ index | WI-0021 | | | | | | | |

These conclusions are based on the supplied samples and information where the representativeness and validity cannot be guaranteed. Opinions and interpretation are outside the scope of accreditation. The measurement uncertainty is available on request. Samples are destroyed 2 months after receipt. The report may only be reproduced complete. Distribution on the responsibility of the client. *Methods are modified according to specified method. (A) Accreditation. (U) Outsourced. (k) Received info from customer.

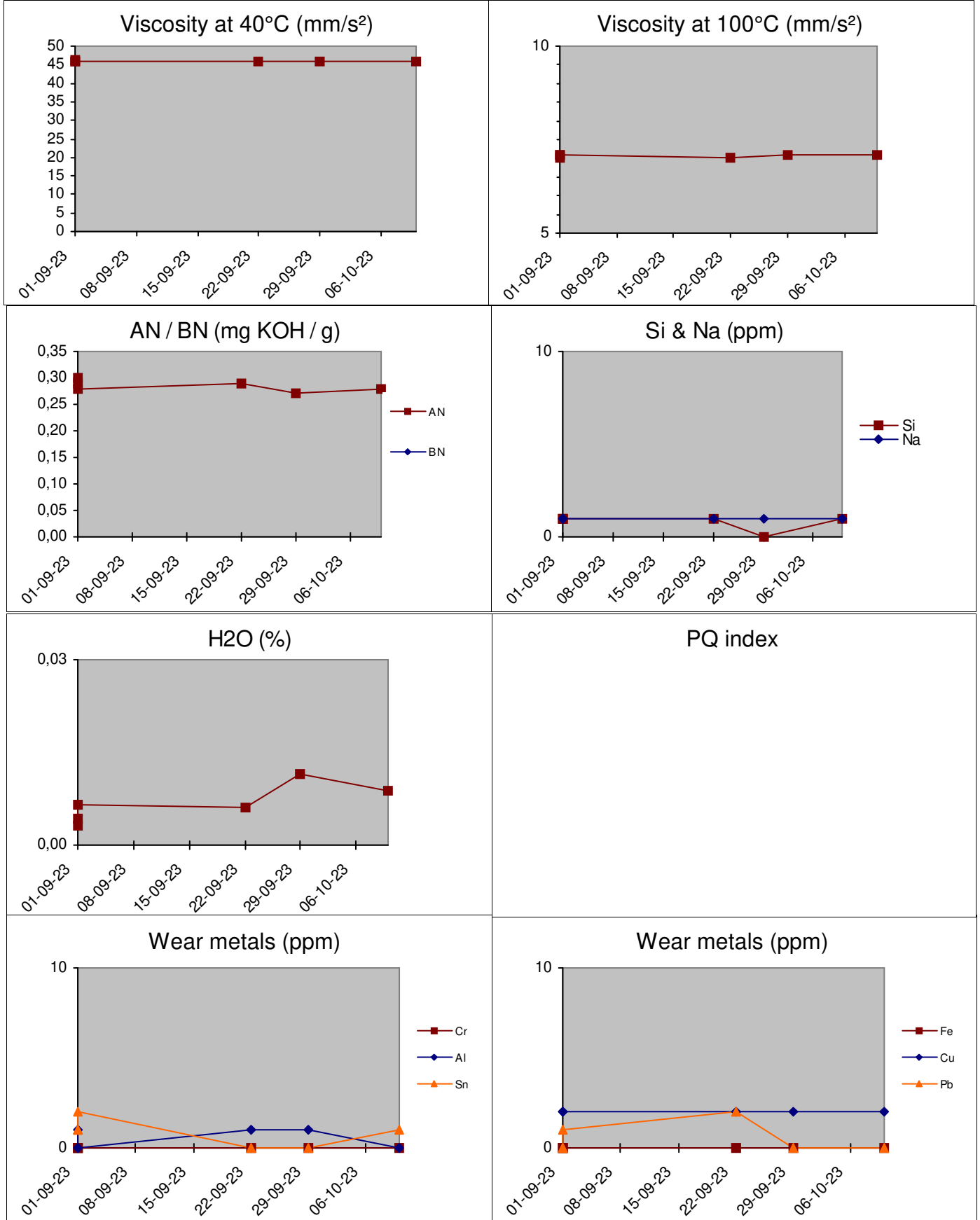
Batch: 2329303 - p.1 / 3

Diagnosis: ANW

Date of issue: 20/10/2023

B-20 ALPHA MAINTENANCE SYST..

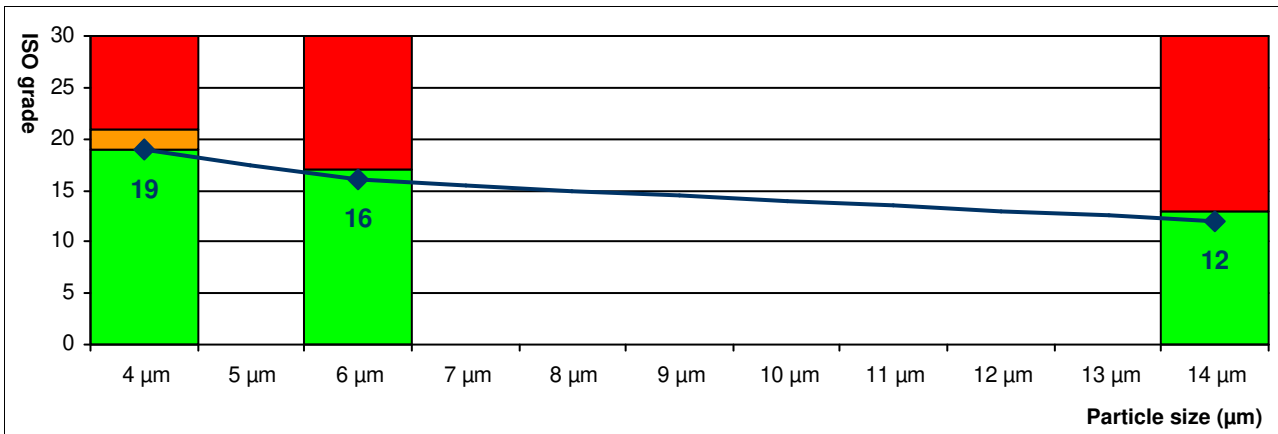
History 13.10.23 L004



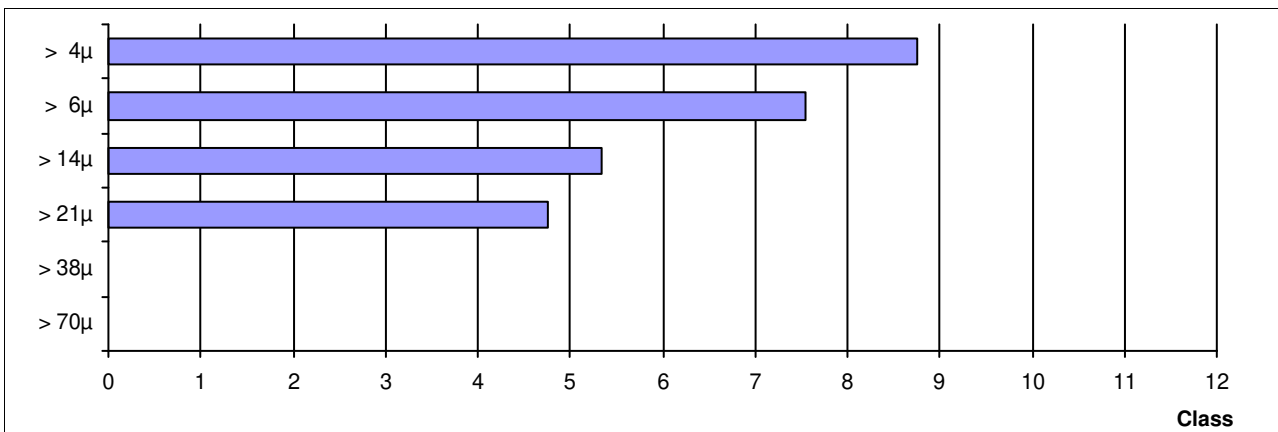
These conclusions are based on the supplied samples and information where the representativeness and validity cannot be guaranteed. Opinions and interpretation are outside the scope of accreditation. The measurement uncertainty is available on request. Samples are destroyed 2 months after receipt. The report may only be reproduced complete. Distribution on the responsibility of the client. *Methods are modified according to specified method. (A) Accreditation, (U) Outsourced, (k) Received info from customer.

| | |
|-------------------------|---------------------|
| ISO score (A) | 19 / 16 / 12 |
| AS4059 class (A) | 9 A |

| ISO score (A) (4406:2021) | Particles / 100ml | Score |
|---------------------------|-------------------|-------|
| > 4µ (A) | 352960 | 19 |
| > 6µ (A) | 59840 | 16 |
| > 14µ (A) | 2320 | 12 |
| > 21µ (A) | 270 | |
| > 38µ (A) | 0 | |
| > 70µ (A) | 0 | |



| AS4059 class (A) | Particles / 100ml | Class |
|------------------|-------------------|-------|
| A: > 4µ (A) | 352960 | A9 |
| B: > 6µ (A) | 59840 | B8 |
| C: > 14µ (A) | 2320 | C6 |
| D: > 21µ (A) | 270 | D5 |
| E: > 38µ (A) | 0 | E000 |
| F: > 70µ (A) | 0 | F000 |



These conclusions are based on the supplied samples and information where the representativeness and validity cannot be guaranteed. Opinions and interpretation are outside the scope of accreditation. The measurement uncertainty is available on request. Samples are destroyed 2 months after receipt. The report may only be reproduced complete. Distribution on the responsibility of the client. *Methods are modified according to specified method. (A)Accreditation. (U)Outsourced. (k) Received info from customer.