

System: HYDRAULISCH SYSTEEM
 Sump Capacity (k): ?
 Lubricant (k): UNIL HYDRO S ISO 46
 Labocodenbr: 114652-PP.4
 Samplenummer: 26.10.23 L006
 Labelnummer: 201001100797
 Date sample drawn (k): 23.03.2022
 Sampling: by client

Customer (k): ISO 17025 AMS
 Address (k): Bergensesteenweg 713
 B- 1600 Sint-Pieters-Leeuw
 Your customer (k): HYDRO S46 IC
 Your ref. (k):



Oil



Pollution



Wear



Diagnostic

The oil is in good condition and the wear metals are considered normal. The particle pollution level is normal, indicating an appropriate filtration.

Normal

Results:	Method*	Unit	Current sample						26.10.23 L006
Analysis date			26/10/2023	13/10/2023	19/10/2023	10/10/2023	29/09/2023	22/09/2023	
Date of receipt			26/10/2023	13/10/2023	19/10/2023	10/10/2023	29/09/2023	22/09/2023	
Sample date (k)			23/03/2022	23/03/2022	23/03/2022	23/03/2022	23/03/2022	23/03/2022	
H/Km Oil (k)			?	?	?	?	?	?	
H/Km total (k)			?	?	?	?	?	?	
Top up (k)			?	?	?	?	?	?	

Oil Condition:

Viscosity at 40°C	ASTM D7279	cSt	46.1	46.3	45.6	47.0	46.0	46.2
Viscosity at 100°C	ASTM D7279	cSt	7.1	7.2	7.0	7.1	7.1	7.2
Viscosity-index	ASTM D2270		113	116	111	110	113	116
Fuel dilution	ASTM D7593	%						
AN	ASTM D8045	mg KOH/g	0.16	0.15	0.16	0.14	0.15	0.16
BN	ASTM D2896B	mg KOH/g						
Oxidation	ASTM E2412 (A)	Abs/0.1mm	2.3	2.4	2.3	2.3	2.3	2.3
Nitration	ASTM E2412	Abs/0.1mm	2.7	2.7	2.7	2.7	2.7	2.6
PMCC	ASTM D93	°C						
COC	ASTM D92B	°C						
Color	ASTM D1500		1.0	1.5	1.5	1.5	1.5	1.5

Additives:

Ba: Barium	ASTM D5185	ppm	1	1	2	< 1	1	1
Ca: Calcium	ASTM D5185 (A)	ppm	41	43	45	46	43	41
Mg: Magnesium	ASTM D5185 (A)	ppm	< 5	< 5	< 5	< 5	< 5	< 5
P: Phosphorus	ASTM D5185 (A)	ppm	72	70	71	77	68	72
S: Sulfur	ASTM D5185	%	0.52	0.55	0.57	0.64	0.55	0.55
Zn: Zink	ASTM D5185 (A)	ppm	16	17	18	18	17	17

Pollution:

Si: Silicium	ASTM D5185 (A)	ppm	< 10	< 10	< 10	< 10	< 10	< 10
B: Boron	ASTM D5185	ppm	2	< 1	7	< 1	2	2
Na: Sodium	ASTM D5185 (A)	ppm	< 5	< 5	< 5	< 5	< 5	< 5
Water	WI-0002	%						
Water (KF)	ASTM D6304C	ppm	33	38	28	60	3	46
Soot content	ASTM E2412 (A)	%						
Antifreeze	ASTM D2982A							
PC ISO grade	ASTM D7647 (A)		19/16/12	19/17/11	19/16/11	20/17/11	19/16/11	19/16/11
PC Cleanliness class	ASTM D7647 (A)		9 A	10 A	9 A	10 A	9 A	9 A
Insolubles	ASTM D4898	mg/l						

Wear metals:

Al: Aluminium	ASTM D5185 (A)	ppm	< 5	< 5	< 5	< 5	< 5	< 5
Cr: Chromium	ASTM D5185 (A)	ppm	< 5	< 5	< 5	< 5	< 5	< 5
Cu: Copper	ASTM D5185 (A)	ppm	< 5	< 5	< 5	< 5	< 5	< 5
Fe: Iron	ASTM D5185 (A)	ppm	< 5	< 5	< 5	< 5	< 5	< 5
Mo: Molybdenum	ASTM D5185 (A)	ppm	< 5	< 5	< 5	< 5	< 5	< 5
Pb: Lead	ASTM D5185 (A)	ppm	< 5	< 5	< 5	< 5	< 5	< 5
Sn: Tin	ASTM D5185	ppm	< 1	1	1	< 1	1	< 1
PQ index	WI-0021							

These conclusions are based on the supplied samples and information where the representativeness and validity cannot be guaranteed. Opinions and interpretation are outside the scope of accreditation. The measurement uncertainty is available on request. Samples are destroyed 2 months after receipt. The report may only be reproduced complete. Distribution on the responsibility of the client. *Methods are modified according to specified method. (A) Accreditation. (U) Outsourced. (k) Received info from customer.

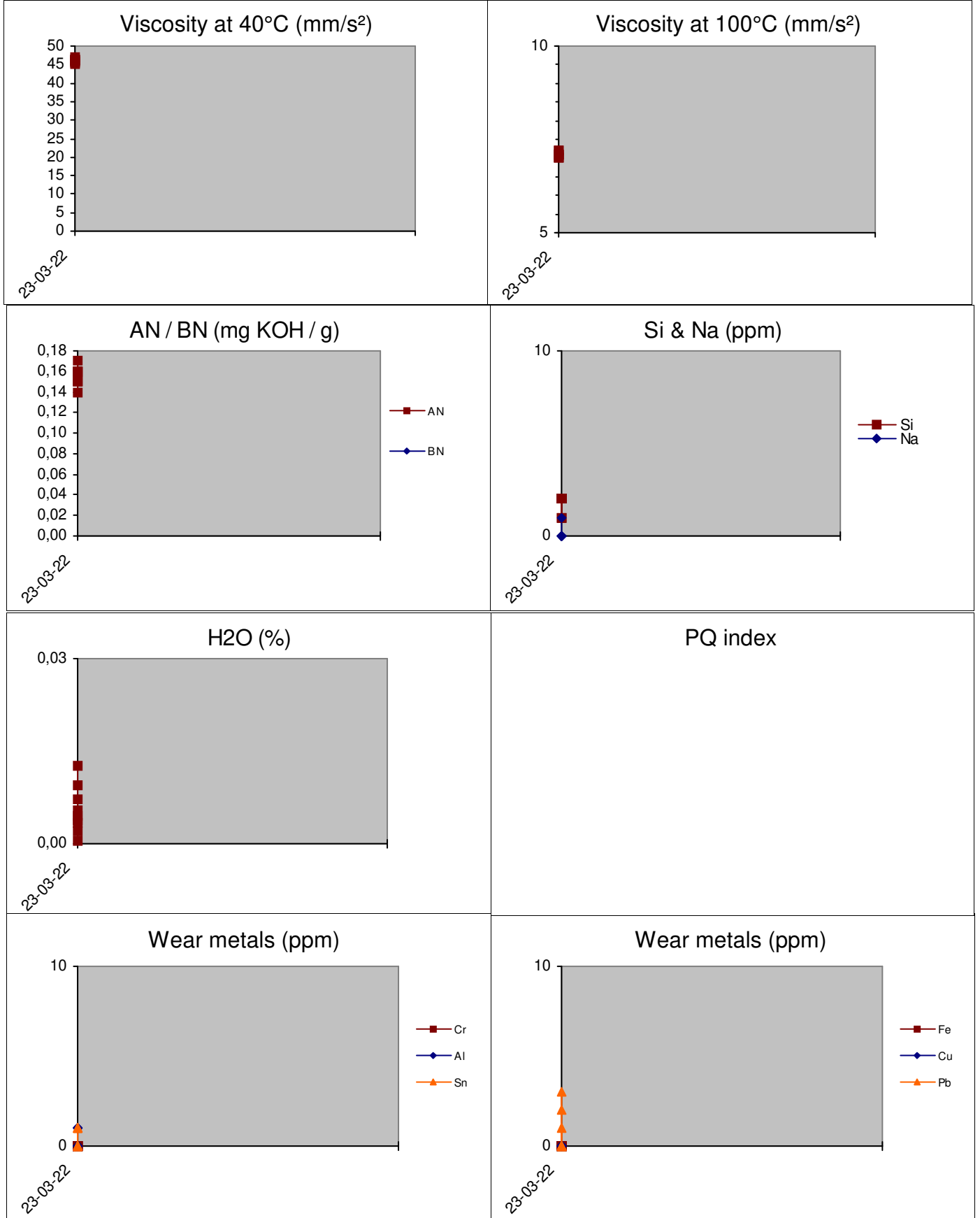
Batch: 2330301 - p.1 / 3

Diagnosis: ANW

Date of issue: 29/10/2023

B-20 ALPHA MAINTENANCE SYST..

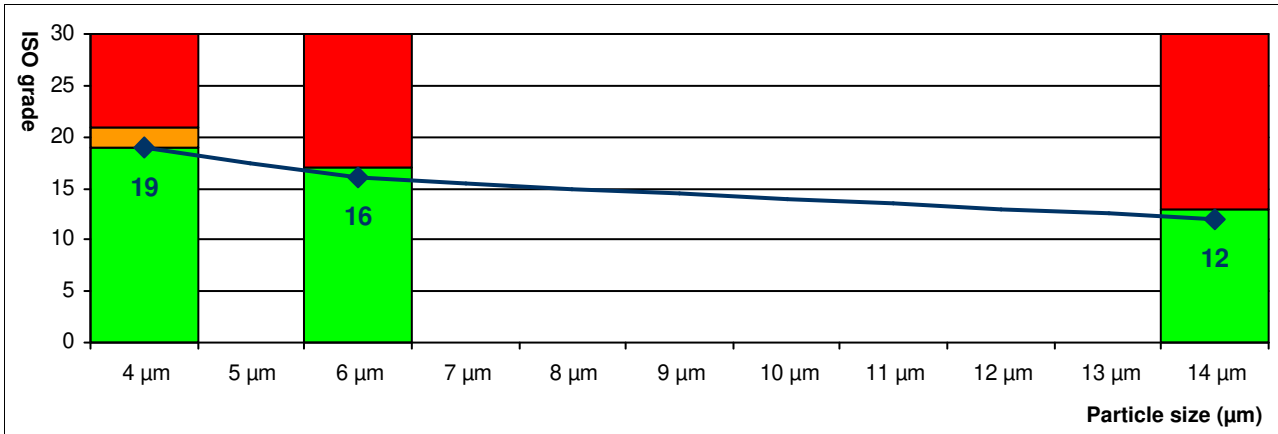
History 26.10.23 L006



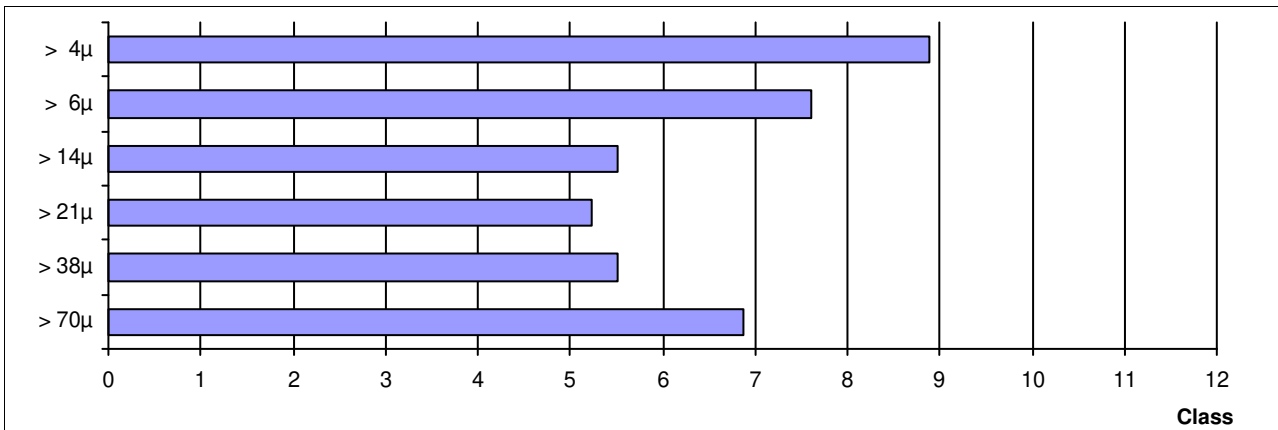
These conclusions are based on the supplied samples and information where the representativeness and validity cannot be guaranteed. Opinions and interpretation are outside the scope of accreditation. The measurement uncertainty is available on request. Samples are destroyed 2 months after receipt. The report may only be reproduced complete. Distribution on the responsibility of the client. *Methods are modified according to specified method. (A) Accreditation. (U) Outsourced. (k) Received info from customer.

ISO score (A)	19 / 16 / 12
AS4059 class (A)	9 A

ISO score (A) (4406:2021)	Particles / 100ml	Score
> 4µ (A)	376860	19
> 6µ (A)	62840	16
> 14µ (A)	2630	12
> 21µ (A)	380	
> 38µ (A)	80	
> 70µ (A)	30	



AS4059 class (A)	Particles / 100ml	Class
A: > 4µ (A)	376860	A9
B: > 6µ (A)	62840	B8
C: > 14µ (A)	2630	C6
D: > 21µ (A)	380	D6
E: > 38µ (A)	80	E6
F: > 70µ (A)	30	F7



These conclusions are based on the supplied samples and information where the representativeness and validity cannot be guaranteed. Opinions and interpretation are outside the scope of accreditation. The measurement uncertainty is available on request. Samples are destroyed 2 months after receipt. The report may only be reproduced complete. Distribution on the responsibility of the client. *Methods are modified according to specified method. (A) Accreditation. (U) Outsourced. (k) Received info from customer.