

System: AIR COMPRESSOR
Sump Capacity (k): 55 L
Lubricant (k): ATLAS COPCO ROTO Z ISO 68
Labocodenbr: 109830-VT.9
Samplenummer: 27.11.23 Q018
Labelnummer: 429000800715
Date sample drawn (k): 25.10.2023
Sampling: by client

Customer (k): ATLAS COPCO RENTAL EUROP
Luc Despeghele
Address (k): INDUSTRIEWEG 1F
B- 2850 BOOM
Your customer (k): 391695/14181
Your ref. (k): D+/391695/14181/PTS1600



Oil



Pollution



Wear



Diagnostic

We notice an increased zinc and calcium content. Wear elements within tolerance. The other characteristics are considered as normal.

Attention

Results:	Method*	Unit	Current sample						27.11.23 Q018
Analysis date			27/11/2023	3/01/2023	16/03/2022	20/05/2021	26/01/2021	5/11/2019	
Date of receipt			27/11/2023	3/01/2023	16/03/2022	20/05/2021	26/01/2021	5/11/2019	
Sample date (k)			25/10/2023	16/11/2022	16/02/2022	12/05/2021	?	?	
H/Km Oil (k)			49 H	? H	8057 H	1500 H	200 H	550 H	
H/Km total (k)			8287 H	8238 H	8057 H	7264 H	6127 H	5653 H	
Top up (k)			?	55	55	?	60	?	

Oil Condition:

Viscosity at 40°C	ASTM D7279	cSt	67.2	68.2	81.4	83.7	86.2	77.6
Viscosity at 100°C	ASTM D7279	cSt	9.7	9.7	11.3	11.6	12.1	11.1
Viscosity-index	ASTM D2270		127	124	130	131	136	134
Fuel dilution	ASTM D7593	%						
AN	ASTM D8045	mg KOH/g	0.39	0.45	2.41	1.70	1.76	2.02
BN	ASTM D2896B	mg KOH/g						
Oxidation	ASTM E2412 (A)	Abs/0.1mm	4.0	4.9	13.6			
Nitration	ASTM E2412	Abs/0.1mm	3.1	3.5	4.1			
PMCC	ASTM D93	°C						
COC	ASTM D92B	°C						
Color	ASTM D1500							

Additives:

Ba: Barium	ASTM D5185	ppm	< 1	< 1	< 1	< 1	< 1	< 1
Ca: Calcium	ASTM D5185 (A)	ppm	97	242	1690	1680	2040	1630
Mg: Magnesium	ASTM D5185 (A)	ppm	17	58	352	397	468	377
P: Phosphorus	ASTM D5185 (A)	ppm	698	549	1034	1093	1339	1078
S: Sulfur	ASTM D5185	%	0.06	0.09	0.29	0.33	0.40	0.31
Zn: Zink	ASTM D5185 (A)	ppm	65	195	1132	1157	1445	1211

Pollution:

Si: Silicium	ASTM D5185 (A)	ppm	< 10	< 10	< 10	< 10	< 10	< 10
B: Boron	ASTM D5185	ppm	6	17	126	135	155	140
Na: Sodium	ASTM D5185 (A)	ppm	< 5	< 5	< 5	< 5	< 5	< 5
Water	WI-0002	%	< 0.04	< 0.04	0.07	< 0.04	< 0.04	< 0.04
Water (KF)	ASTM D6304C	ppm						
Soot content	ASTM E2412 (A)	%						
Antifreeze	ASTM D2982A							
PC ISO grade	ASTM D7647 (A)							
PC Cleanliness class	ASTM D7647 (A)							
Insolubles	ASTM D4898	mg/l						

Wear metals:

Al: Aluminium	ASTM D5185 (A)	ppm	< 5	< 5	< 5	< 5	< 5	< 5
Cr: Chromium	ASTM D5185 (A)	ppm	< 5	< 5	< 5	< 5	< 5	< 5
Cu: Copper	ASTM D5185 (A)	ppm	< 5	< 5	< 5	< 5	< 5	< 5
Fe: Iron	ASTM D5185 (A)	ppm	< 5	< 5	< 5	< 5	< 5	< 5
Mo: Molybdenum	ASTM D5185 (A)	ppm	< 5	11	62	60	73	62
Pb: Lead	ASTM D5185 (A)	ppm	< 5	< 5	< 5	< 5	< 5	< 5
Sn: Tin	ASTM D5185	ppm	< 1	< 1	3	< 1	< 1	1
PQ index	WI-0021							

These conclusions are based on the supplied samples and information where the representativeness and validity cannot be guaranteed. Opinions and interpretation are outside the scope of accreditation. The measurement uncertainty is available on request. Samples are destroyed 2 months after receipt. The report may only be reproduced complete. Distribution on the responsibility of the client. *Methods are modified according to specified method. (A) Accreditation. (U) Outsourced. (k) Received info from customer.

Batch: 2333301 - p.1 / 3

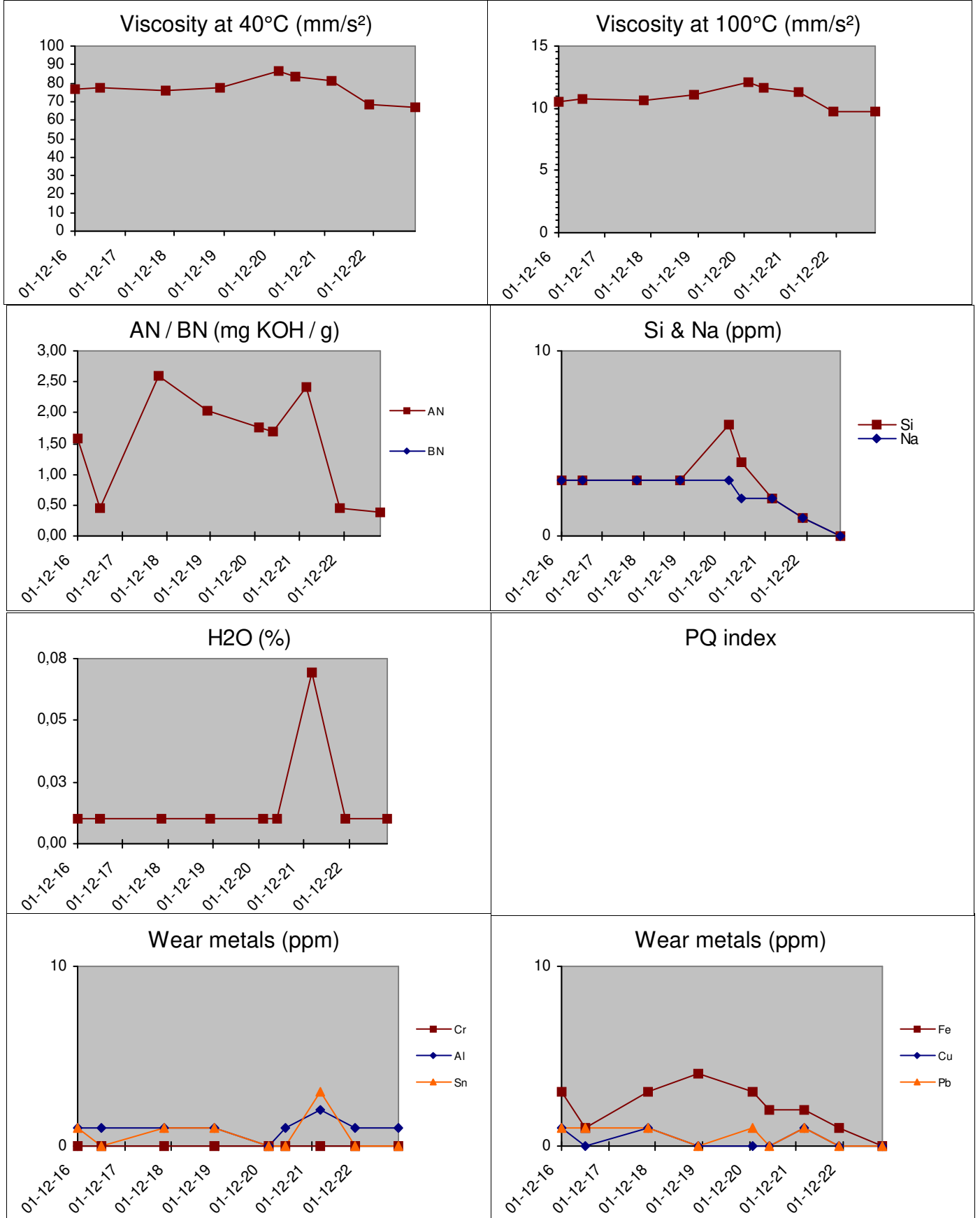
Diagnosis: ANW

Date of issue: 29/11/2023

B118 AC RENTAL EUROPE.

History lubricant:			27.11.23 Q018
1	27.11.23 Q018	ATLAS COPCO ROTO Z ISO 68	
2	03.01.23 O006	ATLAS COPCO ROTO Z	
3	16.03.22 O011	ATLAS PAROIL E MISS.GREEN SAE 15W40	
4	20.05.21 O006	ATLAS PAROIL E MISS.GREEN SAE 15W40	
5	26.01.21 O006	ATLAS PAROIL E MISS.GREEN SAE 15W40	
6	05.11.19 O003	ATLAS PAROIL E MISS.GREEN SAE 15W40	

History 27.11.23 Q018



These conclusions are based on the supplied samples and information where the representativeness and validity cannot be guaranteed. Opinions and interpretation are outside the scope of accreditation. The measurement uncertainty is available on request. Samples are destroyed 2 months after receipt. The report may only be reproduced complete. Distribution on the responsibility of the client. *Methods are modified according to specified method. (A) Accreditation, (U) Outsourced, (k) Received info from customer.