

System: HYDRAULIC SYSTEM
 Sump Capacity (k): 600 L
 Lubricant (k): MOBIL NUTO H ISO 46
 Labocodenbr: 108311-ES.4
 Samplenummer: 27.02.24 L008
 Labelnummer: 110000111701
 Date sample drawn (k): 22.02.2024
 Sampling: by client

Customer (k): LTD INSTRON INTERNATIONAL
 DAVE SCHINDELKA
 Address (k): Hovesesteeweg 6
 B -2530 BOECHOUT
 Your customer (k): SOLVAY BXL
 Your ref. (k):

Diagnostic



Oil



Pollution



Wear



The oil is in good condition and the wear metals are considered normal. The particle pollution level is normal, indicating an appropriate filtration.

Normal

Results:	Method*	Unit	Current sample	27.02.24 L008
Analysis date			27/02/2024	11/12/2020
Date of receipt			27/02/2024	11/12/2020
Sample date (k)			22/02/2024	2/12/2020
H/Km Oil (k)			?	64 H
H/Km total (k)			?	? H
Top up (k)			?	?
Oil Condition:				
Viscosity at 40°C	ASTM D7279	cSt	45.1	43.0
Viscosity at 100°C	ASTM D7279	cSt	7.3	6.7
Viscosity-index	ASTM D2270		125	110
Fuel dilution	ASTM D7593	%		
AN	ASTM D8045	mg KOH/g	0.47	0.52
BN	ASTM D2896B	mg KOH/g		
Oxidation	ASTM E2412 (A)	Abs/0.1mm	3.4	3.1
Nitration	ASTM E2412	Abs/0.1mm	2.0	2.4
PMCC	ASTM D93	°C		
COC	ASTM D92B	°C		
Color	ASTM D1500		1.0	0.5
Additives:				
Ba: Barium	ASTM D5185	ppm	1	< 1
Ca: Calcium	ASTM D5185 (A)	ppm	24	45
Mg: Magnesium	ASTM D5185 (A)	ppm	< 5	< 5
P: Phosphorus	ASTM D5185 (A)	ppm	287	325
S: Sulfur	ASTM D5185	%	0.16	0.27
Zn: Zink	ASTM D5185 (A)	ppm	348	424
Pollution:				
Si: Silicon	ASTM D5185 (A)	ppm	< 10	< 10
B: Boron	ASTM D5185	ppm	1	< 1
Na: Sodium	ASTM D5185 (A)	ppm	< 5	< 5
Water	WI-0002	%		
Water (KF)	ASTM D6304C	ppm	34	132
Soot content	ASTM E2412 (A)	%		
Antifreeze	ASTM D2982A			
PC ISO grade	ASTM D7647 (A)		18/16/12	17/15/12
PC Cleanliness class	ASTM D7647 (A)		8 A	7 A
Insolubles	ASTM D4898	mg/l		
Wear metals:				
Al: Aluminium	ASTM D5185 (A)	ppm	< 5	< 5
Cr: Chromium	ASTM D5185 (A)	ppm	< 5	< 5
Cu: Copper	ASTM D5185 (A)	ppm	< 5	< 5
Fe: Iron	ASTM D5185 (A)	ppm	< 5	< 5
Mo: Molybdenum	ASTM D5185 (A)	ppm	< 5	< 5
Pb: Lead	ASTM D5185 (A)	ppm	< 5	< 5
Sn: Tin	ASTM D5185	ppm	< 1	1
PQ index	WI-0021			

These conclusions are based on the tested supplied samples and information where the representativeness and validity cannot be guaranteed. Opinions and interpretation are outside the scope of accreditation. The measurement uncertainty is available on request. Samples are destroyed 2 months after receipt. The report may only be reproduced complete. Distribution on the responsibility of the client. *Methods are modified according to specified method. (A) Accreditation. (U) Outsourced. (k) Received info from customer.

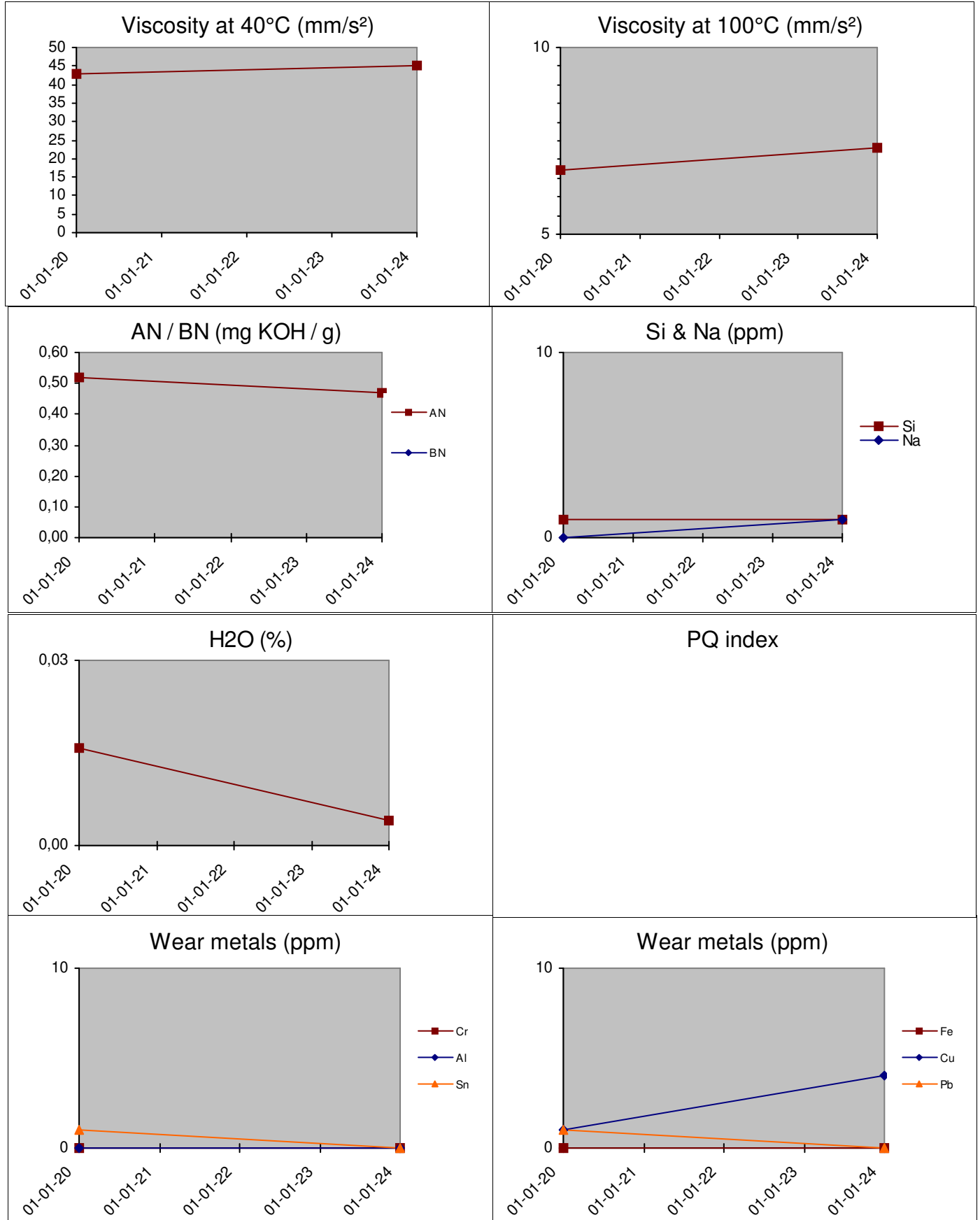
Batch: 2406106 - p.1 / 3

Diagnosis: ANW

Date of issue: 29/02/2024

B033 VALERON STRENGTH FILMS.

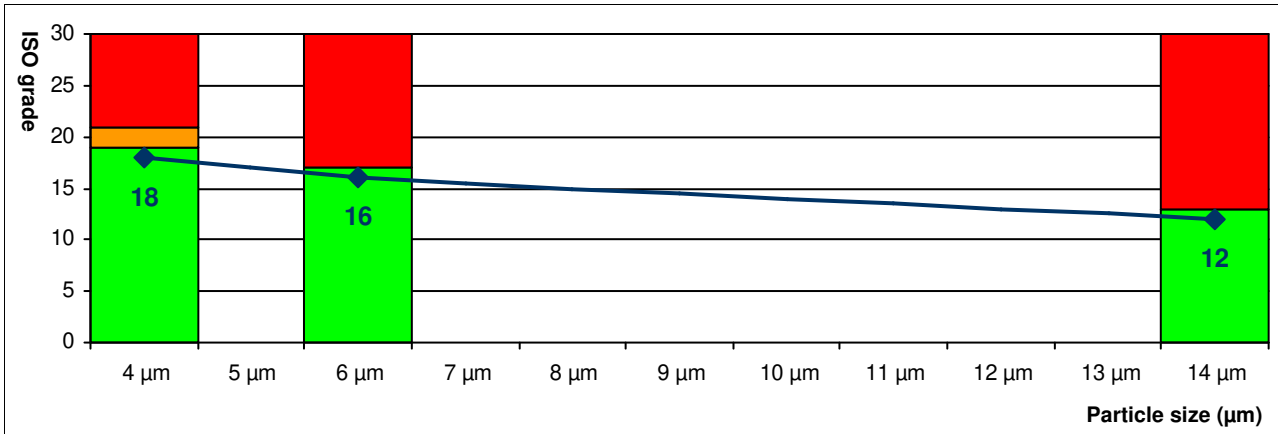
History 27.02.24 L008



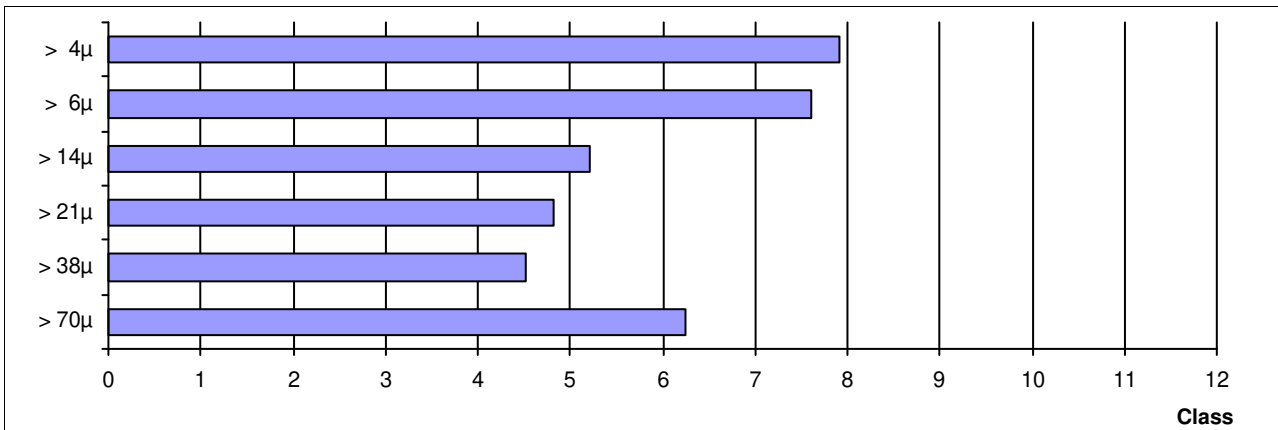
These conclusions are based on the tested supplied samples and information where the representativeness and validity cannot be guaranteed. Opinions and interpretation are outside the scope of accreditation. The measurement uncertainty is available on request. Samples are destroyed 2 months after receipt. The report may only be reproduced complete. Distribution on the responsibility of the client. *Methods are modified according to specified method. (A) Accreditation, (U) Outsourced, (k) Received info from customer.

ISO score (A)	18 / 16 / 12
AS4059 class (A)	8 A

ISO score (A) (4406:2021)	Particles / 100ml	Score
> 4µ (A)	191360	18
> 6µ (A)	63120	16
> 14µ (A)	2110	12
> 21µ (A)	280	
> 38µ (A)	40	
> 70µ (A)	20	



AS4059 class (A)	Particles / 100ml	Class
A: > 4µ (A)	191360	A8
B: > 6µ (A)	63120	B8
C: > 14µ (A)	2110	C6
D: > 21µ (A)	280	D5
E: > 38µ (A)	40	E5
F: > 70µ (A)	20	F7



These conclusions are based on the tested supplied samples and information where the representativeness and validity cannot be guaranteed. Opinions and interpretation are outside the scope of accreditation. The measurement uncertainty is available on request. Samples are destroyed 2 months after receipt. The report may only be reproduced complete. Distribution on the responsibility of the client. *Methods are modified according to specified method. (A) Accreditation. (U) Outsourced. (k) Received info from customer.