

System: HYDRAULISCH SYSTEEM
 Sump Capacity (k): ?
 Lubricant (k): UNIL HYDRO S ISO 46
 Labocodenbr: 114652-PP.4
 Samplenummer: 02.04.24 L004
 Labelnummer: 201001109398
 Date sample drawn (k): 23.03.2022
 Sampling: by client

Customer (k): ISO 17025 AMS
 Address (k): Bergensesteenweg 713
 B- 1600 Sint-Pieters-Leeuw
 Your customer (k): HYDRO S46 IC
 Your ref. (k):

Diagnostic



Oil



Pollution



Wear



The ISO 4406 indicates the presence of very small particles (<6µm). Wear elements within tolerance. The other characteristics are considered as normal.

Attention

Results:	Method*	Unit	Current sample					02.04.24 L004
Analysis date			2/04/2024	21/03/2024	15/03/2024	12/03/2024	5/03/2024	27/02/2024
Date of receipt			2/04/2024	21/03/2024	15/03/2024	12/03/2024	5/03/2024	27/02/2024
Sample date (k)			23/03/2022	23/03/2022	23/03/2022	23/03/2022	23/03/2022	23/03/2022
H/Km Oil (k)			?	?	?	?	?	?
H/Km total (k)			?	?	?	?	?	?
Top up (k)			?	?	?	?	?	?

Oil Condition:

Viscosity at 40°C	ASTM D7279	cSt	45.9	45.6	46.1	46.2	45.6	45.8
Viscosity at 100°C	ASTM D7279	cSt	7.3	7.0	7.3	7.2	7.1	7.2
Viscosity-index	ASTM D2270		121	111	121	116	115	118
Fuel dilution	ASTM D7593	%						
AN	ASTM D8045	mg KOH/g	0.17	0.18	0.18	0.18	0.21	0.17
BN	ASTM D2896B	mg KOH/g						
Oxidation	ASTM E2412 (A)	Abs/0.1mm	2.4	2.3	2.3	2.4	2.3	2.5
Nitration	ASTM E2412	Abs/0.1mm	2.8	2.8	2.8	2.8	2.7	2.7
PMCC	ASTM D93	°C						
COC	ASTM D92B	°C						
Color	ASTM D1500		1.5	1.0	1.5	1.0	1.5	1.0

Additives:

Ba: Barium	ASTM D5185	ppm	< 1	< 1	1	1	1	1
Ca: Calcium	ASTM D5185 (A)	ppm	47	38	45	47	44	43
Mg: Magnesium	ASTM D5185 (A)	ppm	< 5	< 5	< 5	< 5	< 5	< 5
P: Phosphorus	ASTM D5185 (A)	ppm	80	72	78	78	75	73
S: Sulfur	ASTM D5185	%	0.72	0.62	0.54	0.58	0.54	0.57
Zn: Zink	ASTM D5185 (A)	ppm	18	13	18	19	17	18

Pollution:

Si: Silicon	ASTM D5185 (A)	ppm	< 10	< 10	< 10	< 10	< 10	< 10
B: Boron	ASTM D5185	ppm	1	< 1	2	3	1	2
Na: Sodium	ASTM D5185 (A)	ppm	< 5	< 5	< 5	< 5	< 5	< 5
Water	WI-0002	%						
Water (KF)	ASTM D6304C	ppm	28	43	35	26	16	23
Soot content	ASTM E2412 (A)	%						
Antifreeze	ASTM D2982A							
PC ISO grade	ASTM D7647 (A)		20/17/13	19/16/12	20/17/11	20/17/12	18/15/10	19/16/10
PC Cleanliness class	ASTM D7647 (A)		11 A	9 A	10 A	10 A	8 A	9 A
Insolubles	ASTM D4898	mg/l						

Wear metals:

Al: Aluminium	ASTM D5185 (A)	ppm	< 5	< 5	< 5	< 5	< 5	< 5
Cr: Chromium	ASTM D5185 (A)	ppm	< 5	< 5	< 5	< 5	< 5	< 5
Cu: Copper	ASTM D5185 (A)	ppm	< 5	< 5	< 5	< 5	< 5	< 5
Fe: Iron	ASTM D5185 (A)	ppm	< 5	< 5	< 5	< 5	< 5	< 5
Mo: Molybdenum	ASTM D5185 (A)	ppm	< 5	< 5	< 5	< 5	< 5	< 5
Pb: Lead	ASTM D5185 (A)	ppm	< 5	< 5	< 5	< 5	< 5	< 5
Sn: Tin	ASTM D5185	ppm	< 1	< 1	< 1	< 1	1	< 1
PQ index	WI-0021							

These conclusions are based on the tested supplied samples and information where the representativeness and validity cannot be guaranteed. Opinions and interpretation are outside the scope of accreditation. The measurement uncertainty is available on request. Samples are destroyed 2 months after receipt. The report may only be reproduced complete. Distribution on the responsibility of the client. *Methods are modified according to specified method. (A) Accreditation. (U) Outsourced. (k) Received info from customer.

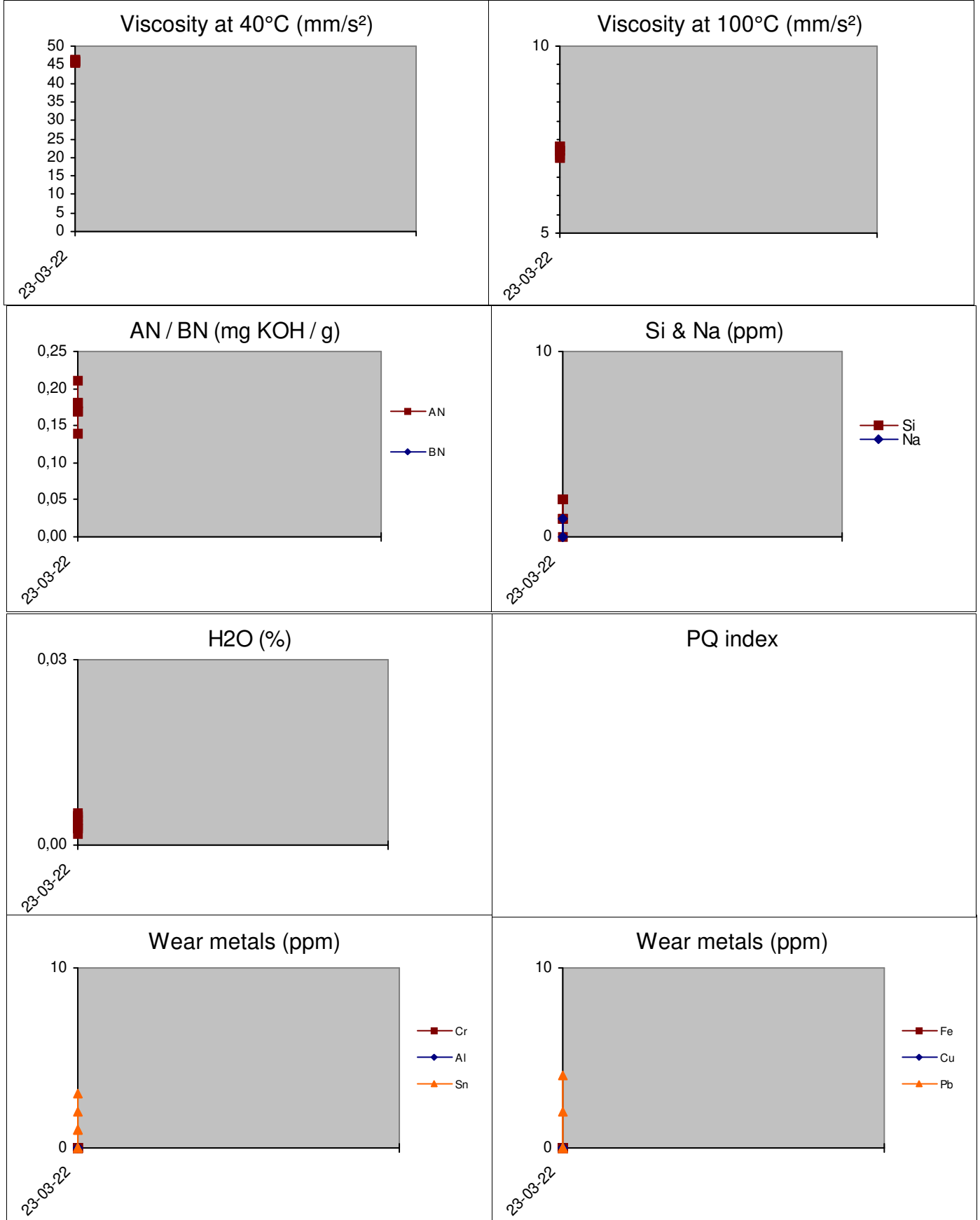
Batch: 2409405 - p.1 / 3

Diagnosis: ANW

Date of issue: 03/04/2024

B-20 ALPHA MAINTENANCE SYST..

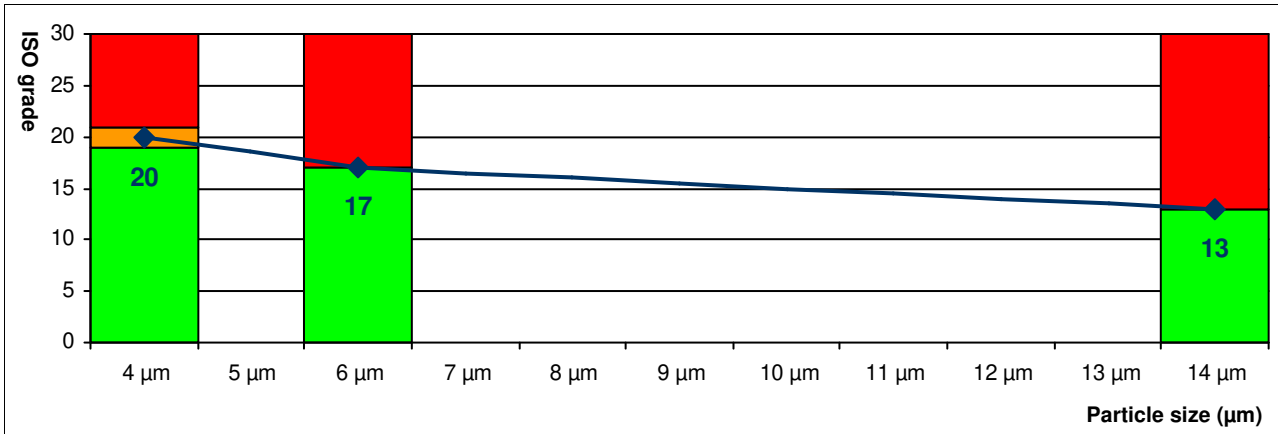
History 02.04.24 L004



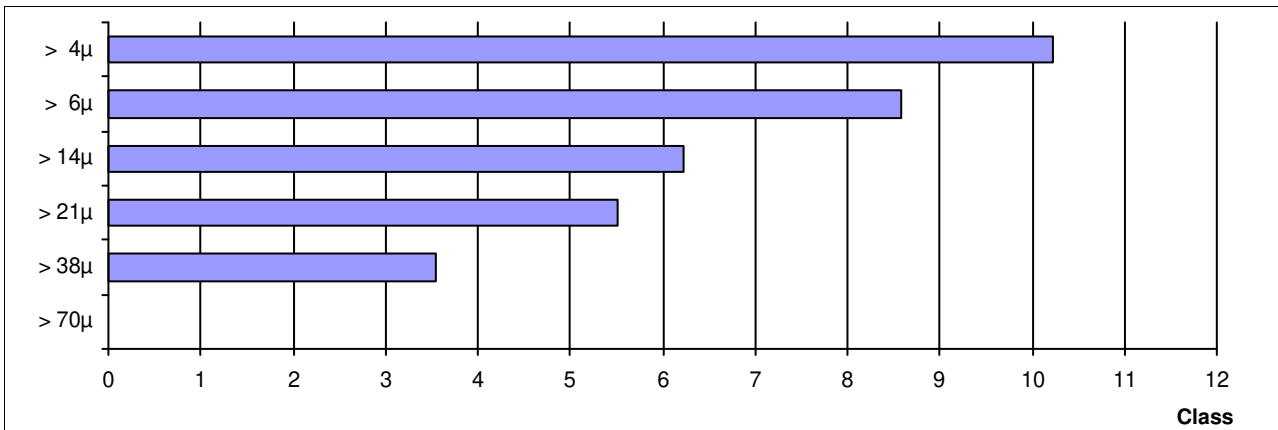
These conclusions are based on the tested supplied samples and information where the representativeness and validity cannot be guaranteed. Opinions and interpretation are outside the scope of accreditation. The measurement uncertainty is available on request. Samples are destroyed 2 months after receipt. The report may only be reproduced complete. Distribution on the responsibility of the client. *Methods are modified according to specified method. (A) Accreditation. (U) Outsourced. (k) Received info from customer.

ISO score (A)	20 / 17 / 13
AS4059 class (A)	11 A

ISO score (A) (4406:2021)	Particles / 100ml	Score
> 4µ (A)	984230	20
> 6µ (A)	122950	17
> 14µ (A)	4250	13
> 21µ (A)	460	
> 38µ (A)	20	
> 70µ (A)	0	



AS4059 class (A)	Particles / 100ml	Class
A:	> 4µ (A) 984230	A11
B:	> 6µ (A) 122950	B9
C:	> 14µ (A) 4250	C7
D:	> 21µ (A) 460	D6
E:	> 38µ (A) 20	E4
F:	> 70µ (A) 0	F000



These conclusions are based on the tested supplied samples and information where the representativeness and validity cannot be guaranteed. Opinions and interpretation are outside the scope of accreditation. The measurement uncertainty is available on request. Samples are destroyed 2 months after receipt. The report may only be reproduced complete. Distribution on the responsibility of the client. *Methods are modified according to specified method. (A) Accreditation. (U) Outsourced. (k) Received info from customer.