

System: HYDRAULIC SYSTEM
 Sump Capacity (k): ?
 Lubricant (k): UNIL HYDRO NT ISO 46
 Labocodenbr: 114652-TM.4
 Samplenummer: 02.04.24 L003
 Labelnummer: 201001109271
 Date sample drawn (k): 1.09.2023
 Sampling: by client

Customer (k): ISO 17025 AMS
 Address (k): Bergensesteenweg 713
 B- 1600 Sint-Pieters-Leeuw
 Your customer (k): BLIND STAAL 2
 Your ref. (k):



Oil



Pollution



Wear



Diagnostic

The oil is in good condition and the wear metals are considered normal. The particle pollution level is normal, indicating an appropriate filtration.

Normal

Results:	Method*	Unit	Current sample						02.04.24 L003
Analysis date			2/04/2024	21/03/2024	15/03/2024	12/03/2024	5/03/2024	27/02/2024	
Date of receipt			2/04/2024	21/03/2024	15/03/2024	12/03/2024	5/03/2024	27/02/2024	
Sample date (k)			1/09/2023	1/09/2023	1/09/2023	1/09/2023	1/09/2023	1/09/2023	
H/Km Oil (k)			?	?	?	?	?	?	
H/Km total (k)			?	?	?	?	?	?	
Top up (k)			?	?	?	?	?	?	
Oil Condition:									
Viscosity at 40°C	ASTM D7279	cSt	45.7	46.8	45.7	45.9	46.8	45.4	
Viscosity at 100°C	ASTM D7279	cSt	7.0	7.3	7.0	7.2	7.2	7.2	
Viscosity-index	ASTM D2270		111	118	111	118	114	120	
Fuel dilution	ASTM D7593	%							
AN	ASTM D8045	mg KOH/g	0.34	0.36	0.33	0.32	0.33	0.33	
BN	ASTM D2896B	mg KOH/g							
Oxidation	ASTM E2412 (A)	Abs/0.1mm	3.3	3.3	3.4	3.3	3.2	3.5	
Nitration	ASTM E2412	Abs/0.1mm	3.2	3.1	3.1	3.1	3.1	3.0	
PMCC	ASTM D93	°C							
COC	ASTM D92B	°C							
Color	ASTM D1500		2.0	1.5	2.0	1.5	2.0	1.5	
Additives:									
Ba: Barium	ASTM D5185	ppm	< 1	< 1	1	1	1	1	
Ca: Calcium	ASTM D5185 (A)	ppm	6	< 5	6	7	8	8	
Mg: Magnesium	ASTM D5185 (A)	ppm	< 5	< 5	< 5	< 5	< 5	< 5	
P: Phosphorus	ASTM D5185 (A)	ppm	164	168	166	192	182	171	
S: Sulfur	ASTM D5185	%	0.94	0.99	0.79	0.92	0.88	0.88	
Zn: Zink	ASTM D5185 (A)	ppm	6	< 5	9	8	7	6	
Pollution:									
Si: Silicon	ASTM D5185 (A)	ppm	< 10	< 10	< 10	< 10	< 10	< 10	
B: Boron	ASTM D5185	ppm	< 1	< 1	1	1	1	1	
Na: Sodium	ASTM D5185 (A)	ppm	< 5	< 5	< 5	< 5	< 5	< 5	
Water	WI-0002	%							
Water (KF)	ASTM D6304C	ppm	32	40	39	31	41	39	
Soot content	ASTM E2412 (A)	%							
Antifreeze	ASTM D2982A								
PC ISO grade	ASTM D7647 (A)		19/16/12	19/17/13	19/16/12	19/16/12	19/16/11	19/16/11	
PC Cleanliness class	ASTM D7647 (A)		10 A	9 A	9 A	10 A	9 A	9 A	
Insolubles	ASTM D4898	mg/l							
Wear metals:									
Al: Aluminium	ASTM D5185 (A)	ppm	< 5	< 5	< 5	< 5	< 5	< 5	
Cr: Chromium	ASTM D5185 (A)	ppm	< 5	< 5	< 5	< 5	< 5	< 5	
Cu: Copper	ASTM D5185 (A)	ppm	< 5	< 5	< 5	< 5	< 5	< 5	
Fe: Iron	ASTM D5185 (A)	ppm	< 5	< 5	< 5	< 5	< 5	< 5	
Mo: Molybdenum	ASTM D5185 (A)	ppm	< 5	< 5	< 5	< 5	< 5	< 5	
Pb: Lead	ASTM D5185 (A)	ppm	< 5	< 5	< 5	< 5	< 5	< 5	
Sn: Tin	ASTM D5185	ppm	1	< 1	< 1	< 1	< 1	< 1	
PQ index	WI-0021								

These conclusions are based on the tested supplied samples and information where the representativeness and validity cannot be guaranteed. Opinions and interpretation are outside the scope of accreditation. The measurement uncertainty is available on request. Samples are destroyed 2 months after receipt. The report may only be reproduced complete. Distribution on the responsibility of the client. *Methods are modified according to specified method. (A) Accreditation. (U) Outsourced. (k) Received info from customer.

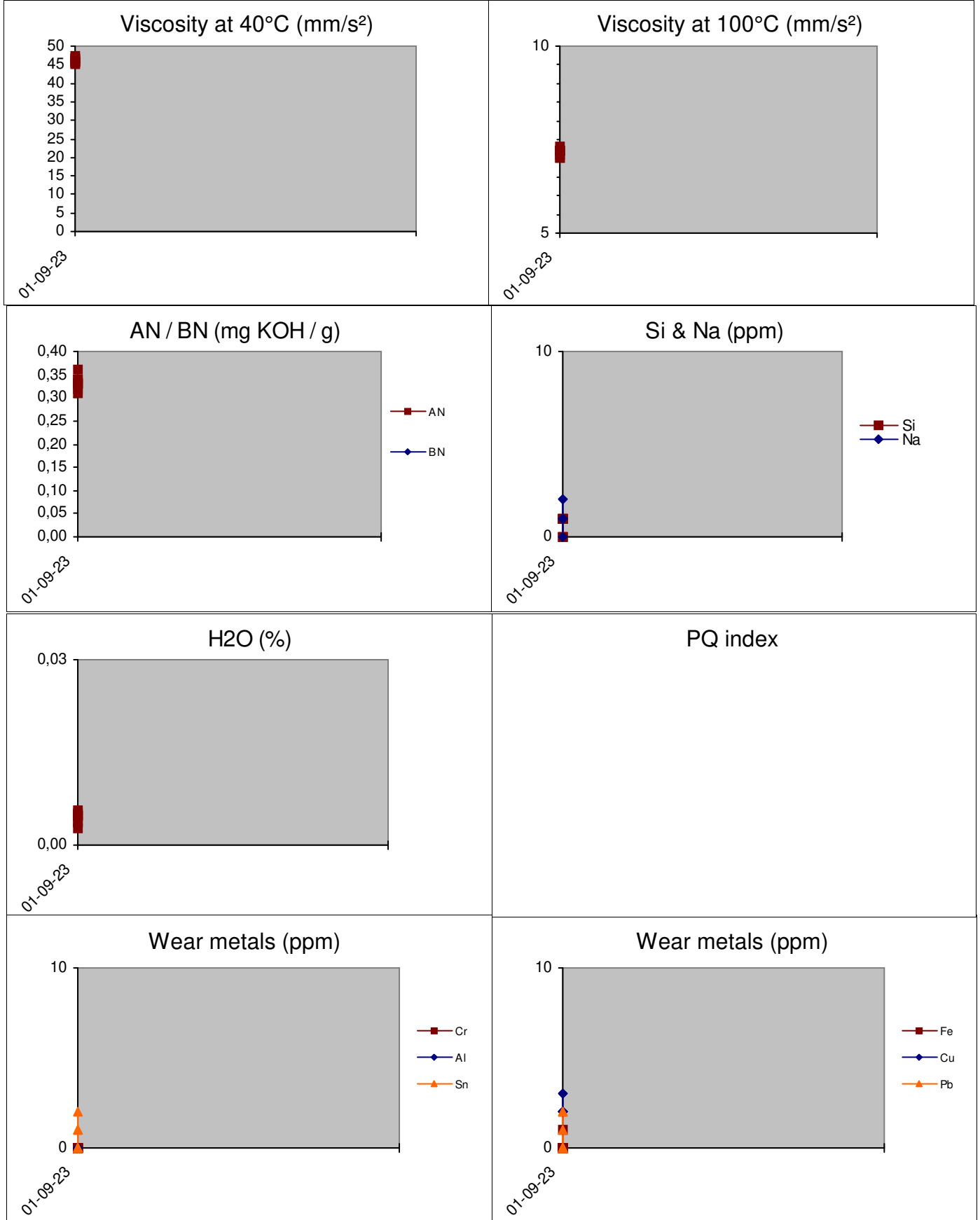
Batch: 2409405 - p.1 / 3

Diagnosis: ANW

Date of issue: 03/04/2024

B-20 ALPHA MAINTENANCE SYST..

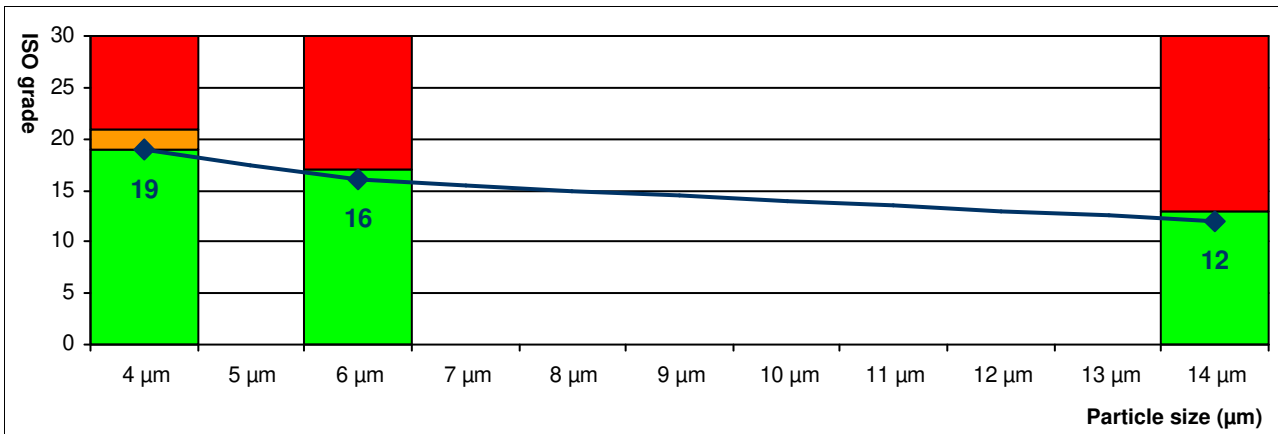
History 02.04.24 L003



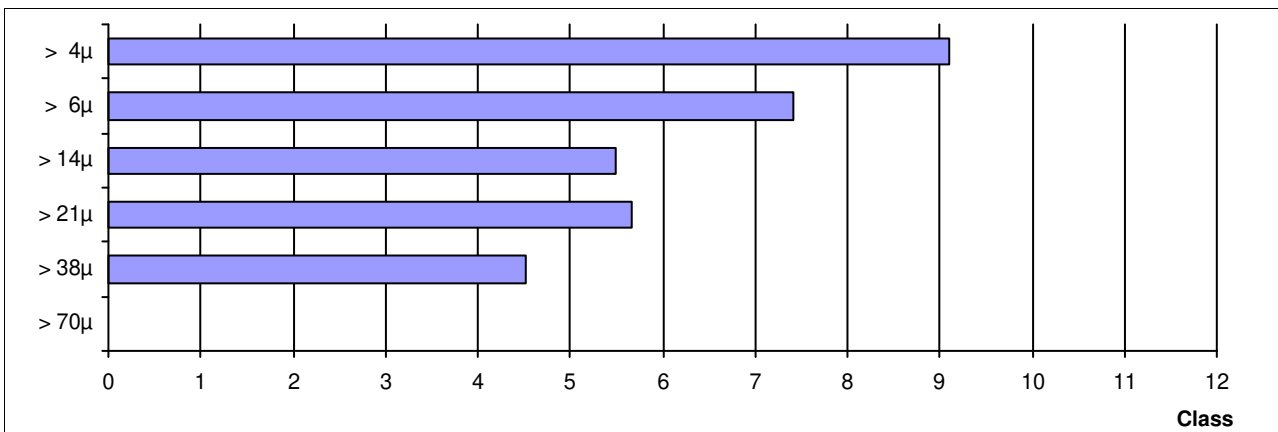
These conclusions are based on the tested supplied samples and information where the representativeness and validity cannot be guaranteed. Opinions and interpretation are outside the scope of accreditation. The measurement uncertainty is available on request. Samples are destroyed 2 months after receipt. The report may only be reproduced complete. Distribution on the responsibility of the client. *Methods are modified according to specified method. (A) Accreditation. (U) Outsourced. (k) Received info from customer.

ISO score (A)	19 / 16 / 12
AS4059 class (A)	10 A

ISO score (A) (4406:2021)	Particles / 100ml	Score
> 4µ (A)	439090	19
> 6µ (A)	55160	16
> 14µ (A)	2590	12
> 21µ (A)	510	
> 38µ (A)	40	
> 70µ (A)	0	



AS4059 class (A)	Particles / 100ml	Class
A:	> 4µ (A) 439090	A10
B:	> 6µ (A) 55160	B8
C:	> 14µ (A) 2590	C6
D:	> 21µ (A) 510	D6
E:	> 38µ (A) 40	E5
F:	> 70µ (A) 0	F000



These conclusions are based on the tested supplied samples and information where the representativeness and validity cannot be guaranteed. Opinions and interpretation are outside the scope of accreditation. The measurement uncertainty is available on request. Samples are destroyed 2 months after receipt. The report may only be reproduced complete. Distribution on the responsibility of the client. *Methods are modified according to specified method. (A) Accreditation, (U) Outsourced, (k) Received info from customer.