

System: HYDRAULIC SYSTEM  
 Sump Capacity: 5000 L  
 Lubricant: TOTAL ? ISO 46  
 Labocodenbr: 104316-CF.4  
 Samplenumbr: 12.04.24 L003  
 Labelnummer: 210000800500  
 Date sample drawn: 9.04.2024  
 Sampling: by client

Customer: NV REM B HYDRAULICS  
 0477660165  
 Address: Rouwbergskens 5  
 B- 2340 BEERSE  
 Your customer: HP5  
 Your ref.: R24P0807



Oil



Pollution



Wear



### Diagnostic

Attention: high ISO class. Attention: high copper content. The diagnose is incomplete while the make and type of the oil are not known.

Action

Results:	Method*	Unit	Current sample						12.04.24 L003
Analysis date			12/04/2024	21/03/2024	13/04/2023	29/04/2021	13/12/2019	25/11/2019	
Date of receipt			12/04/2024	21/03/2024	13/04/2023	29/04/2021	13/12/2019	25/11/2019	
Sample date			9/04/2024	18/03/2024	7/04/2023	23/04/2021	11/12/2019	20/11/2019	
H/Km Oil			?	?	?	?	?	?	
H/Km total			?	?	?	?	?	?	
Top up			?	?	?	?	?	?	

### Oil Condition:

Viscosity at 40°C	ASTM D7279	cSt	42.3	42.4	42.7	43.4	41.6	42.1
Viscosity at 100°C	ASTM D7279	cSt	7.5	7.6	7.4	7.5	7.4	7.5
Viscosity-index	ASTM D2270		145	149	139	140	145	146
Fuel dilution	ASTM D7593	%						
AN	ASTM D8045	mg KOH/g	0.54	0.56	0.50	0.44	0.47	0.73
BN	ASTM D2896B	mg KOH/g						
Oxidation	ASTM E2412	Abs/0.1mm	11.6	11.1	11.7	11.6	13.0	13.0
Nitration	ASTM E2412	Abs/0.1mm	2.3	2.2	2.0	2.0	2.8	2.8
PMCC	ASTM D93	°C						
COC	ASTM D92B	°C						
Color	ASTM D1500		4.0	6.5	2.0	2.0	1.5	7.5

### Additives:

Ba: Barium	ASTM D5185	ppm	1	< 1	< 1	< 1	< 1	< 1
Ca: Calcium	ASTM D5185	ppm	61	73	72	77	61	68
Mg: Magnesium	ASTM D5185	ppm	3	3	3	2	1	1
P: Phosphorus	ASTM D5185	ppm	275	327	342	363	352	345
S: Sulfur	ASTM D5185	%	0.18	0.23	0.21	0.28	0.47	0.45
Zn: Zink	ASTM D5185	ppm	338	413	399	441	411	423

### Pollution:

Si: Silicon	ASTM D5185	ppm	7	10	11	11	16	17
B: Boron	ASTM D5185	ppm	3	< 1	4	1	1	1
Na: Sodium	ASTM D5185	ppm	1	1	1	< 1	< 1	< 1
Water	WI-0002	%						
Water (KF)	ASTM D6304C	ppm	9	86	41	54	162	90
Soot content	ASTM E2412	%						
Antifreeze	ASTM D2982A							
PC ISO grade	ASTM D7647		24/19/14	25/23/14	25/22/11	25/22/12	21/14/10	25/21/15
PC Cleanliness class	ASTM D7647		> 12 A	> 12 A	> 12 A	> 12 A	11 A	> 12 A
Insolubles	ASTM D4898	mg/l						

### Wear metals:

Al: Aluminium	ASTM D5185	ppm	2	2	3	2	< 1	1
Cr: Chromium	ASTM D5185	ppm	2	2	2	2	2	6
Cu: Copper	ASTM D5185	ppm	51	80	74	48	23	26
Fe: Iron	ASTM D5185	ppm	8	16	14	8	2	7
Mo: Molybdenum	ASTM D5185	ppm	1	1	1	1	< 1	2
Pb: Lead	ASTM D5185	ppm	1	5	8	3	2	3
Sn: Tin	ASTM D5185	ppm	1	1	3	1	< 1	1
PQ index	WI-0021							

These conclusions are based on the tested supplied samples and information where the representativeness and validity cannot be guaranteed. Opinions and interpretation are outside the scope of accreditation. The measurement uncertainty is available on request. Samples are destroyed 2 months after receipt. The report may only be reproduced complete. Distribution on the responsibility of the client. \*Methods are modified according to specified method. (A)Accreditation. (U)Outsourced.

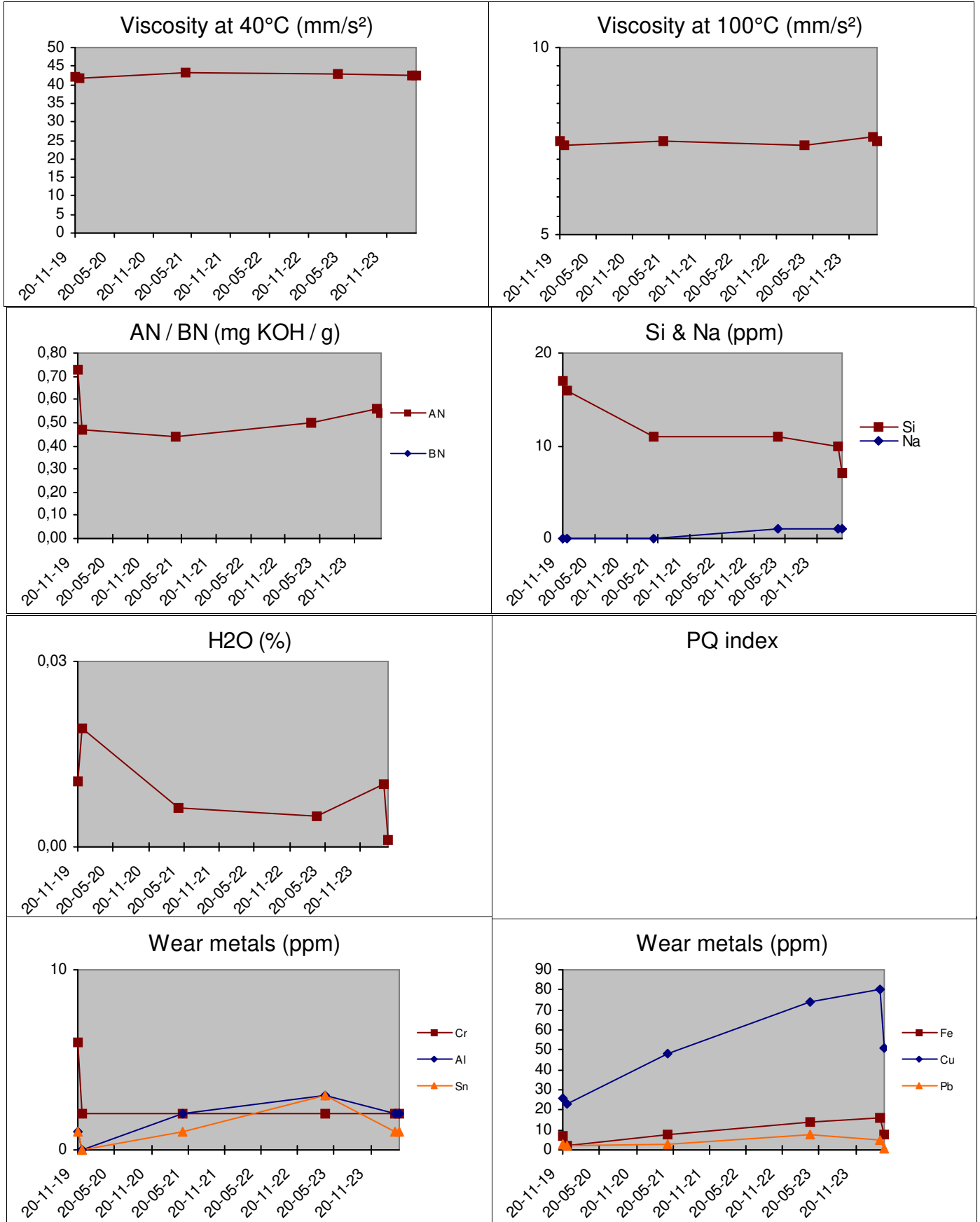
Batch: 2410601 - p.1 / 3

Diagnosis: ANW

Date of issue: 12/04/2024

B-68 REM B HYDRAULICS.

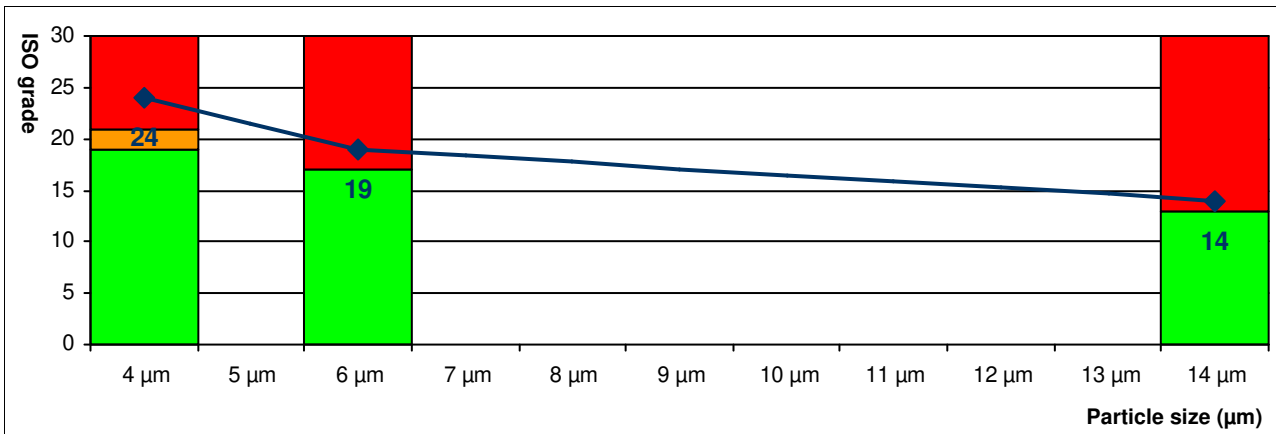
History 12.04.24 L003



These conclusions are based on the tested supplied samples and information where the representativeness and validity cannot be guaranteed. Opinions and interpretation are outside the scope of accreditation. The measurement uncertainty is available on request. Samples are destroyed 2 months after receipt. The report may only be reproduced complete. Distribution on the responsibility of the client. \*Methods are modified according to specified method. (A) Accreditation. (U) Outsourced.

<b>ISO score</b>	<b>24 / 19 / 14</b>
<b>AS4059 class</b>	<b>&gt; 12 A</b>

ISO score (4406:2021)	Particles / 100ml	Score
> 4μ	9359060	<b>24</b>
> 6μ	316690	<b>19</b>
> 14μ	10640	<b>14</b>
> 21μ	2660	
> 38μ	110	
> 70μ	0	



AS4059 class	Particles / 100ml	Class
A: > 4μ	9359060	>A12
B: > 6μ	316690	B11
C: > 14μ	10640	C8
D: > 21μ	2660	D9
E: > 38μ	110	E7
F: > 70μ	0	F000

