

System: UNKNOWN SYSTEM
 Sump Capacity (k): ?
 Lubricant (k): ANDEROL 6220 ISO 220
 Labocodenbr: 110111-CX.9
 Samplenummer: 31.08.23 G003
 Labelnummer: 209000800201
 Date sample drawn (k): 31.08.2023
 Sampling: by client

Customer (k): BV ANDEROL
 Dhr.JOOST VANNOORLOOS
 Address (k): GROOT EGTEENRAYSEWEG 23
 NL-5928 PA VENLO

Your customer (k): 103338476
 Your ref. (k):

Diagnostic



Oil



Pollution



Wear



Extra



The oil is in good condition and the wear metals are considered normal. The particle pollution level is normal, indicating an appropriate filtration.

Normal

Results:	Method*	Unit	Current sample	31.08.23 G003
----------	---------	------	----------------	---------------

Analysis date			31/08/2023	
Date of receipt			31/08/2023	
Sample date (k)			?	
H/Km Oil (k)			?	
H/Km total (k)			?	
Top up (k)			?	

Oil Condition:

Viscosity at 40°C	ASTM D7279	cSt	219.0	
Viscosity at 100°C	ASTM D7279	cSt	23.3	
Viscosity-index	ASTM D2270			
Fuel dilution	ASTM D7593	%		
AN	ASTM D8045	mg KOH/g	0.71	
BN	ASTM D2896B	mg KOH/g		
Oxidation	ASTM E2412 (A)	Abs/0.1mm	2.1	
Nitration	ASTM E2412	Abs/0.1mm	2.2	
PMCC	ASTM D93	°C		
COC	ASTM D92B	°C		
Color	ASTM D1500			

Additives:

Ba: Barium	ASTM D5185	ppm	1	
Ca: Calcium	ASTM D5185 (A)	ppm	< 5	
Mg: Magnesium	ASTM D5185 (A)	ppm	< 5	
P: Phosphorus	ASTM D5185 (A)	ppm	492	
S: Sulfur	ASTM D5185	%	0.04	
Zn: Zink	ASTM D5185 (A)	ppm	< 5	

Pollution:

Si: Silicium	ASTM D5185 (A)	ppm	< 10	
B: Boron	ASTM D5185	ppm	< 1	
Na: Sodium	ASTM D5185 (A)	ppm	< 5	
Water	WI-0002	%		
Water (KF)	ASTM D6304C	ppm	17	
Soot content	ASTM E2412 (A)	%		
Antifreeze	ASTM D2982A			
PC ISO grade	ASTM D7647 (A)		13/12/7	
PC Cleanliness class	ASTM D7647 (A)		4 A	
Insolubles	ASTM D4898	mg/l		

Wear metals:

Al: Aluminium	ASTM D5185 (A)	ppm	< 5	
Cr: Chromium	ASTM D5185 (A)	ppm	< 5	
Cu: Copper	ASTM D5185 (A)	ppm	< 5	
Fe: Iron	ASTM D5185 (A)	ppm	< 5	
Mo: Molybdenum	ASTM D5185 (A)	ppm	< 5	
Pb: Lead	ASTM D5185 (A)	ppm	< 5	
Sn: Tin	ASTM D5185	ppm	1	
PQ index	WI-0021			

These conclusions are based on the supplied samples and information where the representativeness and validity cannot be guaranteed. Opinions and interpretation are outside the scope of accreditation. The measurement uncertainty is available on request. Samples are destroyed 2 months after receipt. The report may only be reproduced complete. Distribution on the responsibility of the client. *Methods are modified according to specified method. (A)Accreditation. (U)Outsourced. (k) Received info from customer.

Batch: 2326201 - p.1 / 3

Diagnosis: ANW

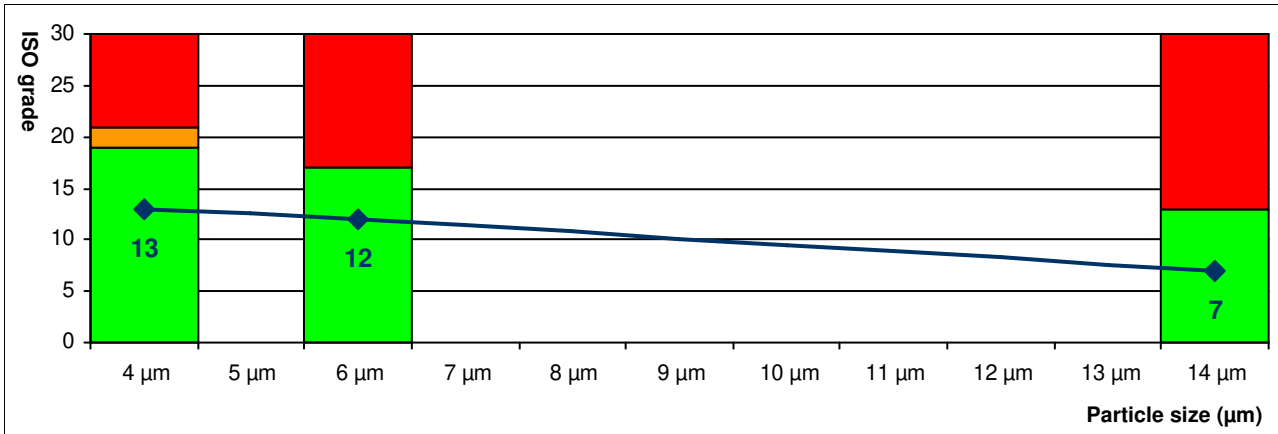
Date of issue: 19/09/2023

AN02 ANDEROL.

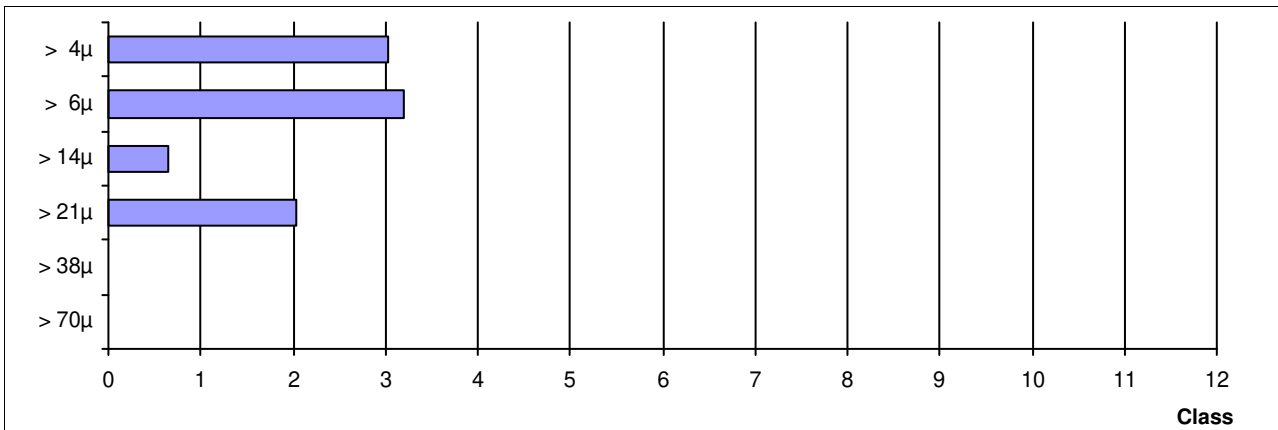
Extra tests:			Current sample	31.08.23 G003
Breakdown voltage	IEC 60156	kV		
Pour point	ASTM D97	°C		
RVPOt	ASTM D2272A	minits		
Ruler: Amine	ASTM D6971	RUL%		
Ruler: Phenols	ASTM D6971	RUL%		
MPC	ASTM D7843			
Air release	ASTM D3427 (U)	minutes		
Demulsibility	ASTM D1401 (U)	at 54.4°C		
Asphaltenes	ASTM D5660 (U)	%		
Carbon conradson	ASTM D4530 (U)	m%		
Sulphated ash content	ASTM D874	m%		
Foam test	Seq 1: 24°C, 5/10m	ml	200/20	
	Seq 2: 93.5°C, 5/10	ml	30/0	
	Seq 3: 24°C, 5/10m	ml	90/0	
pH	WI-0016			

ISO score (A)	13 / 12 / 7
AS4059 class (A)	4 A

ISO score (A) (4406:2021)	Particles / 100ml	Score
> 4µ (A)	6440	13
> 6µ (A)	2920	12
> 14µ (A)	90	7
> 21µ (A)	40	
> 38µ (A)	0	
> 70µ (A)	0	



AS4059 class (A)	Particles / 100ml	Class
A:	> 4µ (A) 6440	A4
B:	> 6µ (A) 2920	B4
C:	> 14µ (A) 90	C1
D:	> 21µ (A) 40	D3
E:	> 38µ (A) 0	E000
F:	> 70µ (A) 0	F000



These conclusions are based on the supplied samples and information where the representativeness and validity cannot be guaranteed. Opinions and interpretation are outside the scope of accreditation. The measurement uncertainty is available on request. Samples are destroyed 2 months after receipt. The report may only be reproduced complete. Distribution on the responsibility of the client. *Methods are modified according to specified method. (A)Accreditation. (U)Outsourced. (k) Received info from customer.