

System: UNKNOWN SYSTEM  
 Sump Capacity (k): ?  
 Lubricant (k): ANDEROL S ISO 68  
 Labocodenbr: 110111-er.9  
 Samplenummer: 26.04.24 G004  
 Labelnummer: 209000800196  
 Date sample drawn (k): 26.04.2024  
 Sampling: by client

Customer (k): BV ANDEROL  
 Dhr.JOOST VANNOORLOOS  
 Address (k): GROOT EGTEENRAYSEWEG 23  
 NL-5928 PA VENLO  
 Your customer (k): 103469679  
 Your ref. (k):

## Diagnostic



Oil



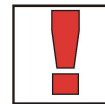
Pollution



Wear



Extra



We notice a low phosphorus content. The acid number of the oil is considered being high. Wear elements within tolerance. The particle pollution level is normal, indicating an appropriate filtration.

Action

Results:	Method*	Unit	Current sample	26.04.24 G004
----------	---------	------	----------------	---------------

Analysis date			26/04/2024	
Date of receipt			26/04/2024	
Sample date (k)			?	
H/Km Oil (k)			?	
H/Km total (k)			?	
Top up (k)			?	

## Oil Condition:

Viscosity at 40°C	ASTM D7279	cSt	62.4	
Viscosity at 100°C	ASTM D7279	cSt	9.8	
Viscosity-index	ASTM D2270		142	
Fuel dilution	ASTM D7593	%		
AN	ASTM D8045	mg KOH/g	0.73	
BN	ASTM D2896B	mg KOH/g		
Oxidation	ASTM E2412 (A)	Abs/0.1mm	33.4	
Nitration	ASTM E2412	Abs/0.1mm	2.3	
PMCC	ASTM D93	°C		
COC	ASTM D92B	°C		
Color	ASTM D1500			

## Additives:

Ba: Barium	ASTM D5185	ppm	< 1	
Ca: Calcium	ASTM D5185 (A)	ppm	< 5	
Mg: Magnesium	ASTM D5185 (A)	ppm	< 5	
P: Phosphorus	ASTM D5185 (A)	ppm	598	
S: Sulfur	ASTM D5185	%	0.03	
Zn: Zink	ASTM D5185 (A)	ppm	< 5	

## Pollution:

Si: Silicon	ASTM D5185 (A)	ppm	< 10	
B: Boron	ASTM D5185	ppm	1	
Na: Sodium	ASTM D5185 (A)	ppm	< 5	
Water	WI-0002	%		
Water (KF)	ASTM D6304C	ppm	10	
Soot content	ASTM E2412 (A)	%		
Antifreeze	ASTM D2982A			
PC ISO grade	ASTM D7647 (A)		18/16/11	
PC Cleanliness class	ASTM D7647 (A)		8 A	
Insolubles	ASTM D4898	mg/l		

## Wear metals:

Al: Aluminium	ASTM D5185 (A)	ppm	< 5	
Cr: Chromium	ASTM D5185 (A)	ppm	< 5	
Cu: Copper	ASTM D5185 (A)	ppm	< 5	
Fe: Iron	ASTM D5185 (A)	ppm	< 5	
Mo: Molybdenum	ASTM D5185 (A)	ppm	< 5	
Pb: Lead	ASTM D5185 (A)	ppm	< 5	
Sn: Tin	ASTM D5185	ppm	< 1	
PQ index	WI-0021			

These conclusions are based on the tested supplied samples and information where the representativeness and validity cannot be guaranteed. Opinions and interpretation are outside the scope of accreditation. The measurement uncertainty is available on request. Samples are destroyed 2 months after receipt. The report may only be reproduced complete. Distribution on the responsibility of the client. \*Methods are modified according to specified method. (A)Accreditation. (U)Outsourced. (k) Received info from customer.

Batch: 2412403 - p.1 / 3

Diagnosis: ANW

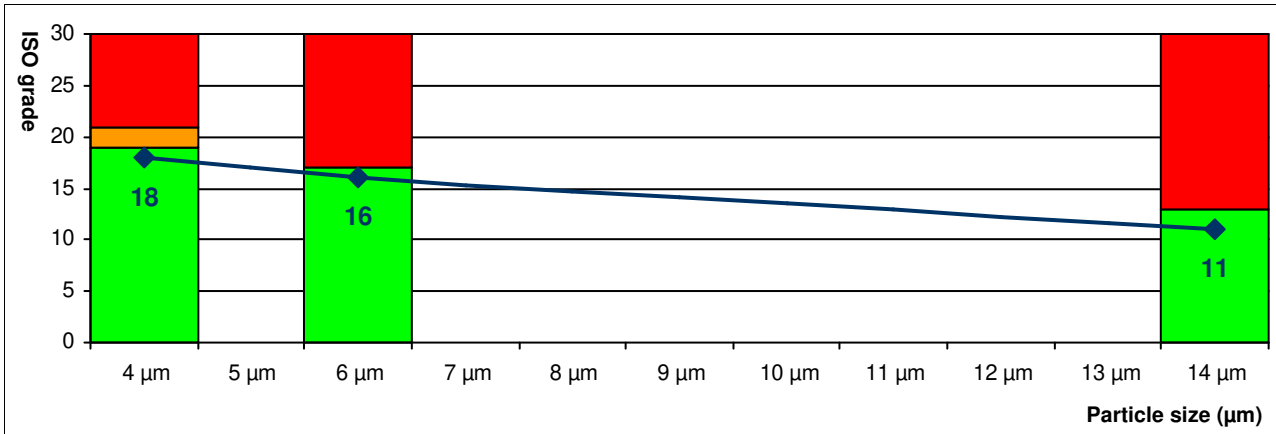
Date of issue: 03/05/2024

AN02 ANDEROL.

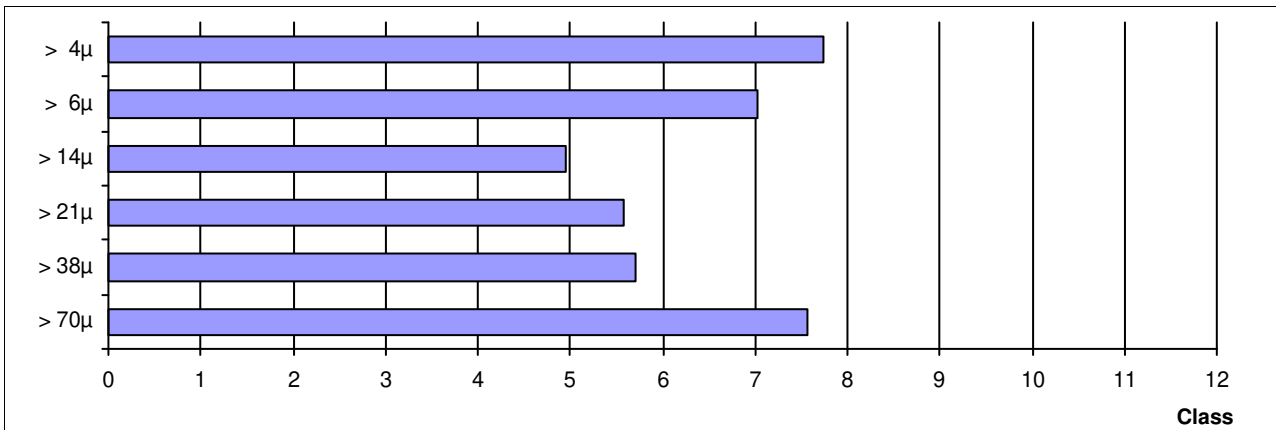
Extra tests:			Current sample	26.04.24 G004
Breakdown voltage	IEC 60156	kV		
Pour point	ASTM D97	°C		
RPVOT	ASTM D2272A	minits		
Ruler: Amine	ASTM D6971	RUL%		
Ruler: Phenols	ASTM D6971	RUL%		
MPC	ASTM D7843			
Air release	ASTM D3427 (U)	minutes		
Demulsibility	ASTM D1401 (U)	at 54.4°C		
Asphaltenes	ASTM D5660 (U)	%		
Carbon conradson	ASTM D4530 (U)	m%		
Sulphated ash content	ASTM D874	m%		
Foam test	Seq 1: 24°C, 5/10m	ml	150/0	
	Seq 2: 93.5°C, 5/10	ml	0/0	
	Seq 3: 24°C, 5/10m	ml	180/0	
pH	WI-0016			

<b>ISO score (A)</b>	<b>18 / 16 / 11</b>
<b>AS4059 class (A)</b>	<b>8 A</b>

ISO score (A) (4406:2021)	Particles / 100ml	Score
> 4µ (A)	173060	18
> 6µ (A)	39890	16
> 14µ (A)	1680	11
> 21µ (A)	480	
> 38µ (A)	90	
> 70µ (A)	50	



AS4059 class (A)	Particles / 100ml	Class
A:	> 4µ (A) 173060	A8
B:	> 6µ (A) 39890	B8
C:	> 14µ (A) 1680	C5
D:	> 21µ (A) 480	D6
E:	> 38µ (A) 90	E6
F:	> 70µ (A) 50	F8



These conclusions are based on the tested supplied samples and information where the representativeness and validity cannot be guaranteed. Opinions and interpretation are outside the scope of accreditation. The measurement uncertainty is available on request. Samples are destroyed 2 months after receipt. The report may only be reproduced complete. Distribution on the responsibility of the client. \*Methods are modified according to specified method. (A) Accreditation. (U) Outsourced. (k) Received info from customer.