

System: AIR COMPRESSOR  
Sump Capacity (k): 30 L  
Lubricant (k): ATLAS COPCO ROTO Z ISO 68  
Labocodenbr: 109897-XX.9  
Samplenummer: 05.06.24 O006  
Labelnummer: 429000801420  
Date sample drawn (k): 28.05.2024  
Sampling: by client

Customer (k): ATLAS COPCO RENTAL EUROPE  
Luc Despeghel  
Address (k): INDUSTRIEWEG 1F  
B- 2850 BOOM  
Your customer (k): 215122/14766  
Your ref. (k): S/215122/14766/ZT90

## Diagnostic



Oil



Pollution



Wear



The oil is in good condition and the wear metals are considered normal.

Normal

Results:	Method*	Unit	Current sample	05.06.24 O006
Analysis date			5/06/2024	16/10/2020
Date of receipt			5/06/2024	16/10/2020
Sample date (k)			28/05/2024	5/05/2020
H/Km Oil (k)			13330 H	4085 H
H/Km total (k)			13330 H	4085 H
Top up (k)			?	?
<b>Oil Condition:</b>				
Viscosity at 40°C	ASTM D7279	cSt	67.0	67.4
Viscosity at 100°C	ASTM D7279	cSt	9.3	9.6
Viscosity-index	ASTM D2270		117	124
Fuel dilution	ASTM D7593	%		
AN	ASTM D8045	mg KOH/g	0.32	0.39
BN	ASTM D2896B	mg KOH/g		
Oxidation	ASTM E2412 (A)	Abs/0.1mm	4.6	
Nitration	ASTM E2412	Abs/0.1mm	3.4	
PMCC	ASTM D93	°C		
COC	ASTM D92B	°C		
Color	ASTM D1500			
<b>Additives:</b>				
Ba: Barium	ASTM D5185	ppm	< 1	< 1
Ca: Calcium	ASTM D5185 (A)	ppm	5	< 5
Mg: Magnesium	ASTM D5185 (A)	ppm	< 5	< 5
P: Phosphorus	ASTM D5185 (A)	ppm	431	425
S: Sulfur	ASTM D5185	%	0.03	0.08
Zn: Zink	ASTM D5185 (A)	ppm	14	< 5
<b>Pollution:</b>				
Si: Silicon	ASTM D5185 (A)	ppm	< 10	< 10
B: Boron	ASTM D5185	ppm	< 1	< 1
Na: Sodium	ASTM D5185 (A)	ppm	< 5	< 5
Water	WI-0002	%		< 0.04
Water (KF)	ASTM D6304C	ppm	41	
Soot content	ASTM E2412 (A)	%		
Antifreeze	ASTM D2982A			
PC ISO grade	ASTM D7647 (A)			
PC Cleanliness class	ASTM D7647 (A)			
Insolubles	ASTM D4898	mg/l		
<b>Wear metals:</b>				
Al: Aluminium	ASTM D5185 (A)	ppm	< 5	< 5
Cr: Chromium	ASTM D5185 (A)	ppm	< 5	< 5
Cu: Copper	ASTM D5185 (A)	ppm	< 5	< 5
Fe: Iron	ASTM D5185 (A)	ppm	< 5	< 5
Mo: Molybdenum	ASTM D5185 (A)	ppm	< 5	< 5
Pb: Lead	ASTM D5185 (A)	ppm	< 5	< 5
Sn: Tin	ASTM D5185	ppm	< 1	< 1
PQ index	WI-0021			

These conclusions are based on the tested supplied samples and information where the representativeness and validity cannot be guaranteed. Opinions and interpretation are outside the scope of accreditation. The measurement uncertainty is available on request. Samples are destroyed 2 months after receipt. The report may only be reproduced complete. Distribution on the responsibility of the client. \*Methods are modified according to specified method. (A) Accreditation. (U) Outsourced. (k) Received info from customer.

Batch: 2415805 - p.1 / 3

Diagnosis: ANW

Date of issue: 06/06/2024

B118 AC RENTAL EUROPE.

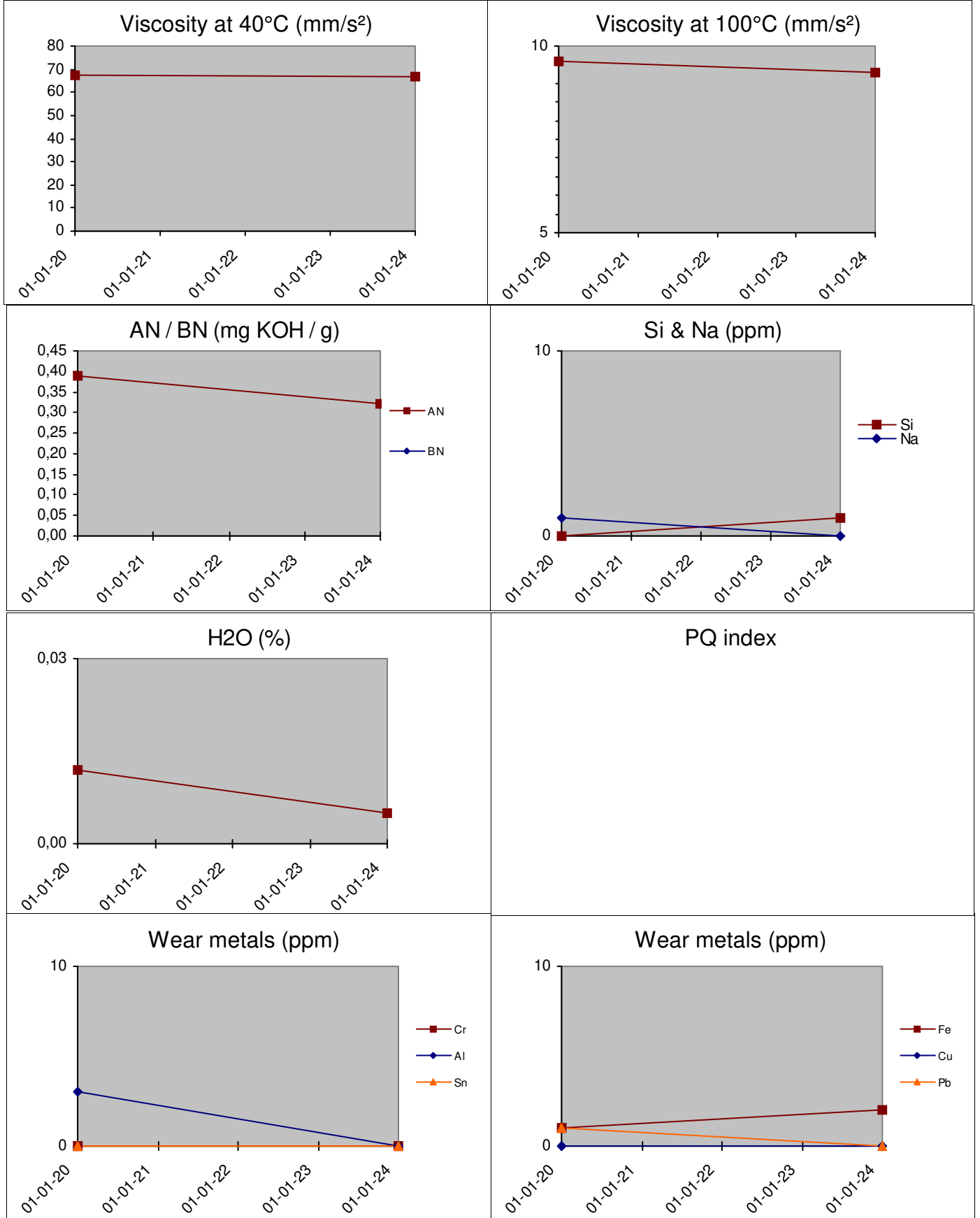


## History lubricant:

05.06.24 0006

1	05.06.24 0006	ATLAS COPCO ROTO Z ISO 68
2	16.10.20 G013	ATLAS COPCO ROTO Z
3		
4		
5		
6		

History 05.06.24 0006



These conclusions are based on the tested supplied samples and information where the representativeness and validity cannot be guaranteed. Opinions and interpretation are outside the scope of accreditation. The measurement uncertainty is available on request. Samples are destroyed 2 months after receipt. The report may only be reproduced complete. Distribution on the responsibility of the client. \*Methods are modified according to specified method. (A) Accreditation, (U) Outsourced, (k) Received info from customer.