

System: HYDRAULIC SYSTEM
 Sump Capacity: 40 L
 Lubricant: TOTAL AZOLLA ISO 46
 Labocodenbr: 104316-VF.4
 Samplenummer: 08.07.24 L008
 Labelnummer: 210000800705
 Date sample drawn: 8.07.2024
 Sampling: by client

Customer: NV REM B HYDRAULICS
 0477660165
 Address: Rouwbergskens 5
 B- 2340 BEERSE
 Your customer:
 Your ref.: R24P1182

Diagnostic



Oil



Pollution



Wear



The ISO 4406 indicates the presence of very small particles (<6µm). Wear elements within tolerance. The other characteristics are considered as normal.

Attention

Results: Method* Unit Current sample 08.07.24 L008

Results:	Method*	Unit	Current sample	08.07.24 L008
Analysis date			8/07/2024	
Date of receipt			8/07/2024	
Sample date			?	
H/Km Oil			?	
H/Km total			?	
Top up			?	

Oil Condition:

Viscosity at 40°C	ASTM D7279	cSt	44.9
Viscosity at 100°C	ASTM D7279	cSt	7.1
Viscosity-index	ASTM D2270		118
Fuel dilution	ASTM D7593	%	
AN	ASTM D8045	mg KOH/g	0.41
BN	ASTM D2896B	mg KOH/g	
Oxidation	ASTM E2412	Abs/0.1mm	2.8
Nitration	ASTM E2412	Abs/0.1mm	2.7
PMCC	ASTM D93	°C	
COC	ASTM D92B	°C	
Color	ASTM D1500		1.0

Additives:

Ba: Barium	ASTM D5185	ppm	< 1
Ca: Calcium	ASTM D5185	ppm	62
Mg: Magnesium	ASTM D5185	ppm	1
P: Phosphorus	ASTM D5185	ppm	390
S: Sulfur	ASTM D5185	%	0.54
Zn: Zink	ASTM D5185	ppm	488

Pollution:

Si: Silicon	ASTM D5185	ppm	2
B: Boron	ASTM D5185	ppm	1
Na: Sodium	ASTM D5185	ppm	< 1
Water	WI-0002	%	
Water (KF)	ASTM D6304C	ppm	41
Soot content	ASTM E2412	%	
Antifreeze	ASTM D2982A		
PC ISO grade	ASTM D7647		23/17/13
PC Cleanliness class	ASTM D7647		> 12 A
Insolubles	ASTM D4898	mg/l	

Wear metals:

Al: Aluminium	ASTM D5185	ppm	2
Cr: Chromium	ASTM D5185	ppm	< 1
Cu: Copper	ASTM D5185	ppm	2
Fe: Iron	ASTM D5185	ppm	< 1
Mo: Molybdenum	ASTM D5185	ppm	< 1
Pb: Lead	ASTM D5185	ppm	< 1
Sn: Tin	ASTM D5185	ppm	< 1
PQ index	WI-0021		

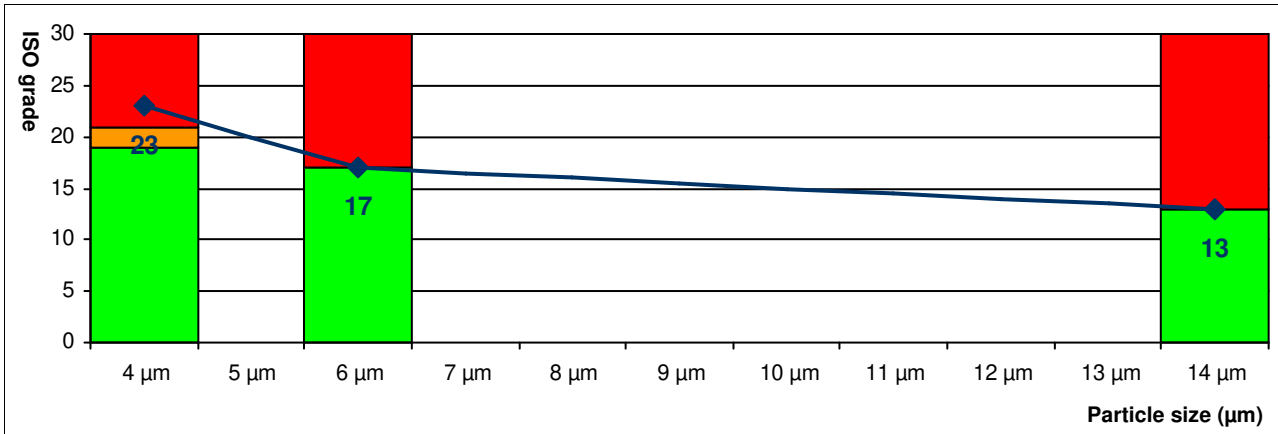
These conclusions are based on the tested supplied samples and information where the representativeness and validity cannot be guaranteed. Opinions and interpretation are outside the scope of accreditation. The measurement uncertainty is available on request. Samples are destroyed 2 months after receipt. The report may only be reproduced complete. Distribution on the responsibility of the client. *Methods are modified according to specified method. (A)Accreditation. (U)Outsourced.

Batch: 2419301 - p.1 / 2 Diagnosis: ANW Date of issue: 11/07/2024 B-68 REM B HYDRAULICS.

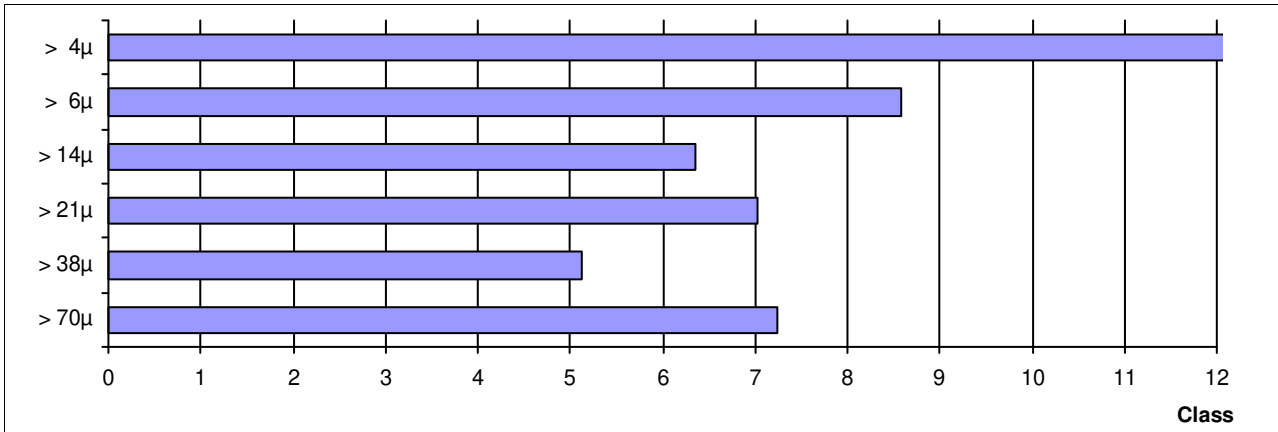
REM-B HYDRAULICS - Rouwbergskens 5 - 2340 Beerse - Belgium - tel: +32 (0)14 622 860 - fax: +32 (0)14 622 867 - www.remb.be.

ISO score	23 / 17 / 13
AS4059 class	> 12 A

ISO score (4406:2021)	Particles / 100ml	Score
> 4μ	4845460	23
> 6μ	123540	17
> 14μ	4700	13
> 21μ	1260	
> 38μ	60	
> 70μ	40	



AS4059 class	Particles / 100ml	Class
A: > 4μ	4845460	>A12
B: > 6μ	123540	B9
C: > 14μ	4700	C7
D: > 21μ	1260	D8
E: > 38μ	60	E6
F: > 70μ	40	F8



These conclusions are based on the tested supplied samples and information where the representativeness and validity cannot be guaranteed. Opinions and interpretation are outside the scope of accreditation. The measurement uncertainty is available on request. Samples are destroyed 2 months after receipt. The report may only be reproduced complete. Distribution on the responsibility of the client. *Methods are modified according to specified method. (A)Accreditation. (U)Outsourced.