

System: AIR COMPRESSOR
Sump Capacity (k): 55 L
Lubricant (k): ATLAS COPCO ROTO Z ISO 68
Labocodenbr: 109897-hs.9
Samplenummer: 12.07.24 O009
Labelnummer: 429000801871
Date sample drawn (k): 6.05.2024
Sampling: by client

Customer (k): ATLAS COPCO RENTAL EUROPE
Luc Despeghel
Address (k): INDUSTRIEWEG 1F
B- 2850 BOOM
Your customer (k): 338537/17964
Your ref. (k):

Diagnostic



Oil



Pollution



Wear



The content(s) of additive(s) deviate(s) for this type of oil. The acid number of the oil is considered being borderline high. The other characteristics are considered as normal.

Attention

Results:	Method*	Unit	Current sample	12.07.24 O009
Analysis date			12/07/2024	4/01/2022
Date of receipt			12/07/2024	4/01/2022
Sample date (k)			6/05/2024	16/12/2021
H/Km Oil (k)			15380 H	459 H
H/Km total (k)			15380 H	14939 H
Top up (k)			?	?
Oil Condition:				
Viscosity at 40°C	ASTM D7279	cSt	69.8	78.5
Viscosity at 100°C	ASTM D7279	cSt	9.8	10.8
Viscosity-index	ASTM D2270		123	126
Fuel dilution	ASTM D7593	%		
AN	ASTM D8045	mg KOH/g	1.16	2.69
BN	ASTM D2896B	mg KOH/g		
Oxidation	ASTM E2412 (A)	Abs/0.1mm	5.5	9.6
Nitration	ASTM E2412	Abs/0.1mm	3.9	3.8
PMCC	ASTM D93	°C		
COC	ASTM D92B	°C		
Color	ASTM D1500			
Additives:				
Ba: Barium	ASTM D5185	ppm	< 1	< 1
Ca: Calcium	ASTM D5185 (A)	ppm	1126	2870
Mg: Magnesium	ASTM D5185 (A)	ppm	97	246
P: Phosphorus	ASTM D5185 (A)	ppm	629	857
S: Sulfur	ASTM D5185	%	0.08	0.32
Zn: Zink	ASTM D5185 (A)	ppm	407	1043
Pollution:				
Si: Silicon	ASTM D5185 (A)	ppm	< 10	< 10
B: Boron	ASTM D5185	ppm	341	376
Na: Sodium	ASTM D5185 (A)	ppm	6	10
Water	WI-0002	%		< 0.04
Water (KF)	ASTM D6304C	ppm	308	
Soot content	ASTM E2412 (A)	%		
Antifreeze	ASTM D2982A			
PC ISO grade	ASTM D7647 (A)			
PC Cleanliness class	ASTM D7647 (A)			
Insolubles	ASTM D4898	mg/l		
Wear metals:				
Al: Aluminium	ASTM D5185 (A)	ppm	< 5	< 5
Cr: Chromium	ASTM D5185 (A)	ppm	< 5	< 5
Cu: Copper	ASTM D5185 (A)	ppm	< 5	< 5
Fe: Iron	ASTM D5185 (A)	ppm	< 5	7
Mo: Molybdenum	ASTM D5185 (A)	ppm	16	44
Pb: Lead	ASTM D5185 (A)	ppm	< 5	< 5
Sn: Tin	ASTM D5185	ppm	1	2
PQ index	WI-0021			

These conclusions are based on the tested supplied samples and information where the representativeness and validity cannot be guaranteed. Opinions and interpretation are outside the scope of accreditation. The measurement uncertainty is available on request. Samples are destroyed 2 months after receipt. The report may only be reproduced complete. Distribution on the responsibility of the client. *Methods are modified according to specified method. (A)Accreditation. (U)Outsourced. (k) Received info from customer.

Batch: 2419801 - p.1 / 3

Diagnosis: KDS

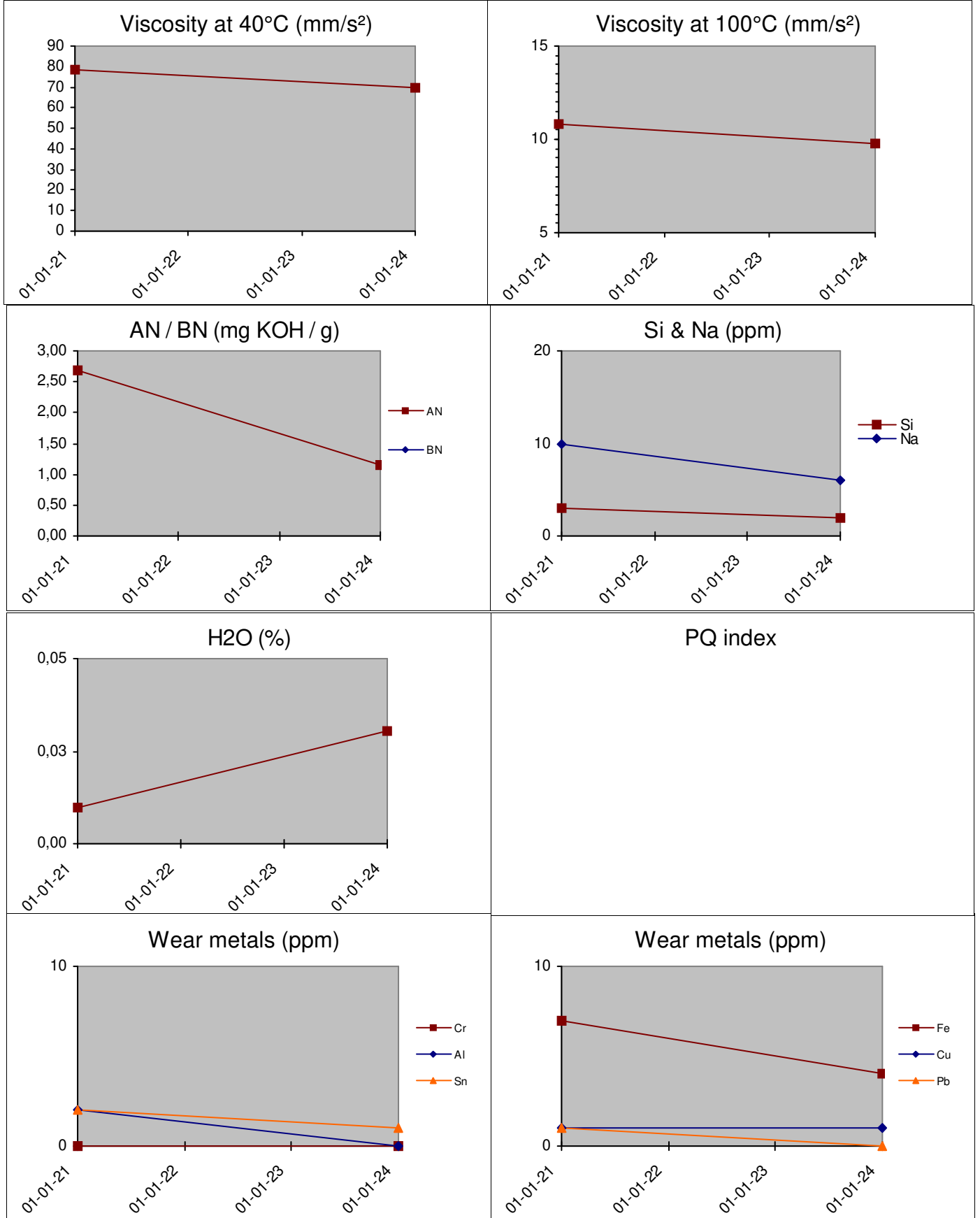
Date of issue: 16/07/2024

B118 AC RENTAL EUROPE.



History lubricant:			12.07.24 0009
1	12.07.24 0009	ATLAS COPCO ROTO Z ISO 68	
2	04.01.22 0017	ATLAS PAROIL E MISS.GREEN SAE 15W40	
3			
4			
5			
6			

History 12.07.24 0009



These conclusions are based on the tested supplied samples and information where the representativeness and validity cannot be guaranteed. Opinions and interpretation are outside the scope of accreditation. The measurement uncertainty is available on request. Samples are destroyed 2 months after receipt. The report may only be reproduced complete. Distribution on the responsibility of the client. *Methods are modified according to specified method. (A) Accreditation, (U) Outsourced, (k) Received info from customer.