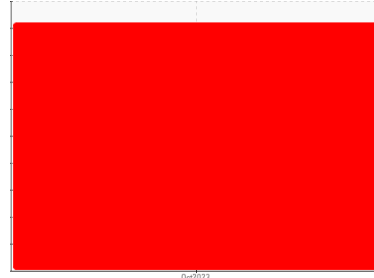




Sample Rating Trend



Machine Id  
**THERMINOL 66**

Component

Fluid  
**EASTMAN THERMINOL 66 (--- LTR)**

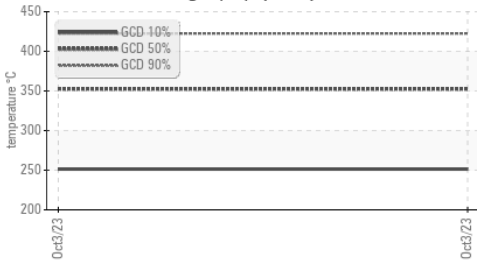
**DIAGNOSIS**

▲ This is a baseline read-out on the submitted sample.

▲ (GCD) % < 335°C is severely high. (GCD) 90% Distillation Point is severely high. (GCD) 10% Distillation Point is severely low. Visc @ 40°C is severely low. Pensky-Martens Flash Point is abnormal.

	method	limit/base	current	history1	history2
	Client Info		<b>WC</b>	---	---
	Client Info		<b>03 Oct 2023</b>	---	---
hrs	Client Info		<b>0</b>	---	---
hrs	Client Info		<b>0</b>	---	---
	Client Info		<b>N/A</b>	---	---
			<b>SEVERE</b>	---	---
	method	limit/base	current	history1	history2
	WC Method	>0.0601	<b>NEG</b>	---	---
	method	limit/base	current	history1	history2
mg KOH/g	ASTM D974*	0.03	<b>0.02</b>	---	---
	method	limit/base	current	history1	history2
	scalar Visual*	NONE	<b>NONE</b>	---	---
	scalar Visual*	NONE	<b>NONE</b>	---	---
	scalar Visual*	NONE	<b>NONE</b>	---	---
	scalar Visual*	NONE	<b>NONE</b>	---	---
	scalar Visual*	NONE	<b>NONE</b>	---	---
	scalar Visual*	NONE	<b>NONE</b>	---	---
	scalar Visual*	NORML	<b>NORML</b>	---	---
	scalar Visual*	NORML	<b>NORML</b>	---	---
	method	limit/base	current	history1	history2
	ASTM D1298 *	1.012	<b>1.035</b>	---	---
cSt	ASTM D7279(m)	29.6	▲ <b>13.9</b>	---	---
°C	ASTM D7215*	170	▲ <b>137.6</b>	---	---
	method	limit/base	current	history1	history2
°C	ASTM D2887*	2.00	▲ <b>28.03</b>	---	---
°C	ASTM D2887*		<b>236.1</b>	---	---
°C	ASTM D2887*		<b>247.6</b>	---	---
°C	ASTM D2887*	348	▲ <b>251.4</b>	---	---
°C	ASTM D2887*		<b>253.7</b>	---	---
°C	ASTM D2887*		<b>340.7</b>	---	---
°C	ASTM D2887*		<b>346.4</b>	---	---
°C	ASTM D2887*		<b>352.6</b>	---	---
°C	ASTM D2887*		<b>355.2</b>	---	---
°C	ASTM D2887*		<b>360.0</b>	---	---
°C	ASTM D2887*		<b>362.8</b>	---	---
°C	ASTM D2887*	392	▲ <b>422.5</b>	---	---
°C	ASTM D2887*		<b>504.7</b>	---	---

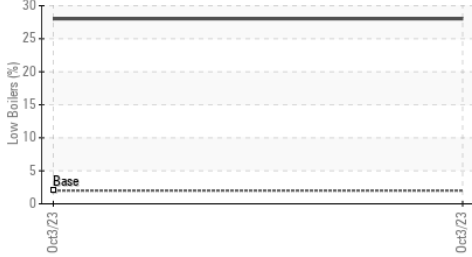
### Gas Chromatography (GCD)



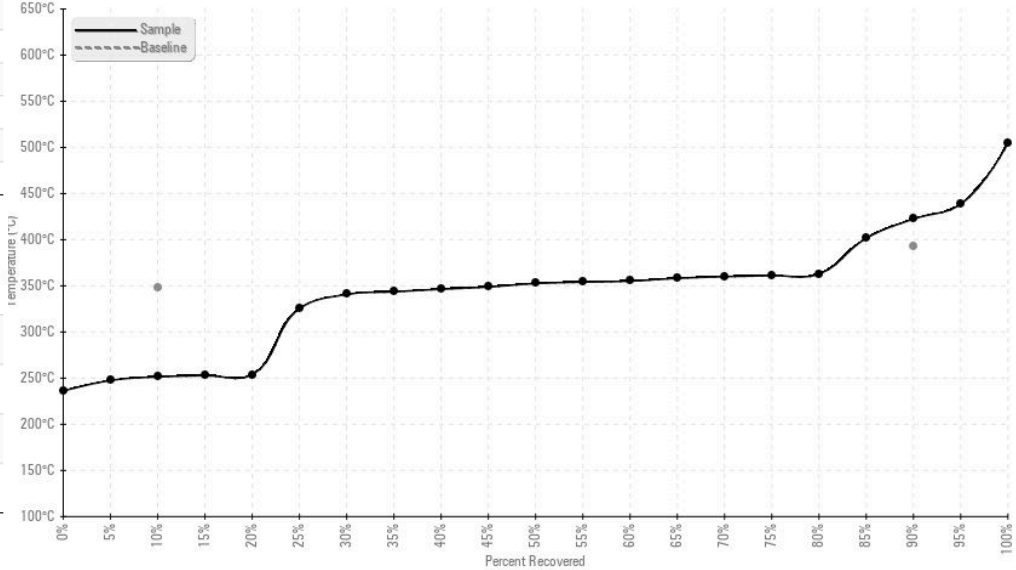
method	limit/base	current	history1	history2
			no image	no image
			no image	no image

### GRAPHS

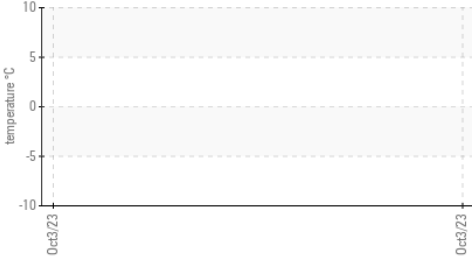
#### % Boiling < 335°C



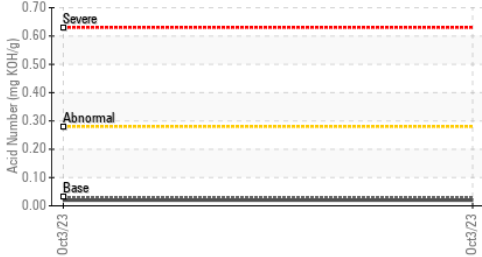
#### Gas Chromatography Distillation (GCD)



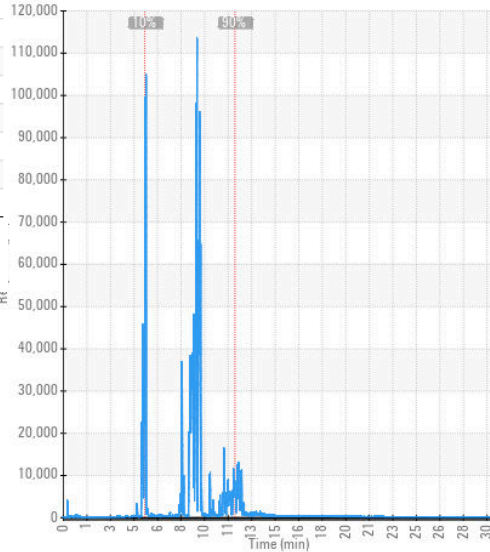
#### Flash Point (°C)



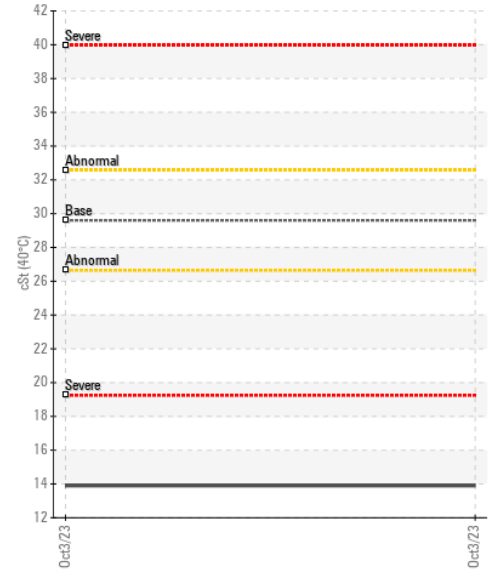
#### Acid Number



#### GCD Spectrum



#### Viscosity @ 40°C



#### Flash Point (°C)



**Laboratory** : WearCheck - C8-1175 Appleby Line, Burlington, ON L7L 5H9  
**Sample No.** : WC  
**Lab Number** : 02586967  
**Unique Number** : 5656033  
**Test Package** : TEST ( Additional Tests: API, CC Flash, Cetane, COC Flash, Fuel, GC-PercFuel, GCD, KV40, Spectro)

**Alpha Maintenance Systems**  
 WearCheck Belgium, 713 Bergensesteenweg  
 St.-Pieters-Leeuw, ZZ  
 BE B-1600

To discuss this sample report, contact Customer Service at 1-800-268-2131.

Test denoted (\*) outside scope of accreditation, (m) method modified, (e) tested at external lab.

Validity of results and interpretation are based on the sample and information as supplied.

Contact: André Verlinden  
andre.verlinden@alphams.eu

T: 3(202)365-0229

F: 3(202)361-3458