



# FILTER DEBRIS ANALYSIS

WEAR PARTICLES  
CONTAMINANTS

**ABNORMAL**

**NORMAL**

Machine Id  
**DISJONCTEUR 300-2 LANGELIER**

Component  
**Filter**

Fluid  
**{not provided} (--- LTR)**

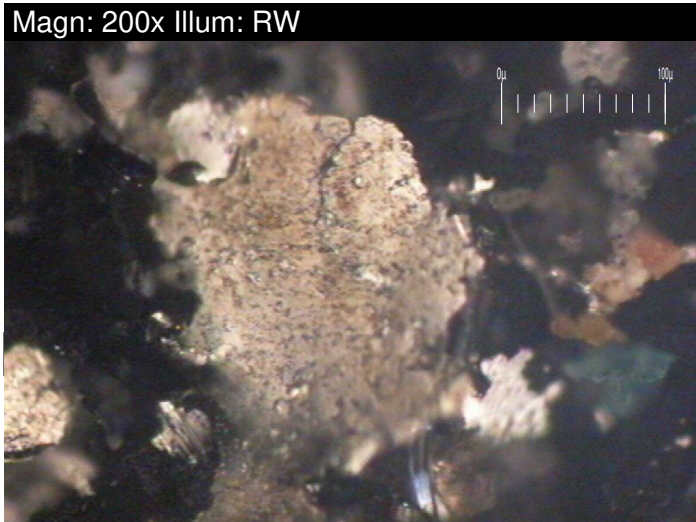
## RECOMMENDATION

Oil and filter change at the time of sampling has been noted. We recommend that you drain the filter from the component if this has not already been done. We recommend an early resample to monitor this condition.

## WEAR PARTICLES

The filter contained a light concentration of ferrous rolling fatigue wear particles, nonferrous rolling fatigue wear particles, and ferrous sliding wear particles. Gear wear is indicated. Bearing wear is indicated.

Magn: 200x Illum: RW



Test	UOM	Method	Limit/Abn	Current	History1	History2
Sample Number		Client Info		PP	---	---
Sample Date		Client Info		22 Sep 2011	---	---
Machine Age	days	Client Info		0	---	---
Oil Age	days	Client Info		0	---	---
Filter Age	days	Client Info		0	---	---
Oil Changed		Client Info		N/A	---	---
Filter Changed		Client Info		N/A	---	---
Sample Status				ABNORMAL	---	---
Ferrous Rubbing	Scale 0-10	ASTM D7684*		3		
Ferrous Sliding	Scale 0-10	ASTM D7684*		2		
Ferrous Cutting	Scale 0-10	ASTM D7684*				
Ferrous Rolling	Scale 0-10	ASTM D7684*		3		
Ferrous Break-in	Scale 0-10	ASTM D7684*				
Ferrous Spheres	Scale 0-10	ASTM D7684*				
Ferrous Black Oxides	Scale 0-10	ASTM D7684*		3		
Ferrous Red Oxides	Scale 0-10	ASTM D7684*				
Ferrous Corrosive	Scale 0-10	ASTM D7684*		2		
Ferrous Other	Scale 0-10	ASTM D7684*				
Nonferrous Rubbing	Scale 0-10	ASTM D7684*				
Nonferrous Sliding	Scale 0-10	ASTM D7684*				
Nonferrous Cutting	Scale 0-10	ASTM D7684*				
Nonferrous Rolling	Scale 0-10	ASTM D7684*		2		
Nonferrous Other	Scale 0-10	ASTM D7684*				
Sand/Dirt	Scale 0-10	ASTM D7684*		3		
Fibres	Scale 0-10	ASTM D7684*				
Spheres	Scale 0-10	ASTM D7684*				
Other	Scale 0-10	ASTM D7684*				
Patch Weight	mg	ASTM D7684*		33	---	---

Magn: 200x Illum: RW



ISO 17025:2017  
Accredited  
Laboratory

**Laboratory** : WearCheck - C8-1175 Appleby Line, Burlington, ON L7L 5H9

**Sample No.** : PP

**Lab Number** : 01714271

**Unique Number** : 3388114

**Test Package** : FLTRO

**Received** : 04 Oct 2011

**Tested** : 04 Oct 2011

**Diagnosed** : 06 Oct 2011 - Bill Quesnel

*To discuss this sample report, contact Customer Service at 1-800-268-2131.*

*Test denoted (\*) outside scope of accreditation, (m) method modified, (e) tested at external lab.*

*Validity of results and interpretation are based on the sample and information as supplied.*

**HYDRO QUEBEC**

5625 HOCHELAGA

MONTREAL, QC

CA H1N 1W2

Contact: Steve Laberge

laberge.steve@hydro.qc.ca

T: (514)770-8294

F: (514)251-6672

*This page left intentionally blank*