

Area
[AU130951]
 Machine Id
72056383
 Component
Diesel Fuel
 Fluid
No.2 DIESEL FUEL (LOW-SULPHUR) (--- GAL)

RECOMMENDATION

We advise that you check for the source of water entry. We advise that you filter this fluid before use. We advise that you follow the water drain-off procedure for this component. The filter change at the time of sampling has been noted. We recommend an early resample to monitor this condition.

CORROSION

{not applicable}

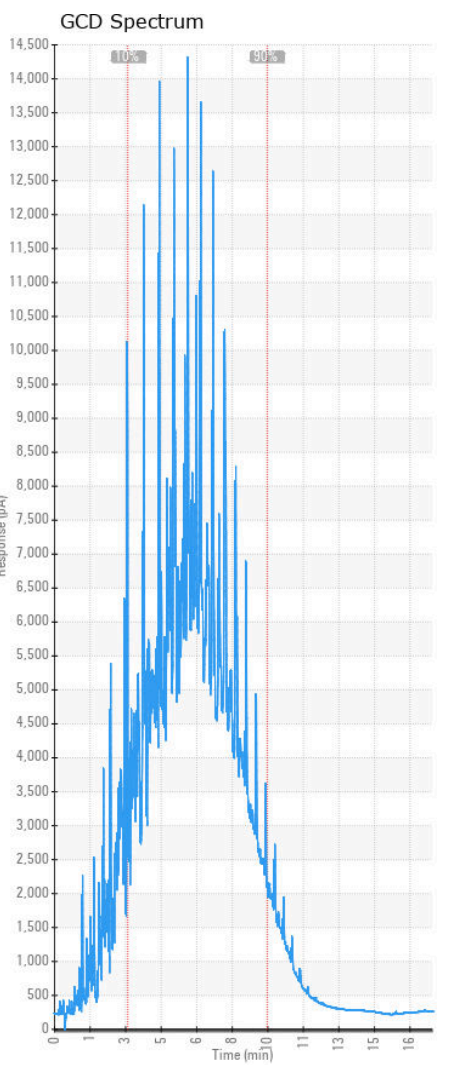
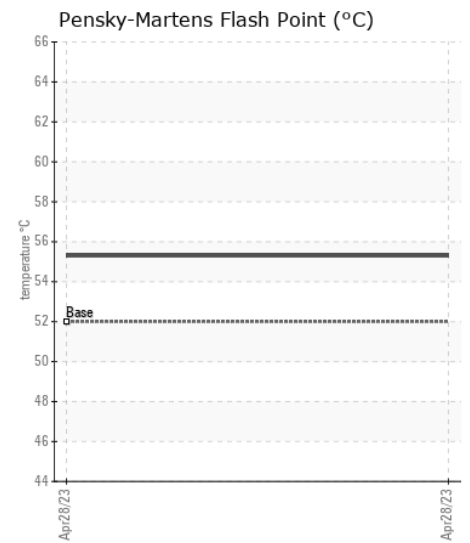
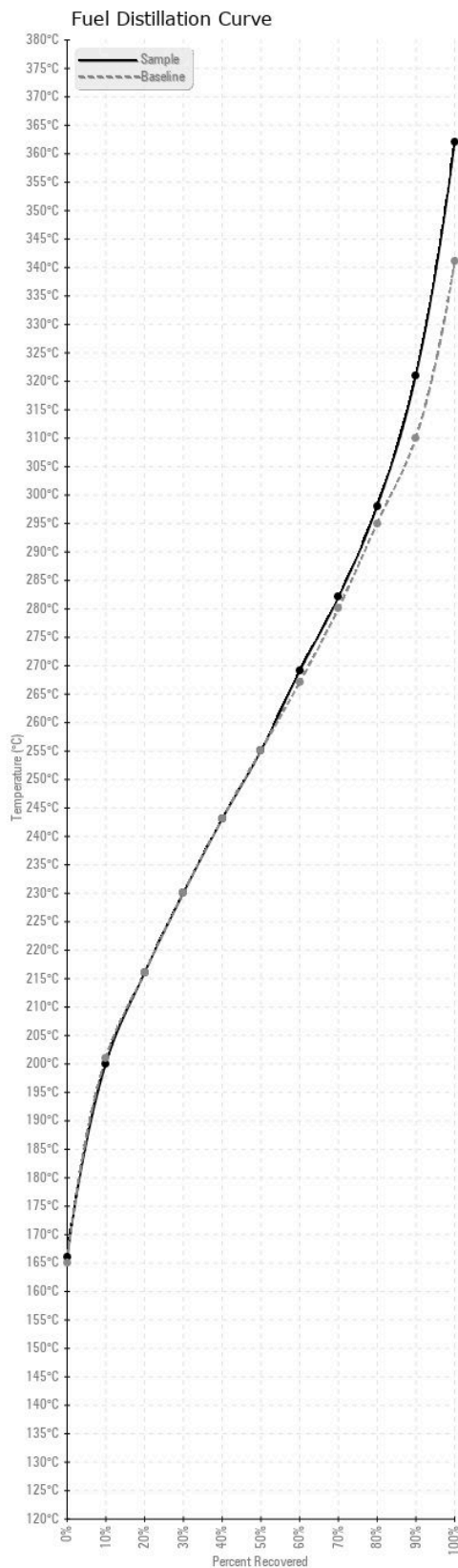
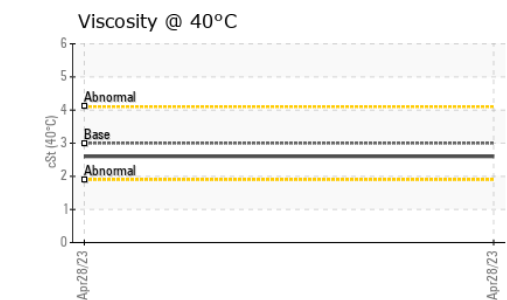
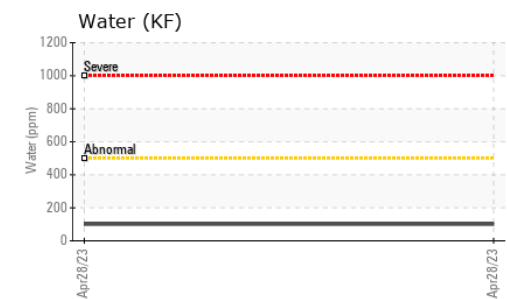
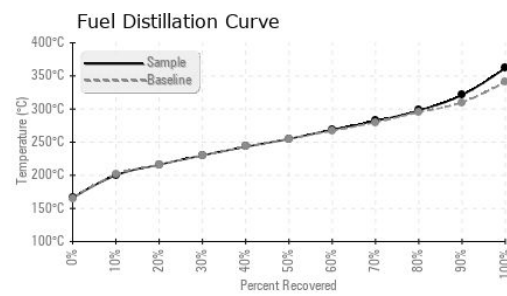
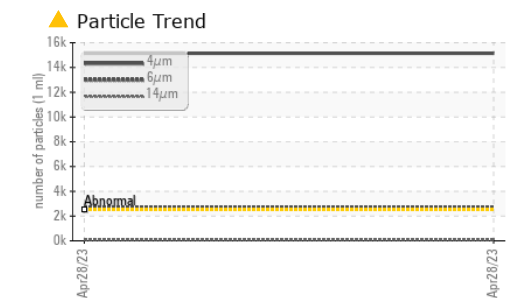
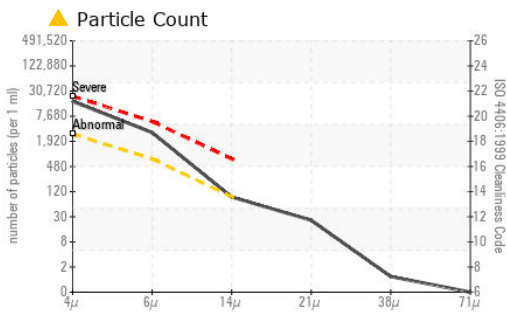
CONTAMINANTS

There is a moderate amount of silt (particulates < 14 microns in size) present in the fuel. Free water present. There is no bacteria or fungus (yeast and/or mold) present in the sample.

FUEL CONDITION

The fuel is still serviceable provided that the contaminant(s) can be reduced to acceptable levels.

Test	UOM	Method	Limit/Abn	Current	History1	History2
Sample Number		Client Info		CU0020215	---	---
Sample Date		Client Info		28 Apr 2023	---	---
Machine Age	hrs	Client Info		42	---	---
Sample Status				ABNORMAL	---	---
Aluminum	ppm	ASTM D5185(m)	<0.1	0	---	---
Nickel	ppm	ASTM D5185(m)	<0.1	0	---	---
Lead	ppm	ASTM D5185(m)	<0.1	0	---	---
Vanadium	ppm	ASTM D5185(m)	<0.1	0	---	---
Iron	ppm	ASTM D5185(m)	<0.1	<1	---	---
Silicon	ppm	ASTM D5185(m)	<1.0	0	---	---
Sodium	ppm	ASTM D5185(m)	<0.1	<1	---	---
Potassium	ppm	ASTM D5185(m)	<0.1	0	---	---
Water	%	ASTM D6304*	<0.05	0.010	---	---
ppm Water	ppm	ASTM D6304*	<500	100.8	---	---
Particles >4µm		ASTM D7647	>2500	▲ 15142	---	---
Particles >6µm		ASTM D7647	>640	▲ 2725	---	---
Particles >14µm		ASTM D7647	>80	79	---	---
Particles >21µm		ASTM D7647	>20	22	---	---
Particles >38µm		ASTM D7647	>4	1	---	---
Particles >71µm		ASTM D7647	>3	0	---	---
Oil Cleanliness		ISO 4406 (c)	>18/16/13	▲ 21/19/13	---	---
Bacteria	CFU/ml	ASTM D6469*	≥100000	0	---	---
Yeast	CFU/ml	ASTM D6469*	≥100000	0	---	---
Mold	Colonies	ASTM D6469*	MODER	NONE	---	---
Calcium	ppm	ASTM D5185(m)	<0.1	<1	---	---
Magnesium	ppm	ASTM D5185(m)	<0.1	0	---	---
Phosphorus	ppm	ASTM D5185(m)	<0.1	<1	---	---
Zinc	ppm	ASTM D5185(m)	<0.1	4	---	---
Specific Gravity		ASTM D1298*	0.839	0.842	---	---
Fuel Color	text	Visual Screen*	Yllow	Orang	---	---
Visc @ 40°C	cSt	ASTM D7279(m)	3.0	2.6	---	---
Pensky-Martens Flash Point	°C	ASTM D7215*	52	55.3	---	---
Sulfur	ppm	ASTM D5185(m)	250	44	---	---
Initial Boiling Point	°C	ASTM D2887*	165	166	---	---
10% Distill Point	°C	ASTM D2887*	201	200	---	---
20% Distill Point	°C	ASTM D2887*	216	216	---	---
30% Distill Point	°C	ASTM D2887*	230	230	---	---
40% Distill Point	°C	ASTM D2887*	243	243	---	---
50% Distill Point	°C	ASTM D2887*	255	255	---	---
60% Distill Point	°C	ASTM D2887*	267	269	---	---
70% Distill Point	°C	ASTM D2887*	280	282	---	---
80% Distill Point	°C	ASTM D2887*	295	298	---	---
90% Distill Point	°C	ASTM D2887*	310	321	---	---
Final Boiling Point	°C	ASTM D2887*	341	362	---	---
API Gravity		ASTM D1298*	37.7	36	---	---
Cetane Index		ASTM D4737*	<40.0	46	---	---



ISO 17025:2017
Accredited
Laboratory

Laboratory : WearCheck - C8-1175 Appleby Line, Burlington, ON L7L 5H9

Sample No. : CU0020215

Lab Number : 02555638

Unique Number : 5568653

Test Package : FUEL (Additional Tests: Bacteria, Bottom, CC Flash, GC-PercFuel, PrtCourt

Received : 04 May 2023

Tested : 08 May 2023

Diagnosed : 08 May 2023 - Kevin Marson

CUMMINS DIESEL

50 SIMMONDS DRIVE

DARTMOUTH, NS

CA B3B 1R3

Contact: Maurice Connolly

maurice.connolly@cummins.com

T: (902)468-7938

F: (902)468-5177

To discuss this sample report, contact Customer Service at 1-800-268-2131.

Test denoted (*) outside scope of accreditation, (m) method modified, (e) tested at external lab.

Validity of results and interpretation are based on the sample and information as supplied.