



OIL ANALYSIS REPORT

WEAR	NORMAL
CONTAMINANTS	NORMAL
OIL CONDITION	NORMAL

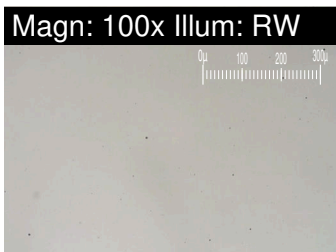
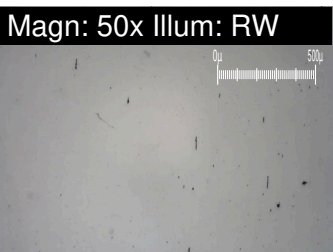
Area  
**ENGINE ROOM FLOOR**  
 Machine Id  
**84-P-6005B AFT FIREWATER PUMP (S/N Maint Plan 22464)**  
 Component  
**Port Diesel Engine**  
 Fluid  
**MOBIL DELVAC 1 5W40 (--- LTR)**

**RECOMMENDATION**

Confirm the source of the lubricant being utilized for top-up/fill.  
 Resample at the next service interval to monitor. Please specify the component make and model with your next sample.

**WEAR**

All component wear rates are normal. The ferrography results are normal indicating no abnormal wear in the system.



Test	UOM	Method	Limit/Abn	Current	History1	History2
Sample Number		Client Info		PP	WC	PP
Sample Date		Client Info		27 Nov 2023	04 Sep 2023	22 Jan 2023
Machine Age	hrs	Client Info		0	0	0
Oil Age	hrs	Client Info		0	0	0
Filter Age	hrs	Client Info		0	0	0
Oil Changed		Client Info		N/A	N/A	N/A
Filter Changed		Client Info		N/A	N/A	N/A
Sample Status				NORMAL	NORMAL	NORMAL
PQ		ASTM D8184*		0	---	---
Iron	ppm	ASTM D5185(m)	>100	1	3	3
Chromium	ppm	ASTM D5185(m)	>20	0	0	0
Nickel	ppm	ASTM D5185(m)	>4	0	0	0
Titanium	ppm	ASTM D5185(m)		0	0	<1
Silver	ppm	ASTM D5185(m)	>3	0	0	0
Aluminum	ppm	ASTM D5185(m)	>20	2	2	2
Lead	ppm	ASTM D5185(m)	>40	0	<1	<1
Copper	ppm	ASTM D5185(m)	>330	<1	2	2
Tin	ppm	ASTM D5185(m)	>15	0	0	<1
Vanadium	ppm	ASTM D5185(m)		0	0	0
Large Particles		DR-Ferr*		2.7	---	---
Small Particles		DR-Ferr*		1.4	---	---
Total Particles		DR-Ferr*	>---	4.1	---	---
Large Particles Percentage	%	DR-Ferr*		31.7	---	---
Severity Index		DR-Ferr*		4	---	---
Ferrous Rubbing	Scale 0-10	ASTM D7684*		1		
Ferrous Sliding	Scale 0-10	ASTM D7684*				
Ferrous Cutting	Scale 0-10	ASTM D7684*				
Ferrous Rolling	Scale 0-10	ASTM D7684*		1		
Ferrous Break-in	Scale 0-10	ASTM D7684*				
Ferrous Spheres	Scale 0-10	ASTM D7684*				
Ferrous Black Oxides	Scale 0-10	ASTM D7684*				
Ferrous Red Oxides	Scale 0-10	ASTM D7684*				
Ferrous Corrosive	Scale 0-10	ASTM D7684*				
Ferrous Other	Scale 0-10	ASTM D7684*				
Nonferrous Rubbing	Scale 0-10	ASTM D7684*				
Nonferrous Sliding	Scale 0-10	ASTM D7684*				
Nonferrous Cutting	Scale 0-10	ASTM D7684*				
Nonferrous Rolling	Scale 0-10	ASTM D7684*				
Nonferrous Other	Scale 0-10	ASTM D7684*				

## CONTAMINANTS

There is no indication of any contamination in the oil.

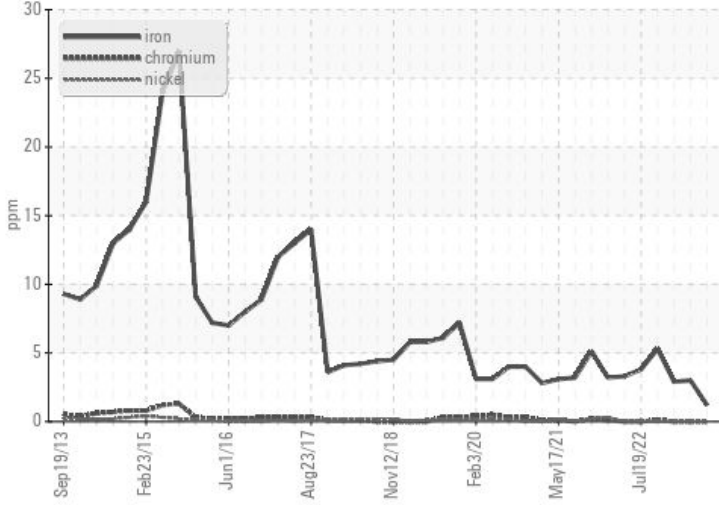
Silicon	ppm	ASTM D5185(m)	>25	<b>5</b>	2	3
Potassium	ppm	ASTM D5185(m)	>20	<b>&lt;1</b>	<1	<1
Fuel		WC Method	>5	<b>&lt;1.0</b>	<1.0	<1.0
Water		WC Method	>0.2	<b>NEG</b>	NEG	NEG
Glycol		WC Method		<b>NEG</b>	NEG	NEG
Soot %	%	ASTM D7844*	>3	<b>0</b>	0	0
Nitration	Abs/cm	ASTM D7624*	>20	<b>6.2</b>	7.2	6.7
Sulfation	Abs/.1mm	ASTM D7415*	>30	<b>26.4</b>	37.3	37.8
Emulsified Water	scalar	Visual*	>0.2	<b>NEG</b>	NEG	NEG
Carbonaceous Material	Scale 0-10	ASTM D7684*				
Sand/Dirt	Scale 0-10	ASTM D7684*				
Fibres	Scale 0-10	ASTM D7684*				
Spheres	Scale 0-10	ASTM D7684*				
Other	Scale 0-10	ASTM D7684*		<b>1</b>		

## OIL CONDITION

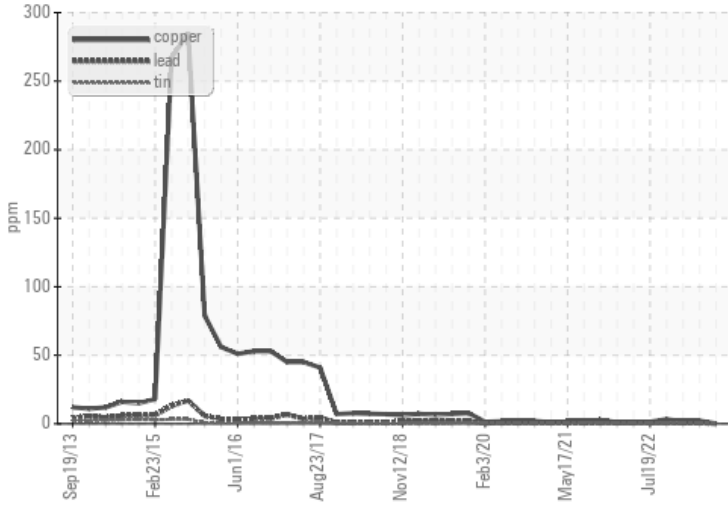
Additive levels indicate the addition of a different brand, or type of oil. The BN result indicates that there is suitable alkalinity remaining in the oil. The condition of the oil is suitable for further service.

Sodium	ppm	ASTM D5185(m)		<b>2</b>	<1	<1
Boron	ppm	ASTM D5185(m)	291	<b>79</b>	110	120
Barium	ppm	ASTM D5185(m)	0.0	<b>0</b>	0	0
Molybdenum	ppm	ASTM D5185(m)	8.0	<b>50</b>	43	46
Manganese	ppm	ASTM D5185(m)		<b>0</b>	<1	<1
Magnesium	ppm	ASTM D5185(m)	624	<b>981</b>	848	875
Calcium	ppm	ASTM D5185(m)	2158	<b>840</b>	909	998
Phosphorus	ppm	ASTM D5185(m)	1132	<b>999</b>	1073	1148
Zinc	ppm	ASTM D5185(m)	1300	<b>1120</b>	1113	1188
Sulfur	ppm	ASTM D5185(m)	3616	<b>2782</b>	2952	2943
Oxidation	Abs/.1mm	ASTM D7414*	>25	<b>26.5</b>	41.4	41.7
Base Number (BN)	mg KOH/g	ASTM D2896*	11.0	<b>10.25</b>	9.62	10.37
Visc @ 100°C	cSt	ASTM D7279(m)	15.0	<b>14.4</b>	13.1	13.2
Lubricant Degradation	Scale 0-10	ASTM D7684*				

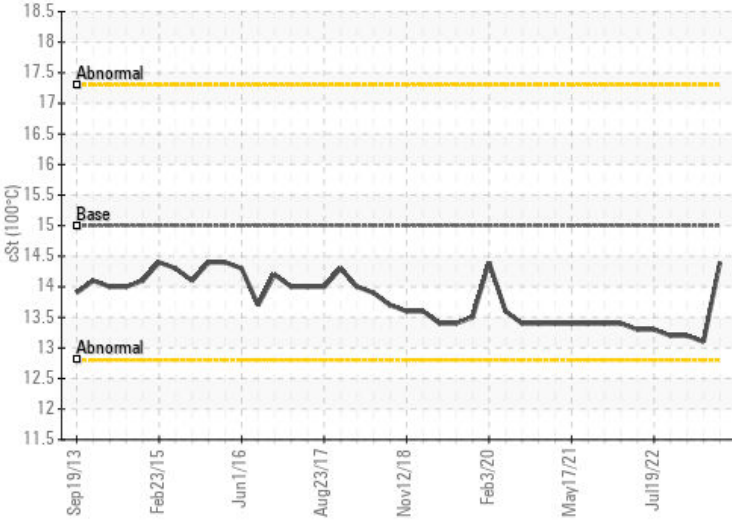
### Ferrous Alloys



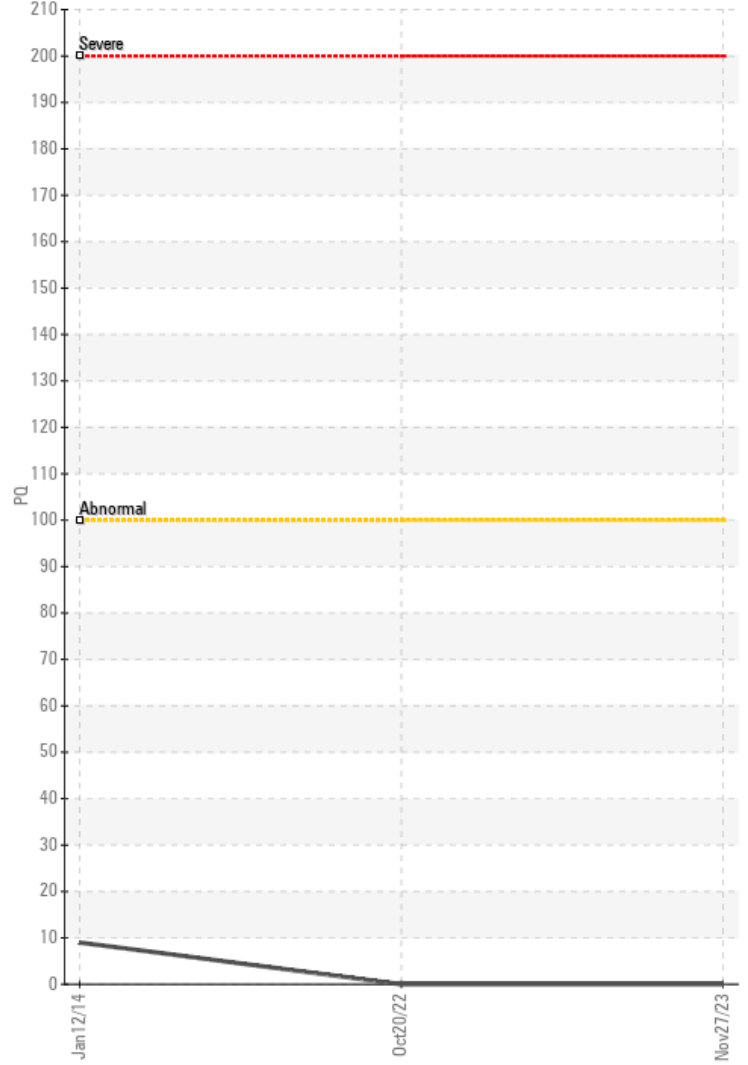
### Non-ferrous Metals



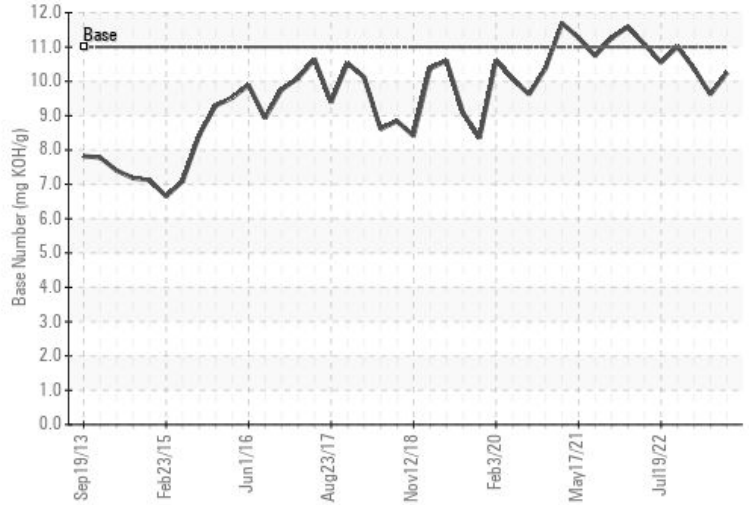
### Viscosity @ 100°C



### PQ



### Base Number



**Laboratory** : WearCheck - C8-1175 Appleby Line, Burlington, ON L7L 5H9 HUSKY SEA ROSE /AKER SOLUTIONS  
**Sample No.** : PP **Received** : 09 Jan 2024  
**Lab Number** : 02607417 **Diagnosed** : 16 Jan 2024  
**Unique Number** : 5708503 **Diagnostician** : Kevin Marson  
**Test Package** : MAR 3

To discuss this sample report, contact Customer Service at 1-800-268-2131.  
 Test denoted (\*) outside scope of accreditation, (m) method modified, (e) tested at external lab.  
 Validity of results and interpretation are based on the sample and information as supplied.

PO BOX 20  
 ST. JOHN'S, NL  
 CA A1C 6C9  
 Contact: Maintenance Supervisor  
 maintsuper.searose@huskyenergy.ca  
 T: x:  
 F: x:

*This page left intentionally blank*