



# FUEL REPORT

CORROSION	NORMAL
CONTAMINANTS	SEVERE
FUEL CONDITION	NORMAL



Machine Id  
**MACK 2073**  
Component  
**Diesel Fuel**  
Fluid  
**No.2 DIESEL FUEL (ULTRALOW SULPHUR) (--- LTR)**

## RECOMMENDATION

We advise that you check all areas where contaminants can enter the system. Laboratory test indicate that this fuel is suitable for use and meets all test requirements. We advise that you perform a filter service, and use off-line filtration to improve the cleanliness of the system fluid. The air breather requires service. If unrated, we recommend that you replace with a suitable micron rated and/or desiccant air breather. If rated, we recommend that you service/replace the breather. We advise that you filter this fluid before use. Resample in 30-45 days to monitor this situation. Please contact your representative for information regarding the proper sampling kits for your service.

## CORROSION

{not applicable}

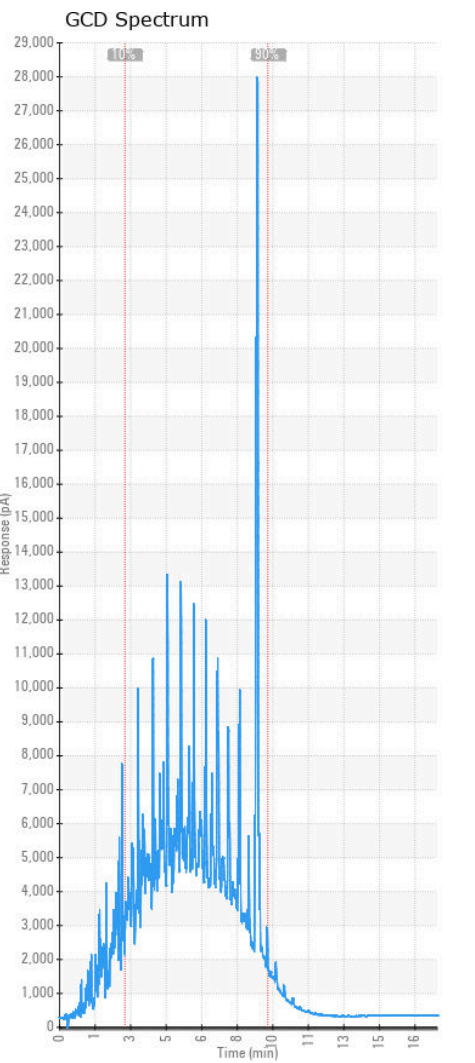
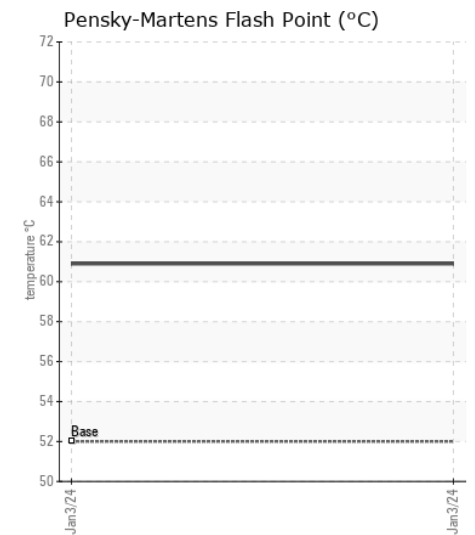
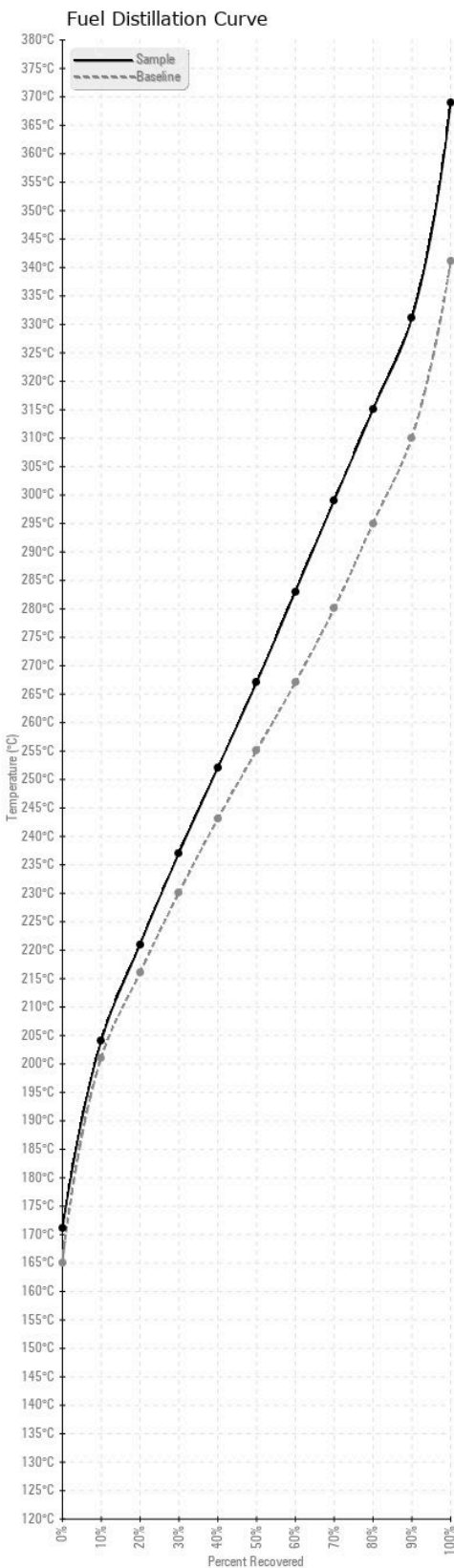
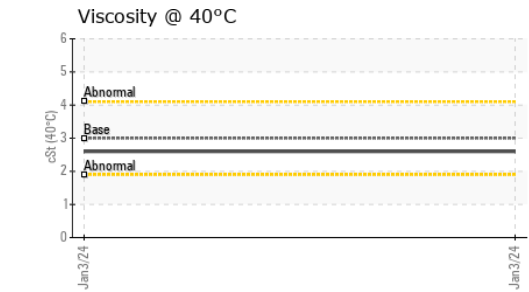
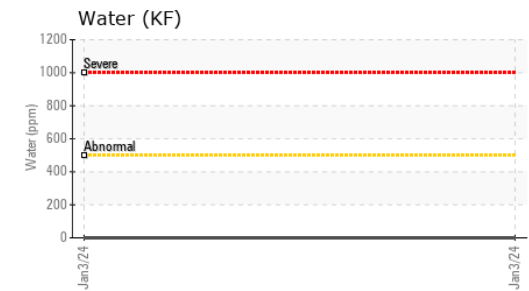
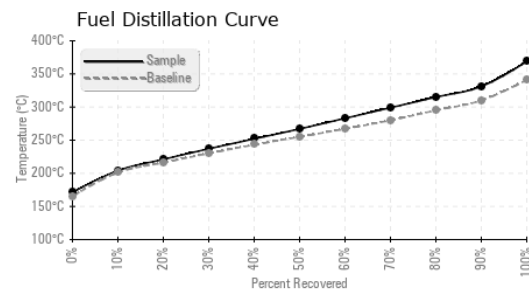
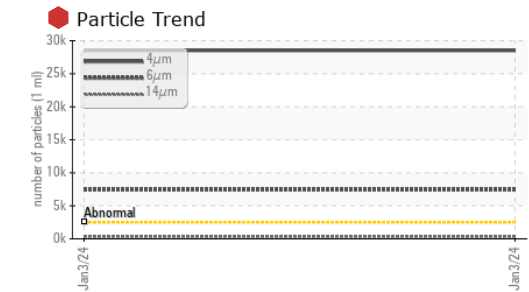
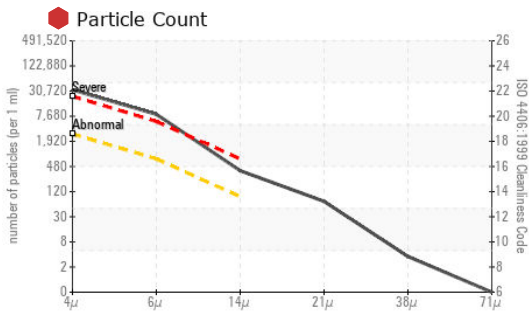
## CONTAMINANTS

There is a high amount of particulates (2 to 100 microns in size) present in the fuel. The water content is negligible.

## FUEL CONDITION

The fuel is still serviceable provided that the contaminant(s) can be reduced to acceptable levels. All laboratory tests indicate that this sample meets specifications for No.2 ultra-low-sulfur diesel fuel (US EPA/CGSB-3.517-3 type B).

Test	UOM	Method	Limit/Abn	Current	History1	History2
Sample Number		Client Info		WC0887222	---	---
Sample Date		Client Info		03 Jan 2024	---	---
Machine Age	kms	Client Info		497000	---	---
Sample Status				SEVERE	---	---
Aluminum	ppm	ASTM D5185(m)	<0.1	0	---	---
Nickel	ppm	ASTM D5185(m)	<0.1	0	---	---
Lead	ppm	ASTM D5185(m)	<0.1	0	---	---
Vanadium	ppm	ASTM D5185(m)	<0.1	0	---	---
Iron	ppm	ASTM D5185(m)	<0.1	0	---	---
Silicon	ppm	ASTM D5185(m)	<1.0	0	---	---
Sodium	ppm	ASTM D5185(m)	<0.1	0	---	---
Potassium	ppm	ASTM D5185(m)	<0.1	<1	---	---
Water	%	ASTM D6304*	<0.05	0.00	---	---
ppm Water	ppm	ASTM D6304*	<500	0	---	---
Particles >4µm		ASTM D7647	>2500	28522	---	---
Particles >6µm		ASTM D7647	>640	7429	---	---
Particles >14µm		ASTM D7647	>80	335	---	---
Particles >21µm		ASTM D7647	>20	62	---	---
Particles >38µm		ASTM D7647	>4	3	---	---
Particles >71µm		ASTM D7647	>3	0	---	---
Oil Cleanliness		ISO 4406 (c)	>18/16/13	22/20/16	---	---
Calcium	ppm	ASTM D5185(m)	<0.1	<1	---	---
Magnesium	ppm	ASTM D5185(m)	<0.1	0	---	---
Phosphorus	ppm	ASTM D5185(m)	<0.1	<1	---	---
Zinc	ppm	ASTM D5185(m)	<0.1	0	---	---
Specific Gravity		ASTM D1298*	0.839	0.841	---	---
Fuel Color	text	Visual Screen*	Yellow	Yellow	---	---
Visc @ 40°C	cSt	ASTM D7279(m)	3.0	2.6	---	---
Pensky-Martens Flash Point	°C	ASTM D7215*	52	60.9	---	---
Sulfur	ppm	ASTM D5185(m)	10	10	---	---
Initial Boiling Point	°C	ASTM D2887*	165	171	---	---
10% Distill Point	°C	ASTM D2887*	201	204	---	---
20% Distill Point	°C	ASTM D2887*	216	221	---	---
30% Distill Point	°C	ASTM D2887*	230	237	---	---
40% Distill Point	°C	ASTM D2887*	243	252	---	---
50% Distill Point	°C	ASTM D2887*	255	267	---	---
60% Distill Point	°C	ASTM D2887*	267	283	---	---
70% Distill Point	°C	ASTM D2887*	280	299	---	---
80% Distill Point	°C	ASTM D2887*	295	315	---	---
90% Distill Point	°C	ASTM D2887*	310	331	---	---
Final Boiling Point	°C	ASTM D2887*	341	369	---	---
API Gravity		ASTM D1298*	37.7	36	---	---
Cetane Index		ASTM D4737*	<40.0	49	---	---



**Laboratory** : WearCheck - C8-1175 Appleby Line, Burlington, ON L7L 5H9 **CORNWALL TRUCK MAINTENANCE**  
**Sample No.** : WC0887222 **Received** : 09 Jan 2024 P.O. BOX 1828, 1930 McCONNEL AVENUE  
**Lab Number** : 02607617 **Diagnosed** : 11 Jan 2024 CORNWALL, ON  
**Unique Number** : 5708703 **Diagnostician** : Kevin Marson CA K6H 6N6  
**Test Package** : MOB 1 ( Additional Tests: API, CC Flash, Cetane, Fuel, GC-PercFuel, GCD, KF, PftCount ) **Contact:** CTM SERVICE

To discuss this sample report, contact Customer Service at 1-800-268-2131. **Service@CTMVOLVO.com**  
 Test denoted (\*) outside scope of accreditation, (m) method modified, (e) tested at external lab. **T: (613)936-1585**  
 Validity of results and interpretation are based on the sample and information as supplied. **F: (613)936-2149**