



COOLANT REPORT

CORROSION	ABNORMAL
CONTAMINANTS	NORMAL
COOLANT CONDITION	NORMAL

Area
[8965]
 Machine Id
#1
 Component
Coolant

Fluid
CONVENTIONAL COOLANT (--- GAL)

RECOMMENDATION

We recommend drain system, and refill with 50/50 antifreeze water mixture. We advise that you replenish the supplemental coolant additives (SCAs) and add per manufacturer's specifications. We recommend an early resample to monitor this condition.

Test	UOM	Method	Limit/Abn	Current	History1	History2
Sample Number		Client Info		WC0829349	WC0866277	WC0829348
Sample Date		Client Info		15 Jan 2024	20 Oct 2023	25 Sep 2023
Machine Age	hrs	Client Info		0	0	1802
Oil Age	hrs	Client Info		0	0	0
Oil Changed		Client Info		N/A	N/A	N/A
Sample Status				ABNORMAL	ABNORMAL	NORMAL

CORROSION

Copper ppm levels are severe. Lead ppm levels are abnormal. The high metal levels indicate corrosion in the system.

Iron	ppm	ASTM D5185(m)	>15	0	0	0
Aluminum	ppm	ASTM D5185(m)	>10	0	<1	0
Copper	ppm	ASTM D5185(m)	>10	▲ 14	▲ 15	2
Lead	ppm	ASTM D5185(m)	>10	▲ 11	▲ 11	5
Tin	ppm	ASTM D5185(m)	>10	0	0	0
Silver	ppm	ASTM D5185(m)	>10	<1	<1	<1
Zinc	ppm	ASTM D5185(m)	>10	3	5	0

CONTAMINANTS

There is no indication of any contamination in the coolant.

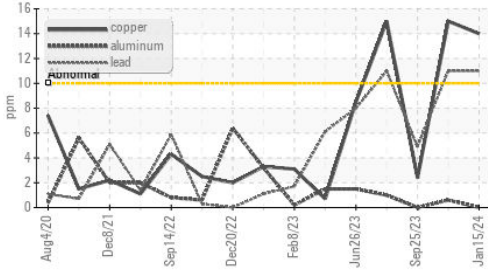
Calcium	ppm	ASTM D5185(m)	>100	3	1	3
Magnesium	ppm	ASTM D5185(m)	>40	<1	1	<1
Appearance	scalar	Visual*	NORML	NORML	NORML	NORML
Odor	scalar	Visual*	NORML	NORML	NORML	NORML
Coolant Appearance		Visual*	Clear	Clear	Clear	Clear

COOLANT CONDITION

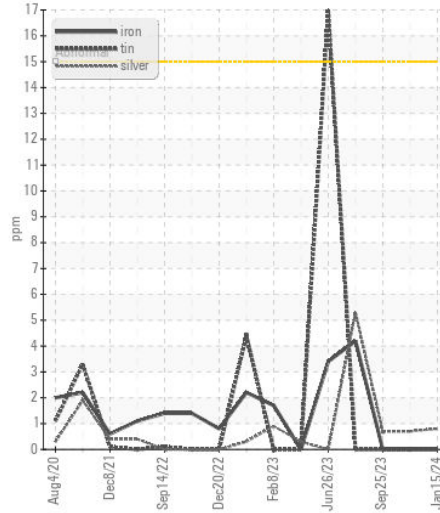
The nitrite level is acceptable. The pH level of this fluid is within the acceptable limits.

Specific Gravity		ASTM D1298*		1.067	1.068	1.066
pH	Scale 0-14	ASTM D1287*	9.5	9.26	9.21	9.08
Nitrites	ppm	Alcan Test Kit*	1500	840	1320	1520
Reserve Alkalinity	Scale 0-20	ASTM D1121*	8.5	4.2	4.5	3.4
Percentage Glycol	%	ASTM D3321*	50	50.0	50.3	48.9
Freezing Point	°C	ASTM D3321*	-40	-35	-35	-31
Carboxylate				---	---	---
Silicon	ppm	ASTM D5185(m)		9	10	24
Phosphorus	ppm	ASTM D5185(m)		8	9	11
Boron	ppm	ASTM D5185(m)		114	125	228
Molybdenum	ppm	ASTM D5185(m)		<1	13	12
Sodium	ppm	ASTM D5185(m)		1562	2001	2451
Potassium	ppm	ASTM D5185(m)		2422	3536	618
Coolant Color		Visual*	Green	Green	Green	Red

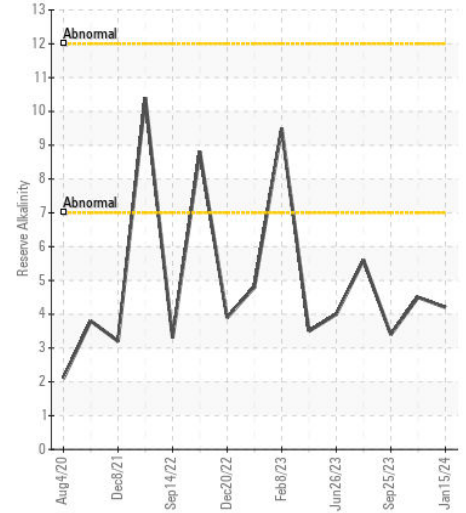
▲ Copper/Aluminum/Lead



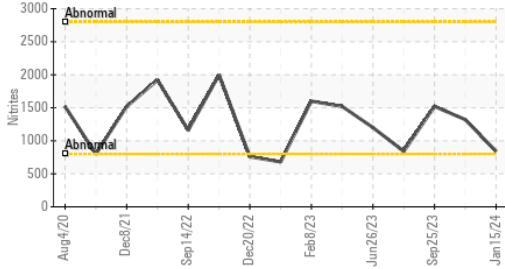
Iron/Tin/Silver



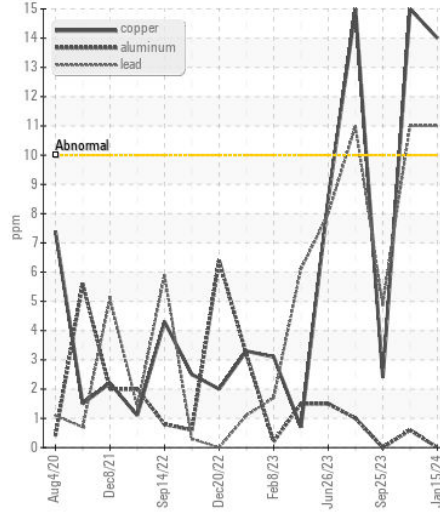
Reserve Alkalinity



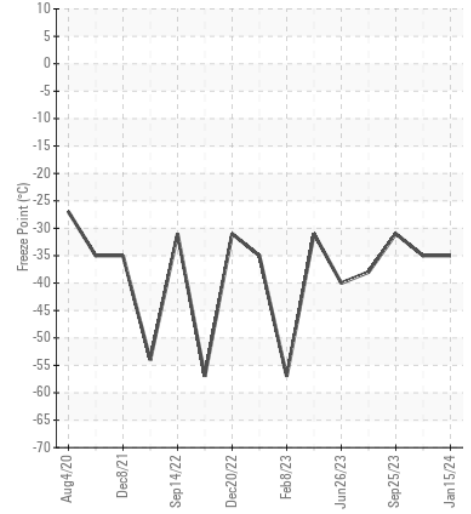
Nitrites



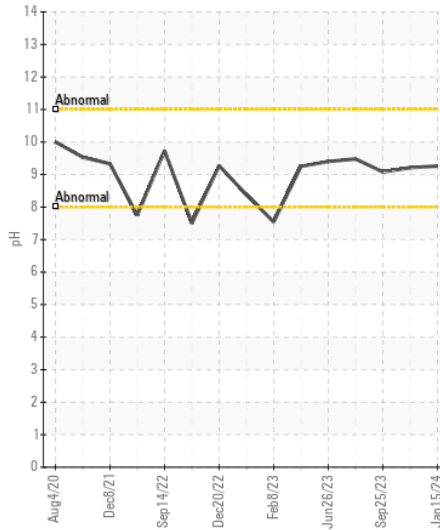
▲ Copper/Aluminum/Lead



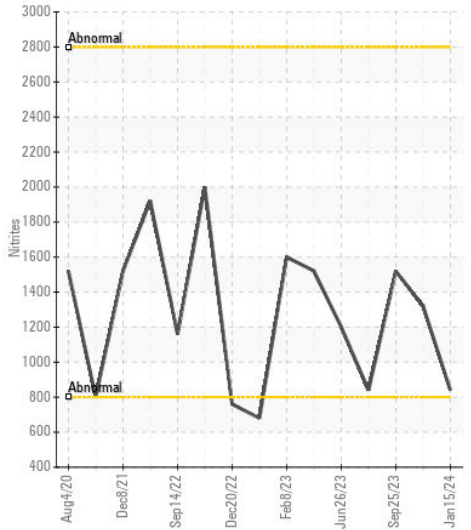
Freeze Point



pH



Nitrites



Laboratory : WearCheck - C8-1175 Appleby Line, Burlington, ON L7L 5H9
Sample No. : WC0829349 **Received** : 17 Jan 2024
Lab Number : 02609544 **Diagnosed** : 19 Jan 2024
Unique Number : 5710630 **Diagnostician** : Kevin Marson
Test Package : COOL

GENSERVE LTD.
 562 VICTORIA ST.
 PORT PERRY, ON
 CA L9L 1R7
 Contact: Raymond Robert
 raymond@genserve.ca
 T: (416)729-0355
 F: x:

To discuss this sample report, contact Customer Service at 1-800-268-2131.
 Test denoted (*) outside scope of accreditation, (m) method modified, (e) tested at external lab.
 Validity of results and interpretation are based on the sample and information as supplied.