



FUEL REPORT

CORROSION	NORMAL
CONTAMINANTS	ABNORMAL
FUEL CONDITION	ABNORMAL

Area

[366404]

Machine Id

CP1901

Component

Diesel Fuel

Fluid

No.2 DIESEL FUEL (ULTRALOW SULPHUR) (--- GAL)

RECOMMENDATION

Check with fluid supplier for the availability of biocides to control the microorganisms in the system. We advise that you filter this fluid before use. We recommend you service the filters on this component. Recommend resampling in 10 days. We recommend an early resample to monitor this condition.

CORROSION

{not applicable}

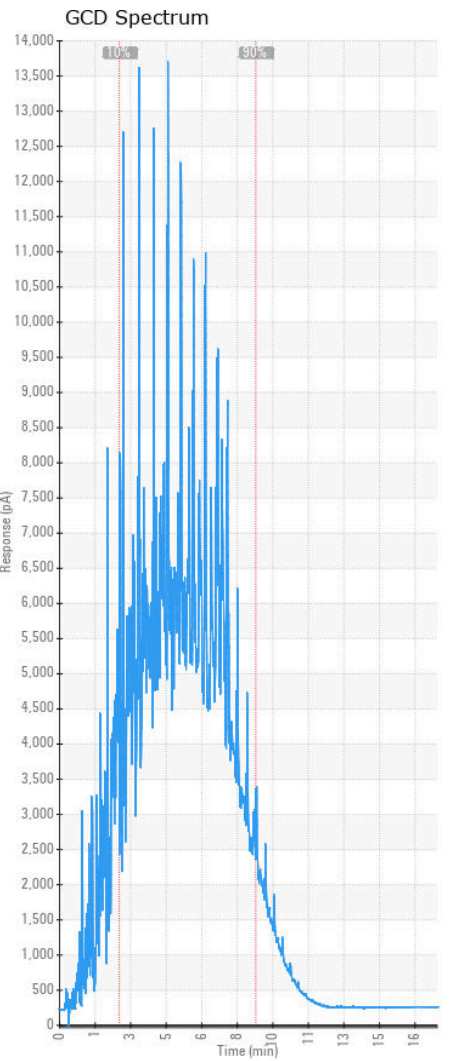
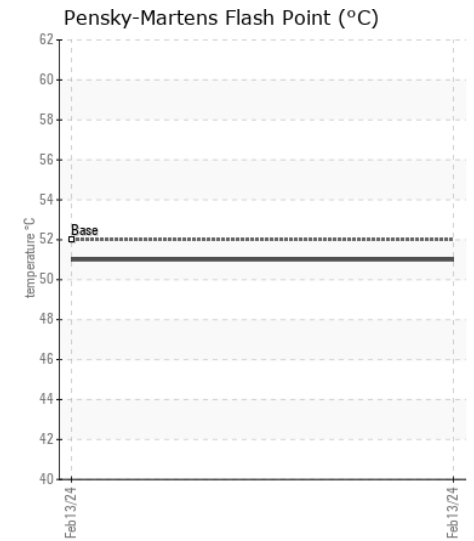
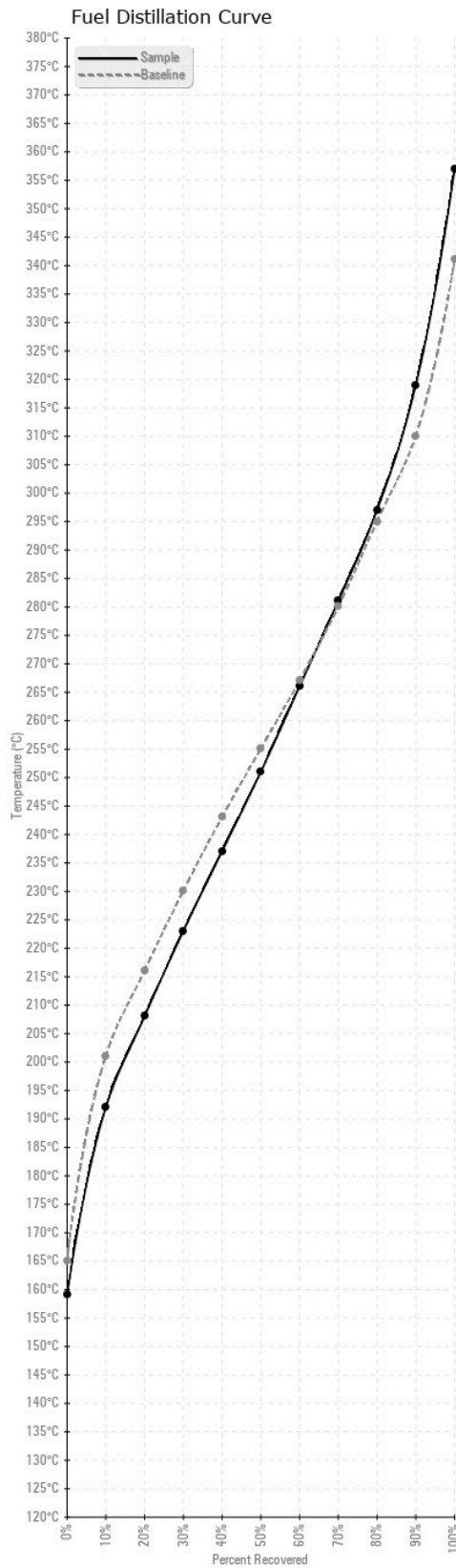
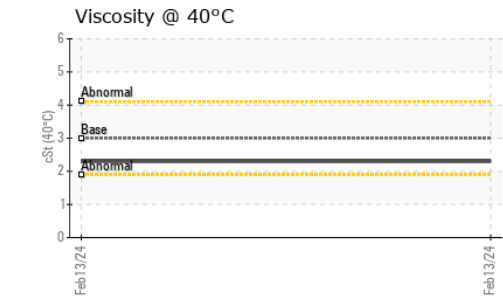
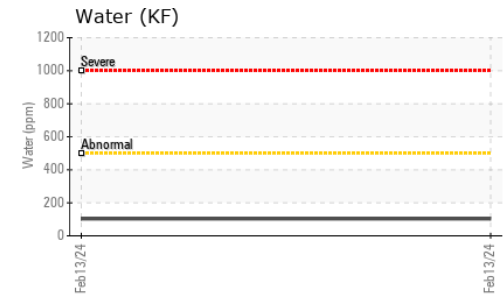
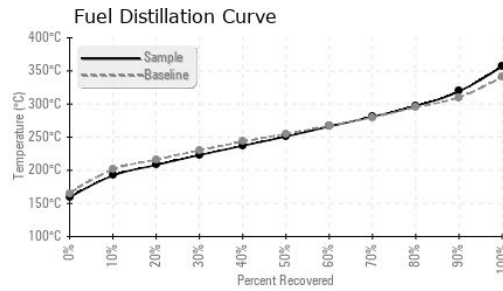
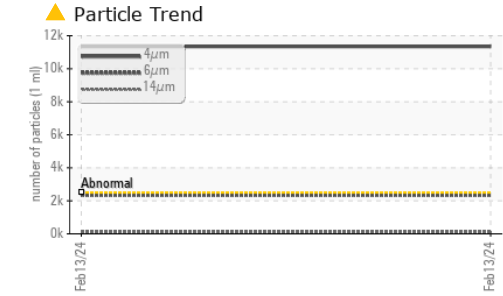
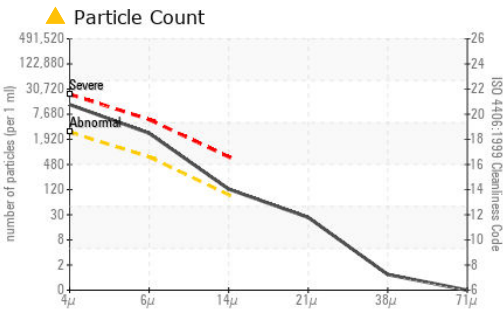
CONTAMINANTS

There is a moderate amount of silt (particulates < 14 microns in size) present in the fuel. There is no bacteria or fungus (yeast and/or mold) present in the sample. The water content is negligible. Small amount of bacteria present. Small amount of yeast present. Elevated mold counts.

FUEL CONDITION

The fuel is still serviceable provided that the contaminant(s) can be reduced to acceptable levels.

Test	UOM	Method	Limit/Abn	Current	History1	History2
Sample Number		Client Info		WC0886639	---	---
Sample Date		Client Info		13 Feb 2024	---	---
Machine Age	hrs	Client Info		0	---	---
Sample Status				ABNORMAL	---	---
Aluminum	ppm	ASTM D5185(m)	<0.1	0	---	---
Nickel	ppm	ASTM D5185(m)	<0.1	0	---	---
Lead	ppm	ASTM D5185(m)	<0.1	0	---	---
Vanadium	ppm	ASTM D5185(m)	<0.1	0	---	---
Iron	ppm	ASTM D5185(m)	<0.1	0	---	---
Silicon	ppm	ASTM D5185(m)	<1.0	0	---	---
Sodium	ppm	ASTM D5185(m)	<0.1	0	---	---
Potassium	ppm	ASTM D5185(m)	<0.1	0	---	---
Water	%	ASTM D6304*	<0.05	0.010	---	---
ppm Water	ppm	ASTM D6304*	<500	103	---	---
Particles >4µm		ASTM D7647	>2500	▲ 11343	---	---
Particles >6µm		ASTM D7647	>640	▲ 2349	---	---
Particles >14µm		ASTM D7647	>80	▲ 109	---	---
Particles >21µm		ASTM D7647	>20	23	---	---
Particles >38µm		ASTM D7647	>4	1	---	---
Particles >71µm		ASTM D7647	>3	0	---	---
Oil Cleanliness		ISO 4406 (c)	>18/16/13	▲ 21/18/14	---	---
Bacteria	CFU/ml	ASTM D6469*	>=100000	▲ 10000	---	---
Yeast	CFU/ml	ASTM D6469*	>=100000	1000	---	---
Mold	Colonies	ASTM D6469*	MODER	▲ MODER	---	---
Calcium	ppm	ASTM D5185(m)	<0.1	0	---	---
Magnesium	ppm	ASTM D5185(m)	<0.1	0	---	---
Phosphorus	ppm	ASTM D5185(m)	<0.1	<1	---	---
Zinc	ppm	ASTM D5185(m)	<0.1	0	---	---
Specific Gravity		ASTM D1298*	0.839	0.831	---	---
Fuel Color	text	Visual Screen*	Yllow	Yllow	---	---
Visc @ 40°C	cSt	ASTM D7279(m)	3.0	2.3	---	---
Pensky-Martens Flash Point	°C	ASTM D7215*	52	51	---	---
Sulfur	ppm	ASTM D5185(m)	10	9	---	---
Initial Boiling Point	°C	ASTM D2887*	165	159	---	---
10% Distill Point	°C	ASTM D2887*	201	192	---	---
20% Distill Point	°C	ASTM D2887*	216	208	---	---
30% Distill Point	°C	ASTM D2887*	230	223	---	---
40% Distill Point	°C	ASTM D2887*	243	237	---	---
50% Distill Point	°C	ASTM D2887*	255	251	---	---
60% Distill Point	°C	ASTM D2887*	267	266	---	---
70% Distill Point	°C	ASTM D2887*	280	281	---	---
80% Distill Point	°C	ASTM D2887*	295	297	---	---
90% Distill Point	°C	ASTM D2887*	310	319	---	---
Final Boiling Point	°C	ASTM D2887*	341	357	---	---
API Gravity		ASTM D1298*	37.7	38	---	---
Cetane Index		ASTM D4737*	<40.0	49	---	---



ISO 17025:2017
Accredited
Laboratory

Laboratory : WearCheck - C8-1175 Appleby Line, Burlington, ON L7L 5H9
Sample No. : WC0886639
Lab Number : 02616100
Unique Number : 5733210
Test Package : FUEL (Additional Tests: Bacteria, Bottom, CC Flash, GC-PercFuel, PrtCount

Received : 15 Feb 2024
Tested : 20 Feb 2024
Diagnosed : 21 Feb 2024 - Kevin Marson

SURGENOR TRUCK
 1571 LIVERPOOL COURT
 OTTAWA, ON
 CA K1B 4L1

Contact: Clinton Stevens
 clinton.stevens@surgenor.com

T: (613)745-0024
 F: (613)745-8690

To discuss this sample report, contact Customer Service at 1-800-268-2131.
 Test denoted (*) outside scope of accreditation, (m) method modified, (e) tested at external lab.
 Validity of results and interpretation are based on the sample and information as supplied.