



FUEL REPORT

CORROSION	NORMAL
CONTAMINANTS	ATTENTION
FUEL CONDITION	ABNORMAL

Machine Id
JCB 9404T4 (S/N JCB94004LP3284170)
 Component
Diesel Fuel
 Fluid
No.2 DIESEL FUEL (LOW-SULPHUR) (--- GAL)

RECOMMENDATION

We advise that you filter this fluid before use. We recommend you service the filters on this component. Resample at the next service interval to monitor.

Test	UOM	Method	Limit/Abn	Current	History1	History2
Sample Number		Client Info		JCB	---	---
Sample Date		Client Info		08 Feb 2024	---	---
Machine Age	hrs	Client Info		35	---	---
Sample Status				ABNORMAL	---	---

CORROSION

{not applicable}

Aluminum	ppm	ASTM D5185(m)	<0.1	0	---	---
Nickel	ppm	ASTM D5185(m)	<0.1	0	---	---
Lead	ppm	ASTM D5185(m)	<0.1	0	---	---
Vanadium	ppm	ASTM D5185(m)	<0.1	0	---	---
Iron	ppm	ASTM D5185(m)	<0.1	0	---	---

CONTAMINANTS

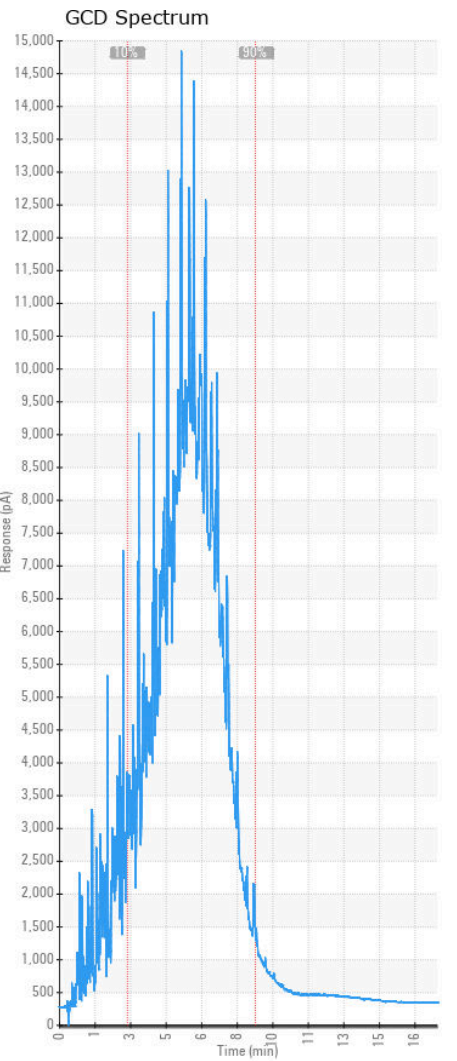
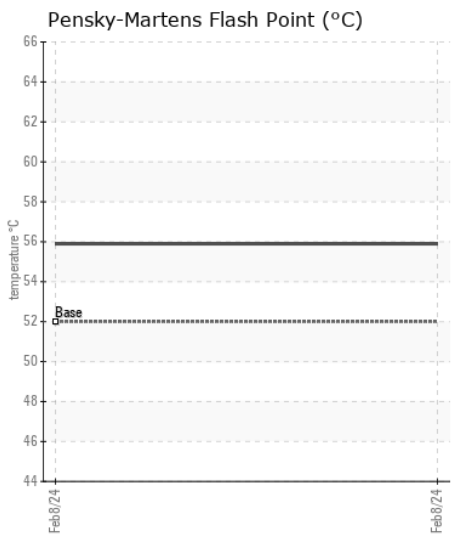
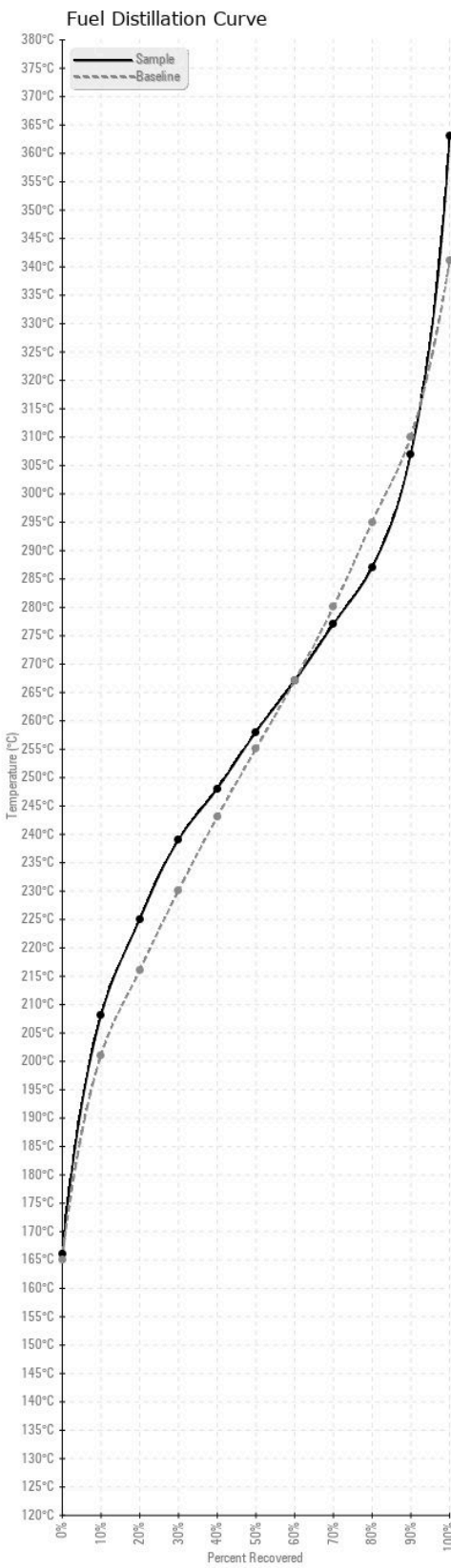
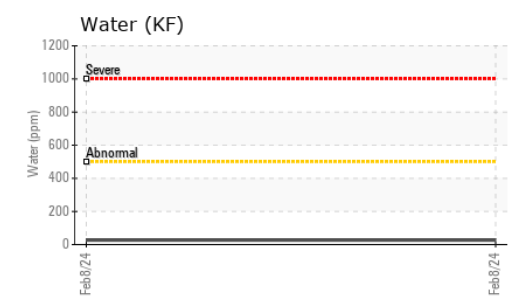
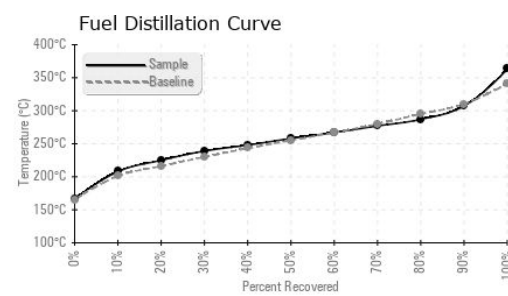
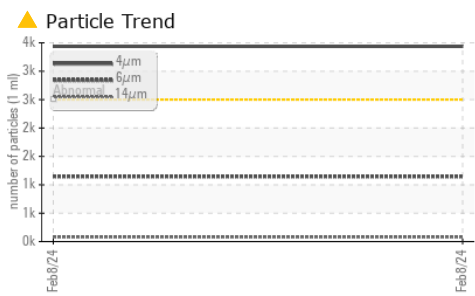
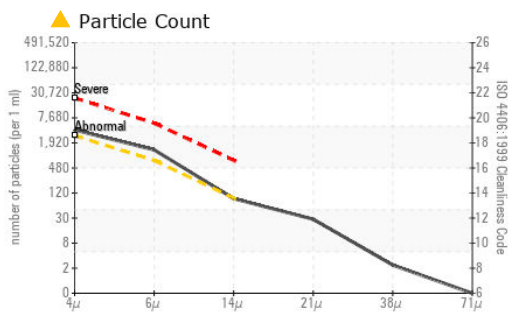
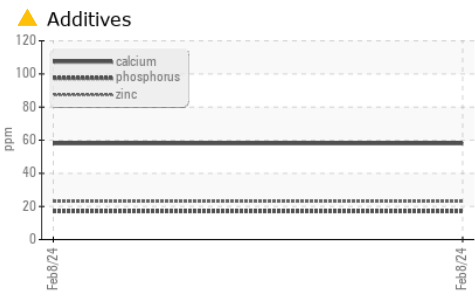
There is a light amount of silt (particulates < 14 microns in size) present in the fuel. The water content is negligible.

Silicon	ppm	ASTM D5185(m)	<1.0	<1	---	---
Sodium	ppm	ASTM D5185(m)	<0.1	<1	---	---
Potassium	ppm	ASTM D5185(m)	<0.1	0	---	---
Water	%	ASTM D6304*	<0.05	0.003	---	---
ppm Water	ppm	ASTM D6304*	<500	27	---	---
Particles >4µm		ASTM D7647	>2500	▲ 3438	---	---
Particles >6µm		ASTM D7647	>640	▲ 1146	---	---
Particles >14µm		ASTM D7647	>80	78	---	---
Particles >21µm		ASTM D7647	>20	25	---	---
Particles >38µm		ASTM D7647	>4	2	---	---
Particles >71µm		ASTM D7647	>3	0	---	---
Oil Cleanliness		ISO 4406 (c)	>18/16/13	▲ 19/17/13	---	---
Calcium	ppm	ASTM D5185(m)	<0.1	▲ 58	---	---
Magnesium	ppm	ASTM D5185(m)	<0.1	<1	---	---
Phosphorus	ppm	ASTM D5185(m)	<0.1	▲ 17	---	---
Zinc	ppm	ASTM D5185(m)	<0.1	▲ 23	---	---

FUEL CONDITION

Additive levels indicate the addition of a different brand, or type of fluid. The fuel is no longer serviceable due to the presence of contaminants.

Specific Gravity		ASTM D1298*	0.839	0.842	---	---
Fuel Color	text	Visual Screen*	Yellow	Pink	---	---
Visc @ 40°C	cSt	ASTM D7279(m)	3.0	2.7	---	---
Pensky-Martens Flash Point	°C	ASTM D7215*	52	55.9	---	---
Sulfur	ppm	ASTM D5185(m)	250	60	---	---
Initial Boiling Point	°C	ASTM D2887*	165	166	---	---
10% Distill Point	°C	ASTM D2887*	201	208	---	---
20% Distill Point	°C	ASTM D2887*	216	225	---	---
30% Distill Point	°C	ASTM D2887*	230	239	---	---
40% Distill Point	°C	ASTM D2887*	243	248	---	---
50% Distill Point	°C	ASTM D2887*	255	258	---	---
60% Distill Point	°C	ASTM D2887*	267	267	---	---
70% Distill Point	°C	ASTM D2887*	280	277	---	---
80% Distill Point	°C	ASTM D2887*	295	287	---	---
90% Distill Point	°C	ASTM D2887*	310	307	---	---
Final Boiling Point	°C	ASTM D2887*	341	363	---	---
API Gravity		ASTM D1298*	37.7	36	---	---
Cetane Index		ASTM D4737*	<40.0	47	---	---



Laboratory : WearCheck - C8-1175 Appleby Line, Burlington, ON L7L 5H9
Sample No. : JCB
Lab Number : 02616104
Unique Number : 5733214
Test Package : FUEL (Additional Tests: CC Flash, GC-PercFuel, PrtCount)

WESTCON EQUIPMENT & RENTALS LTD
 380 KEEWATIN STREET
 WINNIPEG, MB
 CA R2X 2R9
 Contact: Terry Tanner
 ttanner@westconequip.ca
 T: (204)791-9310
 F: (204)633-5805

To discuss this sample report, contact Customer Service at 1-800-268-2131.
 Test denoted (*) outside scope of accreditation, (m) method modified, (e) tested at external lab.
 Validity of results and interpretation are based on the sample and information as supplied.