



Machine Id  
**101016**

Component  
**Coolant**

Fluid  
**EXTENDED LIFE COOLANT (--- GAL)**

**RECOMMENDATION**

We recommend that you drain the system and refill with a 50/50 long-life coolant/water mixture. We recommend an early resample to monitor this condition.

Test	UOM	Method	Limit/Abn	Current	History1	History2
Sample Number		Client Info		<b>GFL0108240</b>	---	---
Sample Date		Client Info		<b>15 Feb 2024</b>	---	---
Machine Age	hrs	Client Info		<b>0</b>	---	---
Oil Age	hrs	Client Info		<b>0</b>	---	---
Oil Changed		Client Info		<b>N/A</b>	---	---
Sample Status				<b>SEVERE</b>	---	---

**CORROSION**

Aluminum ppm levels are severe. Iron ppm levels are abnormal. The iron level is high indicating rust in the system which clogs the cooling system. The high metal levels indicate corrosion in the system.

Iron	ppm	ASTM D5185(m)	>15	<b>▲ 66</b>	---	---
Aluminum	ppm	ASTM D5185(m)	>10	<b>◆ 142</b>	---	---
Copper	ppm	ASTM D5185(m)	>10	<b>&lt;1</b>	---	---
Lead	ppm	ASTM D5185(m)	>10	<b>0</b>	---	---
Tin	ppm	ASTM D5185(m)	>10	<b>0</b>	---	---
Silver	ppm	ASTM D5185(m)	>10	<b>&lt;1</b>	---	---
Zinc	ppm	ASTM D5185(m)	>10	<b>10</b>	---	---

**CONTAMINANTS**

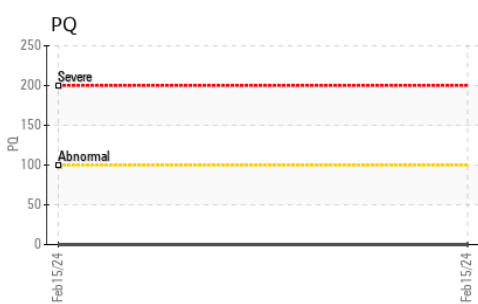
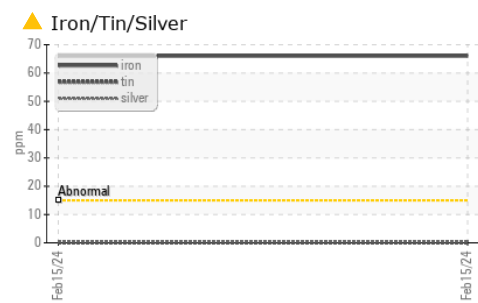
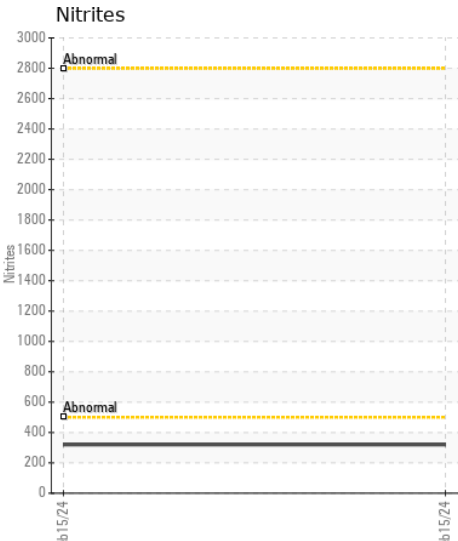
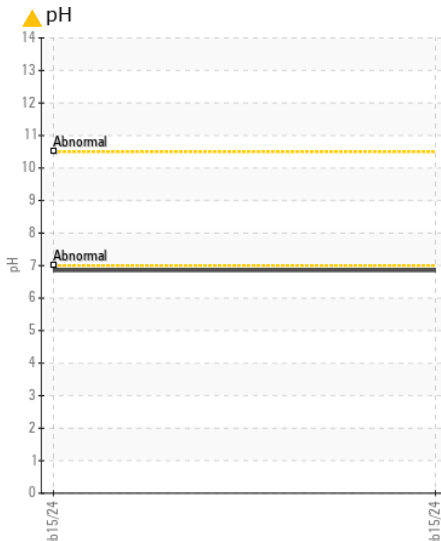
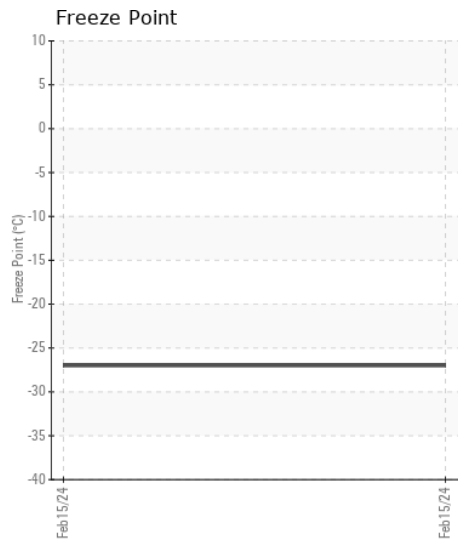
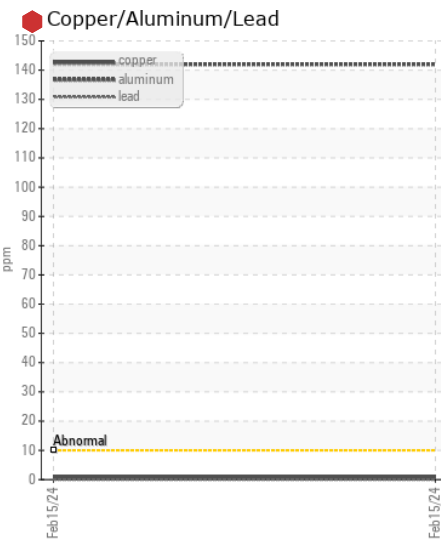
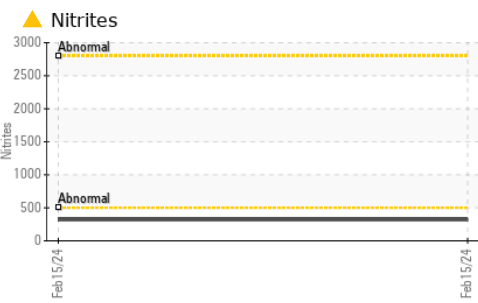
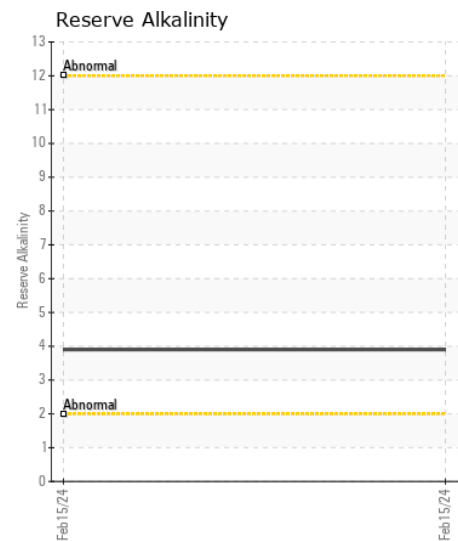
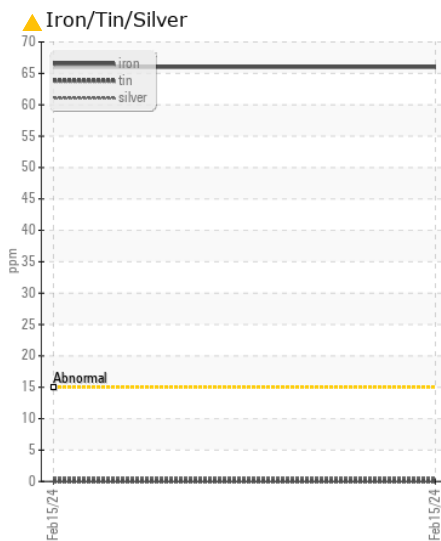
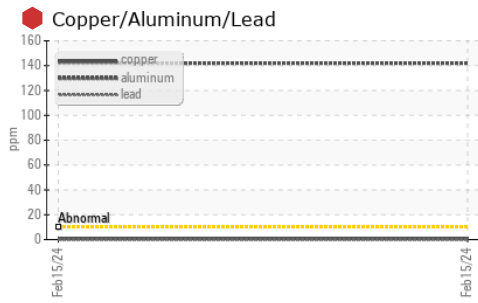
There is no indication of any contamination in the component(unconfirmed).

Calcium	ppm	ASTM D5185(m)	>100	<b>29</b>	---	---
Magnesium	ppm	ASTM D5185(m)	>40	<b>8</b>	---	---
Appearance	scalar	Visual*	NORML	<b>NORML</b>	---	---
Odor	scalar	Visual*	NORML	<b>NORML</b>	---	---
Coolant Appearance		Visual*	Clear	<b>▲ Opaque</b>	---	---

**COOLANT CONDITION**

The coolant is cloudy indicating either an overconcentration of coolant additives, or a mixing of incompatible coolant technologies. The pH is low which causes rust formation. The reserve alkalinity of this fluid is acceptable.

Specific Gravity		ASTM D1298*		<b>1.057</b>	---	---
pH	Scale 0-14	ASTM D1287*	9.0	<b>▲ 6.85</b>	---	---
Nitrites	ppm	Alcan Test Kit*		<b>320</b>	---	---
Reserve Alkalinity	Scale 0-20	ASTM D1121*		<b>3.9</b>	---	---
Percentage Glycol	%	ASTM D3321*	50	<b>42.4</b>	---	---
Freezing Point	°C	ASTM D3321*	-40	<b>-27</b>	---	---
Carboxylate				<b>---</b>	---	---
Silicon	ppm	ASTM D5185(m)		<b>77</b>	---	---
Phosphorus	ppm	ASTM D5185(m)		<b>36</b>	---	---
Boron	ppm	ASTM D5185(m)		<b>6</b>	---	---
Molybdenum	ppm	ASTM D5185(m)		<b>166</b>	---	---
Sodium	ppm	ASTM D5185(m)		<b>7145</b>	---	---
Potassium	ppm	ASTM D5185(m)		<b>978</b>	---	---
Coolant Color		Visual*	Orange/R	<b>Red</b>	---	---



**Laboratory** : WearCheck - C8-1175 Appleby Line, Burlington, ON L7L 5H9  
**Sample No.** : GFL0108240  
**Lab Number** : 02616475  
**Unique Number** : 5733585  
**Test Package** : COOL ( Additional Tests: GlycolType, PQ )

**GFL Environmental - 355 - Saskatoon**  
 100 Cory Road  
 Saskatoon, SK  
 CA S7K 3J7  
 Contact: Ryan Polichuk  
 rpolichuk@gflenv.com  
 T: (306)244-9500  
 F:

To discuss this sample report, contact Customer Service at 1-800-268-2131.  
 Test denoted (\*) outside scope of accreditation, (m) method modified, (e) tested at external lab.  
 Validity of results and interpretation are based on the sample and information as supplied.