



POWER SYSTEMS
SYSTÈMES DE PUISSANCE

FUEL REPORT

CORROSION	NORMAL
CONTAMINANTS	NORMAL
FUEL CONDITION	NORMAL

Machine Id
5272012153

Component
Diesel Fuel

Fluid
No.1 DIESEL FUEL (ULTRALOW SULPHUR) (--- GAL)

RECOMMENDATION

Les tests de laboratoire indiquent que ce carburant peut être utilisé et qu'il répond à toutes les exigences. Échantillonner de nouveau l'équipement au prochain intervalle de vidange afin d'en surveiller la condition.

Test	UOM	Method	Limit/Abn	Current	History1	History2
Sample Number		Client Info		WA0021135	---	---
Sample Date		Client Info		11 Feb 2024	---	---
Machine Age	hrs	Client Info		0	---	---
Sample Status				NORMAL	---	---

CORROSION

{sans objet}

Aluminum	ppm	ASTM D5185(m)	<0.1	0	---	---
Nickel	ppm	ASTM D5185(m)	<0.1	0	---	---
Lead	ppm	ASTM D5185(m)	<0.1	0	---	---
Vanadium	ppm	ASTM D5185(m)	<0.1	0	---	---
Iron	ppm	ASTM D5185(m)	<0.1	0	---	---

CONTAMINANTS

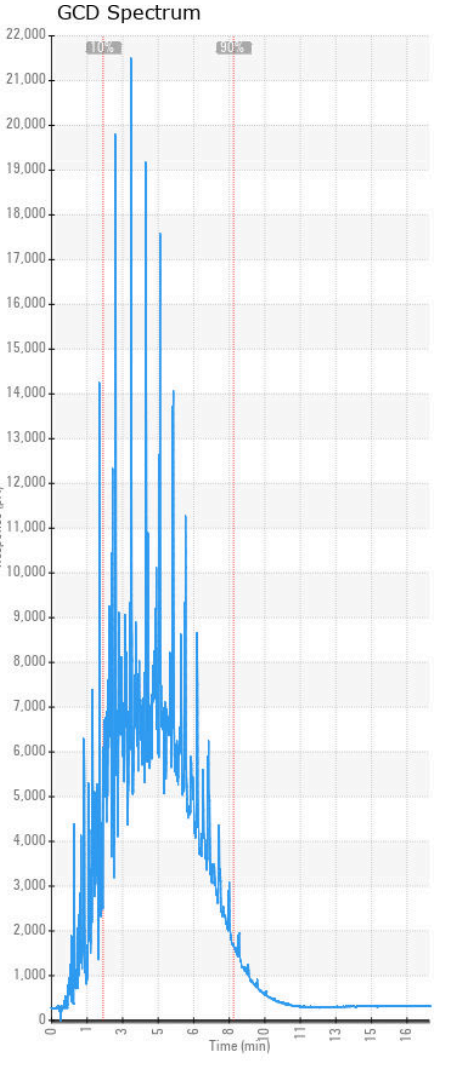
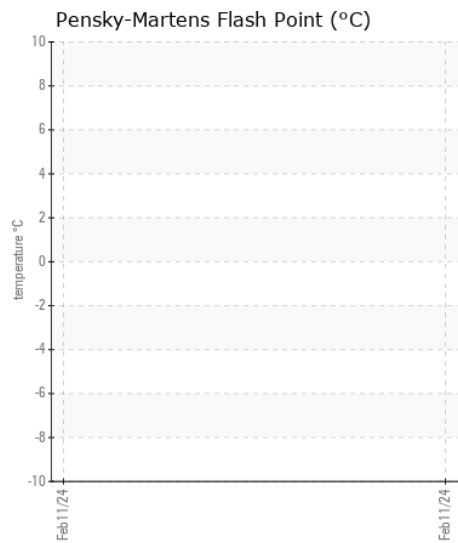
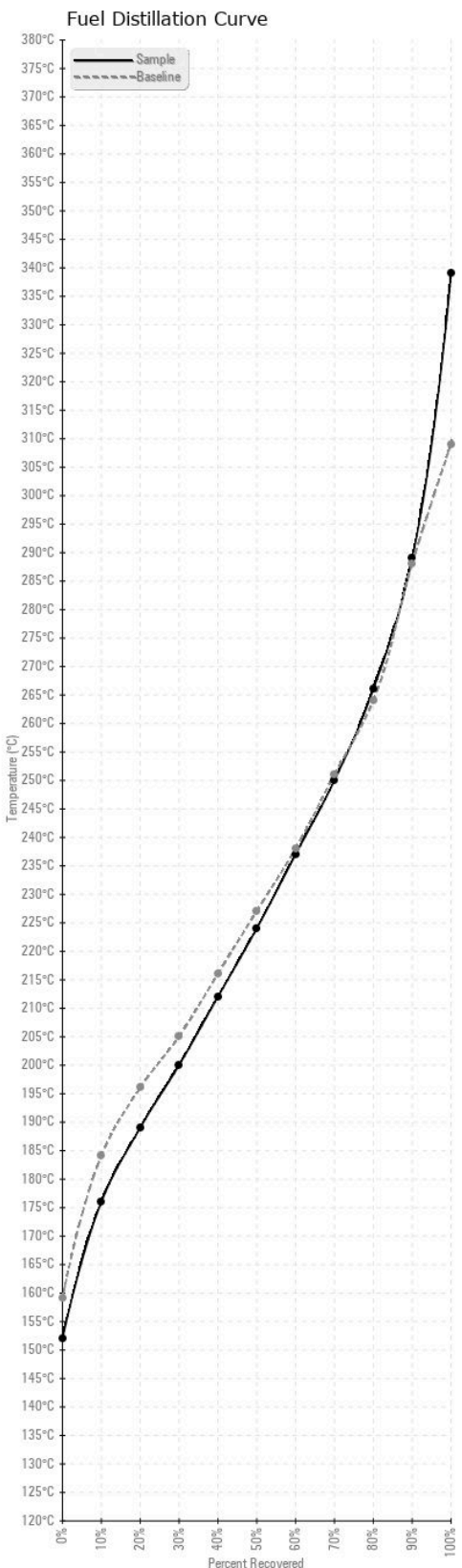
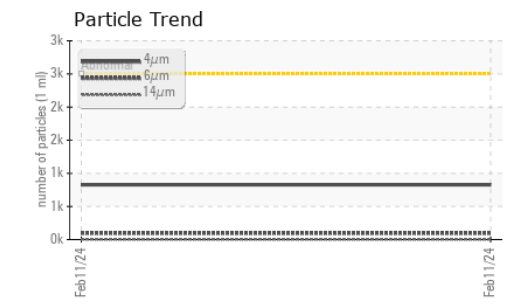
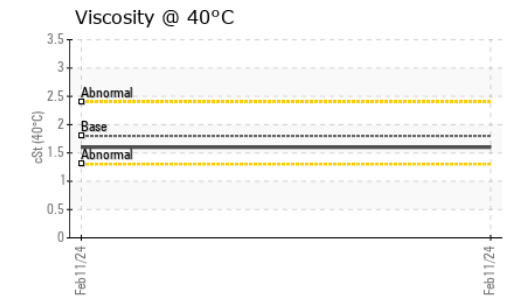
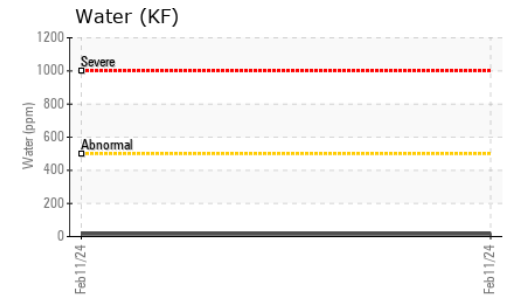
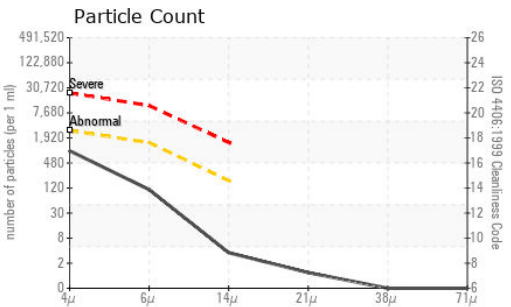
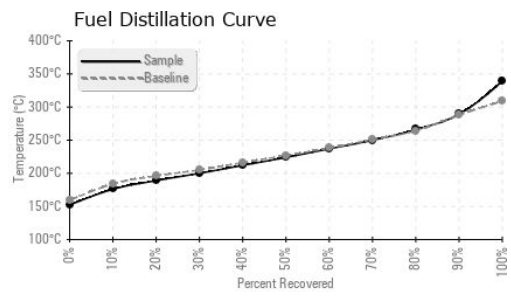
La propreté du système est acceptable pour votre objectif de propreté ISO 4406. La teneur en eau est négligeable. Il n'y a aucun indice de contamination dans le carburant diesel.

Silicon	ppm	ASTM D5185(m)	<1.0	0	---	---
Sodium	ppm	ASTM D5185(m)	<0.1	<1	---	---
Potassium	ppm	ASTM D5185(m)	<0.1	0	---	---
Water	%	ASTM D6304*	<0.05	0.002	---	---
ppm Water	ppm	ASTM D6304*	<500	16	---	---
Particles >4µm		ASTM D7647	>2500	826	---	---
Particles >6µm		ASTM D7647	>1300	97	---	---
Particles >14µm		ASTM D7647	>160	3	---	---
Particles >21µm		ASTM D7647	>40	1	---	---
Particles >38µm		ASTM D7647	>10	0	---	---
Particles >71µm		ASTM D7647	>3	0	---	---
Oil Cleanliness		ISO 4406 (c)	>18/17/14	17/14/9	---	---
Calcium	ppm	ASTM D5185(m)	<0.1	<1	---	---
Magnesium	ppm	ASTM D5185(m)	<0.1	0	---	---
Phosphorus	ppm	ASTM D5185(m)	<0.1	<1	---	---
Zinc	ppm	ASTM D5185(m)	<0.1	<1	---	---

FUEL CONDITION

Tous les essais en laboratoire indiquent que cet échantillon satisfait aux spécifications pour le carburant diesel à ultra-faible teneur de soufre No.1 (US EPA/CGSB-3.517-3 type A).

Specific Gravity		ASTM D1298*	0.825	0.818	---	---
Fuel Color	text	Visual Screen*	Clear	Pink	---	---
Visc @ 40°C	cSt	ASTM D7279(m)	1.8	1.6	---	---
Sulfur	ppm	ASTM D5185(m)	10	13	---	---
Initial Boiling Point	°C	ASTM D2887*	159	152	---	---
10% Distill Point	°C	ASTM D2887*	184	176	---	---
20% Distill Point	°C	ASTM D2887*	196	189	---	---
30% Distill Point	°C	ASTM D2887*	205	200	---	---
40% Distill Point	°C	ASTM D2887*	216	212	---	---
50% Distill Point	°C	ASTM D2887*	227	224	---	---
60% Distill Point	°C	ASTM D2887*	238	237	---	---
70% Distill Point	°C	ASTM D2887*	251	250	---	---
80% Distill Point	°C	ASTM D2887*	264	266	---	---
90% Distill Point	°C	ASTM D2887*	288	289	---	---
Final Boiling Point	°C	ASTM D2887*	309	339	---	---
API Gravity		ASTM D1298*	40.1	41	---	---
Cetane Index		ASTM D4737*	<40.0	47	---	---



Laboratory : WearCheck - C8-1175 Appleby Line, Burlington, ON L7L 5H9
Sample No. : WA0021135 **Received** : 16 Feb 2024
Lab Number : 02616483 **Tested** : 21 Feb 2024
Unique Number : 5733593 **Diagnosed** : 21 Feb 2024 - Kevin Marson
Test Package : FUEL (Additional Tests: CC Flash, GC-PercFuel, PrtCount)

Wajax Limited
 2997 AV. WATT
 Quebec, QC
 CA G1X 3W1
 Contact: Steve Racine
 sracine@wajax.com
 T:
 F: (418)651-4448

To discuss this sample report, contact Customer Service at 1-800-268-2131.
 Test denoted (*) outside scope of accreditation, (m) method modified, (e) tested at external lab.
 Validity of results and interpretation are based on the sample and information as supplied.