



FUEL REPORT

CORROSION	NORMAL
CONTAMINANTS	NORMAL
FUEL CONDITION	SEVERE

Area

[14278]

Machine Id

TRAIL BULLY 2017

Component

Diesel Fuel

Fluid

DIESEL FUEL No. 1 (--- GAL)

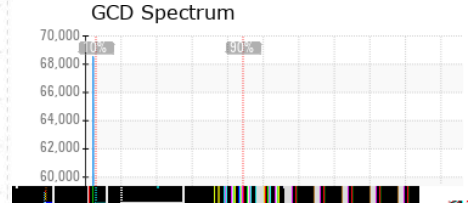
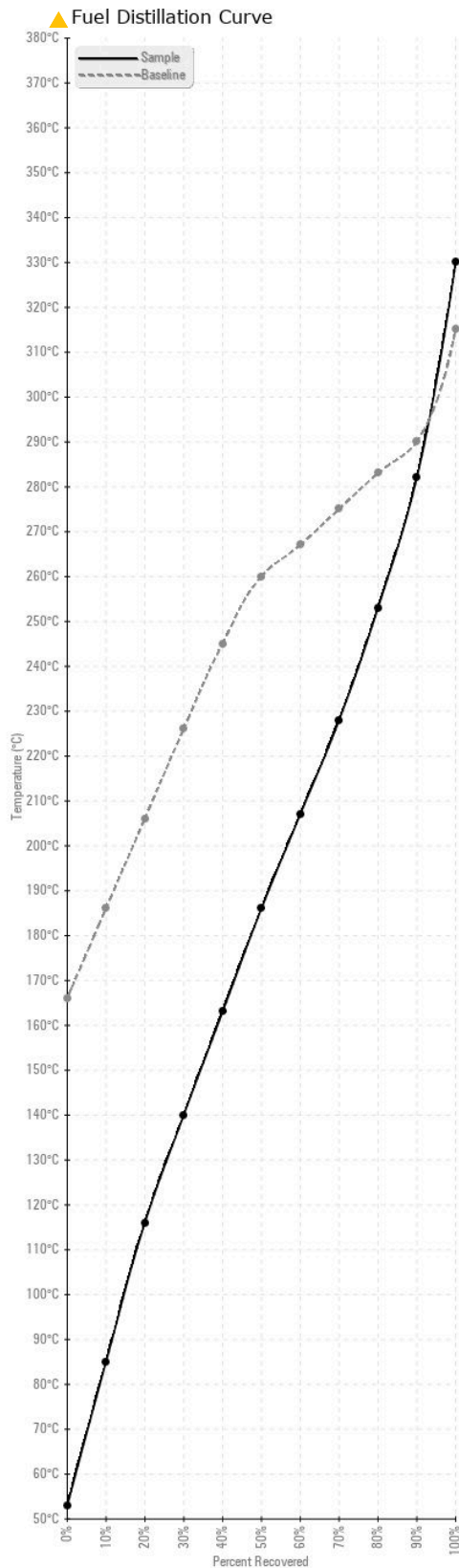
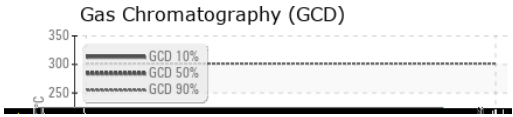
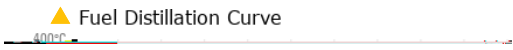
RECOMMENDATION

We recommend that you drain the fuel from the component if this has not already been done. We recommend an early resample to monitor this condition. Diagnostician's Note: Laboratory testing indicates the diesel fuel is contaminated with approximately 20% gasoline.

CORROSION

{not applicable}

Test	UOM	Method	Limit/Abn	Current	History1	History2
Sample Number		Client Info		WC0667883	---	---
Sample Date		Client Info		15 Feb 2024	---	---
Machine Age	hrs	Client Info		0	---	---
Sample Status				SEVERE	---	---
Pensky-Martens Flash Point	°C	ASTM D7215*		🔴 -26.2	---	---
Initial Boiling Point	°C	ASTM D2887*	166	🟡 53	---	---
10% Distill Point	°C	ASTM D2887*	186	🟡 85	---	---
20% Distill Point	°C	ASTM D2887*	206	🟡 116	---	---
30% Distill Point	°C	ASTM D2887*	226	140	---	---
40% Distill Point	°C	ASTM D2887*	245	163	---	---
50% Distill Point	°C	ASTM D2887*	260	🟡 186	---	---
60% Distill Point	°C	ASTM D2887*	267	207	---	---
70% Distill Point	°C	ASTM D2887*	275	228	---	---
80% Distill Point	°C	ASTM D2887*	283	253	---	---
90% Distill Point	°C	ASTM D2887*	290	282	---	---
Final Boiling Point	°C	ASTM D2887*	315	🟡 330	---	---
Cetane Index		ASTM D4737*	<40.0	47	---	---



Laboratory : WearCheck - C8-1175 Appleby Line, Burlington, ON L7L 5H9
Sample No. : WC0667883
Lab Number : 02616496
Unique Number : 5733606
Test Package : FUEL (Additional Tests: CC Flash, GC-PercFuel, PrtCount, SpecGravity)

Received : 16 Feb 2024
Tested : 26 Feb 2024
Diagnosed : 26 Feb 2024 - Kevin Marson

Mecanique J. Clair
 175 rue Distillerie
 Beaupre, QC
 CA G0A 1E0
 Contact: Pierre B
 services@mecaniqueclair.com
 T: (418)827-5100
 F: (418)827-8085

To discuss this sample report, contact Customer Service at 1-800-268-2131.
 Test denoted (*) outside scope of accreditation, (m) method modified, (e) tested at external lab.
 Validity of results and interpretation are based on the sample and information as supplied.