



FUEL REPORT

| | |
|----------------|------------------|
| CORROSION | NORMAL |
| CONTAMINANTS | ATTENTION |
| FUEL CONDITION | NORMAL |

Area

[BQ25963]

Machine Id

61068

Component

Diesel Fuel

Fluid

No.2 DIESEL FUEL (ULTRALOW SULPHUR) (--- GAL)

RECOMMENDATION

Les tests de laboratoire indiquent que ce carburant peut être utilisé et qu'il répond à toutes les exigences. Nous vous recommandons de filtrer ce fluide avant de l'utiliser. Nous recommandons le remplacement des filtres de ce composant. Échantillonner de nouveau l'équipement au prochain intervalle de vidange afin d'en surveiller la condition.

CORROSION

{sans objet}

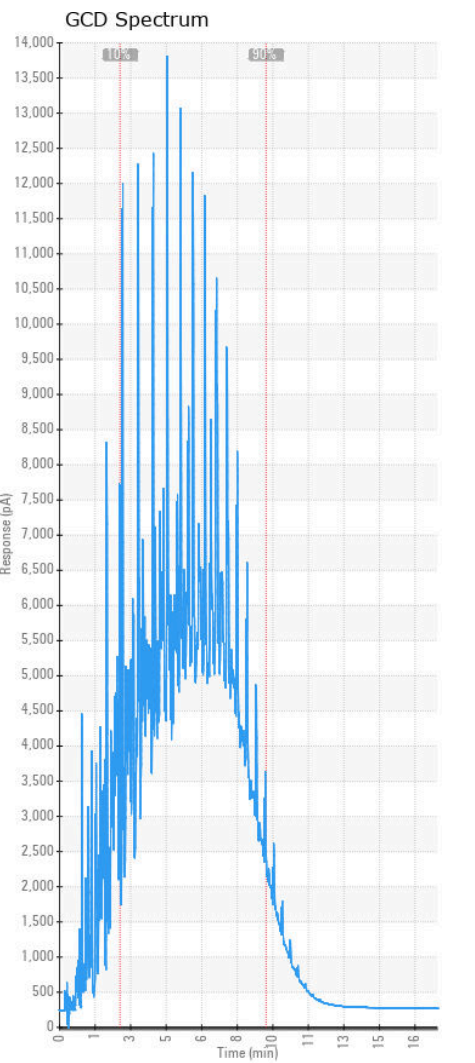
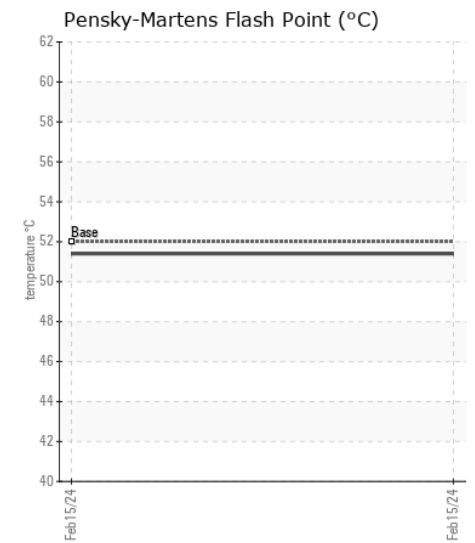
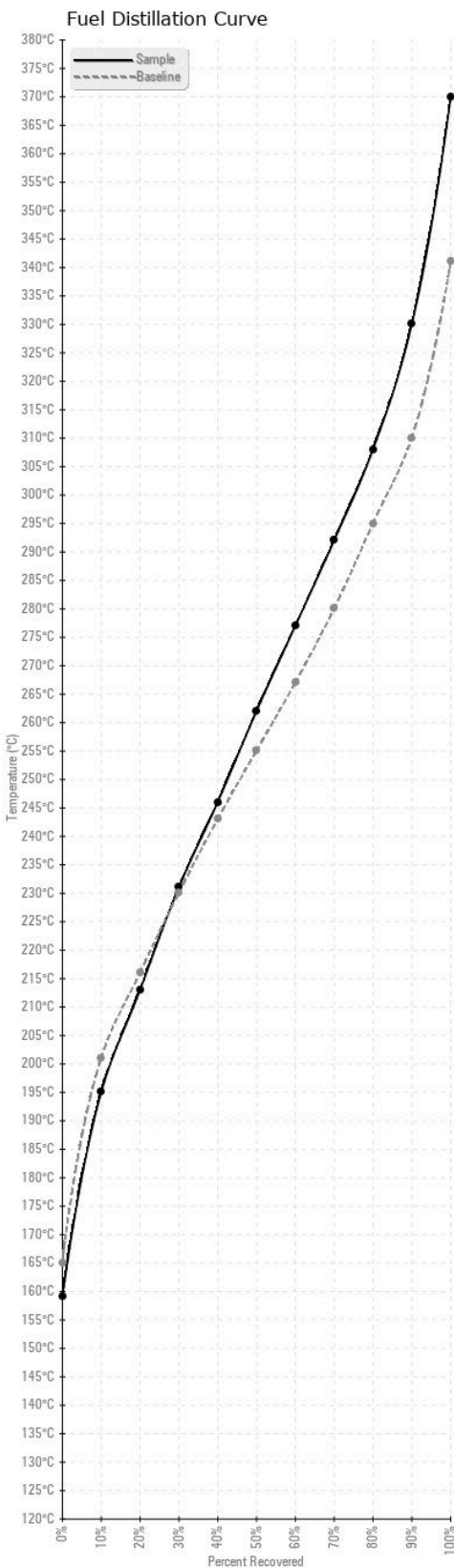
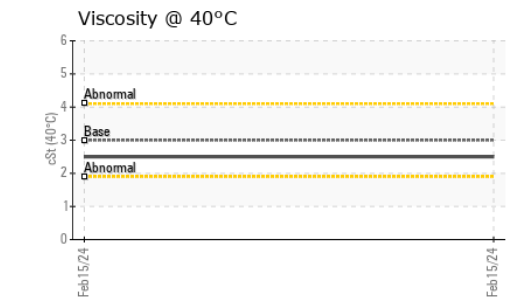
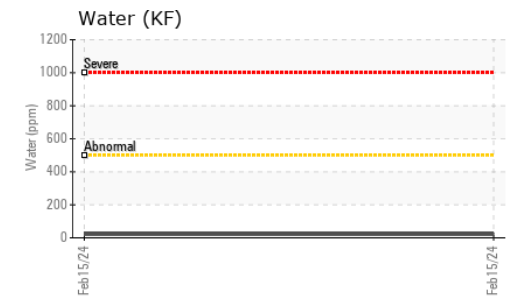
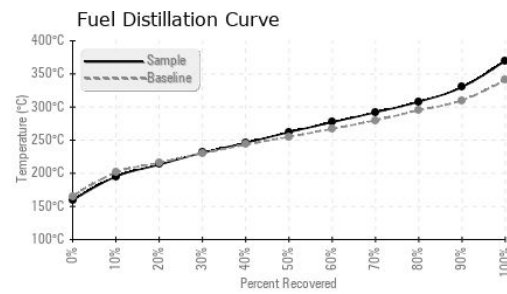
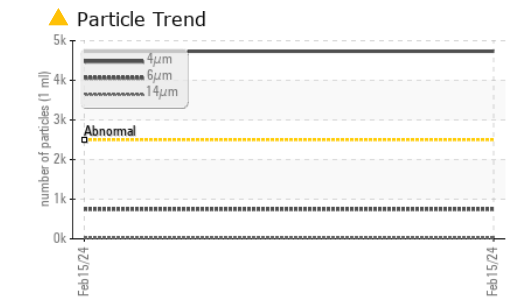
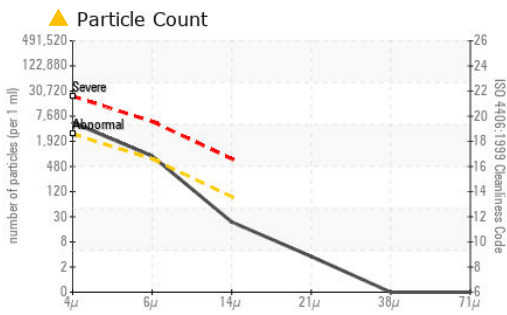
CONTAMINANTS

Il y a une légère quantité de limon (particules de 4 à 14 microns) dans le carburant. La teneur en eau est négligeable.

FUEL CONDITION

Tous les essais en laboratoire indiquent que cet échantillon satisfait aux spécifications pour le carburant diesel à ultra-faible teneur de soufre No.2 (US EPA/CGSB-3.517-3 type B).

| Test | UOM | Method | Limit/Abn | Current | History1 | History2 |
|----------------------------|------|----------------|-----------|--------------------|----------|----------|
| Sample Number | | Client Info | | CU0021596 | --- | --- |
| Sample Date | | Client Info | | 15 Feb 2024 | --- | --- |
| Machine Age | hrs | Client Info | | 9525 | --- | --- |
| Sample Status | | | | ATTENTION | --- | --- |
| Aluminum | ppm | ASTM D5185(m) | <0.1 | 0 | --- | --- |
| Nickel | ppm | ASTM D5185(m) | <0.1 | 0 | --- | --- |
| Lead | ppm | ASTM D5185(m) | <0.1 | 0 | --- | --- |
| Vanadium | ppm | ASTM D5185(m) | <0.1 | 0 | --- | --- |
| Iron | ppm | ASTM D5185(m) | <0.1 | 0 | --- | --- |
| Silicon | ppm | ASTM D5185(m) | <1.0 | 0 | --- | --- |
| Sodium | ppm | ASTM D5185(m) | <0.1 | <1 | --- | --- |
| Potassium | ppm | ASTM D5185(m) | <0.1 | 0 | --- | --- |
| Water | % | ASTM D6304* | <0.05 | 0.002 | --- | --- |
| ppm Water | ppm | ASTM D6304* | <500 | 22 | --- | --- |
| Particles >4µm | | ASTM D7647 | >2500 | ▲ 4733 | --- | --- |
| Particles >6µm | | ASTM D7647 | >640 | ▲ 748 | --- | --- |
| Particles >14µm | | ASTM D7647 | >80 | 20 | --- | --- |
| Particles >21µm | | ASTM D7647 | >20 | 3 | --- | --- |
| Particles >38µm | | ASTM D7647 | >4 | 0 | --- | --- |
| Particles >71µm | | ASTM D7647 | >3 | 0 | --- | --- |
| Oil Cleanliness | | ISO 4406 (c) | >18/16/13 | ▲ 19/17/11 | --- | --- |
| Calcium | ppm | ASTM D5185(m) | <0.1 | 0 | --- | --- |
| Magnesium | ppm | ASTM D5185(m) | <0.1 | 0 | --- | --- |
| Phosphorus | ppm | ASTM D5185(m) | <0.1 | <1 | --- | --- |
| Zinc | ppm | ASTM D5185(m) | <0.1 | <1 | --- | --- |
| Specific Gravity | | ASTM D1298* | 0.839 | 0.836 | --- | --- |
| Fuel Color | text | Visual Screen* | Yellow | Yellow | --- | --- |
| Visc @ 40°C | cSt | ASTM D7279(m) | 3.0 | 2.5 | --- | --- |
| Pensky-Martens Flash Point | °C | ASTM D7215* | 52 | 51.4 | --- | --- |
| Sulfur | ppm | ASTM D5185(m) | 10 | 10 | --- | --- |
| Initial Boiling Point | °C | ASTM D2887* | 165 | 159 | --- | --- |
| 10% Distill Point | °C | ASTM D2887* | 201 | 195 | --- | --- |
| 20% Distill Point | °C | ASTM D2887* | 216 | 213 | --- | --- |
| 30% Distill Point | °C | ASTM D2887* | 230 | 231 | --- | --- |
| 40% Distill Point | °C | ASTM D2887* | 243 | 246 | --- | --- |
| 50% Distill Point | °C | ASTM D2887* | 255 | 262 | --- | --- |
| 60% Distill Point | °C | ASTM D2887* | 267 | 277 | --- | --- |
| 70% Distill Point | °C | ASTM D2887* | 280 | 292 | --- | --- |
| 80% Distill Point | °C | ASTM D2887* | 295 | 308 | --- | --- |
| 90% Distill Point | °C | ASTM D2887* | 310 | 330 | --- | --- |
| Final Boiling Point | °C | ASTM D2887* | 341 | 370 | --- | --- |
| API Gravity | | ASTM D1298* | 37.7 | 37 | --- | --- |
| Cetane Index | | ASTM D4737* | <40.0 | 49 | --- | --- |



Laboratory : WearCheck - C8-1175 Appleby Line, Burlington, ON L7L 5H9
Sample No. : CU0021596
Lab Number : 02617278
Unique Number : 5734388
Test Package : FUEL (Additional Tests: CC Flash, GC-PercFuel, PrtCount)

Received : 21 Feb 2024
Tested : 26 Feb 2024
Diagnosed : 26 Feb 2024 - Kevin Marson

To discuss this sample report, contact Customer Service at 1-800-268-2131.
 Test denoted (*) outside scope of accreditation, (m) method modified, (e) tested at external lab.
 Validity of results and interpretation are based on the sample and information as supplied.

MACK ST-FOY
 2550 RUE WATT
 QUEBEC, QC
 CA G1P 3T4
 Contact: Carl St-Martin
 carl.stmartin@camionsmf.com
 T: (418)951-9847
 F: (418)651-8790