



# OIL ANALYSIS REPORT

CORROSION	<b>NORMAL</b>
CONTAMINANTS	<b>NORMAL</b>
FUEL CONDITION	<b>NORMAL</b>

Machine Id  
**STARTOP**  
 Component  
**Diesel Fuel**  
 Fluid  
**DIESEL FUEL No. 2 (--- GAL)**

## RECOMMENDATION

Please contact your representative for information regarding the proper sampling kits for your service.

Test	UOM	Method	Limit/Abn	Current	History1	History2
Sample Number		Client Info		<b>CU</b>	---	---
Sample Date		Client Info		<b>01 Mar 2024</b>	---	---
Machine Age	hrs	Client Info		<b>0</b>	---	---
Sample Status				<b>NORMAL</b>	---	---

## CORROSION

{not applicable}

Iron	ppm	ASTM D5185(m)	>2	<b>0</b>	---	---
Chromium	ppm	ASTM D5185(m)	>2	<b>0</b>	---	---
Nickel	ppm	ASTM D5185(m)	>2	<b>0</b>	---	---
Titanium	ppm	ASTM D5185(m)	>2	<b>0</b>	---	---
Silver	ppm	ASTM D5185(m)	>2	<b>0</b>	---	---
Aluminum	ppm	ASTM D5185(m)	>2	<b>0</b>	---	---
Lead	ppm	ASTM D5185(m)	>2	<b>0</b>	---	---
Copper	ppm	ASTM D5185(m)	>2	<b>0</b>	---	---
Tin	ppm	ASTM D5185(m)	>2	<b>0</b>	---	---
Vanadium	ppm	ASTM D5185(m)		<b>0</b>	---	---
White Metal	scalar	Visual*	NONE	<b>NONE</b>	---	---
Yellow Metal	scalar	Visual*	NONE	<b>NONE</b>	---	---

## CONTAMINANTS

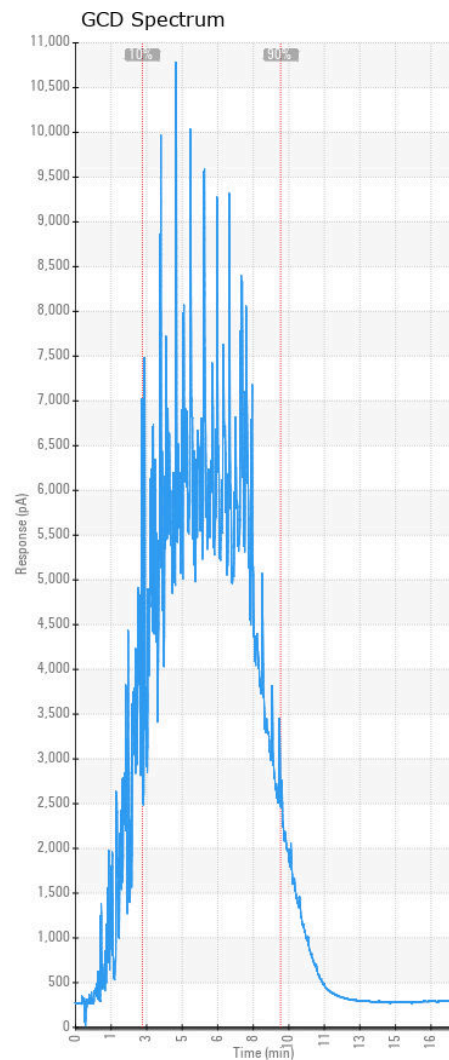
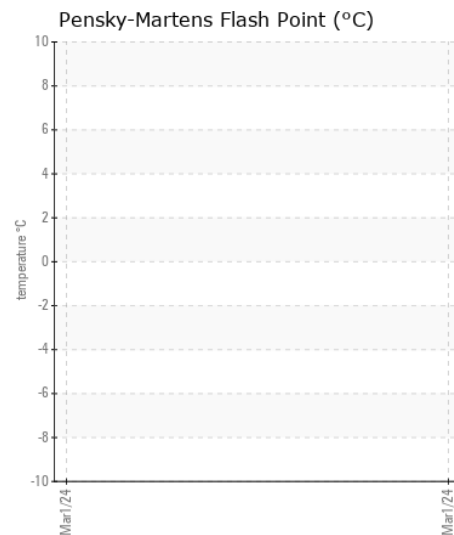
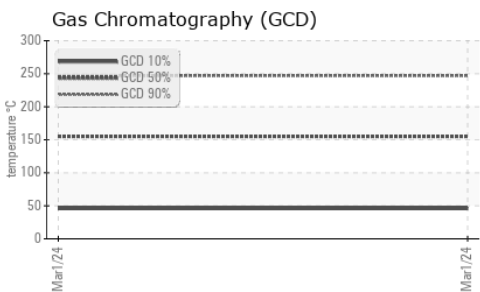
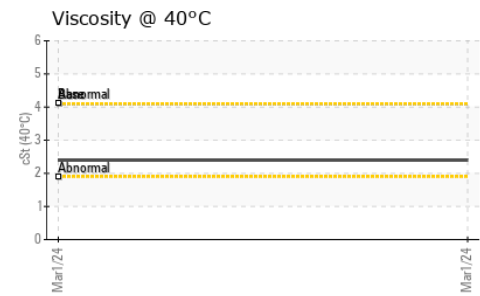
There is no indication of any contamination in the component(unconfirmed).

Silicon	ppm	ASTM D5185(m)	>10	<b>0</b>	---	---
Potassium	ppm	ASTM D5185(m)	>20	<b>0</b>	---	---
Silt	scalar	Visual*	NONE	<b>NONE</b>	---	---
Debris	scalar	Visual*	NONE	<b>NONE</b>	---	---
Sand/Dirt	scalar	Visual*	NONE	<b>NONE</b>	---	---
Appearance	scalar	Visual*	NORML	<b>NORML</b>	---	---
Odor	scalar	Visual*	NORML	<b>NORML</b>	---	---
Emulsified Water	scalar	Visual*	>0.05	<b>NEG</b>	---	---

## FUEL CONDITION

Not enough sample submitted to determine fuel condition and/or classification.

Sodium	ppm	ASTM D5185(m)		<b>0</b>	---	---
Boron	ppm	ASTM D5185(m)		<b>0</b>	---	---
Barium	ppm	ASTM D5185(m)		<b>0</b>	---	---
Molybdenum	ppm	ASTM D5185(m)		<b>0</b>	---	---
Manganese	ppm	ASTM D5185(m)		<b>0</b>	---	---
Magnesium	ppm	ASTM D5185(m)		<b>0</b>	---	---
Calcium	ppm	ASTM D5185(m)		<b>0</b>	---	---
Phosphorus	ppm	ASTM D5185(m)		<b>&lt;1</b>	---	---
Zinc	ppm	ASTM D5185(m)		<b>0</b>	---	---
Sulfur	ppm	ASTM D5185(m)		<b>5</b>	---	---
Visc @ 40°C	cSt	ASTM D7279(m)	4.1	<b>2.4</b>	---	---
(GCD) % < 335°C	°C	ASTM D2887*		<b>99.01</b>	---	---
(GCD) Initial Boiling Point	°C	ASTM D2887*		<b>-37.0</b>	---	---
(GCD) 5% Distillation Point	°C	ASTM D2887*		<b>18.8</b>	---	---
(GCD) 10% Distillation Point	°C	ASTM D2887*		<b>45.9</b>	---	---
(GCD) 20% Distillation Point	°C	ASTM D2887*		<b>83.2</b>	---	---
(GCD) 30% Distillation Point	°C	ASTM D2887*		<b>109.4</b>	---	---
(GCD) 40% Distillation Point	°C	ASTM D2887*		<b>132.7</b>	---	---
(GCD) 50% Distillation Point	°C	ASTM D2887*		<b>155.1</b>	---	---
(GCD) 60% Distillation Point	°C	ASTM D2887*		<b>175.9</b>	---	---
(GCD) 70% Distillation Point	°C	ASTM D2887*		<b>197.8</b>	---	---
(GCD) 80% Distillation Point	°C	ASTM D2887*		<b>217.9</b>	---	---
(GCD) 90% Distillation Point	°C	ASTM D2887*		<b>246.9</b>	---	---
(GCD) FBP% Distillation Point	°C	ASTM D2887*		<b>329.5</b>	---	---



ISO 17025:2017  
Accredited  
Laboratory

**Laboratory** : WearCheck - C8-1175 Appleby Line, Burlington, ON L7L 5H9  
**Sample No.** : CU  
**Lab Number** : 02620378  
**Unique Number** : 5737488  
**Test Package** : TEST ( Additional Tests: GC-PercFuel, GCD, ICP, KV40, Spat )

**Received** : 06 Mar 2024  
**Tested** : 13 Mar 2024  
**Diagnosed** : 13 Mar 2024 - Kevin Marson

**CUMMINS EASTERN CANADA LP**  
 3189 SWANSEA CRESCENT  
 OTTAWA, ON  
 CA K1G 3W5  
 Contact: Cindy Harrison  
 cindy.harrison@cummins.com

To discuss this sample report, contact Customer Service at 1-800-268-2131.  
 Test denoted (\*) outside scope of accreditation, (m) method modified, (e) tested at external lab.  
 Validity of results and interpretation are based on the sample and information as supplied.

T: (613)736-1146  
 F: x: