



OIL ANALYSIS REPORT

WEAR	NORMAL
CONTAMINATION	ABNORMAL
FLUID CONDITION	ATTENTION

Area
[02625092]
 Machine Id
JCB 509-42 14PN
 Component
Hydraulic System
 Fluid
PANOLIN HLP SYNTH 46 (--- GAL)

RECOMMENDATION

Nous recommandons le remplacement des filtres de ce composant. Confirmez la source du lubrifiant utilisé pour l'appoint/remplissage. Échantillonner de nouveau l'équipement au prochain intervalle de vidange afin d'en surveiller la condition. Le fluide était spécifié comme PANOLIN HLP SYNTH 46, toutefois, une comparaison avec d'autres fluides indiquent que ce fluide est du ISO 46 AW Hydraulic Oil. Veuillez confirmer la viscosité de l'huile et veuillez préciser la marque de votre prochain échantillon.

Test	UOM	Method	Limit/Abn	Current	History1	History2
Sample Number		Client Info		PC0055591	---	---
Sample Date		Client Info		26 Mar 2024	---	---
Machine Age	hrs	Client Info		9	---	---
Oil Age	hrs	Client Info		9	---	---
Filter Age	hrs	Client Info		9	---	---
Oil Changed		Client Info		Not Chngd	---	---
Filter Changed		Client Info		Not Chngd	---	---
Sample Status				ABNORMAL	---	---

WEAR

Les taux d'usure de tous les composants sont normaux.

Iron	ppm	ASTM D5185(m)	>20	0	---	---
Chromium	ppm	ASTM D5185(m)	>10	0	---	---
Nickel	ppm	ASTM D5185(m)	>10	0	---	---
Titanium	ppm	ASTM D5185(m)		0	---	---
Silver	ppm	ASTM D5185(m)		0	---	---
Aluminum	ppm	ASTM D5185(m)	>10	0	---	---
Lead	ppm	ASTM D5185(m)	>10	0	---	---
Copper	ppm	ASTM D5185(m)	>75	<1	---	---
Tin	ppm	ASTM D5185(m)	>10	0	---	---
Vanadium	ppm	ASTM D5185(m)		0	---	---
White Metal	scalar	Visual*	NONE	NONE	---	---
Yellow Metal	scalar	Visual*	NONE	NONE	---	---

CONTAMINATION

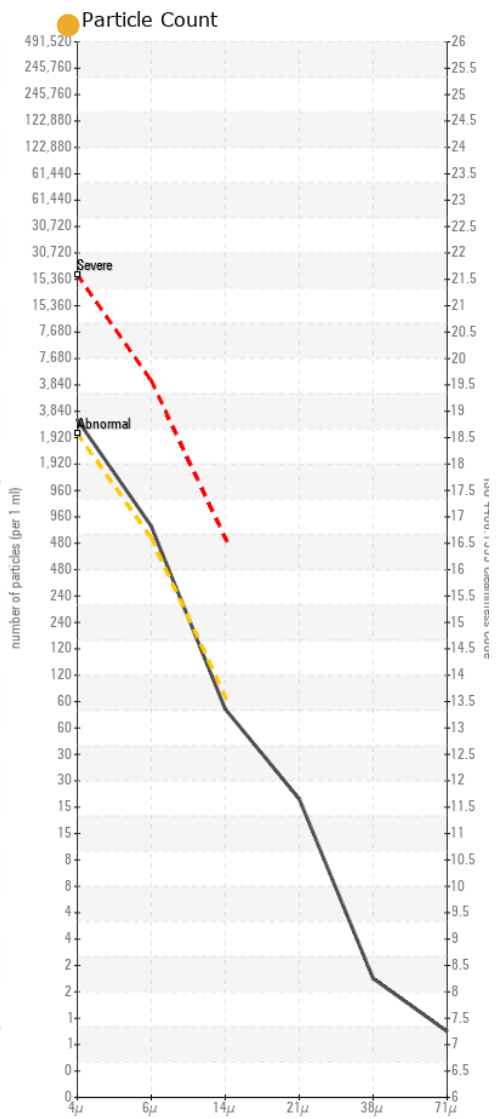
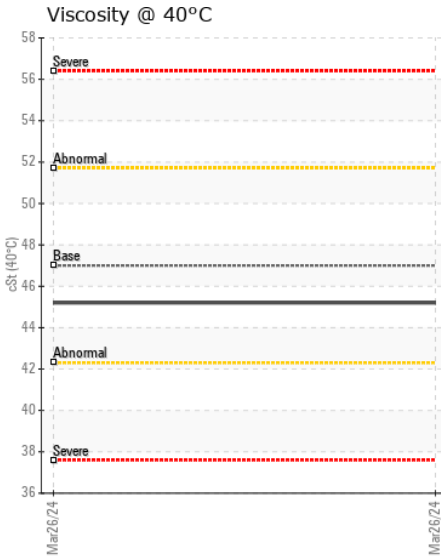
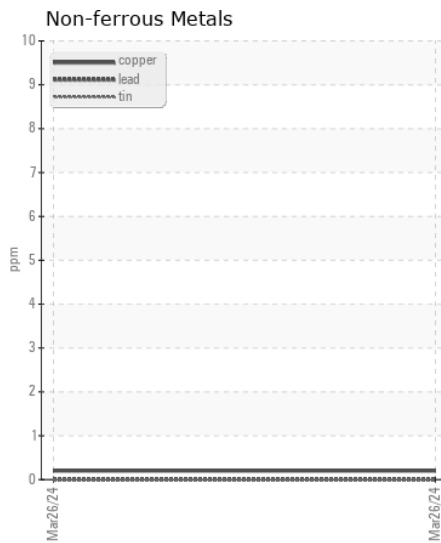
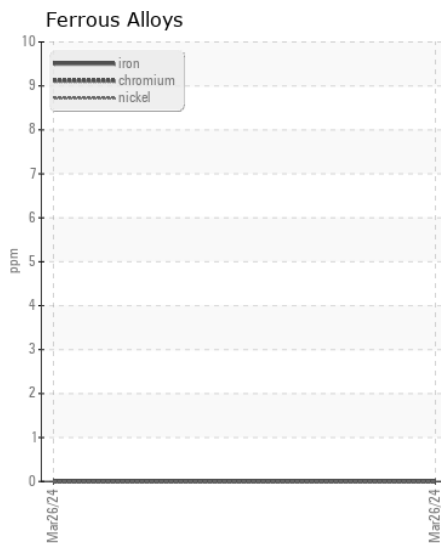
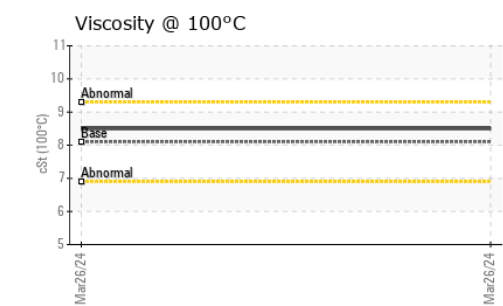
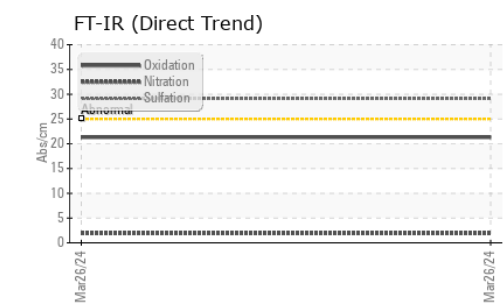
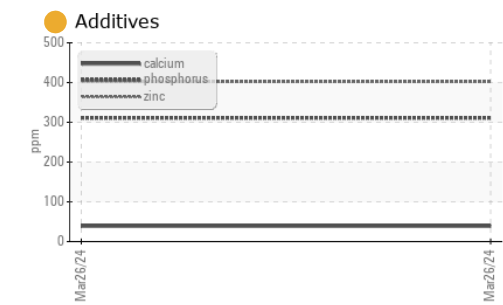
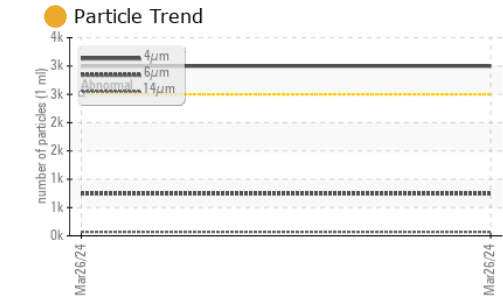
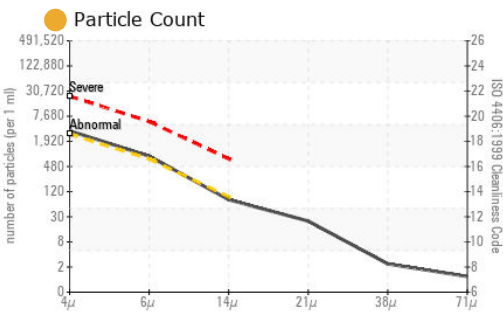
Il y a une légère quantité de limon (particules de 4 à 14 microns) dans l'huile. Il y a une faible concentration (86.5%) d'huile minérale présente dans le fluide.

Silicon	ppm	ASTM D5185(m)	>20	0	---	---
Potassium	ppm	ASTM D5185(m)	>20	<1	---	---
Water		WC Method	>0.05	NEG	---	---
Soot %	%	ASTM D7844*		0	---	---
Nitration	Abs/cm	ASTM D7624*		1.9	---	---
Sulfation	Abs/.1mm	ASTM D7415*		29.1	---	---
Mineral Oil Content	%	ASTM D7418*	<5.0%	▲ 86.5	---	---
Particles >4µm		ASTM D7647	>2500	● 2998	---	---
Particles >6µm		ASTM D7647	>640	● 744	---	---
Particles >14µm		ASTM D7647	>80	● 68	---	---
Particles >21µm		ASTM D7647	>20	● 21	---	---
Particles >38µm		ASTM D7647	>4	● 2	---	---
Particles >71µm		ASTM D7647	>3	● 1	---	---
Oil Cleanliness		ISO 4406 (c)	>18/16/13	● 19/17/13	---	---
Silt	scalar	Visual*	NONE	NONE	---	---
Debris	scalar	Visual*	NONE	VLITE	---	---
Sand/Dirt	scalar	Visual*	NONE	NONE	---	---
Appearance	scalar	Visual*	NORML	NORML	---	---
Odor	scalar	Visual*	NORML	NORML	---	---
Emulsified Water	scalar	Visual*	>0.05	NEG	---	---

FLUID CONDITION

Les niveaux d'additifs indiquent l'ajout d'une autre marque ou d'un autre type d'huile. L'état de l'huile est acceptable pour la durée de service.

Sodium	ppm	ASTM D5185(m)		<1	---	---
Boron	ppm	ASTM D5185(m)	0	<1	---	---
Barium	ppm	ASTM D5185(m)	0	0	---	---
Molybdenum	ppm	ASTM D5185(m)	0	0	---	---
Manganese	ppm	ASTM D5185(m)	0	0	---	---
Magnesium	ppm	ASTM D5185(m)	0	0	---	---
Calcium	ppm	ASTM D5185(m)	0	● 39	---	---
Phosphorus	ppm	ASTM D5185(m)	1700	● 311	---	---
Zinc	ppm	ASTM D5185(m)	0	● 402	---	---
Sulfur	ppm	ASTM D5185(m)	1350	● 1664	---	---
Oxidation	Abs/.1mm	ASTM D7414*		21.3	---	---
Visc @ 40°C	cSt	ASTM D7279(m)	47.0	45.2	---	---
Visc @ 100°C	cSt	ASTM D7279(m)	8.1	8.5	---	---
Viscosity Index (VI)	Scale	ASTM D2270*	146	168	---	---



Laboratory : WearCheck - C8-1175 Appleby Line, Burlington, ON L7L 5H9
Sample No. : PC0055591 **Received** : 27 Mar 2024
Lab Number : 02624991 **Tested** : 04 Apr 2024
Unique Number : 5750110 **Diagnosed** : 04 Apr 2024 - Bill Quesnel
Test Package : MOB 2 (Additional Tests: FT-IR, KV100, Mineral Oil Content, VI)

To discuss this sample report, contact Customer Service at 1-800-268-2131.
 Test denoted (*) outside scope of accreditation, (m) method modified, (e) tested at external lab.
 Validity of results and interpretation are based on the sample and information as supplied.

Location Simplex
 1900 Rue Des Futailles
 Montreal, QC
 CA H1N 3T5
 Contact: Walter Massicotte
 wmassicotte@simplex.ca
 T: (514)251-9281
 F:

MINERAL OIL CONTENT REPORT

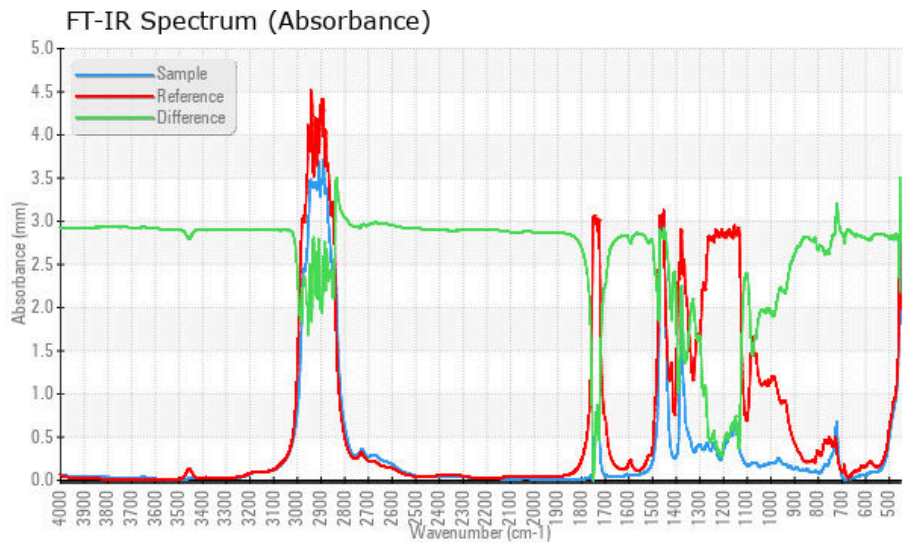
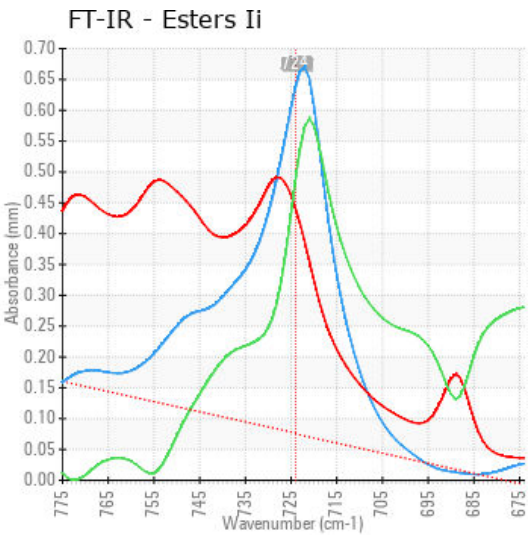
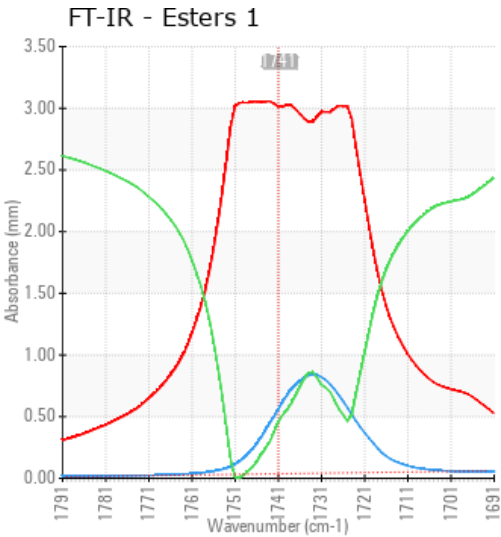
FAIL



Area
[02625092]
 Machine Id
JCB 509-42 14PN
 Component
Hydraulic System
 Fluid
PANOLIN HLP SYNTH 46 (--- GAL)

SPECTRAL ANALYSIS

	method	limit/base	current	history1	history2
Mineral Oil Content %	ASTM D7418*	<5.0%	▲ 86.5	---	---
Zinc ppm	ASTM D5185(m)	0	● 402	---	---



Laboratory : WearCheck - C8-1175 Appleby Line, Burlington, ON L7L 5H9
Sample No. : PC0055591 **Received** : 27 Mar 2024
Lab Number : 02624991 **Tested** : 04 Apr 2024
Unique Number : 5750110 **Diagnosed** : 04 Apr 2024 - Bill Quesnel
Test Package : MOB 2 (Additional Tests: FT-IR, KV100, Mineral Oil Content, VI)

To discuss this sample report, contact Customer Service at 1-800-268-2131.
 Test denoted (*) outside scope of accreditation, (m) method modified, (e) tested at external lab.
 Validity of results and interpretation are based on the sample and information as supplied.

Location Simplex
 1900 Rue Des Futailles
 Montreal, QC
 CA H1N 3T5
 Contact: Walter Massicotte
 wmassicotte@simplex.ca
 T: (514)251-9281
 F:

This page left intentionally blank