



POWER SYSTEMS
SYSTÈMES DE PUISSANCE

FUEL REPORT

CORROSION
CONTAMINANTS
FUEL CONDITION

ABNORMAL
NORMAL
NORMAL

Area

[269874]

Machine Id

NO UNIT WA0020612

Component

Diesel Fuel

Fluid

No.2 DIESEL FUEL (ULTRALOW SULPHUR) (--- GAL)

RECOMMENDATION

Nous vous recommandons d'échantillonner de nouveau dès que possible afin de contrôler la situation.

Test	UOM	Method	Limit/Abn	Current	History1	History2
Sample Number		Client Info		WA0020612	---	---
Sample Date		Client Info		26 Mar 2024	---	---
Machine Age	hrs	Client Info		0	---	---
Sample Status				ABNORMAL	---	---

CORROSION

La concentration des métaux est élevée indiquant la présence de corrosion dans le système.

Aluminum	ppm	ASTM D5185(m)	<0.1	0	---	---
Nickel	ppm	ASTM D5185(m)	<0.1	0	---	---
Lead	ppm	ASTM D5185(m)	<0.1	▲ 2	---	---
Vanadium	ppm	ASTM D5185(m)	<0.1	0	---	---
Iron	ppm	ASTM D5185(m)	<0.1	0	---	---

CONTAMINANTS

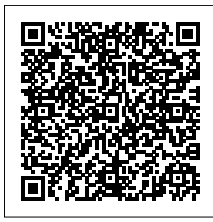
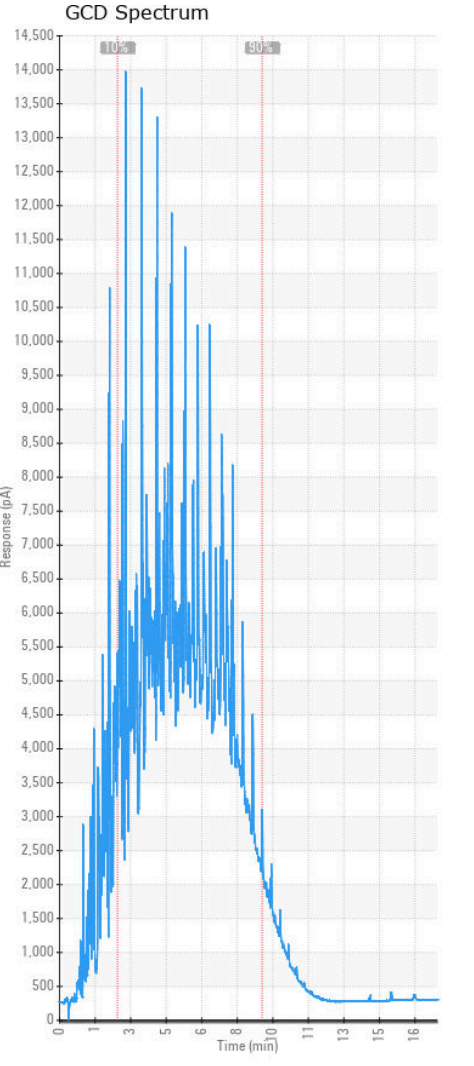
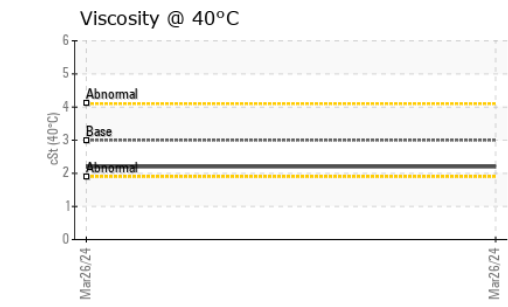
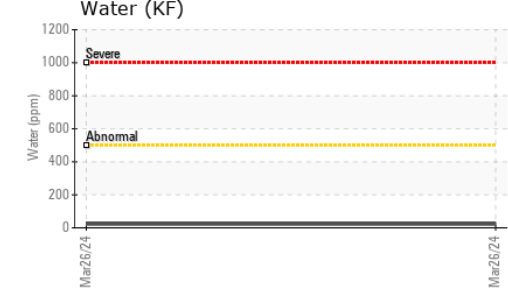
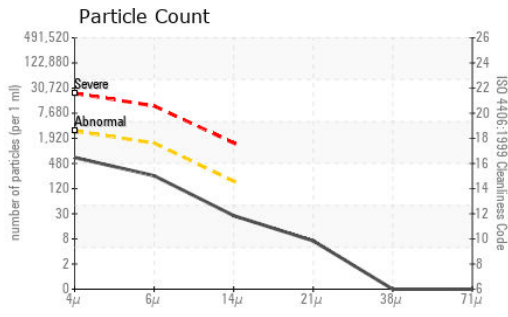
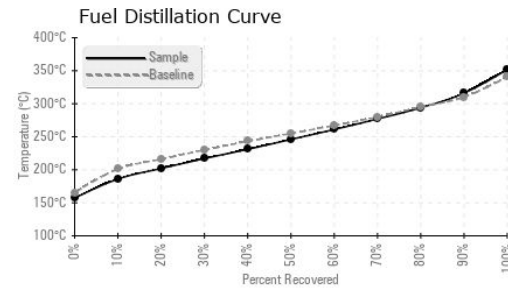
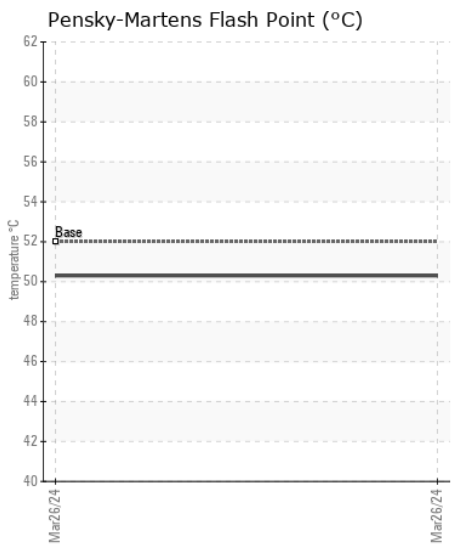
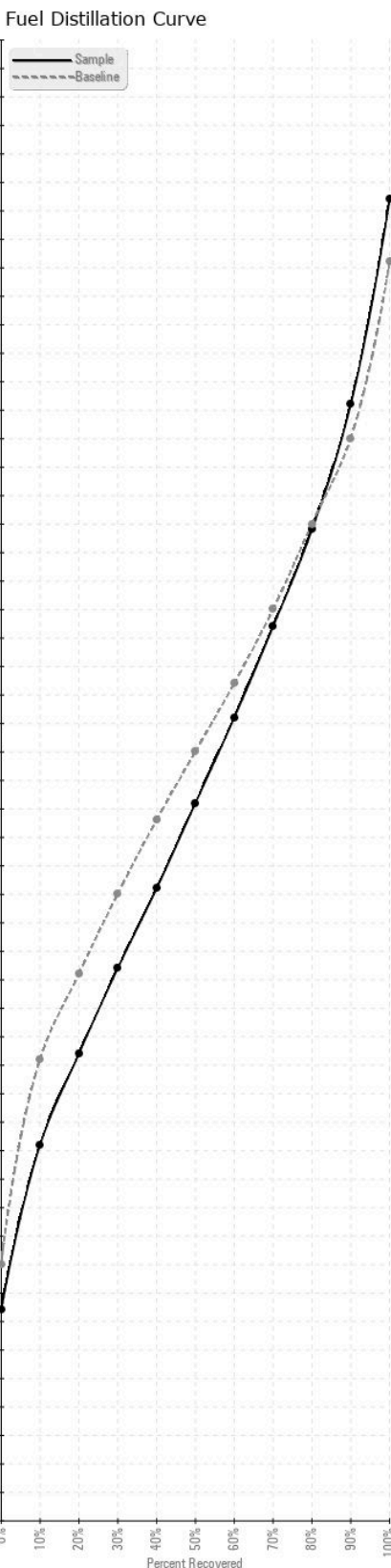
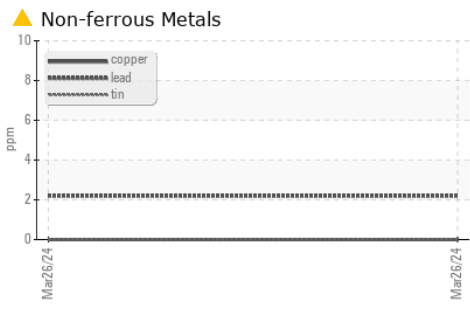
La propreté du système est acceptable pour votre objectif de propreté ISO 4406. La teneur en eau est négligeable.

Silicon	ppm	ASTM D5185(m)	<1.0	0	---	---
Sodium	ppm	ASTM D5185(m)	<0.1	<1	---	---
Potassium	ppm	ASTM D5185(m)	<0.1	0	---	---
Water	%	ASTM D6304*	<0.05	0.002	---	---
ppm Water	ppm	ASTM D6304*	<500	23	---	---
Particles >4µm		ASTM D7647	>2500	586	---	---
Particles >6µm		ASTM D7647	>1300	215	---	---
Particles >14µm		ASTM D7647	>160	24	---	---
Particles >21µm		ASTM D7647	>40	6	---	---
Particles >38µm		ASTM D7647	>10	0	---	---
Particles >71µm		ASTM D7647	>3	0	---	---
Oil Cleanliness		ISO 4406 (c)	>18/17/14	16/15/12	---	---
Calcium	ppm	ASTM D5185(m)	<0.1	<1	---	---
Magnesium	ppm	ASTM D5185(m)	<0.1	<1	---	---
Phosphorus	ppm	ASTM D5185(m)	<0.1	<1	---	---
Zinc	ppm	ASTM D5185(m)	<0.1	<1	---	---

FUEL CONDITION

Tous les essais en laboratoire indiquent que cet échantillon satisfait aux spécifications pour le carburant diesel à ultra-faible teneur de soufre No.2 (US EPA/CGSB-3.517-3 type B).

Specific Gravity		ASTM D1298*	0.839	0.833	---	---
Fuel Color	text	Visual Screen*	Yellow	Red	---	---
Visc @ 40°C	cSt	ASTM D7279(m)	3.0	2.2	---	---
Pensky-Martens Flash Point	°C	ASTM D7215*	52	50.3	---	---
Sulfur	ppm	ASTM D5185(m)	10	11	---	---
Initial Boiling Point	°C	ASTM D2887*	165	157	---	---
10% Distill Point	°C	ASTM D2887*	201	186	---	---
20% Distill Point	°C	ASTM D2887*	216	202	---	---
30% Distill Point	°C	ASTM D2887*	230	217	---	---
40% Distill Point	°C	ASTM D2887*	243	231	---	---
50% Distill Point	°C	ASTM D2887*	255	246	---	---
60% Distill Point	°C	ASTM D2887*	267	261	---	---
70% Distill Point	°C	ASTM D2887*	280	277	---	---
80% Distill Point	°C	ASTM D2887*	295	294	---	---
90% Distill Point	°C	ASTM D2887*	310	316	---	---
Final Boiling Point	°C	ASTM D2887*	341	352	---	---
API Gravity		ASTM D1298*	37.7	38	---	---
Cetane Index		ASTM D4737*	<40.0	47	---	---



Laboratory : WearCheck - C8-1175 Appleby Line, Burlington, ON L7L 5H9
Sample No. : WA0020612
Lab Number : 02625083
Unique Number : 5750202
Test Package : FUEL (Additional Tests: CC Flash, GC-PercFuel, PrtCount)

Generatrice Drummond
 243 rue des ARTISANS
 SAINT-GERMAIN-DE-GRANTHAM, QC
 CA J0C 1K0
 Contact: Valerie Poirier
 poiirivalerie@generatricedrummond.com
 T: (819)398-6811
 F: (819)398-7022

Received : 27 Mar 2024
 Tested : 01 Apr 2024
 Diagnosed : 01 Apr 2024 - Kevin Marson
 To discuss this sample report, contact Customer Service at 1-800-268-2131.
 Test denoted (*) outside scope of accreditation, (m) method modified, (e) tested at external lab.
 Validity of results and interpretation are based on the sample and information as supplied.