



FUEL REPORT

CORROSION	NORMAL
CONTAMINANTS	NORMAL
FUEL CONDITION	NORMAL

Area
System 84 - Evacuation Facilities

Machine Id
V-8401E LIFEBOAT #5

Component
Diesel Fuel

Fluid
No.2 DIESEL FUEL (ULTRALOW SULPHUR) (--- GAL)

RECOMMENDATION

Resample at the next service interval to monitor.

Test	UOM	Method	Limit/Abn	Current	History1	History2
Sample Number		Client Info		PP	WC	PP
Sample Date		Client Info		31 Mar 2024	28 Mar 2023	20 Jun 2022
Machine Age	hrs	Client Info		0	0	0
Sample Status				NORMAL	NORMAL	NORMAL

CORROSION

{not applicable}

Aluminum	ppm	ASTM D5185(m)	<0.1	0	0	0
Nickel	ppm	ASTM D5185(m)	<0.1	0	0	0
Lead	ppm	ASTM D5185(m)	<0.1	0	0	0
Vanadium	ppm	ASTM D5185(m)	<0.1	0	0	0
Iron	ppm	ASTM D5185(m)	<0.1	0	<1	<1

CONTAMINANTS

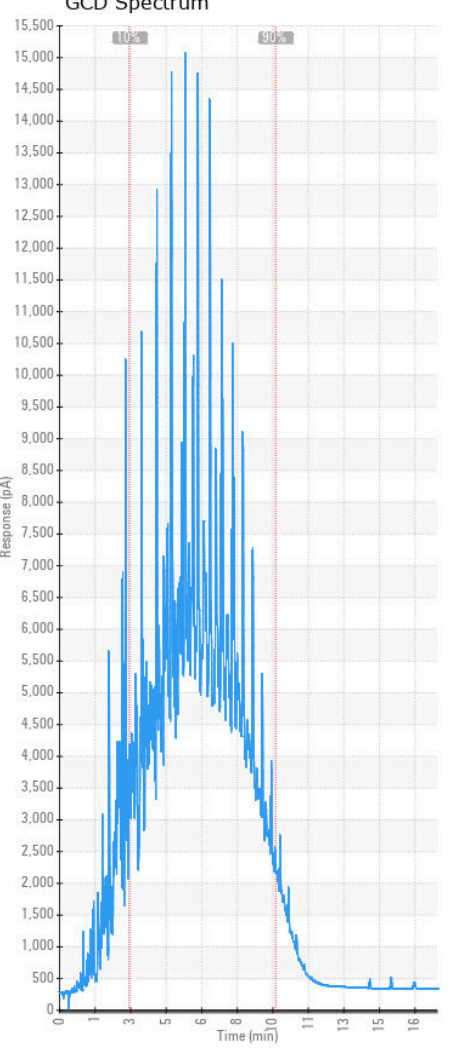
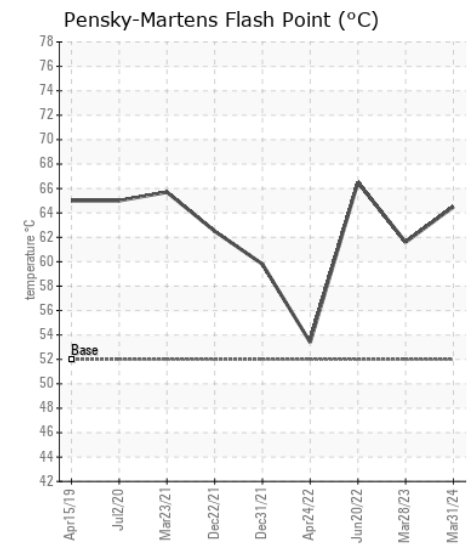
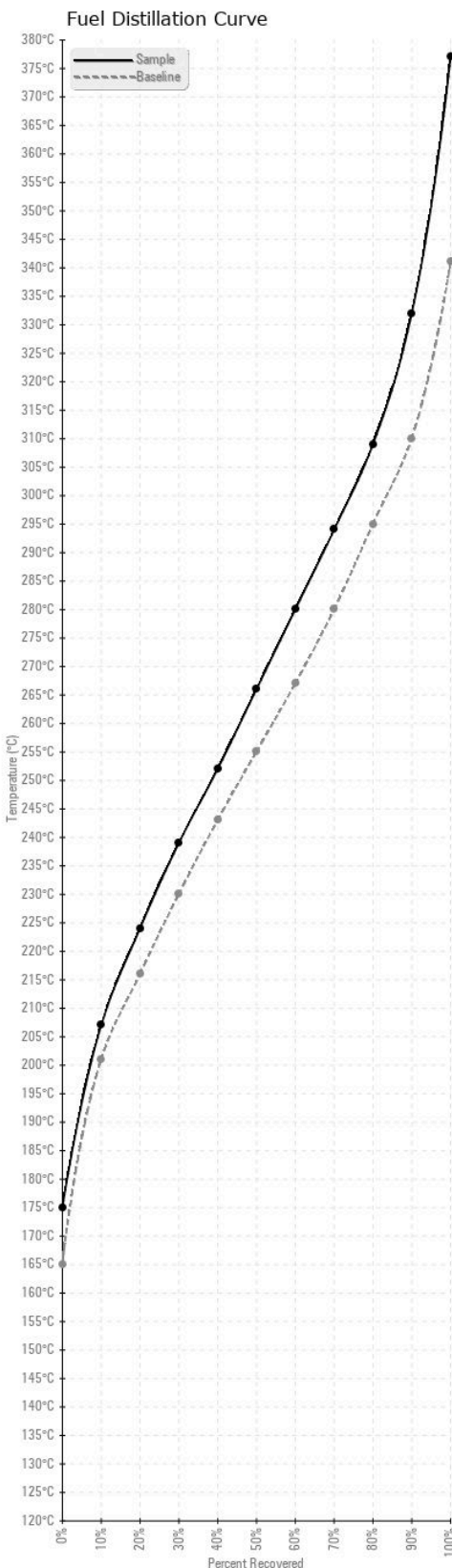
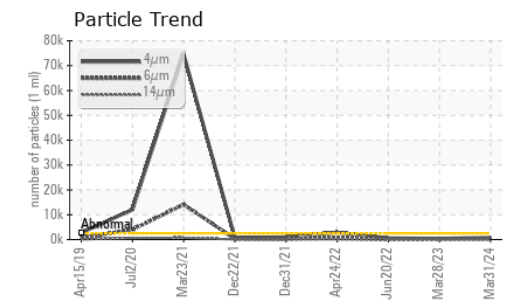
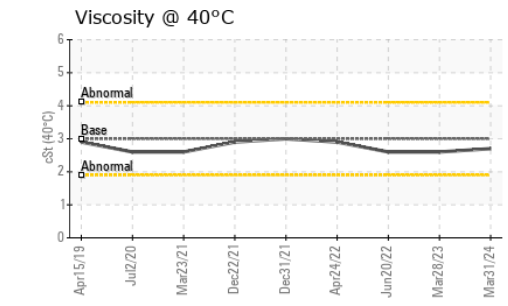
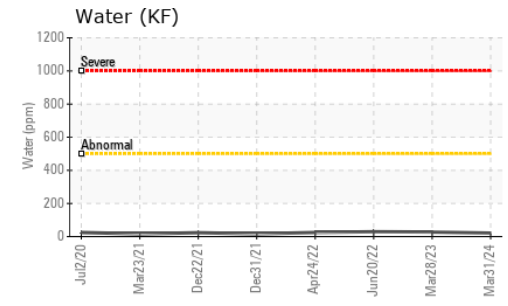
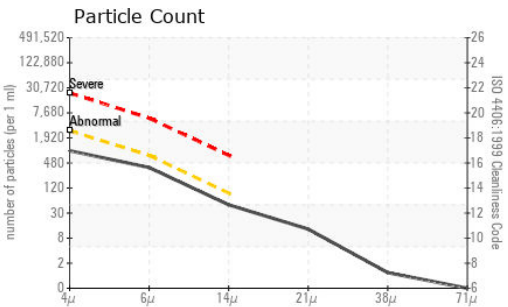
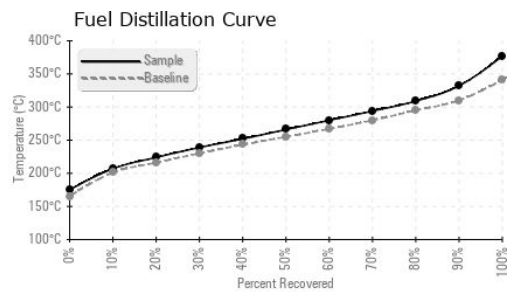
Insufficient sample was received to conduct all the routine laboratory tests. There is no bacteria or fungus (yeast and/or mold) present in the sample. The system cleanliness is acceptable for your target ISO 4406 cleanliness code. The water content is negligible.

Silicon	ppm	ASTM D5185(m)	<1.0	0	0	0
Sodium	ppm	ASTM D5185(m)	<0.1	0	0	0
Potassium	ppm	ASTM D5185(m)	<0.1	0	0	0
Water	%	ASTM D6304*	<0.05	0.002	0.003	0.003
ppm Water	ppm	ASTM D6304*	<500	21	27.6	29.3
Particles >4µm		ASTM D7647	>2500	829	448	608
Particles >6µm		ASTM D7647	>640	328	175	90
Particles >14µm		ASTM D7647	>80	42	33	7
Particles >21µm		ASTM D7647	>20	11	10	3
Particles >38µm		ASTM D7647	>4	1	1	0
Particles >71µm		ASTM D7647	>3	0	0	0
Oil Cleanliness		ISO 4406 (c)	>18/16/13	17/16/13	16/15/12	16/14/10
Sediment	%	ASTM D1796(e)*	<0.05	---	0.048	---
Bacteria	CFU/ml	ASTM D6469*	>=100000	0	0	0
Yeast	CFU/ml	ASTM D6469*	>=100000	0	100	0
Mold	Colonies	ASTM D6469*	MODER	NONE	NONE	NONE
Calcium	ppm	ASTM D5185(m)	<0.1	0	<1	0
Magnesium	ppm	ASTM D5185(m)	<0.1	0	<1	<1
Phosphorus	ppm	ASTM D5185(m)	<0.1	0	0	<1
Zinc	ppm	ASTM D5185(m)	<0.1	0	<1	<1

FUEL CONDITION

All laboratory tests indicate that this sample meets specifications for No.2 ultra-low-sulfur diesel fuel (US EPA/CGSB-3.517-3 type B).

Specific Gravity		ASTM D1298*	0.839	0.837	0.836	0.842
Fuel Color	text	Visual Screen*	Yllow	Yllow	Yllow	Yllow
Visc @ 40°C	cSt	ASTM D7279(m)	3.0	2.7	2.6	2.6
Pensky-Martens Flash Point	°C	ASTM D7215*	52	64.5	61.6	66.5
Cloud Point	°C	ASTM D2500*		---	-14	-17
Sulfur	ppm	ASTM D5185(m)	10	7	8	10
Initial Boiling Point	°C	ASTM D2887*	165	175	173	163
10% Distill Point	°C	ASTM D2887*	201	207	204	206
20% Distill Point	°C	ASTM D2887*	216	224	221	223
30% Distill Point	°C	ASTM D2887*	230	239	236	237
40% Distill Point	°C	ASTM D2887*	243	252	250	250
50% Distill Point	°C	ASTM D2887*	255	266	263	261
60% Distill Point	°C	ASTM D2887*	267	280	277	274
70% Distill Point	°C	ASTM D2887*	280	294	290	288
80% Distill Point	°C	ASTM D2887*	295	309	306	304
90% Distill Point	°C	ASTM D2887*	310	332	328	324
Final Boiling Point	°C	ASTM D2887*	341	377	373	346
API Gravity		ASTM D1298*	37.7	37	37	36
Cetane Index		ASTM D4737*	<40.0	51	50	48



Laboratory : WearCheck - C8-1175 Appleby Line, Burlington, ON L7L 5H9
Sample No. : PP
Lab Number : 02625820
Unique Number : 5750939
Test Package : FUEL (Additional Tests: Bacteria, CC Flash, CldPt, PrtCount, Sediment)

HIBERNIA MGMT & DEVELOPMENT CO. LTD
 SUITE 1000,, 100 NEW GOWER STREET
 ST.JOHN'S, NL
 CA A1C 6K3
 Contact: Sam Nash
 samantha.m.nash@exxonmobil.com
 T:
 F: (709)722-3766

To discuss this sample report, contact Customer Service at 1-800-268-2131.
 Test denoted (*) outside scope of accreditation, (m) method modified, (e) tested at external lab.
 Validity of results and interpretation are based on the sample and information as supplied.