



OIL ANALYSIS REPORT

WEAR	NORMAL
CONTAMINANTS	NORMAL
OIL CONDITION	NORMAL



Machine Id
PH652.010.10 (S/N 2WB17760)
Component
Port Auxiliary Engine
Fluid
PETRO CANADA DURON HP 15W40 (68 LTR)

RECOMMENDATION

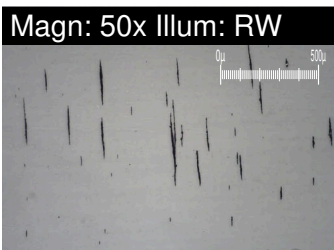
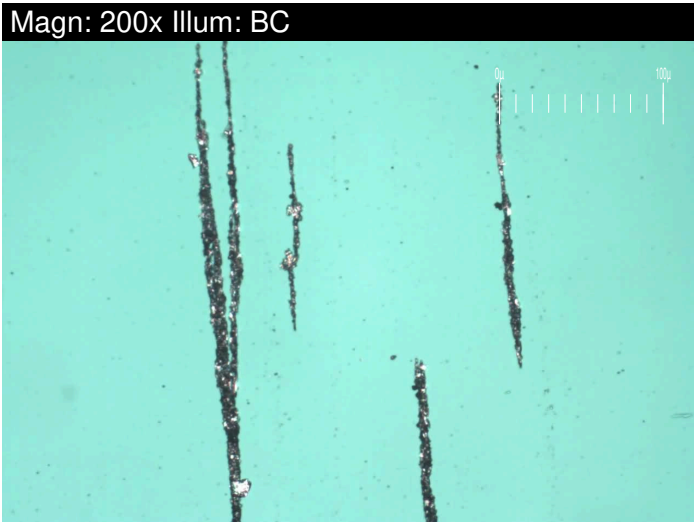
Resample at the next service interval to monitor.

WEAR

All component wear rates are normal. The ferrography results are normal indicating no abnormal wear in the system.

Test	UOM	Method	Limit/Abn	Current	History1	History2
Sample Number		Client Info		WC0873832	WC0797078	WC0797086
Sample Date		Client Info		09 Mar 2024	15 Sep 2023	16 Apr 2023
Machine Age	hrs	Client Info		23606	23211	22918
Oil Age	hrs	Client Info		194	300	407
Filter Age	hrs	Client Info		194	300	407
Oil Changed		Client Info		N/A	Not Changd	Not Changd
Filter Changed		Client Info		Changed	Not Changd	Not Changd
Sample Status				NORMAL	NORMAL	MARGINAL

PQ		ASTM D8184*		0	0	0
Iron	ppm	ASTM D5185(m)	>85	3	2	6
Chromium	ppm	ASTM D5185(m)	>4	0	0	0
Nickel	ppm	ASTM D5185(m)	>4	0	0	0
Titanium	ppm	ASTM D5185(m)	>2	0	0	0
Silver	ppm	ASTM D5185(m)	>2	0	<1	0
Aluminum	ppm	ASTM D5185(m)	>15	<1	<1	1
Lead	ppm	ASTM D5185(m)	>15	0	<1	3
Copper	ppm	ASTM D5185(m)	>250	1	2	3
Tin	ppm	ASTM D5185(m)	>4	0	0	<1
Vanadium	ppm	ASTM D5185(m)		0	0	0
White Metal	scalar	Visual*	NONE	NONE	---	NONE
Yellow Metal	scalar	Visual*	NONE	NONE	---	NONE
Large Particles		DR-Ferr*		2.3	9.2	6.4
Small Particles		DR-Ferr*		0.0	7.8	3.2
Total Particles		DR-Ferr*	>---	2.3	17	9.6
Large Particles Percentage	%	DR-Ferr*		100	8.2	33.3
Severity Index		DR-Ferr*		5	13	20
Ferrous Rubbing	Scale 0-10	ASTM D7684*		3	3	3
Ferrous Sliding	Scale 0-10	ASTM D7684*				
Ferrous Cutting	Scale 0-10	ASTM D7684*				
Ferrous Rolling	Scale 0-10	ASTM D7684*		1	1	1
Ferrous Break-in	Scale 0-10	ASTM D7684*				
Ferrous Spheres	Scale 0-10	ASTM D7684*				
Ferrous Black Oxides	Scale 0-10	ASTM D7684*		1		
Ferrous Red Oxides	Scale 0-10	ASTM D7684*				
Ferrous Corrosive	Scale 0-10	ASTM D7684*			1	1
Ferrous Other	Scale 0-10	ASTM D7684*				
Nonferrous Rubbing	Scale 0-10	ASTM D7684*				
Nonferrous Sliding	Scale 0-10	ASTM D7684*				
Nonferrous Cutting	Scale 0-10	ASTM D7684*				
Nonferrous Rolling	Scale 0-10	ASTM D7684*				
Nonferrous Other	Scale 0-10	ASTM D7684*				



CONTAMINANTS

There is no indication of any contamination in the oil.

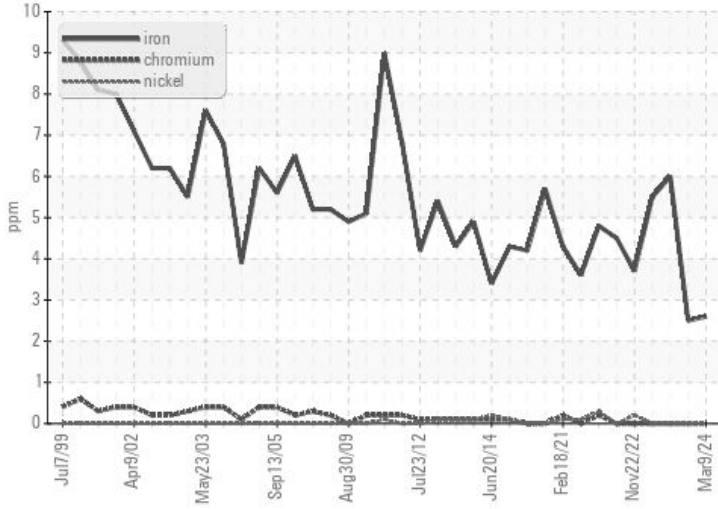
Silicon	ppm	ASTM D5185(m)	>35	<1	2	2
Potassium	ppm	ASTM D5185(m)	>20	0	0	<1
Fuel		WC Method	>4.0	<1.0	<1.0	▲ 3.2
Water		WC Method	>0.1	NEG	NEG	NEG
Glycol		WC Method		NEG	NEG	NEG
Soot %	%	ASTM D7844*		0	0	0
Nitration	Abs/cm	ASTM D7624*	>20	5.6	5.5	6.4
Sulfation	Abs/.1mm	ASTM D7415*	>30	18.7	18.3	19.1
Silt	scalar	Visual*	NONE	NONE	---	NONE
Debris	scalar	Visual*	NONE	VLITE	---	NONE
Sand/Dirt	scalar	Visual*	NONE	NONE	---	VLITE
Appearance	scalar	Visual*	NORML	NORML	---	NORML
Odor	scalar	Visual*	NORML	NORML	NORML	NORML
Emulsified Water	scalar	Visual*	>0.1	NEG	NEG	NEG
Carbonaceous Material	Scale 0-10	ASTM D7684*				
Sand/Dirt	Scale 0-10	ASTM D7684*		1	1	1
Fibres	Scale 0-10	ASTM D7684*				
Spheres	Scale 0-10	ASTM D7684*				
Other	Scale 0-10	ASTM D7684*		1	1	2

OIL CONDITION

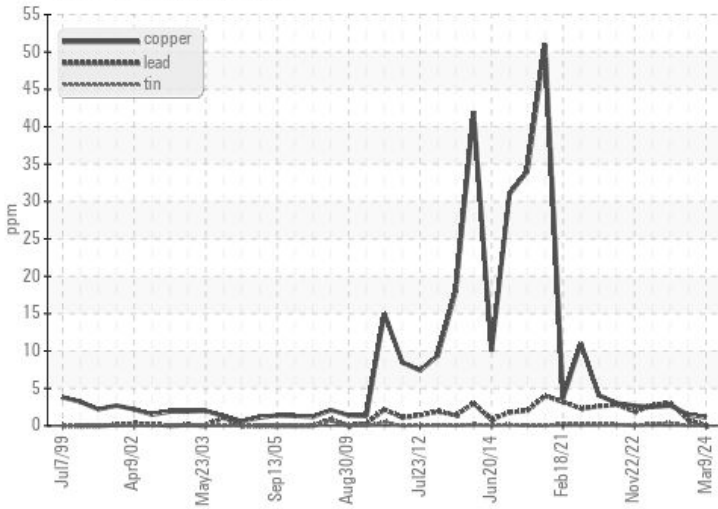
The BN result indicates that there is suitable alkalinity remaining in the oil. The condition of the oil is suitable for further service.

Sodium	ppm	ASTM D5185(m)		1	1	2
Boron	ppm	ASTM D5185(m)	0	2	2	1
Barium	ppm	ASTM D5185(m)	0	0	<1	0
Molybdenum	ppm	ASTM D5185(m)	60	59	60	58
Manganese	ppm	ASTM D5185(m)	0	0	0	<1
Magnesium	ppm	ASTM D5185(m)	1010	996	980	955
Calcium	ppm	ASTM D5185(m)	1070	1051	1050	1126
Phosphorus	ppm	ASTM D5185(m)	1150	1007	1035	1092
Zinc	ppm	ASTM D5185(m)	1270	1174	1183	1223
Sulfur	ppm	ASTM D5185(m)	2060	2687	2598	2629
Oxidation	Abs/.1mm	ASTM D7414*	>25	14.4	13.6	14.9
Base Number (BN)	mg KOH/g	ASTM D2896*	9.8	9.40	8.97	9.00
Visc @ 40°C	cSt	ASTM D7279(m)	118.2	107	---	---
Visc @ 100°C	cSt	ASTM D7279(m)	15.6	14.2	13.8	12.8
Viscosity Index (VI)	Scale	ASTM D2270*	139	134	---	---
Lubricant Degradation	Scale 0-10	ASTM D7684*				

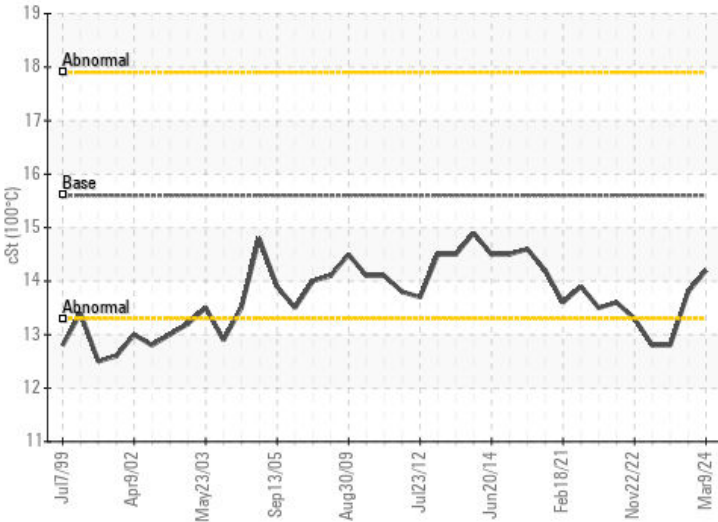
Ferrous Alloys



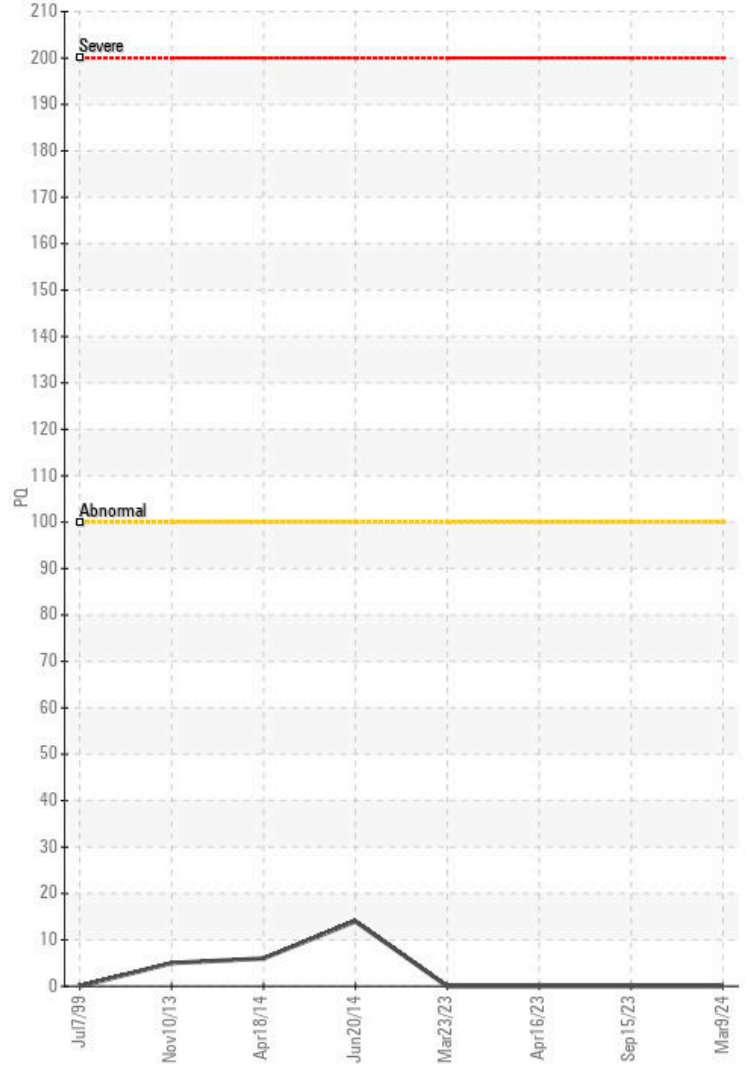
Non-ferrous Metals



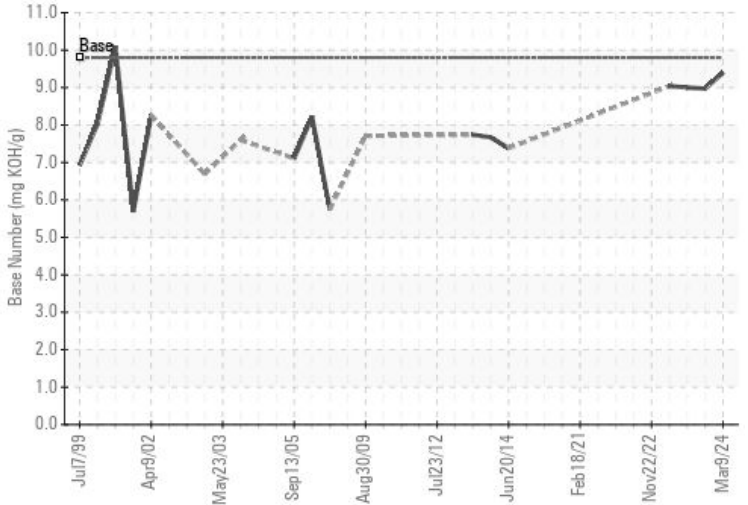
Viscosity @ 100°C



PQ



Base Number



Laboratory : WearCheck - C8-1175 Appleby Line, Burlington, ON L7L 5H9
Sample No. : WC0873832
Lab Number : 02627107
Unique Number : 5760239
Test Package : MAR 3 (Additional Tests: KV40, VI, Visual)

CANSHIP UGLAND LTD.
 PLACENTIA HOPE, P.O. BOX 8274, STN. A
 ST. JOHN'S, NL
 CA A1B 3N4
 Contact: Brian Bishop
 bbishop@canship.com
 T: (709)782-7341
 F: (709)782-0225

To discuss this sample report, contact Customer Service at 1-800-268-2131.
 Test denoted (*) outside scope of accreditation, (m) method modified, (e) tested at external lab.
 Validity of results and interpretation are based on the sample and information as supplied.

This page left intentionally blank