

Area
[50561]
 Machine Id
SUMMIT CENTRE

Component
Diesel Fuel
 Fluid
No.2 DIESEL FUEL (LOW-SULPHUR) (--- GAL)

RECOMMENDATION

Laboratory test indicate that this fuel is suitable for use and meets all test requirements. We advise that you filter this fluid before use. We recommend you service the filters on this component. We recommend an early resample to monitor this condition.

Test	UOM	Method	Limit/Abn	Current	History1	History2
Sample Number		Client Info		CU0022649	---	---
Sample Date		Client Info		17 Apr 2024	---	---
Machine Age	hrs	Client Info		0	---	---
Sample Status				ABNORMAL	---	---

CORROSION

{not applicable}

Aluminum	ppm	ASTM D5185(m)	<0.1	0	---	---
Nickel	ppm	ASTM D5185(m)	<0.1	0	---	---
Lead	ppm	ASTM D5185(m)	<0.1	0	---	---
Vanadium	ppm	ASTM D5185(m)	<0.1	0	---	---
Iron	ppm	ASTM D5185(m)	<0.1	0	---	---

CONTAMINANTS

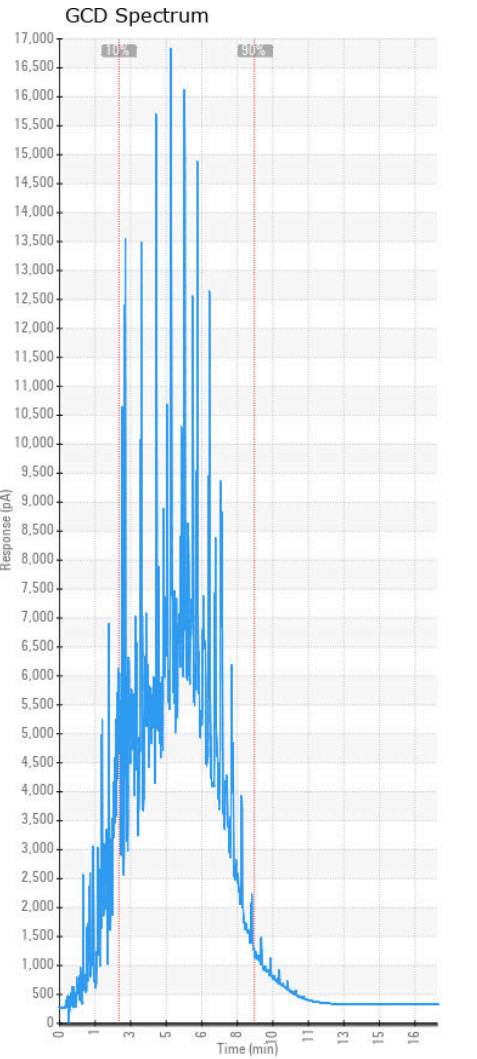
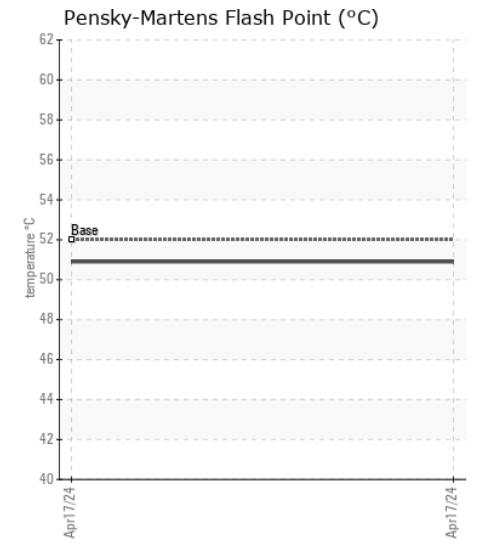
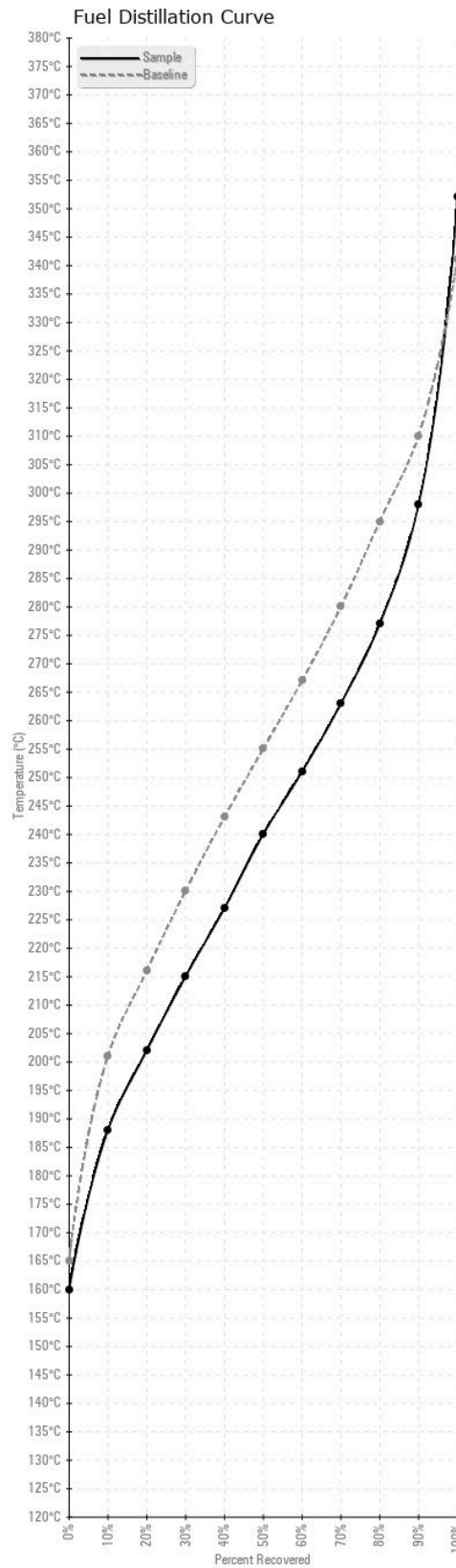
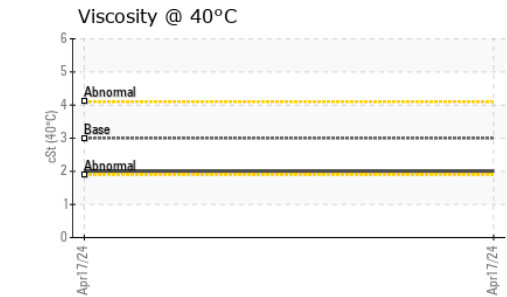
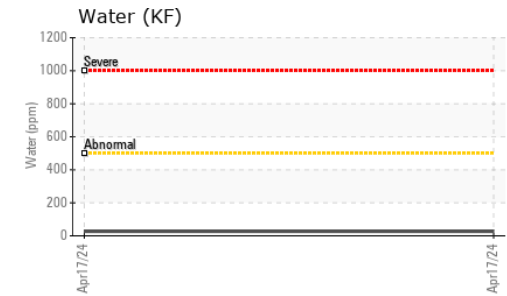
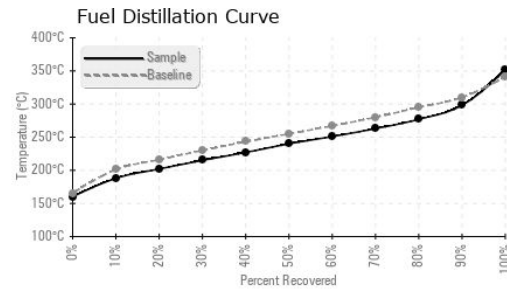
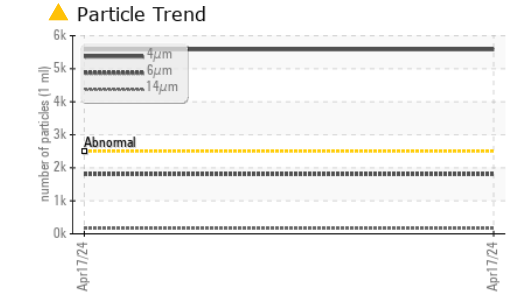
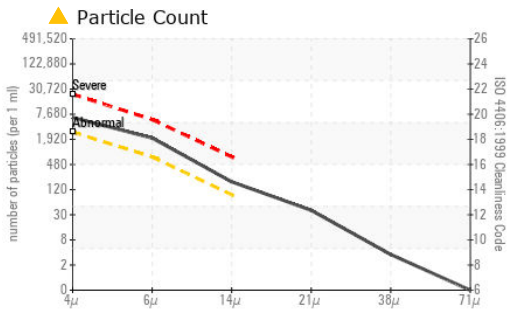
There is a moderate amount of silt (particulates < 14 microns in size) present in the fuel. The water content is negligible.

Silicon	ppm	ASTM D5185(m)	<1.0	0	---	---
Sodium	ppm	ASTM D5185(m)	<0.1	<1	---	---
Potassium	ppm	ASTM D5185(m)	<0.1	0	---	---
Water	%	ASTM D6304*	<0.05	0.003	---	---
ppm Water	ppm	ASTM D6304*	<500	27	---	---
Particles >4µm		ASTM D7647	>2500	▲ 5582	---	---
Particles >6µm		ASTM D7647	>640	▲ 1805	---	---
Particles >14µm		ASTM D7647	>80	▲ 163	---	---
Particles >21µm		ASTM D7647	>20	● 34	---	---
Particles >38µm		ASTM D7647	>4	3	---	---
Particles >71µm		ASTM D7647	>3	0	---	---
Oil Cleanliness		ISO 4406 (c)	>18/16/13	▲ 20/18/15	---	---
Calcium	ppm	ASTM D5185(m)	<0.1	0	---	---
Magnesium	ppm	ASTM D5185(m)	<0.1	0	---	---
Phosphorus	ppm	ASTM D5185(m)	<0.1	<1	---	---
Zinc	ppm	ASTM D5185(m)	<0.1	<1	---	---

FUEL CONDITION

All laboratory tests indicate that this sample meets specifications for No.2 diesel fuel, low sulfur (US EPA/CGSB-3.517-3 type B). The fuel is still serviceable provided that the contaminant(s) can be reduced to acceptable levels.

Specific Gravity		ASTM D1298*	0.839	0.828	---	---
Fuel Color	text	Visual Screen*	Yellow	Yellow	---	---
Visc @ 40°C	cSt	ASTM D7279(m)	3.0	2	---	---
Pensky-Martens Flash Point	°C	ASTM D7215*	52	50.9	---	---
Sulfur	ppm	ASTM D5185(m)	250	37	---	---
Initial Boiling Point	°C	ASTM D2887*	165	160	---	---
10% Distill Point	°C	ASTM D2887*	201	188	---	---
20% Distill Point	°C	ASTM D2887*	216	202	---	---
30% Distill Point	°C	ASTM D2887*	230	215	---	---
40% Distill Point	°C	ASTM D2887*	243	227	---	---
50% Distill Point	°C	ASTM D2887*	255	240	---	---
60% Distill Point	°C	ASTM D2887*	267	251	---	---
70% Distill Point	°C	ASTM D2887*	280	263	---	---
80% Distill Point	°C	ASTM D2887*	295	277	---	---
90% Distill Point	°C	ASTM D2887*	310	298	---	---
Final Boiling Point	°C	ASTM D2887*	341	352	---	---
API Gravity		ASTM D1298*	37.7	39	---	---
Cetane Index		ASTM D4737*	<40.0	47	---	---



ISO 17025:2017
Accredited
Laboratory

Laboratory : WearCheck - C8-1175 Appleby Line, Burlington, ON L7L 5H9

Sample No. : CU0022649

Lab Number : 02630020

Unique Number : 5763152

Test Package : FUEL (Additional Tests: CC Flash, PrtCount)

Received : 18 Apr 2024

Tested : 22 Apr 2024

Diagnosed : 22 Apr 2024 - Kevin Marson

CUMMINS EASTERN CANADA INC.

122 CLYDE AVENUE

MOUNT PEARL, NL

CA A1N 4S3

Contact: DARRYL CAREY

DARRYL.CAREY@CUMMINS.COM

T: (709)747-1135

F: (709)747-1084

To discuss this sample report, contact Customer Service at 1-800-268-2131.

Test denoted (*) outside scope of accreditation, (m) method modified, (e) tested at external lab.

Validity of results and interpretation are based on the sample and information as supplied.