



FUEL REPORT

CORROSION	NORMAL
CONTAMINANTS	ABNORMAL
FUEL CONDITION	NORMAL

Area

[367073]

Machine Id

NO UNIT WC0886637

Component

Diesel Fuel

Fluid

No.2 DIESEL FUEL (ULTRALOW SULPHUR) (--- GAL)

RECOMMENDATION

We advise that you check for the source of water entry. We advise that you filter this fluid before use. We advise that you follow the water drain-off procedure for this component. We recommend you service the filters on this component. We recommend an early resample to monitor this condition.

CORROSION

{not applicable}

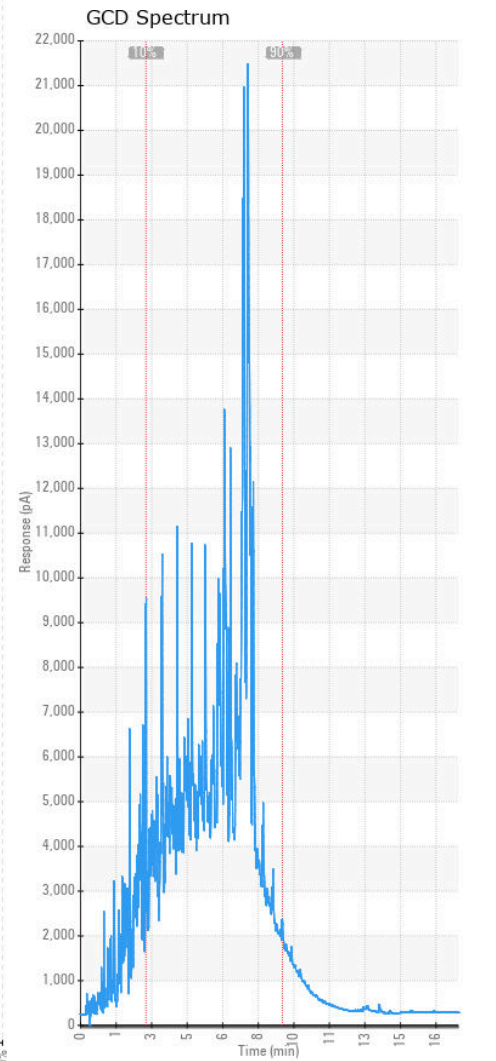
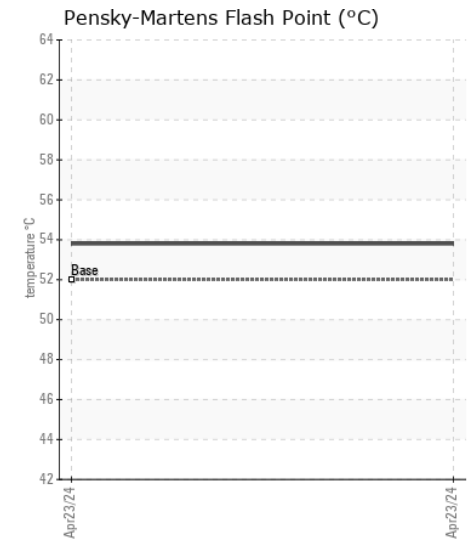
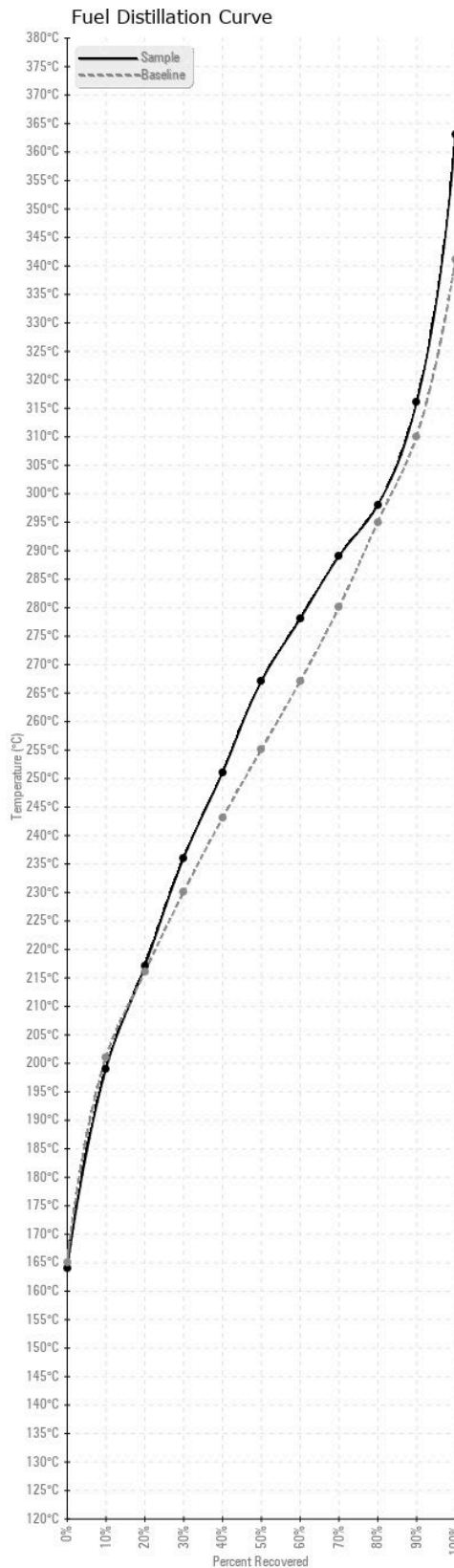
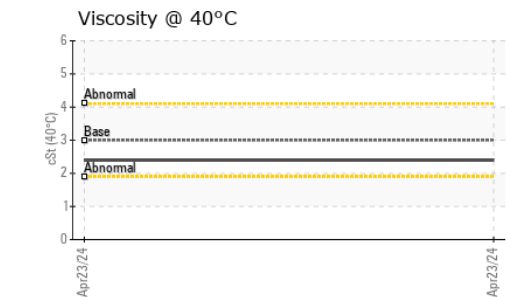
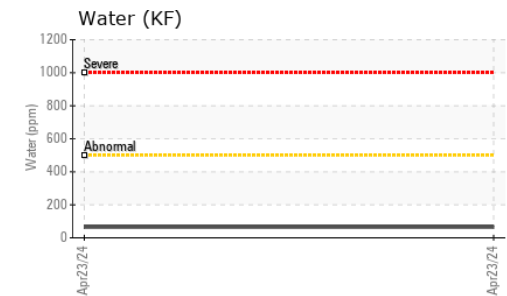
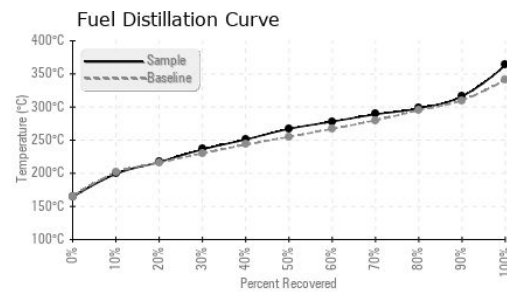
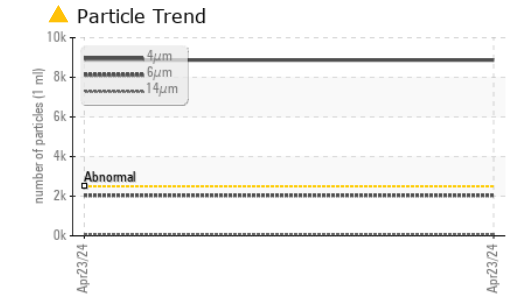
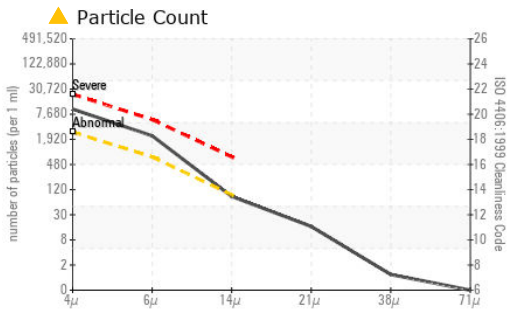
CONTAMINANTS

There is a moderate amount of silt (particulates < 14 microns in size) present in the fuel. Free water present. There is no bacteria or fungus (yeast and/or mold) present in the sample. Small amount of bacteria present. No reportable mold present. No reportable yeast present.

FUEL CONDITION

The fuel is still serviceable provided that the contaminant(s) can be reduced to acceptable levels.

Test	UOM	Method	Limit/Abn	Current	History1	History2
Sample Number		Client Info		WC0886637	---	---
Sample Date		Client Info		23 Apr 2024	---	---
Machine Age	hrs	Client Info		0	---	---
Sample Status				ABNORMAL	---	---
Aluminum	ppm	ASTM D5185(m)	<0.1	0	---	---
Nickel	ppm	ASTM D5185(m)	<0.1	0	---	---
Lead	ppm	ASTM D5185(m)	<0.1	0	---	---
Vanadium	ppm	ASTM D5185(m)	<0.1	0	---	---
Iron	ppm	ASTM D5185(m)	<0.1	0	---	---
Silicon	ppm	ASTM D5185(m)	<1.0	0	---	---
Sodium	ppm	ASTM D5185(m)	<0.1	<1	---	---
Potassium	ppm	ASTM D5185(m)	<0.1	0	---	---
Water	%	ASTM D6304*	<0.05	0.006	---	---
ppm Water	ppm	ASTM D6304*	<500	65	---	---
Particles >4µm		ASTM D7647	>2500	8868	---	---
Particles >6µm		ASTM D7647	>640	2041	---	---
Particles >14µm		ASTM D7647	>80	73	---	---
Particles >21µm		ASTM D7647	>20	14	---	---
Particles >38µm		ASTM D7647	>4	1	---	---
Particles >71µm		ASTM D7647	>3	0	---	---
Oil Cleanliness		ISO 4406 (c)	>18/16/13	20/18/13	---	---
Bacteria	CFU/ml	ASTM D6469*	>=100000	100	---	---
Yeast	CFU/ml	ASTM D6469*	>=100000	0	---	---
Mold	Colonies	ASTM D6469*	MODER	NONE	---	---
Calcium	ppm	ASTM D5185(m)	<0.1	0	---	---
Magnesium	ppm	ASTM D5185(m)	<0.1	0	---	---
Phosphorus	ppm	ASTM D5185(m)	<0.1	0	---	---
Zinc	ppm	ASTM D5185(m)	<0.1	0	---	---
Specific Gravity		ASTM D1298*	0.839	0.819	---	---
Fuel Color	text	Visual Screen*	Yllow	Yllow	---	---
Visc @ 40°C	cSt	ASTM D7279(m)	3.0	2.4	---	---
Pensky-Martens Flash Point	°C	ASTM D7215*	52	53.8	---	---
Sulfur	ppm	ASTM D5185(m)	10	5	---	---
Initial Boiling Point	°C	ASTM D2887*	165	164	---	---
10% Distill Point	°C	ASTM D2887*	201	199	---	---
20% Distill Point	°C	ASTM D2887*	216	217	---	---
30% Distill Point	°C	ASTM D2887*	230	236	---	---
40% Distill Point	°C	ASTM D2887*	243	251	---	---
50% Distill Point	°C	ASTM D2887*	255	267	---	---
60% Distill Point	°C	ASTM D2887*	267	278	---	---
70% Distill Point	°C	ASTM D2887*	280	289	---	---
80% Distill Point	°C	ASTM D2887*	295	298	---	---
90% Distill Point	°C	ASTM D2887*	310	316	---	---
Final Boiling Point	°C	ASTM D2887*	341	363	---	---
API Gravity		ASTM D1298*	37.7	41	---	---
Cetane Index		ASTM D4737*	<40.0	58	---	---



Laboratory : WearCheck - C8-1175 Appleby Line, Burlington, ON L7L 5H9
Sample No. : WC0886637
Lab Number : 02631243
Unique Number : 5772396
Test Package : FUEL (Additional Tests: Bacteria, CC Flash, PrtCount)

Received : 24 Apr 2024
Tested : 30 Apr 2024
Diagnosed : 30 Apr 2024 - Kevin Marson

SURGENOR TRUCK
 1571 LIVERPOOL COURT
 OTTAWA, ON
 CA K1B 4L1
 Contact: Clinton Stevens
 clinton.stevens@surgenor.com
 T: (613)745-0024
 F: (613)745-8690

To discuss this sample report, contact Customer Service at 1-800-268-2131.
 Test denoted (*) outside scope of accreditation, (m) method modified, (e) tested at external lab.
 Validity of results and interpretation are based on the sample and information as supplied.