



# COOLANT REPORT

CORROSION	<b>ABNORMAL</b>
CONTAMINANTS	<b>NORMAL</b>
COOLANT CONDITION	<b>NORMAL</b>

Machine Id  
**KOHLER Clover Facility**  
 Component  
**Coolant**  
 Fluid  
**EXTENDED LIFE COOLANT (--- GAL)**

## RECOMMENDATION

We recommend that you drain the system and refill with a 50/50 long-life coolant/water mixture. We recommend an early resample to monitor this condition.

Test	UOM	Method	Limit/Abn	Current	History1	History2
Sample Number		Client Info		<b>WC0870010</b>	---	---
Sample Date		Client Info		<b>12 Apr 2024</b>	---	---
Machine Age	hrs	Client Info		<b>0</b>	---	---
Oil Age	hrs	Client Info		<b>0</b>	---	---
Oil Changed		Client Info		<b>N/A</b>	---	---
Sample Status				<b>ABNORMAL</b>	---	---

## CORROSION

Lead ppm levels are abnormal. The high metal levels indicate corrosion in the system.

Iron	ppm	ASTM D5185(m)	>15	<b>0</b>	---	---
Aluminum	ppm	ASTM D5185(m)	>10	<b>&lt;1</b>	---	---
Copper	ppm	ASTM D5185(m)	>10	<b>&lt;1</b>	---	---
Lead	ppm	ASTM D5185(m)	>10	<b>▲ 19</b>	---	---
Tin	ppm	ASTM D5185(m)	>10	<b>0</b>	---	---
Silver	ppm	ASTM D5185(m)	>10	<b>0</b>	---	---
Zinc	ppm	ASTM D5185(m)	>10	<b>1</b>	---	---

## CONTAMINANTS

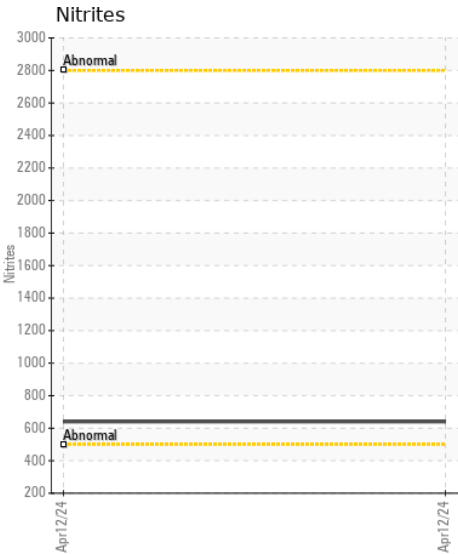
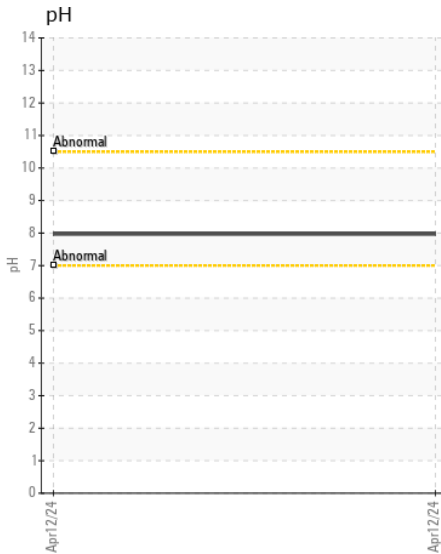
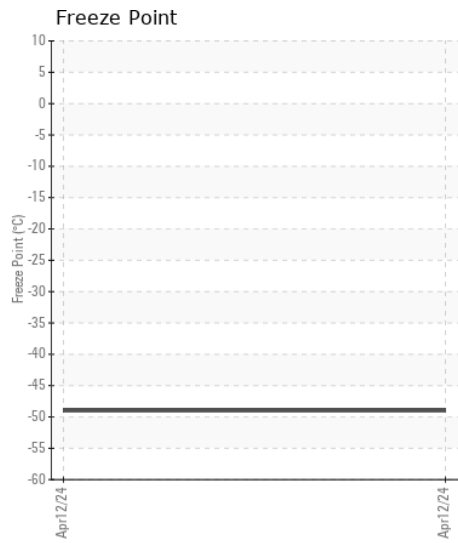
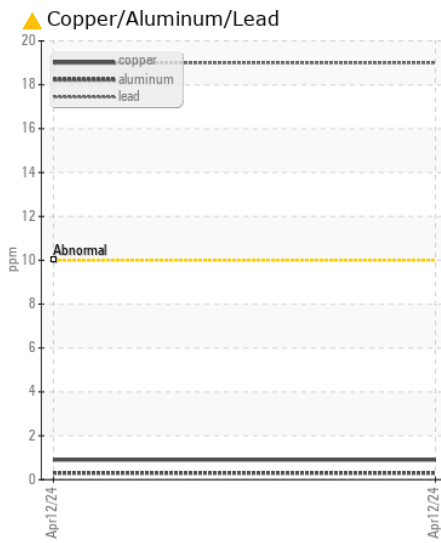
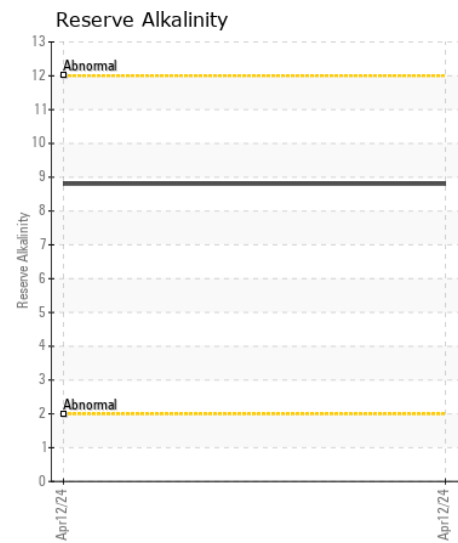
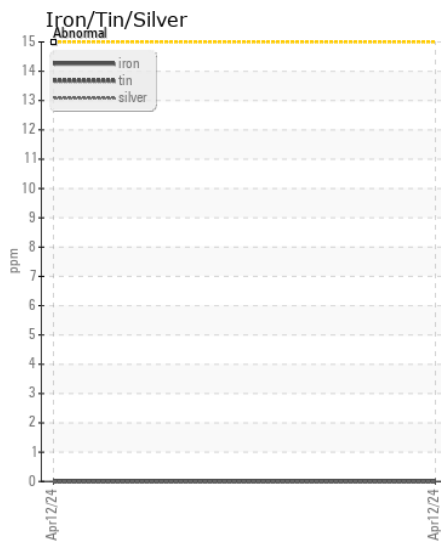
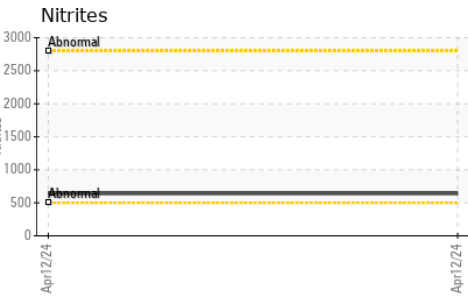
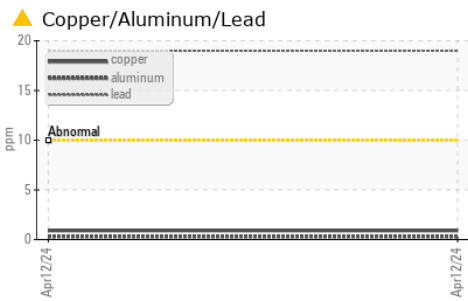
There is no indication of any contamination in the coolant.

Calcium	ppm	ASTM D5185(m)	>100	<b>4</b>	---	---
Magnesium	ppm	ASTM D5185(m)	>40	<b>1</b>	---	---
Appearance	scalar	Visual*	NORML	<b>NORML</b>	---	---
Odor	scalar	Visual*	NORML	<b>NORML</b>	---	---
Coolant Appearance		Visual*	Clear	<b>Clear</b>	---	---

## COOLANT CONDITION

The nitrite level is acceptable. The pH level of this fluid is within the acceptable limits. The reserve alkalinity of this fluid is acceptable.

Boiling Point	°C	WC Method*		<b>109</b>	---	---
Specific Gravity		ASTM D1298*		<b>1.079</b>	---	---
pH	Scale 0-14	ASTM D1287*	9.0	<b>7.97</b>	---	---
Nitrites	ppm	Alcan Test Kit*		<b>640</b>	---	---
Reserve Alkalinity	Scale 0-20	ASTM D1121*		<b>8.8</b>	---	---
Percentage Glycol	%	ASTM D3321*	50	<b>59.8</b>	---	---
Freezing Point	°C	ASTM D3321*	-40	<b>-49</b>	---	---
Carboxylate				<b>---</b>	---	---
Silicon	ppm	ASTM D5185(m)		<b>10</b>	---	---
Phosphorus	ppm	ASTM D5185(m)		<b>19</b>	---	---
Boron	ppm	ASTM D5185(m)		<b>870</b>	---	---
Molybdenum	ppm	ASTM D5185(m)		<b>&lt;1</b>	---	---
Sodium	ppm	ASTM D5185(m)		<b>6858</b>	---	---
Potassium	ppm	ASTM D5185(m)		<b>756</b>	---	---
Coolant Color		Visual*	Orange/R	<b>Pink</b>	---	---



**Laboratory** : WearCheck - C8-1175 Appleby Line, Burlington, ON L7L 5H9  
**Sample No.** : WC0870010 **Received** : 30 Apr 2024  
**Lab Number** : 02632424 **Tested** : 02 May 2024  
**Unique Number** : 5773577 **Diagnosed** : 02 May 2024 - Kevin Marson  
**Test Package** : COOL ( Additional Tests: GlycolType )

**CF Industrial Products Inc.**  
 1928 Road 3 East  
 Kingsville, ON  
 CA N9Y 2E5  
 Contact: Dan Hammond  
 danh@cfgroups.com  
 T: (519)564-2241  
 F: (519)322-2916

To discuss this sample report, contact Customer Service at 1-800-268-2131.  
 Test denoted (\*) outside scope of accreditation, (m) method modified, (e) tested at external lab.  
 Validity of results and interpretation are based on the sample and information as supplied.