

Machine Id
BELL CORNWALL
 Component
Diesel Fuel
 Fluid
No.2 DIESEL FUEL (LOW-SULPHUR) (--- GAL)

RECOMMENDATION

Laboratory test indicate that this fuel is suitable for use and meets all test requirements. Resample at the next service interval to monitor.

Test	UOM	Method	Limit/Abn	Current	History1	History2
Sample Number		Client Info		CU0021707	---	---
Sample Date		Client Info		01 May 2024	---	---
Machine Age	hrs	Client Info		0	---	---
Sample Status				NORMAL	---	---

CORROSION

{not applicable}

Aluminum	ppm	ASTM D5185(m)	<0.1	0	---	---
Nickel	ppm	ASTM D5185(m)	<0.1	0	---	---
Lead	ppm	ASTM D5185(m)	<0.1	<1	---	---
Vanadium	ppm	ASTM D5185(m)	<0.1	0	---	---
Iron	ppm	ASTM D5185(m)	<0.1	0	---	---

CONTAMINANTS

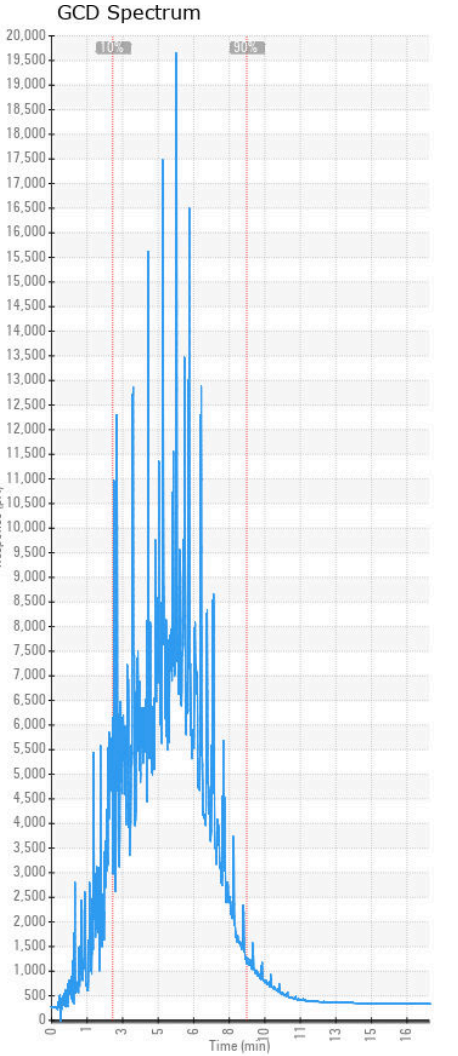
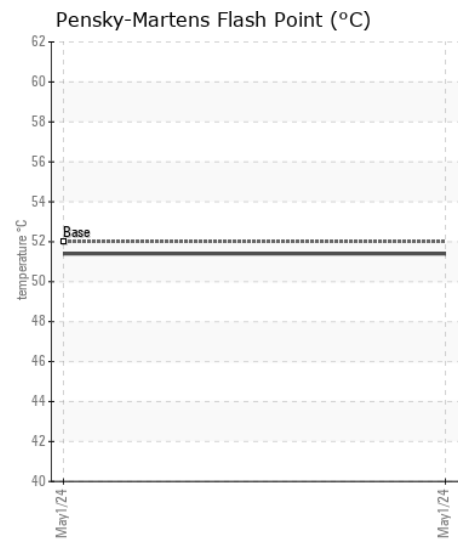
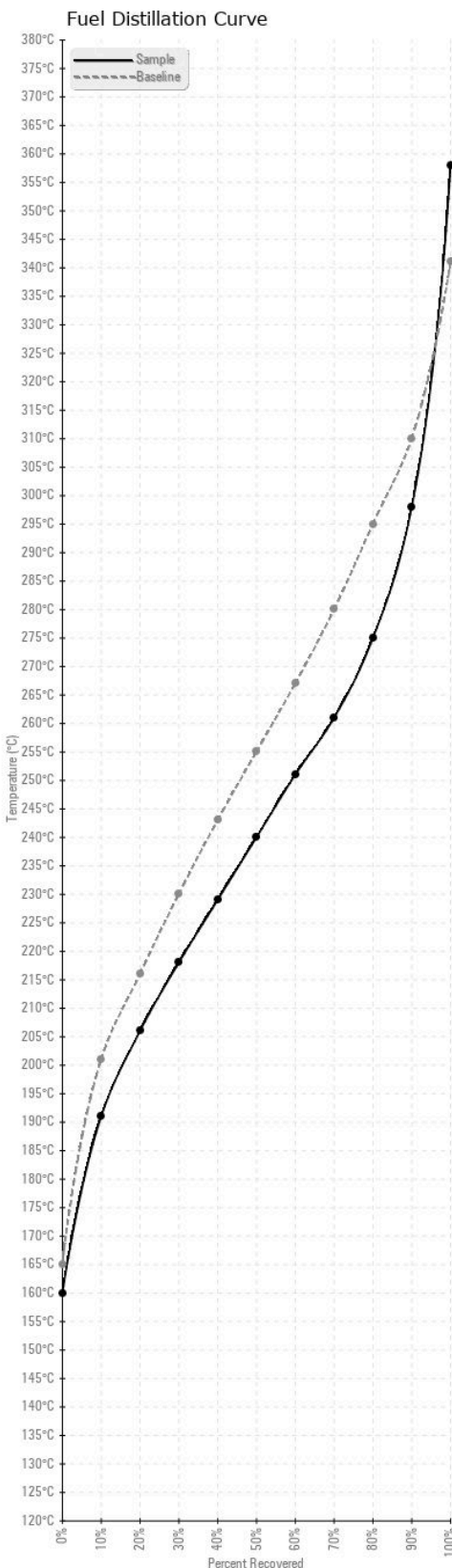
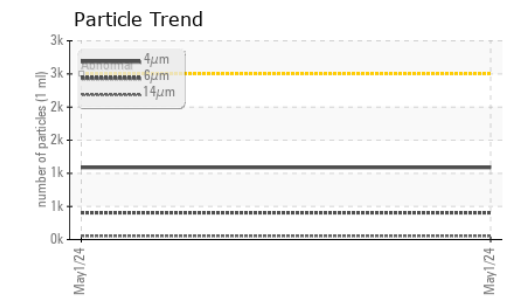
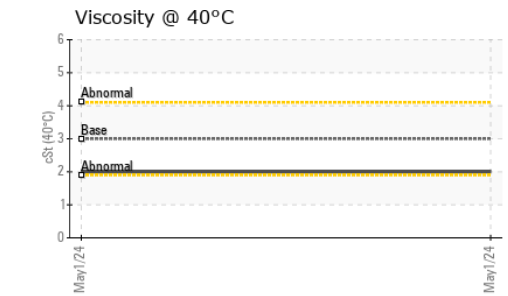
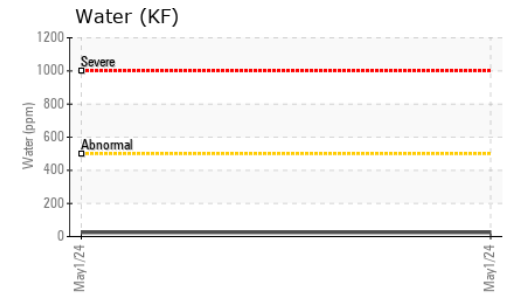
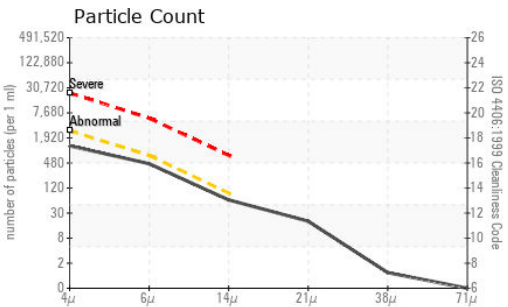
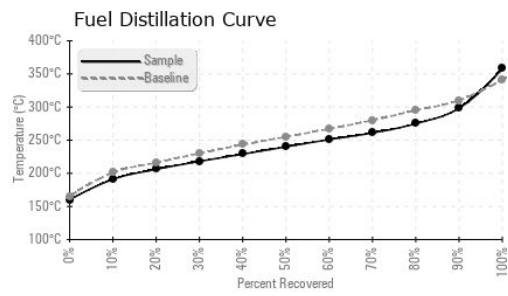
The system cleanliness is acceptable for your target ISO 4406 cleanliness code. The water content is negligible. There is no indication of any contamination in the diesel fuel.

Silicon	ppm	ASTM D5185(m)	<1.0	0	---	---
Sodium	ppm	ASTM D5185(m)	<0.1	<1	---	---
Potassium	ppm	ASTM D5185(m)	<0.1	0	---	---
Water	%	ASTM D6304*	<0.05	0.002	---	---
ppm Water	ppm	ASTM D6304*	<500	25	---	---
Particles >4µm		ASTM D7647	>2500	1088	---	---
Particles >6µm		ASTM D7647	>640	405	---	---
Particles >14µm		ASTM D7647	>80	55	---	---
Particles >21µm		ASTM D7647	>20	17	---	---
Particles >38µm		ASTM D7647	>4	1	---	---
Particles >71µm		ASTM D7647	>3	0	---	---
Oil Cleanliness		ISO 4406 (c)	>18/16/13	17/16/13	---	---
Calcium	ppm	ASTM D5185(m)	<0.1	0	---	---
Magnesium	ppm	ASTM D5185(m)	<0.1	0	---	---
Phosphorus	ppm	ASTM D5185(m)	<0.1	<1	---	---
Zinc	ppm	ASTM D5185(m)	<0.1	0	---	---

FUEL CONDITION

All laboratory tests indicate that this sample meets specifications for No.2 diesel fuel, low sulfur (US EPA/CGSB-3.517-3 type B).

Specific Gravity		ASTM D1298*	0.839	0.832	---	---
Fuel Color	text	Visual Screen*	Yellow	Pink	---	---
Visc @ 40°C	cSt	ASTM D7279(m)	3.0	2	---	---
Pensky-Martens Flash Point	°C	ASTM D7215*	52	51.4	---	---
Sulfur	ppm	ASTM D5185(m)	250	21	---	---
Initial Boiling Point	°C	ASTM D2887*	165	160	---	---
10% Distill Point	°C	ASTM D2887*	201	191	---	---
20% Distill Point	°C	ASTM D2887*	216	206	---	---
30% Distill Point	°C	ASTM D2887*	230	218	---	---
40% Distill Point	°C	ASTM D2887*	243	229	---	---
50% Distill Point	°C	ASTM D2887*	255	240	---	---
60% Distill Point	°C	ASTM D2887*	267	251	---	---
70% Distill Point	°C	ASTM D2887*	280	261	---	---
80% Distill Point	°C	ASTM D2887*	295	275	---	---
90% Distill Point	°C	ASTM D2887*	310	298	---	---
Final Boiling Point	°C	ASTM D2887*	341	358	---	---
API Gravity		ASTM D1298*	37.7	38	---	---
Cetane Index		ASTM D4737*	<40.0	46	---	---



Laboratory : WearCheck - C8-1175 Appleby Line, Burlington, ON L7L 5H9
Sample No. : CU0021707
Lab Number : 02633329
Unique Number : 5774482
Test Package : FUEL (Additional Tests: CC Flash, PrtCount)

CUMMINS EASTERN CANADA LP
 321 DOAK ROAD
 FREDERICTON, NB
 CA E3C 2E7
 Contact: Shelley Brawn
 Shelley.Brawn@Cummins.com
 T: (506)451-1929
 F: (506)451-1927

To discuss this sample report, contact Customer Service at 1-800-268-2131.
 Test denoted (*) outside scope of accreditation, (m) method modified, (e) tested at external lab.
 Validity of results and interpretation are based on the sample and information as supplied.