



OIL ANALYSIS REPORT

WEAR	MARGINAL
CONTAMINATION	ABNORMAL
FLUID CONDITION	NORMAL

Area
EXCAVATION CAROL [402980]
Machine Id
VOLVO ECR355EL 314094
Component
Hydraulic System
Fluid
VOLVO SUPER HYDRAULIC OIL 46 (--- GAL)

RECOMMENDATION

We advise that you check all areas where contaminants can enter the system. We advise that you check for visible metal particles in the oil. We advise that you perform a filter service, and use off-line filtration to improve the cleanliness of the system fluid. We recommend an early resample to monitor this condition. We suspect that the abnormal contaminant(s) is the result of incorrect sampling technique. DISCLAIMER: Interpretation of results is based on the sample as received from the customer. The condition of the sample and the method of sampling cannot be verified.

WEAR

Light concentration of visible metal present.

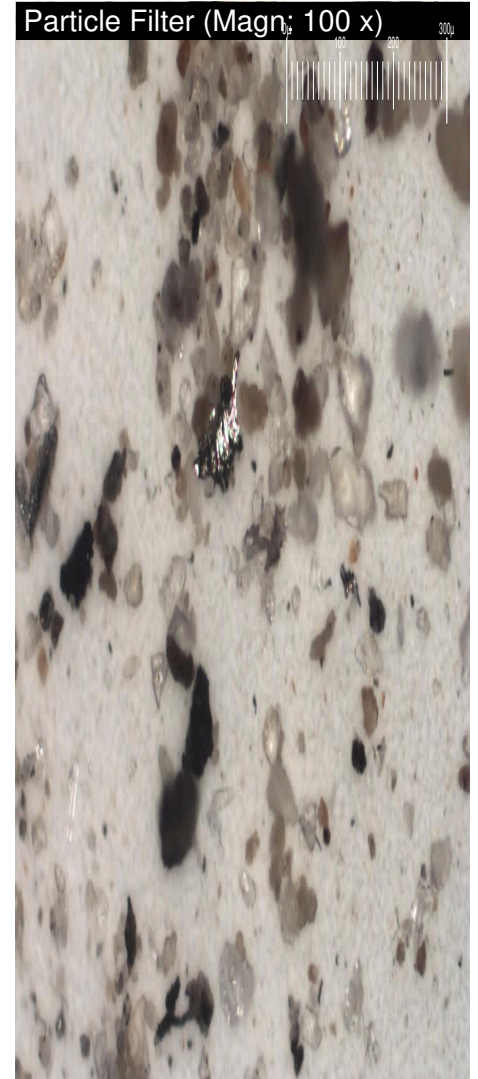
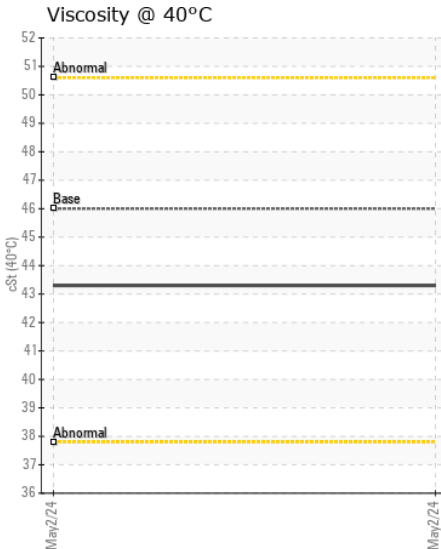
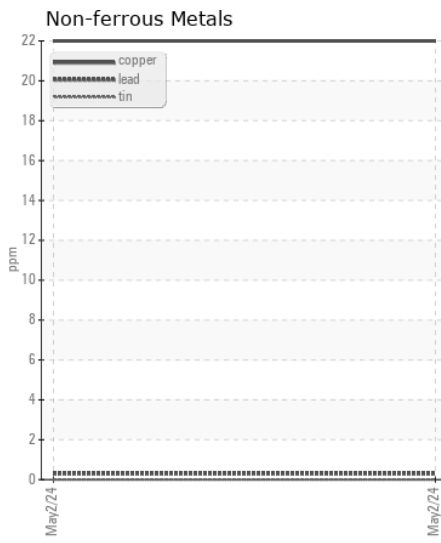
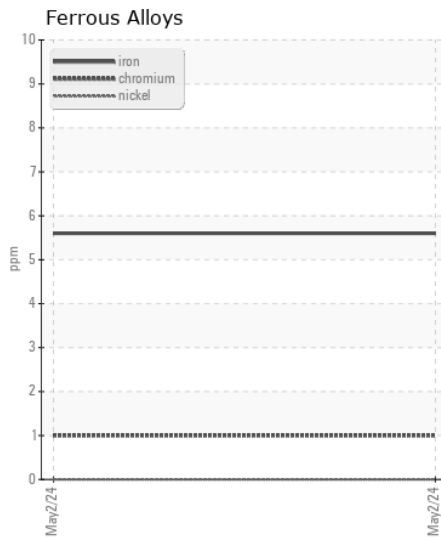
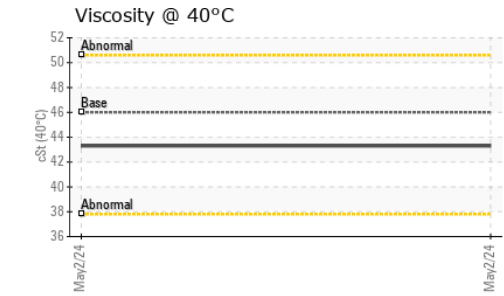
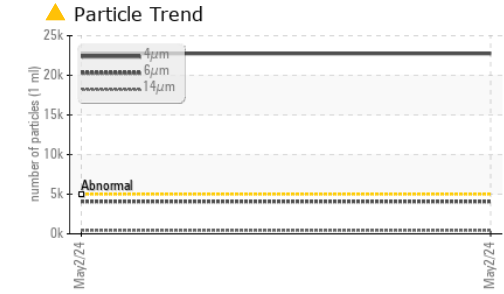
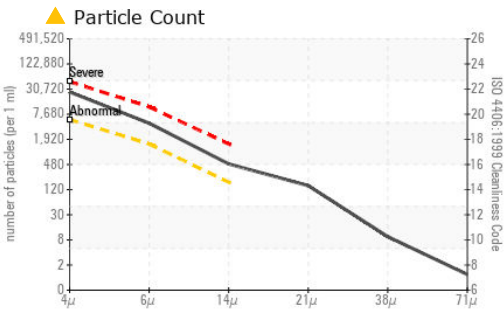
CONTAMINATION

There is a moderate amount of particulates (2 to 100 microns in size) present in the oil. Light concentration of visible dirt/debris present in the oil.

FLUID CONDITION

The oil is no longer serviceable as a result of the abnormal and/or severe wear.

Test	UOM	Method	Limit/Abn	Current	History1	History2
Sample Number		Client Info		VCE220125	---	---
Sample Date		Client Info		02 May 2024	---	---
Machine Age	hrs	Client Info		5020	---	---
Oil Age	hrs	Client Info		0	---	---
Filter Age	hrs	Client Info		0	---	---
Oil Changed		Client Info		Not Chngd	---	---
Filter Changed		Client Info		Not Chngd	---	---
Sample Status				ABNORMAL	---	---
Iron	ppm	ASTM D5185(m)	>20	6	---	---
Chromium	ppm	ASTM D5185(m)	>10	1	---	---
Nickel	ppm	ASTM D5185(m)	>10	0	---	---
Titanium	ppm	ASTM D5185(m)		0	---	---
Silver	ppm	ASTM D5185(m)		0	---	---
Aluminum	ppm	ASTM D5185(m)	>10	<1	---	---
Lead	ppm	ASTM D5185(m)	>10	<1	---	---
Copper	ppm	ASTM D5185(m)	>75	22	---	---
Tin	ppm	ASTM D5185(m)	>10	0	---	---
Vanadium	ppm	ASTM D5185(m)		0	---	---
White Metal	scalar	Visual*	NONE	▲ VLITE	---	---
Yellow Metal	scalar	Visual*	NONE	NONE	---	---
Silicon	ppm	ASTM D5185(m)	>20	<1	---	---
Potassium	ppm	ASTM D5185(m)	>20	<1	---	---
Water		WC Method	>0.1	NEG	---	---
Particles >4µm		ASTM D7647	>5000	▲ 22744	---	---
Particles >6µm		ASTM D7647	>1300	▲ 4079	---	---
Particles >14µm		ASTM D7647	>160	▲ 435	---	---
Particles >21µm		ASTM D7647	>40	▲ 132	---	---
Particles >38µm		ASTM D7647	>10	8	---	---
Particles >71µm		ASTM D7647	>3	1	---	---
Oil Cleanliness		ISO 4406 (c)	>19/17/14	▲ 22/19/16	---	---
Silt	scalar	Visual*	NONE	NONE	---	---
Debris	scalar	Visual*	NONE	▲ VLITE	---	---
Sand/Dirt	scalar	Visual*	NONE	NONE	---	---
Appearance	scalar	Visual*	NORML	NORML	---	---
Odor	scalar	Visual*	NORML	NORML	---	---
Emulsified Water	scalar	Visual*	>0.1	NEG	---	---
Sodium	ppm	ASTM D5185(m)		<1	---	---
Boron	ppm	ASTM D5185(m)	14	<1	---	---
Barium	ppm	ASTM D5185(m)	0.0	0	---	---
Molybdenum	ppm	ASTM D5185(m)	0.0	0	---	---
Manganese	ppm	ASTM D5185(m)	0.0	0	---	---
Magnesium	ppm	ASTM D5185(m)	2.6	1	---	---
Calcium	ppm	ASTM D5185(m)	49	15	---	---
Phosphorus	ppm	ASTM D5185(m)	354	313	---	---
Zinc	ppm	ASTM D5185(m)	419	313	---	---
Sulfur	ppm	ASTM D5185(m)	3719	2076	---	---
Visc @ 40°C	cSt	ASTM D7279(m)	46	43.3	---	---



Laboratory : WearCheck - C8-1175 Appleby Line, Burlington, ON L7L 5H9
Sample No. : VGE220125 **Received** : 06 May 2024
Lab Number : 02633521 **Tested** : 07 May 2024
Unique Number : 5774674 **Diagnosed** : 08 May 2024 - Kevin Marson
Test Package : MOB 1 (Additional Tests: BottomAnalysis, FILTERPATCH, PrtCount, PrtFilter

STRONGCO EQUIPMENT
 4535 LOUIS B MAYER
 LAVAL, QC
 CA H7P 6B5
 Contact: Marco Castura
 mcastura@strongco.com

To discuss this sample report, contact Customer Service at 1-800-268-2131.
 Test denoted (*) outside scope of accreditation, (m) method modified, (e) tested at external lab.
 Validity of results and interpretation are based on the sample and information as supplied.

T:
 F: (450)686-0703