



FUEL REPORT

CORROSION	NORMAL
CONTAMINANTS	NORMAL
FUEL CONDITION	NORMAL

Area
System 84 - Evacuation Facilities [13975721]

Machine Id
V-8241A LIFE BOAT #7 (S/N VE-8401B)

Component
Diesel Fuel

Fluid
No.2 DIESEL FUEL (ULTRALOW SULPHUR) (--- GAL)

RECOMMENDATION

Laboratory test indicate that this fuel is suitable for use and meets all test requirements. Resample at the next service interval to monitor.

CORROSION

{not applicable}

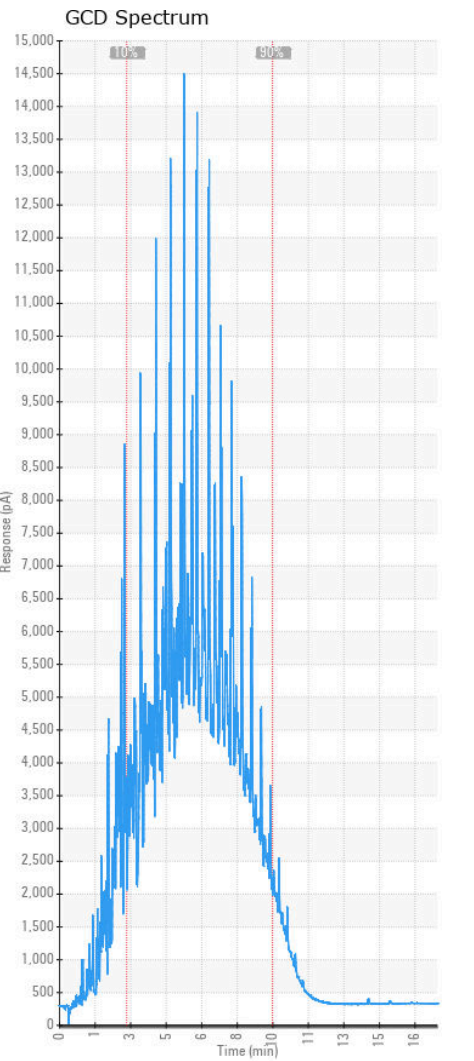
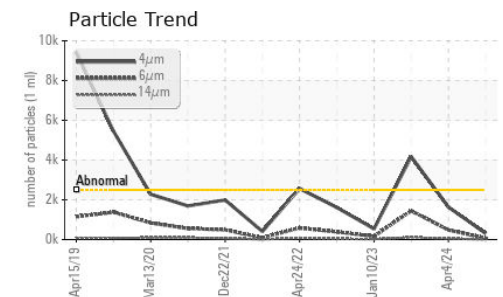
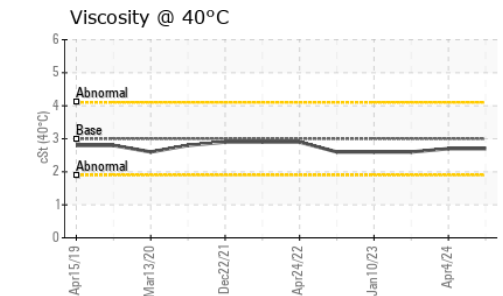
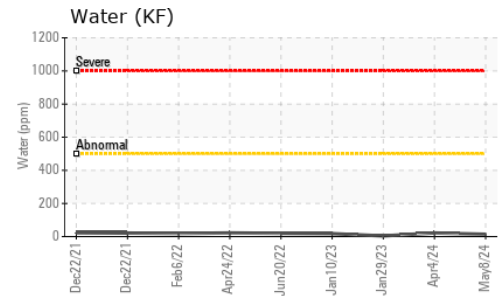
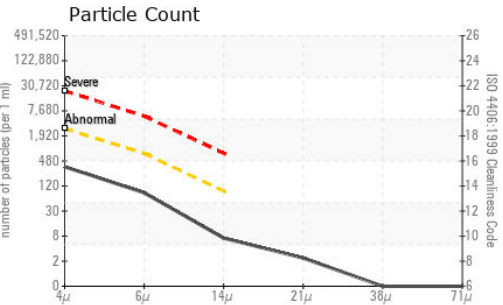
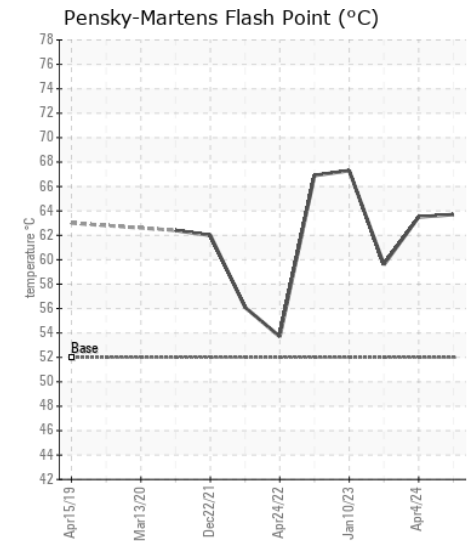
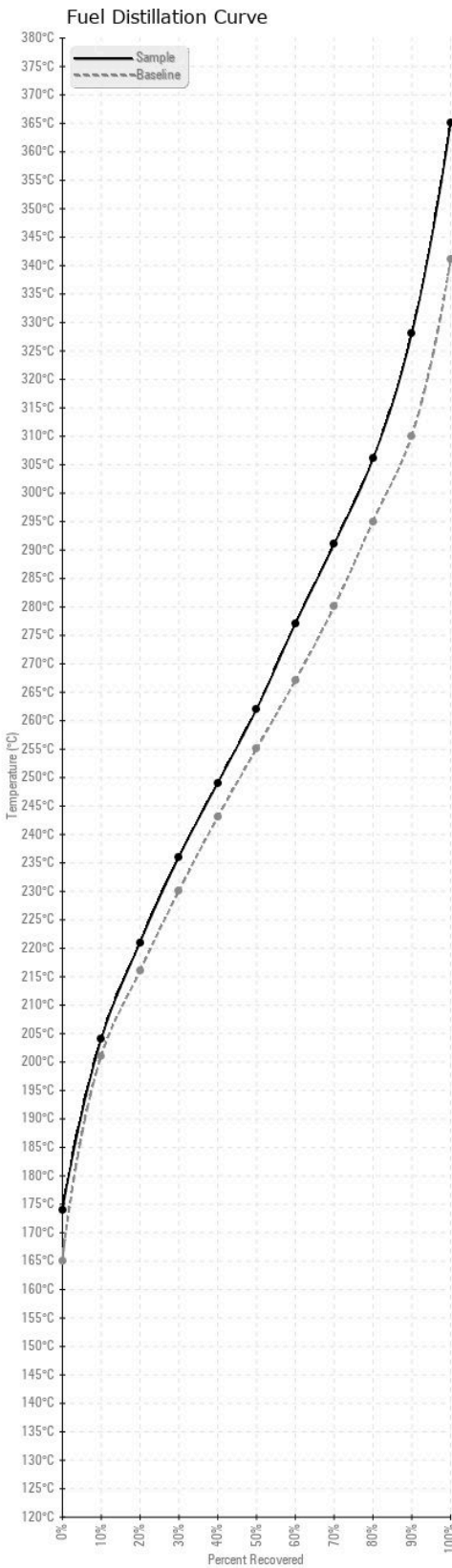
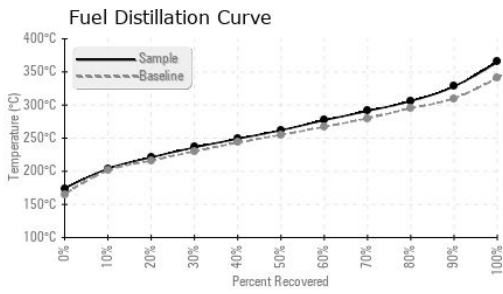
CONTAMINANTS

There is no bacteria or fungus (yeast and/or mold) present in the sample. The system cleanliness is acceptable for your target ISO 4406 cleanliness code. The water content is negligible. There is no indication of any contamination in the diesel fuel.

FUEL CONDITION

All laboratory tests indicate that this sample meets specifications for No.2 ultra-low-sulfur diesel fuel (US EPA/CGSB-3.517-3 type B).

Test	UOM	Method	Limit/Abn	Current	History1	History2
Sample Number		Client Info		PP	PP	PP
Sample Date		Client Info		08 May 2024	04 Apr 2024	29 Jan 2023
Machine Age	hrs	Client Info		0	0	0
Sample Status				NORMAL	NORMAL	ABNORMAL
Aluminum	ppm	ASTM D5185(m)	<0.1	0	0	0
Nickel	ppm	ASTM D5185(m)	<0.1	0	0	0
Lead	ppm	ASTM D5185(m)	<0.1	0	0	0
Vanadium	ppm	ASTM D5185(m)	<0.1	0	0	0
Iron	ppm	ASTM D5185(m)	<0.1	0	0	<1
Silicon	ppm	ASTM D5185(m)	<1.0	0	0	0
Sodium	ppm	ASTM D5185(m)	<0.1	<1	<1	0
Potassium	ppm	ASTM D5185(m)	<0.1	0	0	0
Water	%	ASTM D6304*	<0.05	0.001	0.002	0.001
ppm Water	ppm	ASTM D6304*	<500	14	22	3.9
Particles >4µm		ASTM D7647	>2500	308	1636	4174
Particles >6µm		ASTM D7647	>640	73	483	1452
Particles >14µm		ASTM D7647	>80	6	44	109
Particles >21µm		ASTM D7647	>20	2	11	18
Particles >38µm		ASTM D7647	>4	0	1	0
Particles >71µm		ASTM D7647	>3	0	0	0
Oil Cleanliness		ISO 4406 (c)	>18/16/13	15/13/10	18/16/13	19/18/14
Sediment	%	ASTM D1796(e)*	<0.05	---	---	---
Bacteria	CFU/ml	ASTM D6469*	>=100000	0	0	---
Yeast	CFU/ml	ASTM D6469*	>=100000	0	0	---
Mold	Colonies	ASTM D6469*	MODER	NONE	NONE	---
Calcium	ppm	ASTM D5185(m)	<0.1	0	0	<1
Magnesium	ppm	ASTM D5185(m)	<0.1	0	0	<1
Phosphorus	ppm	ASTM D5185(m)	<0.1	0	<1	<1
Zinc	ppm	ASTM D5185(m)	<0.1	0	0	<1
Specific Gravity		ASTM D1298*	0.839	0.837	0.836	0.834
Fuel Color	text	Visual Screen*	Yllow	Yllow	Yllow	Yllow
Visc @ 40°C	cSt	ASTM D7279(m)	3.0	2.7	2.7	2.6
Pensky-Martens Flash Point	°C	ASTM D7215*	52	63.7	63.5	59.6
Cloud Point	°C	ASTM D2500*		---	---	-12
Sulfur	ppm	ASTM D5185(m)	10	7	6	9
Initial Boiling Point	°C	ASTM D2887*	165	174	174	171
10% Distill Point	°C	ASTM D2887*	201	204	206	203
20% Distill Point	°C	ASTM D2887*	216	221	222	221
30% Distill Point	°C	ASTM D2887*	230	236	238	236
40% Distill Point	°C	ASTM D2887*	243	249	251	249
50% Distill Point	°C	ASTM D2887*	255	262	264	263
60% Distill Point	°C	ASTM D2887*	267	277	279	276
70% Distill Point	°C	ASTM D2887*	280	291	293	290
80% Distill Point	°C	ASTM D2887*	295	306	308	305
90% Distill Point	°C	ASTM D2887*	310	328	330	326
Final Boiling Point	°C	ASTM D2887*	341	365	370	364
API Gravity		ASTM D1298*	37.7	37	37	38
Cetane Index		ASTM D4737*	<40.0	50	51	51



Laboratory : WearCheck - C8-1175 Appleby Line, Burlington, ON L7L 5H9
Sample No. : PP
Lab Number : 02634414
Unique Number : 5775567
Test Package : FUEL (Additional Tests: Bacteria, CC Flash, CldPt, PrtCount, Sediment)

HIBERNIA MGMT & DEVELOPMENT CO. LTD
 SUITE 1000,, 100 NEW GOWER STREET
 ST.JOHN'S, NL
 CA A1C 6K3
 Contact: Sam Nash
 samantha.m.nash@exxonmobil.com

To discuss this sample report, contact Customer Service at 1-800-268-2131.
 Test denoted (*) outside scope of accreditation, (m) method modified, (e) tested at external lab.
 Validity of results and interpretation are based on the sample and information as supplied.

T:
 F: (709)722-3766