



FUEL REPORT

CORROSION	NORMAL
CONTAMINANTS	NORMAL
FUEL CONDITION	NORMAL

Area
System 84 - Evacuation Facilities [13975723]

Machine Id
V-8401D LIFEBOAT #4

Component
Diesel Fuel

Fluid
No.2 DIESEL FUEL (ULTRALOW SULPHUR) (--- GAL)

RECOMMENDATION

Laboratory test indicate that this fuel is suitable for use and meets all test requirements. Resample at the next service interval to monitor.

Test	UOM	Method	Limit/Abn	Current	History1	History2
Sample Number		Client Info		PP	WC	PP
Sample Date		Client Info		08 May 2024	28 Mar 2023	19 Jun 2022
Machine Age	hrs	Client Info		0	0	0
Sample Status				NORMAL	ABNORMAL	NORMAL

CORROSION

{not applicable}

Aluminum	ppm	ASTM D5185(m)	<0.1	0	0	0
Nickel	ppm	ASTM D5185(m)	<0.1	0	0	0
Lead	ppm	ASTM D5185(m)	<0.1	0	0	0
Vanadium	ppm	ASTM D5185(m)	<0.1	0	0	0
Iron	ppm	ASTM D5185(m)	<0.1	0	<1	<1

CONTAMINANTS

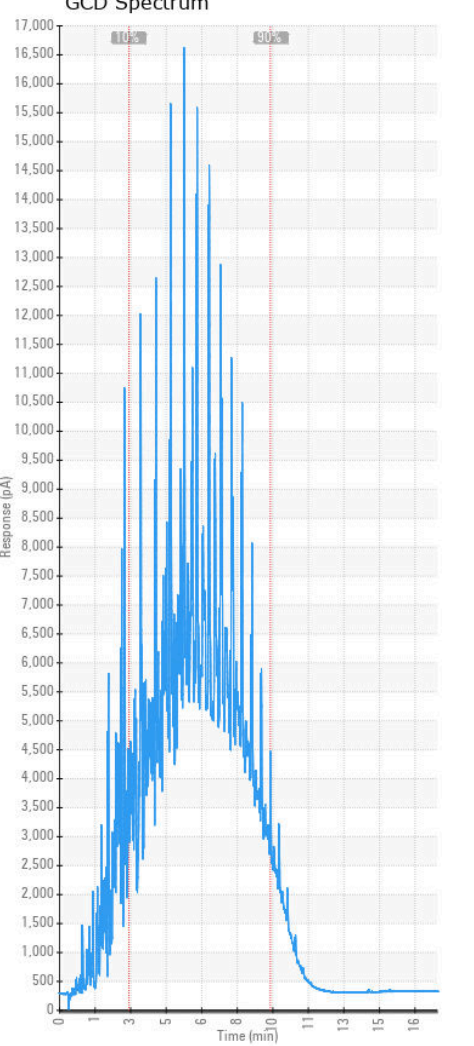
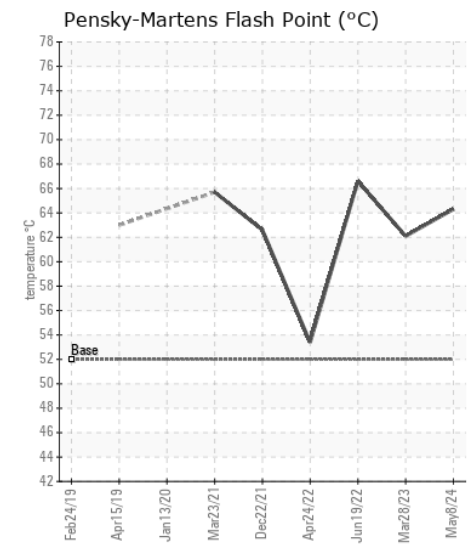
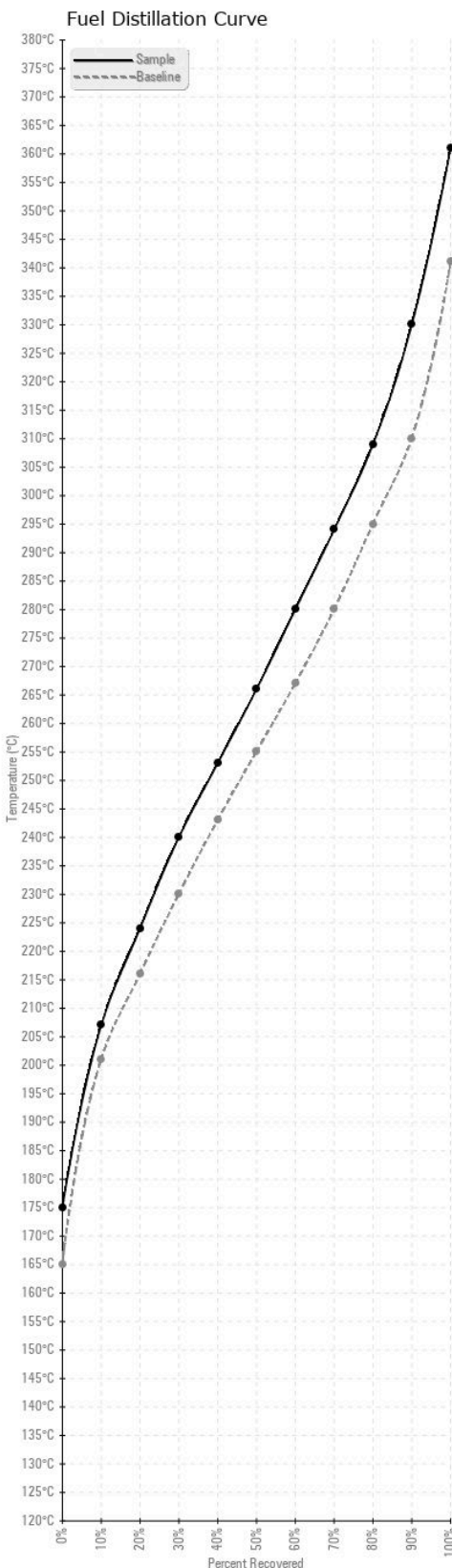
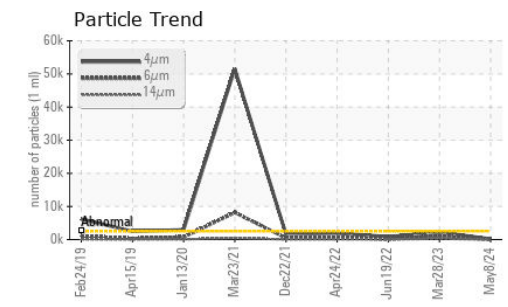
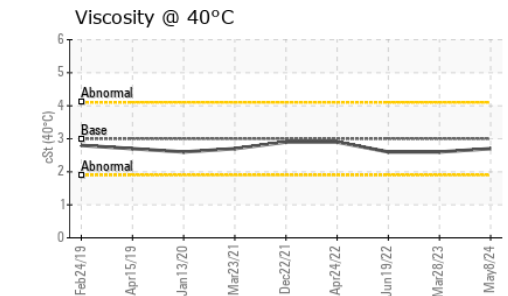
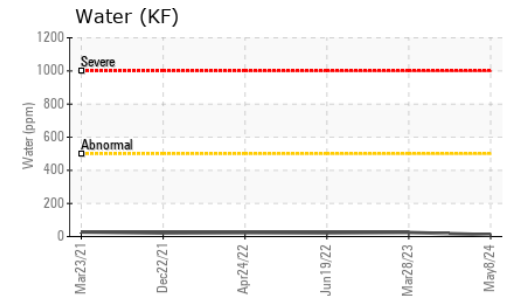
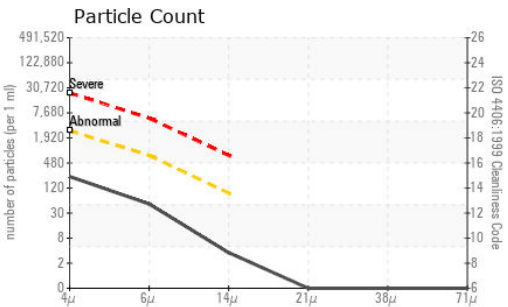
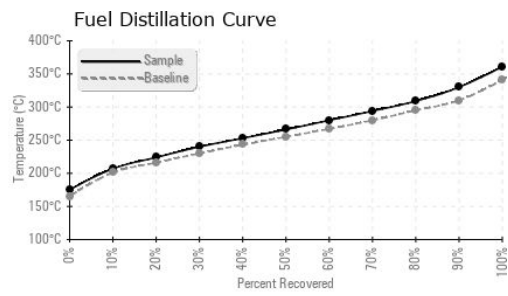
There is no bacteria or fungus (yeast and/or mold) present in the sample. The system cleanliness is acceptable for your target ISO 4406 cleanliness code. The water content is negligible. There is no indication of any contamination in the diesel fuel. Small amount of bacteria present. No reportable mold present. No reportable yeast present.

Silicon	ppm	ASTM D5185(m)	<1.0	0	0	0
Sodium	ppm	ASTM D5185(m)	<0.1	<1	<1	0
Potassium	ppm	ASTM D5185(m)	<0.1	0	0	0
Water	%	ASTM D6304*	<0.05	0.001	0.002	0.002
ppm Water	ppm	ASTM D6304*	<500	11	25.0	21.7
Particles >4µm		ASTM D7647	>2500	200	2224	876
Particles >6µm		ASTM D7647	>640	44	983	171
Particles >14µm		ASTM D7647	>80	3	228	16
Particles >21µm		ASTM D7647	>20	0	85	5
Particles >38µm		ASTM D7647	>4	0	3	0
Particles >71µm		ASTM D7647	>3	0	0	0
Oil Cleanliness		ISO 4406 (c)	>18/16/13	15/13/9	18/17/15	17/15/11
Sediment	%	ASTM D1796(e)*	<0.05	---	0.043	---
Bacteria	CFU/ml	ASTM D6469*	>=100000	100	0	0
Yeast	CFU/ml	ASTM D6469*	>=100000	0	0	0
Mold	Colonies	ASTM D6469*	MODER	NONE	NONE	NONE
Calcium	ppm	ASTM D5185(m)	<0.1	0	<1	0
Magnesium	ppm	ASTM D5185(m)	<0.1	0	<1	<1
Phosphorus	ppm	ASTM D5185(m)	<0.1	0	0	<1
Zinc	ppm	ASTM D5185(m)	<0.1	0	<1	0

FUEL CONDITION

All laboratory tests indicate that this sample meets specifications for No.2 ultra-low-sulfur diesel fuel (US EPA/CGSB-3.517-3 type B).

Specific Gravity		ASTM D1298*	0.839	0.837	0.836	0.842
Fuel Color	text	Visual Screen*	Yllow	Yllow	Yllow	Yllow
Visc @ 40°C	cSt	ASTM D7279(m)	3.0	2.7	2.6	2.6
Pensky-Martens Flash Point	°C	ASTM D7215*	52	64.3	62.1	66.6
Cloud Point	°C	ASTM D2500*		---	-12	-12
Sulfur	ppm	ASTM D5185(m)	10	6	6	10
Initial Boiling Point	°C	ASTM D2887*	165	175	173	163
10% Distill Point	°C	ASTM D2887*	201	207	205	206
20% Distill Point	°C	ASTM D2887*	216	224	222	223
30% Distill Point	°C	ASTM D2887*	230	240	237	237
40% Distill Point	°C	ASTM D2887*	243	253	251	250
50% Distill Point	°C	ASTM D2887*	255	266	264	262
60% Distill Point	°C	ASTM D2887*	267	280	277	274
70% Distill Point	°C	ASTM D2887*	280	294	291	288
80% Distill Point	°C	ASTM D2887*	295	309	307	304
90% Distill Point	°C	ASTM D2887*	310	330	329	324
Final Boiling Point	°C	ASTM D2887*	341	361	374	346
API Gravity		ASTM D1298*	37.7	37	37	36
Cetane Index		ASTM D4737*	<40.0	51	50	48



Laboratory : WearCheck - C8-1175 Appleby Line, Burlington, ON L7L 5H9
Sample No. : PP
Lab Number : 02634416
Unique Number : 5775569
Test Package : FUEL (Additional Tests: Bacteria, CC Flash, CldPt, PrtCount, Sediment)

HIBERNIA MGMT & DEVELOPMENT CO. LTD
 SUITE 1000,, 100 NEW GOWER STREET
 ST.JOHNS, NL
 CA A1C 6K3
 Contact: Sam Nash
 samantha.m.nash@exxonmobil.com
 T:
 F: (709)722-3766

To discuss this sample report, contact Customer Service at 1-800-268-2131.
 Test denoted (*) outside scope of accreditation, (m) method modified, (e) tested at external lab.
 Validity of results and interpretation are based on the sample and information as supplied.