



FUEL REPORT

| | |
|----------------|--------|
| CORROSION | NORMAL |
| CONTAMINANTS | SEVERE |
| FUEL CONDITION | NORMAL |



Area
RAFAT
Machine Id
CASE CX470C CX470C
Component
Diesel Fuel
Fluid
No.2 DIESEL FUEL (LOW-SULPHUR) (--- GAL)

RECOMMENDATION

Check seals and/or filters for points of contaminant entry. Laboratory test indicate that this fuel is suitable for use and meets all test requirements. The air breather requires service. If unrated, we recommend that you replace with a suitable micron rated and/or desiccant air breather. If rated, we recommend that you service/replace the breather. We advise that you filter this fluid before use. We recommend you service the filters on this component. Resample in 30-45 days to monitor this situation.

CORROSION

{not applicable}

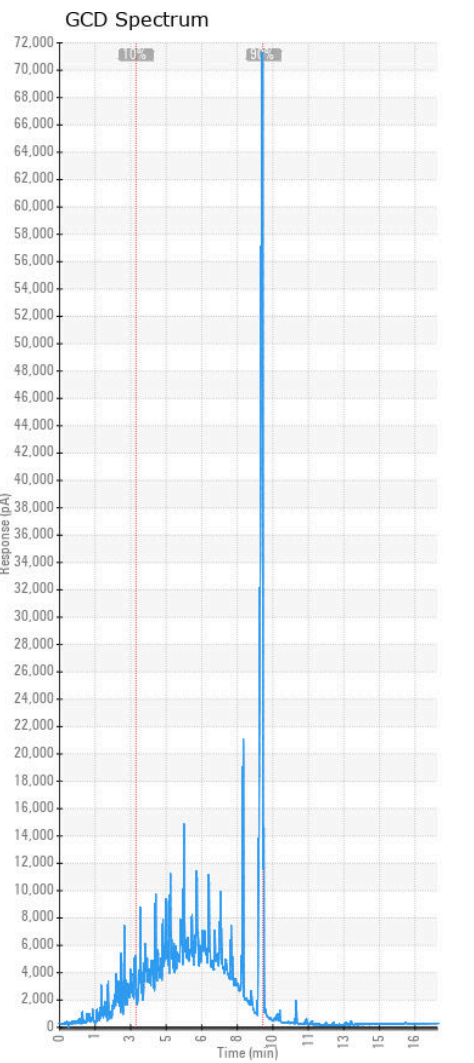
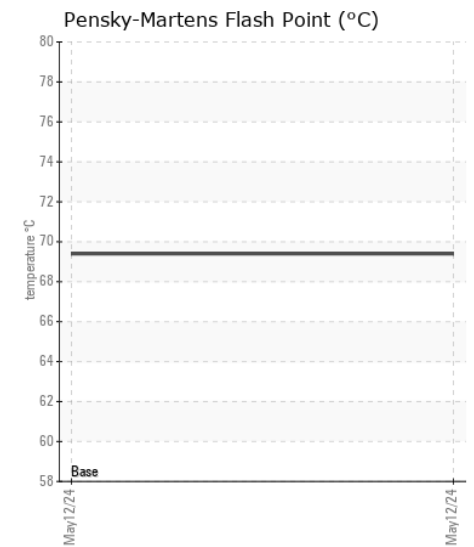
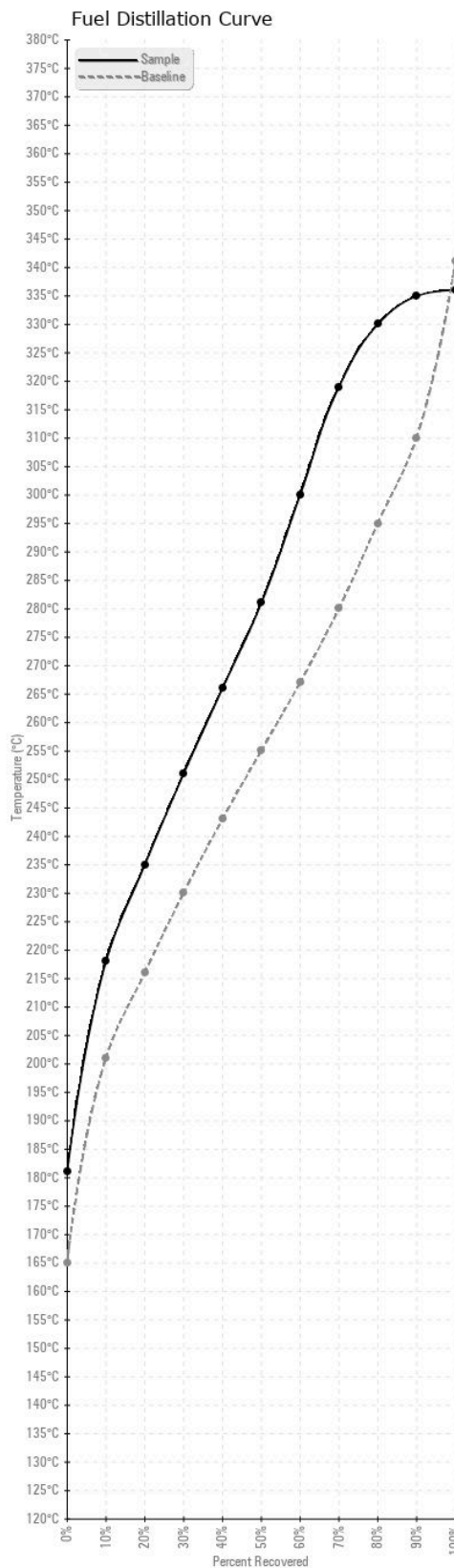
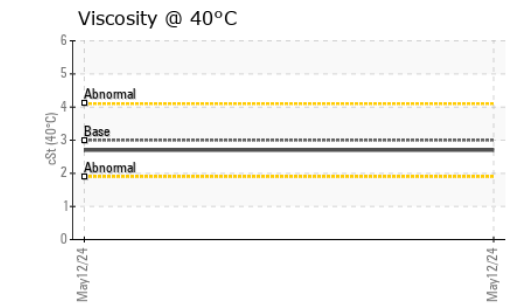
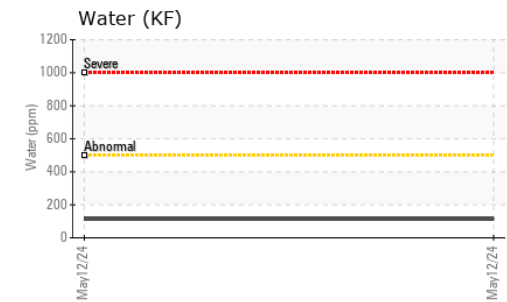
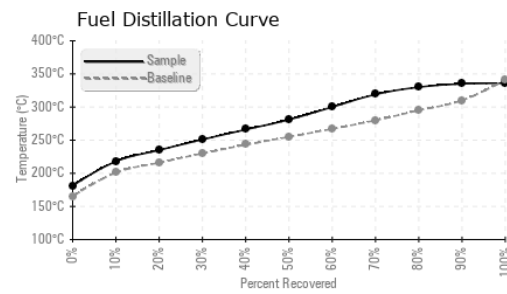
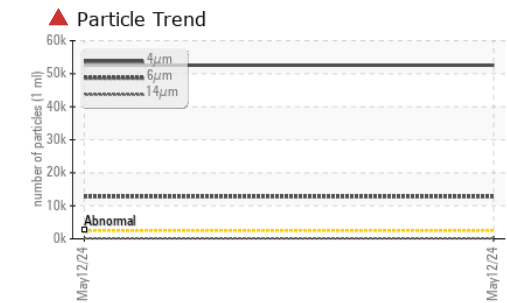
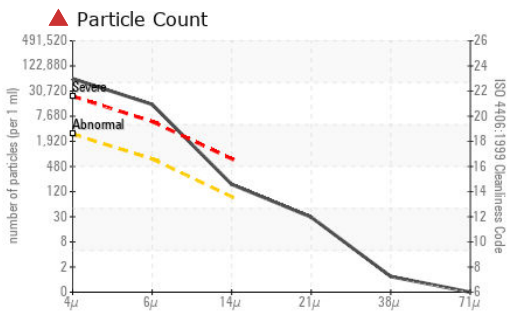
CONTAMINANTS

There is a high amount of silt (particulates < 14 microns in size) present in the fuel. The water content is negligible.

FUEL CONDITION

All laboratory tests indicate that this sample meets specifications for No.2 diesel fuel, low sulfur (US EPA/CGSB-3.517-3 type B). The fuel is still serviceable provided that the contaminant(s) can be reduced to acceptable levels.

| Test | UOM | Method | Limit/Abn | Current | History1 | History2 |
|----------------------------|------|----------------|-----------|-------------|----------|----------|
| Sample Number | | Client Info | | WC0910056 | --- | --- |
| Sample Date | | Client Info | | 12 May 2024 | --- | --- |
| Machine Age | hrs | Client Info | | 0 | --- | --- |
| Sample Status | | | | SEVERE | --- | --- |
| Aluminum | ppm | ASTM D5185(m) | <0.1 | 0 | --- | --- |
| Nickel | ppm | ASTM D5185(m) | <0.1 | 0 | --- | --- |
| Lead | ppm | ASTM D5185(m) | <0.1 | 0 | --- | --- |
| Vanadium | ppm | ASTM D5185(m) | <0.1 | 0 | --- | --- |
| Iron | ppm | ASTM D5185(m) | <0.1 | 0 | --- | --- |
| Silicon | ppm | ASTM D5185(m) | <1.0 | 0 | --- | --- |
| Sodium | ppm | ASTM D5185(m) | <0.1 | 0 | --- | --- |
| Potassium | ppm | ASTM D5185(m) | <0.1 | 0 | --- | --- |
| Water | % | ASTM D6304* | <0.05 | 0.011 | --- | --- |
| ppm Water | ppm | ASTM D6304* | <500 | 113 | --- | --- |
| Particles >4µm | | ASTM D7647 | >2500 | ▲ 52580 | --- | --- |
| Particles >6µm | | ASTM D7647 | >640 | ▲ 12797 | --- | --- |
| Particles >14µm | | ASTM D7647 | >80 | ● 158 | --- | --- |
| Particles >21µm | | ASTM D7647 | >20 | 26 | --- | --- |
| Particles >38µm | | ASTM D7647 | >4 | 1 | --- | --- |
| Particles >71µm | | ASTM D7647 | >3 | 0 | --- | --- |
| Oil Cleanliness | | ISO 4406 (c) | >18/16/13 | ▲ 23/21/14 | --- | --- |
| Calcium | ppm | ASTM D5185(m) | <0.1 | <1 | --- | --- |
| Magnesium | ppm | ASTM D5185(m) | <0.1 | 0 | --- | --- |
| Phosphorus | ppm | ASTM D5185(m) | <0.1 | <1 | --- | --- |
| Zinc | ppm | ASTM D5185(m) | <0.1 | <1 | --- | --- |
| Specific Gravity | | ASTM D1298* | 0.839 | 0.861 | --- | --- |
| Fuel Color | text | Visual Screen* | Yllow | Orang | --- | --- |
| Visc @ 40°C | cSt | ASTM D7279(m) | 3.0 | 2.7 | --- | --- |
| Pensky-Martens Flash Point | °C | ASTM D7215* | 52 | 69.4 | --- | --- |
| Sulfur | ppm | ASTM D5185(m) | 250 | 34 | --- | --- |
| Initial Boiling Point | °C | ASTM D2887* | 165 | 181 | --- | --- |
| 10% Distill Point | °C | ASTM D2887* | 201 | 218 | --- | --- |
| 20% Distill Point | °C | ASTM D2887* | 216 | 235 | --- | --- |
| 30% Distill Point | °C | ASTM D2887* | 230 | 251 | --- | --- |
| 40% Distill Point | °C | ASTM D2887* | 243 | 266 | --- | --- |
| 50% Distill Point | °C | ASTM D2887* | 255 | 281 | --- | --- |
| 60% Distill Point | °C | ASTM D2887* | 267 | 300 | --- | --- |
| 70% Distill Point | °C | ASTM D2887* | 280 | 319 | --- | --- |
| 80% Distill Point | °C | ASTM D2887* | 295 | 330 | --- | --- |
| 90% Distill Point | °C | ASTM D2887* | 310 | 335 | --- | --- |
| Final Boiling Point | °C | ASTM D2887* | 341 | 336 | --- | --- |
| API Gravity | | ASTM D1298* | 37.7 | 32 | --- | --- |
| Cetane Index | | ASTM D4737* | <40.0 | 45 | --- | --- |



Laboratory : WearCheck - C8-1175 Appleby Line, Burlington, ON L7L 5H9
Sample No. : WC0910056
Lab Number : 02635105
Unique Number : 5776258
Test Package : FUEL (Additional Tests: CC Flash, PrtCount)

Received : 13 May 2024
Tested : 17 May 2024
Diagnosed : 17 May 2024 - Kevin Marson

To discuss this sample report, contact Customer Service at 1-800-268-2131.
 Test denoted (*) outside scope of accreditation, (m) method modified, (e) tested at external lab.
 Validity of results and interpretation are based on the sample and information as supplied.

STRONGCO EQUIPMENT
 1075 CLARK BOULEVARD
 BRAMPTON, ON
 CA L6T 3W4
 Contact: Demitri Rjevskii
 drjevskii@strongco.com
 T: (647)218-3575
 F: