



FUEL REPORT

CORROSION	NORMAL
CONTAMINANTS	NORMAL
FUEL CONDITION	NORMAL

Area
[ORD0113699]
 Machine Id
UNDER GROUND #2

Component
Diesel Fuel
 Fluid
No.2 DIESEL FUEL (ULTRALOW SULPHUR) (--- GAL)

RECOMMENDATION

Laboratory test indicate that this fuel is suitable for use and meets all test requirements. Resample at the next service interval to monitor.

CORROSION

{not applicable}

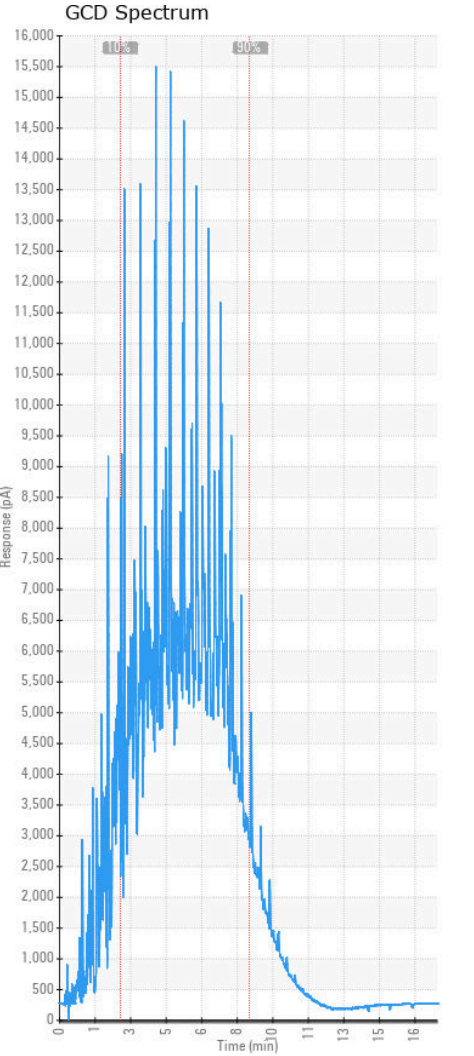
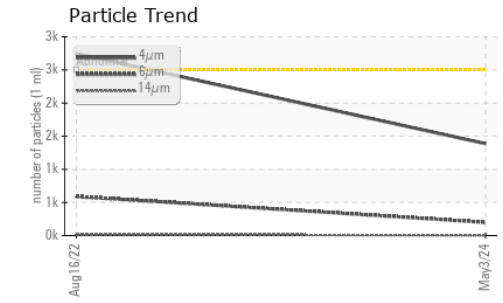
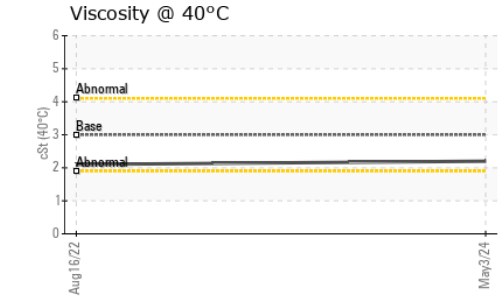
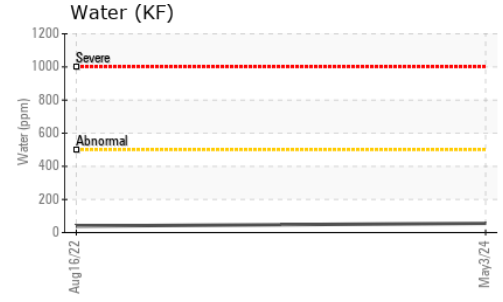
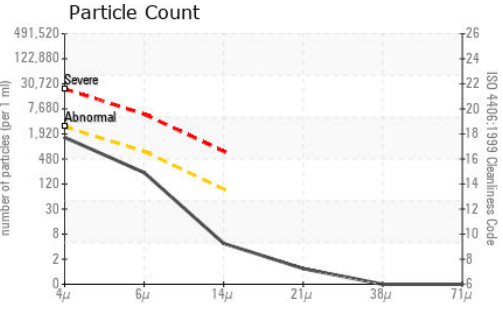
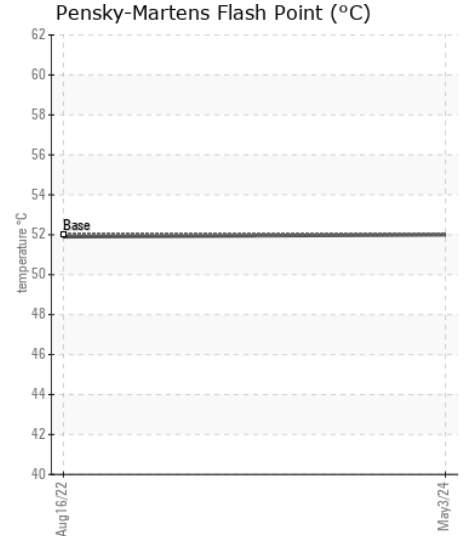
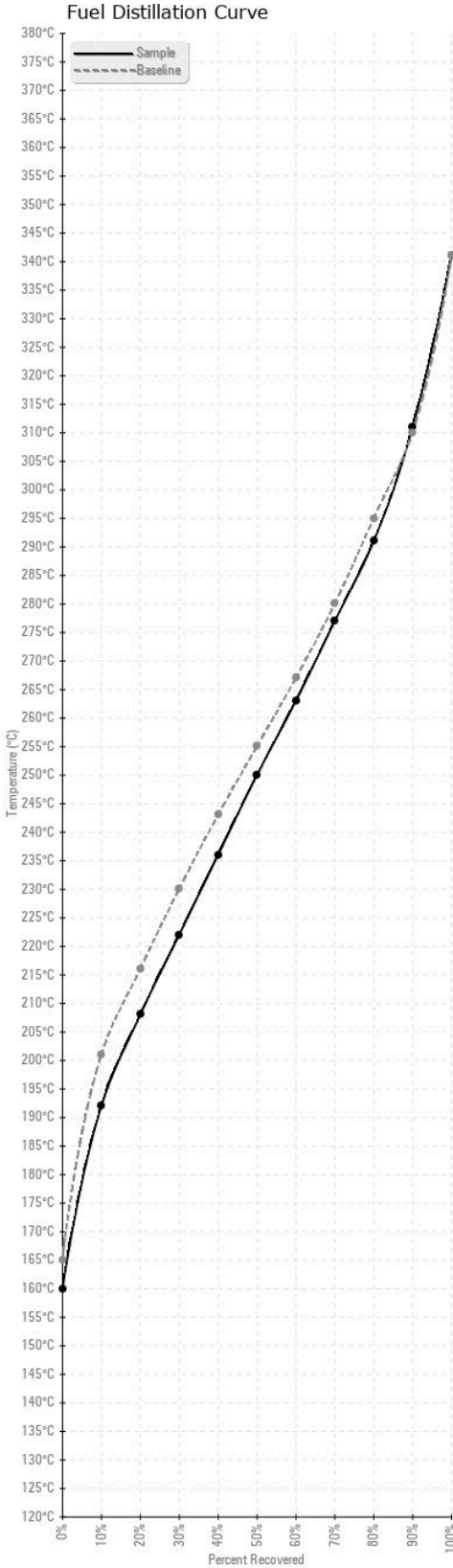
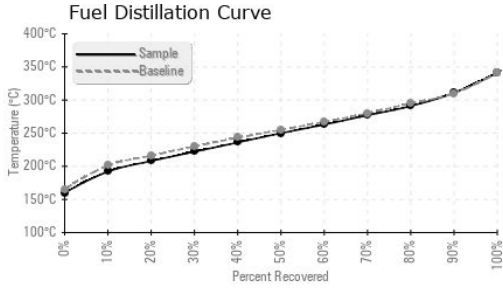
CONTAMINANTS

There is no bacteria or fungus (yeast and/or mold) present in the sample. The system cleanliness is acceptable for your target ISO 4406 cleanliness code. The water content is negligible. There is no indication of any contamination in the diesel fuel.

FUEL CONDITION

All laboratory tests indicate that this sample meets specifications for No.2 ultra-low-sulfur diesel fuel (US EPA/CGSB-3.517-3 type B).

Test	UOM	Method	Limit/Abn	Current	History1	History2
Sample Number		Client Info		WC0942481	WC0728101	---
Sample Date		Client Info		03 May 2024	16 Aug 2022	---
Machine Age	hrs	Client Info		0	0	---
Sample Status				NORMAL	ATTENTION	---
Aluminum	ppm	ASTM D5185(m)	<0.1	0	0	---
Nickel	ppm	ASTM D5185(m)	<0.1	0	0	---
Lead	ppm	ASTM D5185(m)	<0.1	0	0	---
Vanadium	ppm	ASTM D5185(m)	<0.1	0	0	---
Iron	ppm	ASTM D5185(m)	<0.1	<1	<1	---
Silicon	ppm	ASTM D5185(m)	<1.0	0	0	---
Sodium	ppm	ASTM D5185(m)	<0.1	<1	0	---
Potassium	ppm	ASTM D5185(m)	<0.1	0	0	---
Water	%	ASTM D6304*	<0.05	0.005	0.003	---
ppm Water	ppm	ASTM D6304*	<500	56	39.4	---
Particles >4µm		ASTM D7647	>2500	1387	2745	---
Particles >6µm		ASTM D7647	>640	199	590	---
Particles >14µm		ASTM D7647	>80	4	15	---
Particles >21µm		ASTM D7647	>20	1	3	---
Particles >38µm		ASTM D7647	>4	0	0	---
Particles >71µm		ASTM D7647	>3	0	0	---
Oil Cleanliness		ISO 4406 (c)	>18/16/13	18/15/9	19/16/11	---
Bacteria	CFU/ml	ASTM D6469*	>=100000	0	---	---
Yeast	CFU/ml	ASTM D6469*	>=100000	0	---	---
Mold	Colonies	ASTM D6469*	MODER	NONE	---	---
Calcium	ppm	ASTM D5185(m)	<0.1	0	<1	---
Magnesium	ppm	ASTM D5185(m)	<0.1	0	0	---
Phosphorus	ppm	ASTM D5185(m)	<0.1	0	<1	---
Zinc	ppm	ASTM D5185(m)	<0.1	0	<1	---
Specific Gravity		ASTM D1298*	0.839	0.827	0.823	---
Fuel Color	text	Visual Screen*	Yllow	Pink	Red	---
Visc @ 40°C	cSt	ASTM D7279(m)	3.0	2.2	2.1	---
Pensky-Martens Flash Point	°C	ASTM D7215*	52	52	51.9	---
Sulfur	ppm	ASTM D5185(m)	10	10	10	---
Initial Boiling Point	°C	ASTM D2887*	165	160	154	---
10% Distill Point	°C	ASTM D2887*	201	192	189	---
20% Distill Point	°C	ASTM D2887*	216	208	205	---
30% Distill Point	°C	ASTM D2887*	230	222	219	---
40% Distill Point	°C	ASTM D2887*	243	236	233	---
50% Distill Point	°C	ASTM D2887*	255	250	248	---
60% Distill Point	°C	ASTM D2887*	267	263	263	---
70% Distill Point	°C	ASTM D2887*	280	277	278	---
80% Distill Point	°C	ASTM D2887*	295	291	291	---
90% Distill Point	°C	ASTM D2887*	310	311	312	---
Final Boiling Point	°C	ASTM D2887*	341	341	343	---
API Gravity		ASTM D1298*	37.7	39	40	---
Cetane Index		ASTM D4737*	<40.0	50	51	---



Laboratory : WearCheck - C8-1175 Appleby Line, Burlington, ON L7L 5H9
Sample No. : WC0942481 **Received** : 16 May 2024
Lab Number : 02636225 **Tested** : 21 May 2024
Unique Number : 5785387 **Diagnosed** : 21 May 2024 - Kevin Marson
Test Package : FUEL (Additional Tests: Bacteria, CC Flash, PrtCount)

HONEYWELL
 1929 OGILVIE RD
 GLOUCESTER, ON
 CA K1J 0B9
 Contact: Alain Guindon
 joseph.guindon@cse-cst.gc.ca
 T: (613)991-2659
 F:

To discuss this sample report, contact Customer Service at 1-800-268-2131.
 Test denoted (*) outside scope of accreditation, (m) method modified, (e) tested at external lab.
 Validity of results and interpretation are based on the sample and information as supplied.