



FUEL REPORT

WEAR	NORMAL
CONTAMINATION	NORMAL
FLUID CONDITION	NORMAL

Machine Id
[CFFPH] C-FFPH
 Component
Left Jet Fuel
 Fluid
JET FUEL Type A (--- GAL)

RECOMMENDATION

Laboratory test indicate that this fuel is suitable for use and meets all test requirements. Resample at the next service interval to monitor.

WEAR

{not applicable}

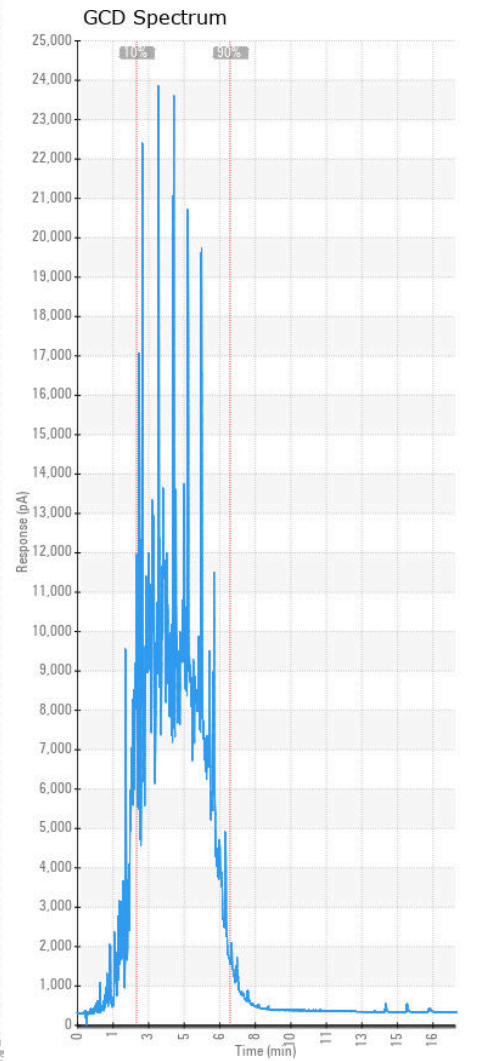
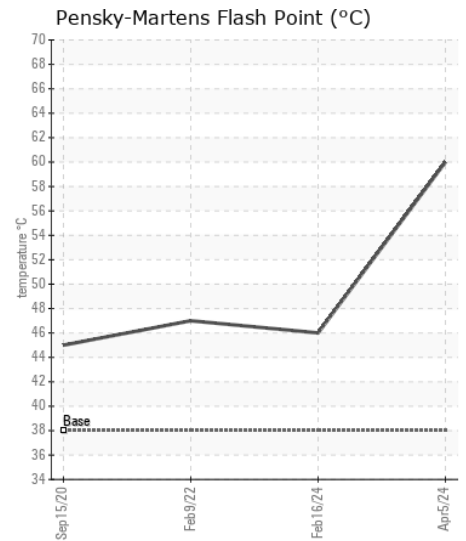
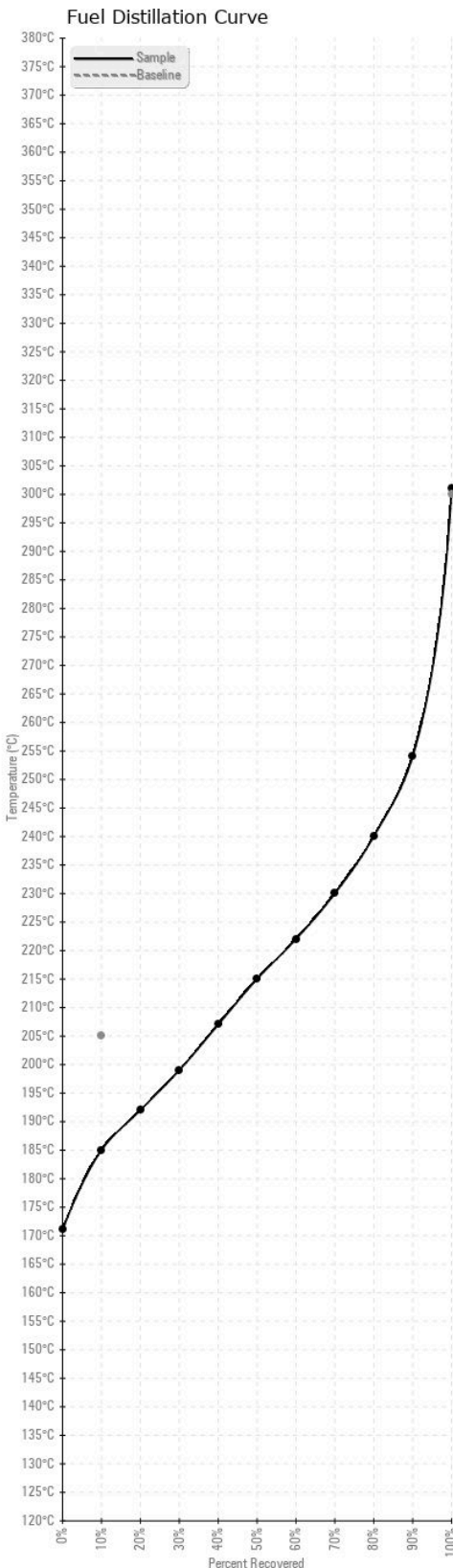
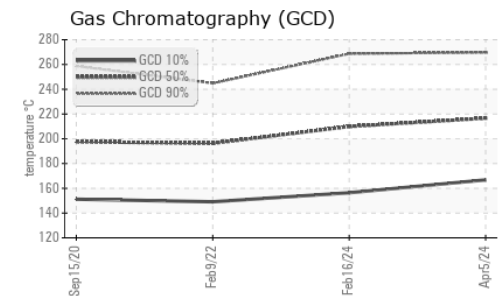
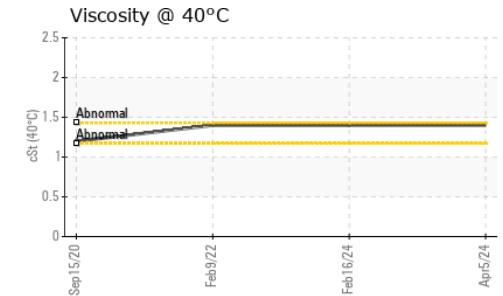
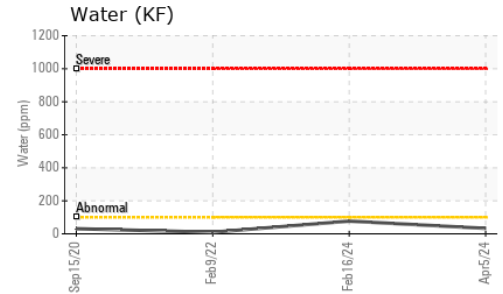
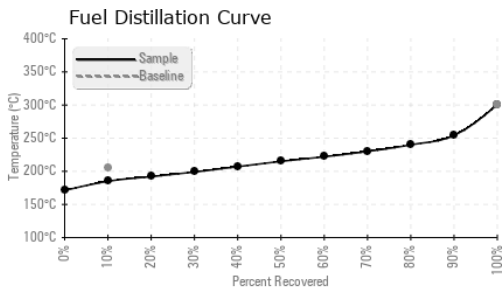
CONTAMINATION

There is no bacteria or fungus (yeast and/or mold) present in the sample. The water content is negligible. The fuel phase was tested for microbes, as there was no separate water phase present in the sample. The MicrobMonitor2 test kit was used to test for microbiological contamination in the sample. There is no indication of any contamination in the jet fuel.

FLUID CONDITION

All laboratory tests indicate that this sample appears to be Jet Fuel Type A.

Test	UOM	Method	Limit/Abn	Current	History1	History2
Sample Number		Client Info		WC	WC0899292	WC0618977
Sample Date		Client Info		05 Apr 2024	16 Feb 2024	09 Feb 2022
Machine Age	hrs	Client Info		0	0	0
Oil Age	hrs	Client Info		0	0	0
Filter Age	hrs	Client Info		0	0	0
Oil Changed		Client Info		N/A	N/A	N/A
Filter Changed		Client Info		N/A	N/A	N/A
Sample Status				NORMAL	NORMAL	NORMAL
Aluminum	ppm	ASTM D5185(m)	<0.1	0	0	0
Nickel	ppm	ASTM D5185(m)	<0.1	0	0	0
Lead	ppm	ASTM D5185(m)	<0.1	0	0	<1
Vanadium	ppm	ASTM D5185(m)	<0.1	0	0	0
Iron	ppm	ASTM D5185(m)	<0.1	0	0	<1
Silicon	ppm	ASTM D5185(m)	<1.0	0	0	0
Sodium	ppm	ASTM D5185(m)	<0.1	<1	<1	<1
Potassium	ppm	ASTM D5185(m)	<0.1	0	0	0
Water	%	ASTM D6304*	<0.05	0.003	0.007	0.001
ppm Water	ppm	ASTM D6304*	<500	33	77	9.6
Microbes	CFU/L	ASTM D6469*	>=4000	0	0	---
Calcium	ppm	ASTM D5185(m)	<0.1	0	0	0
Magnesium	ppm	ASTM D5185(m)	<0.1	0	0	<1
Phosphorus	ppm	ASTM D5185(m)	<0.1	<1	<1	0
Zinc	ppm	ASTM D5185(m)	<0.1	0	0	0
Specific Gravity		ASTM D1298*		0.818	0.805	0.804
Fuel Color	text	Visual Screen*		Yellow	Clear	Clear
Visc @ 40°C	cSt	ASTM D7279(m)	<8.0	1.4	1.4	1.4
Pensky-Martens Flash Point	°C	ASTM D7215*	38	60	46	47
Pour Point	°C	ASTM D97*	-45	-60	-57	-57
Sulfur	ppm	ASTM D5185(m)	<3000	509	738	1185
Initial Boiling Point	°C	ASTM D2887*		171	154	146
10% Distill Point	°C	ASTM D2887*	205	185	175	167
20% Distill Point	°C	ASTM D2887*		192	184	176
30% Distill Point	°C	ASTM D2887*		199	191	182
40% Distill Point	°C	ASTM D2887*		207	200	188
50% Distill Point	°C	ASTM D2887*		215	209	195
60% Distill Point	°C	ASTM D2887*		222	217	202
70% Distill Point	°C	ASTM D2887*		230	226	208
80% Distill Point	°C	ASTM D2887*		240	238	217
90% Distill Point	°C	ASTM D2887*		254	254	231
Final Boiling Point	°C	ASTM D2887*	300	301	296	280
API Gravity		ASTM D1298*	44	41	44	44
Cetane Index		ASTM D4737*	<40.0	44	47	42



Laboratory : WearCheck - C8-1175 Appleby Line, Burlington, ON L7L 5H9
Sample No. : WC
Lab Number : 02637787
Unique Number : 5786949
Test Package : FUEL (Additional Tests: CC Flash)
Received : 27 May 2024
Tested : 10 Jun 2024
Diagnosed : 10 Jun 2024 - Kevin Marson

SUNWING AIRLINES
 44 FASKEN DRIVE, UNIT 12/13
 ETOBICOKE, ON
 CA M9W 5M8
 Contact: Geoff Carroll
 gcarroll@flysunwing.com
 T: (416)802-9643
 F: (416)640-1595

To discuss this sample report, contact Customer Service at 1-800-268-2131.
 Test denoted (*) outside scope of accreditation, (m) method modified, (e) tested at external lab.
 Validity of results and interpretation are based on the sample and information as supplied.