

Machine Id  
**000195421**  
 Component  
**Diesel Fuel**  
 Fluid  
**No.2 DIESEL FUEL (ULTRALOW SULPHUR) (--- GAL)**

**RECOMMENDATION**

Laboratory test indicate that this fuel is suitable for use and meets all test requirements. We advise that you filter this fluid before use. We recommend you service the filters on this component. We recommend an early resample to monitor this condition.

**CORROSION**

{not applicable}

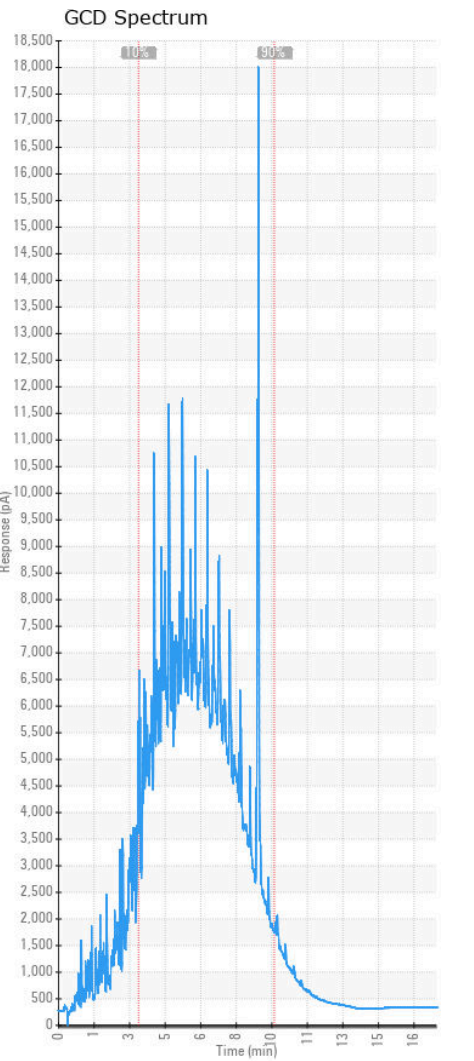
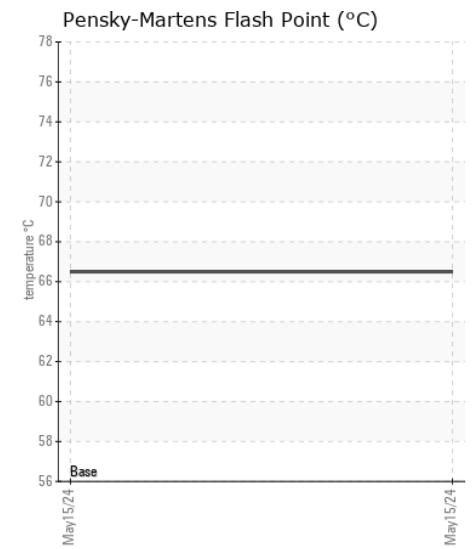
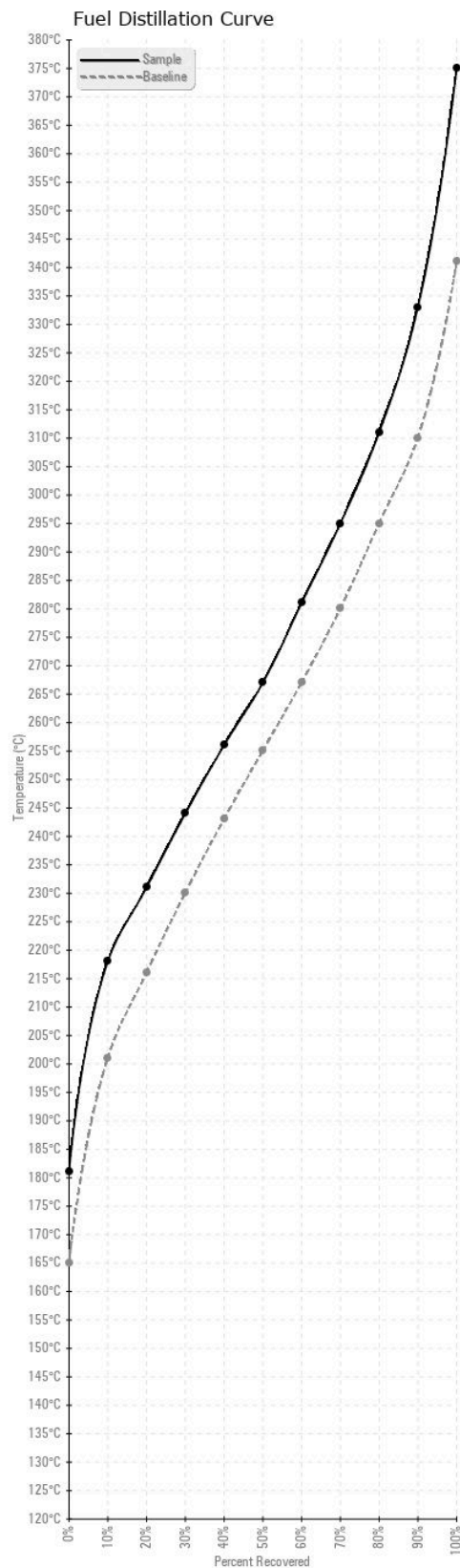
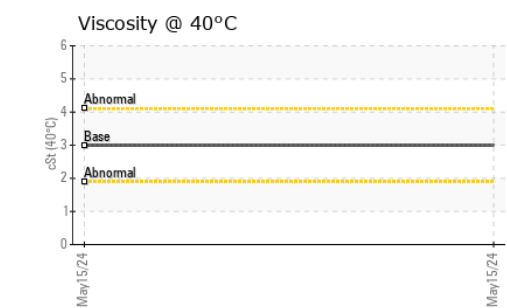
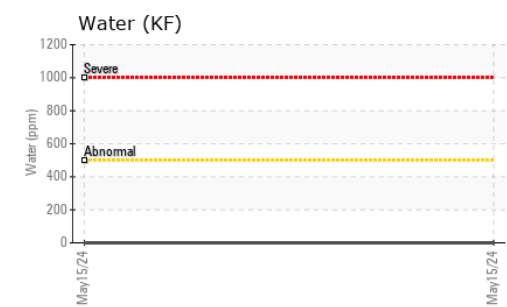
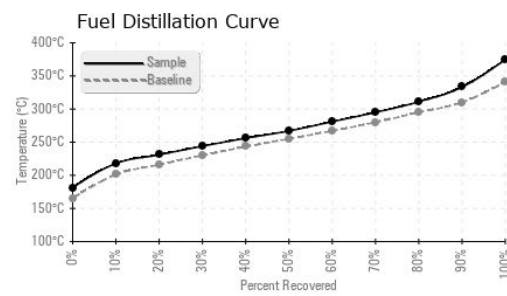
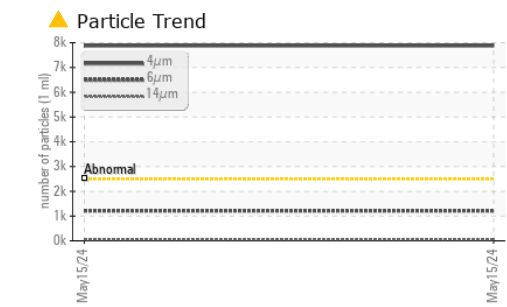
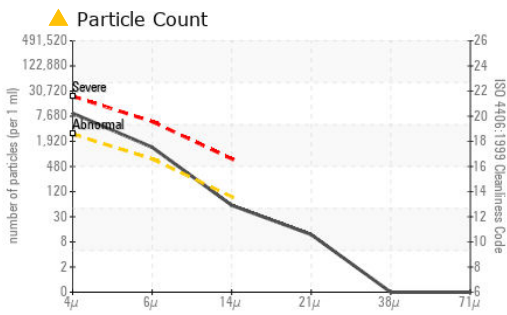
**CONTAMINANTS**

There is a moderate amount of silt (particulates < 14 microns in size) present in the fuel. There is no bacteria or fungus (yeast and/or mold) present in the sample. The water content is negligible.

**FUEL CONDITION**

All laboratory tests indicate that this sample meets specifications for No.2 ultra-low-sulfur diesel fuel (US EPA/CGSB-3.517-3 type B). The fuel is still serviceable provided that the contaminant(s) can be reduced to acceptable levels.

Test	UOM	Method	Limit/Abn	Current	History1	History2
Sample Number		Client Info		<b>CU0022755</b>	---	---
Sample Date		Client Info		<b>15 May 2024</b>	---	---
Machine Age	hrs	Client Info		<b>3464</b>	---	---
Sample Status				<b>ABNORMAL</b>	---	---
Aluminum	ppm	ASTM D5185(m)	<0.1	<b>0</b>	---	---
Nickel	ppm	ASTM D5185(m)	<0.1	<b>0</b>	---	---
Lead	ppm	ASTM D5185(m)	<0.1	<b>0</b>	---	---
Vanadium	ppm	ASTM D5185(m)	<0.1	<b>0</b>	---	---
Iron	ppm	ASTM D5185(m)	<0.1	<b>0</b>	---	---
Silicon	ppm	ASTM D5185(m)	<1.0	<b>0</b>	---	---
Sodium	ppm	ASTM D5185(m)	<0.1	<b>&lt;1</b>	---	---
Potassium	ppm	ASTM D5185(m)	<0.1	<b>0</b>	---	---
Water	%	ASTM D6304*	<0.05	<b>0.00</b>	---	---
ppm Water	ppm	ASTM D6304*	<500	<b>0</b>	---	---
Particles >4µm		ASTM D7647	>2500	<b>▲ 7878</b>	---	---
Particles >6µm		ASTM D7647	>640	<b>● 1213</b>	---	---
Particles >14µm		ASTM D7647	>80	<b>50</b>	---	---
Particles >21µm		ASTM D7647	>20	<b>10</b>	---	---
Particles >38µm		ASTM D7647	>4	<b>0</b>	---	---
Particles >71µm		ASTM D7647	>3	<b>0</b>	---	---
Oil Cleanliness		ISO 4406 (c)	>18/16/13	<b>▲ 20/17/13</b>	---	---
Bacteria	CFU/ml	ASTM D6469*	≥100000	<b>0</b>	---	---
Yeast	CFU/ml	ASTM D6469*	≥100000	<b>0</b>	---	---
Mold	Colonies	ASTM D6469*	MODER	<b>NONE</b>	---	---
Calcium	ppm	ASTM D5185(m)	<0.1	<b>&lt;1</b>	---	---
Magnesium	ppm	ASTM D5185(m)	<0.1	<b>0</b>	---	---
Phosphorus	ppm	ASTM D5185(m)	<0.1	<b>&lt;1</b>	---	---
Zinc	ppm	ASTM D5185(m)	<0.1	<b>&lt;1</b>	---	---
Specific Gravity		ASTM D1298*	0.839	<b>0.860</b>	---	---
Fuel Color	text	Visual Screen*	Yllow	<b>LtRed</b>	---	---
Visc @ 40°C	cSt	ASTM D7279(m)	3.0	<b>3</b>	---	---
Pensky-Martens Flash Point	°C	ASTM D7215*	52	<b>66.5</b>	---	---
Sulfur	ppm	ASTM D5185(m)	10	<b>7</b>	---	---
Initial Boiling Point	°C	ASTM D2887*	165	<b>181</b>	---	---
10% Distill Point	°C	ASTM D2887*	201	<b>218</b>	---	---
20% Distill Point	°C	ASTM D2887*	216	<b>231</b>	---	---
30% Distill Point	°C	ASTM D2887*	230	<b>244</b>	---	---
40% Distill Point	°C	ASTM D2887*	243	<b>256</b>	---	---
50% Distill Point	°C	ASTM D2887*	255	<b>267</b>	---	---
60% Distill Point	°C	ASTM D2887*	267	<b>281</b>	---	---
70% Distill Point	°C	ASTM D2887*	280	<b>295</b>	---	---
80% Distill Point	°C	ASTM D2887*	295	<b>311</b>	---	---
90% Distill Point	°C	ASTM D2887*	310	<b>333</b>	---	---
Final Boiling Point	°C	ASTM D2887*	341	<b>375</b>	---	---
API Gravity		ASTM D1298*	37.7	<b>33</b>	---	---
Cetane Index		ASTM D4737*	<40.0	<b>43</b>	---	---



ISO 17025:2017  
Accredited  
Laboratory

**Laboratory** : WearCheck - C8-1175 Appleby Line, Burlington, ON L7L 5H9  
**Sample No.** : CU0022755  
**Lab Number** : 02638716  
**Unique Number** : 5787878  
**Test Package** : FUEL ( Additional Tests: BACTERIA, CC Flash, MICROBES, PrtCount )

**Received** : 29 May 2024  
**Tested** : 11 Jun 2024  
**Diagnosed** : 11 Jun 2024 - Kevin Marson

**CUMMINS EASTERN CANADA LP**  
 6950 EDWARDS BLVD  
 MISSISSAUGA, ON  
 CA L5T 2W2  
 Contact: Jeffrey Moore  
 jeffrey.moore@cummins.com  
 T: (905)795-0050  
 F: (905)795-0035

To discuss this sample report, contact Customer Service at 1-800-268-2131.  
 Test denoted (\*) outside scope of accreditation, (m) method modified, (e) tested at external lab.  
 Validity of results and interpretation are based on the sample and information as supplied.