



# OIL ANALYSIS REPORT

WEAR	<b>NORMAL</b>
CONTAMINATION	<b>NORMAL</b>
FLUID CONDITION	<b>NORMAL</b>

Area  
**51000 series**  
 Machine Id  
**Navistar 51717**  
 Component  
**Diesel Engine**  
 Fluid  
**PETRO CANADA DURON SHP 10W30 (40 LTR)**

## RECOMMENDATION

Resample at the next service interval to monitor.

Test	UOM	Method	Limit/Abn	Current	History1	History2
Sample Number		Client Info		<b>WC0935044</b>	WC0854838	WC0844406
Sample Date		Client Info		<b>22 May 2024</b>	24 Sep 2023	23 Aug 2023
Machine Age	mls	Client Info		<b>663792</b>	663792	663792
Oil Age	mls	Client Info		<b>22000</b>	8086	8086
Filter Age	mls	Client Info		<b>22000</b>	8086	8086
Oil Changed		Client Info		<b>N/A</b>	Changed	Changed
Filter Changed		Client Info		<b>N/A</b>	Changed	N/A
Sample Status				<b>NORMAL</b>	NORMAL	NORMAL

## WEAR

All component wear rates are normal.

Iron	ppm	ASTM D5185(m)	>90	<b>29</b>	8	27
Chromium	ppm	ASTM D5185(m)	>20	<b>&lt;1</b>	0	1
Nickel	ppm	ASTM D5185(m)	>2	<b>0</b>	0	0
Titanium	ppm	ASTM D5185(m)	>2	<b>0</b>	0	0
Silver	ppm	ASTM D5185(m)	>2	<b>0</b>	<1	0
Aluminum	ppm	ASTM D5185(m)	>20	<b>3</b>	<1	2
Lead	ppm	ASTM D5185(m)	>40	<b>0</b>	<1	8
Copper	ppm	ASTM D5185(m)	>330	<b>&lt;1</b>	<1	2
Tin	ppm	ASTM D5185(m)	>15	<b>0</b>	0	<1
Vanadium	ppm	ASTM D5185(m)		<b>0</b>	0	0

## CONTAMINATION

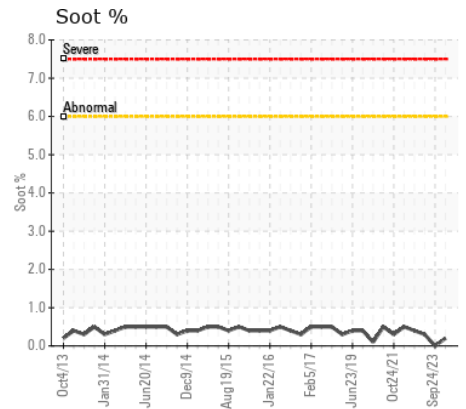
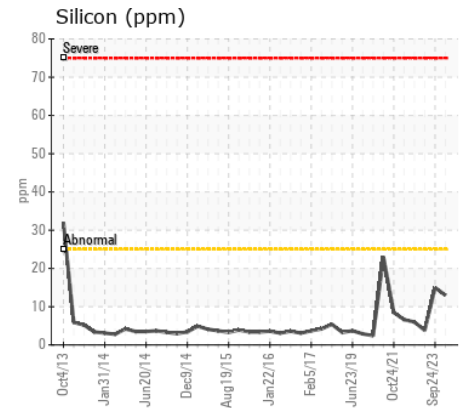
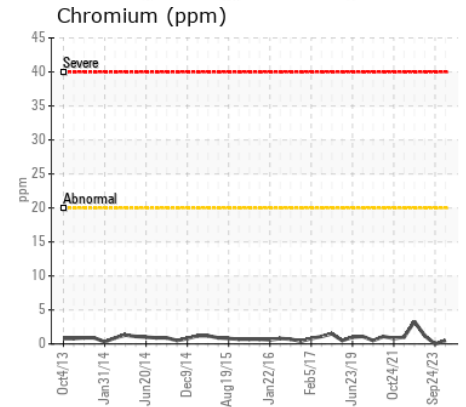
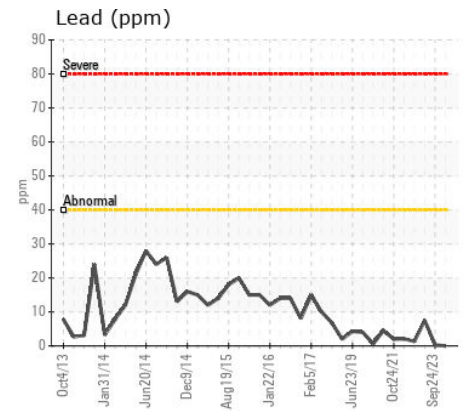
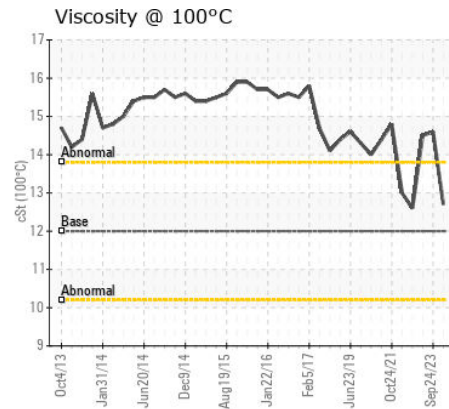
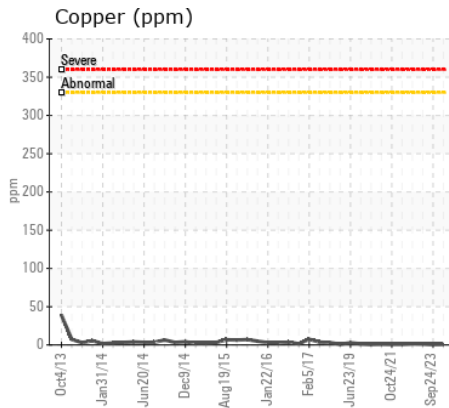
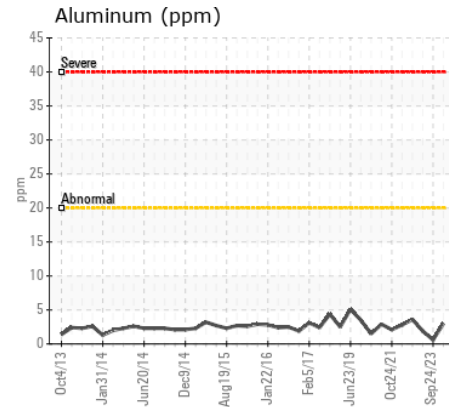
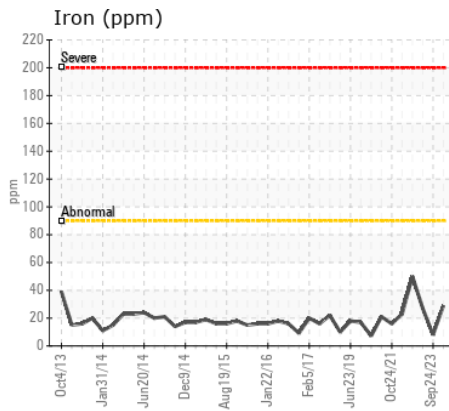
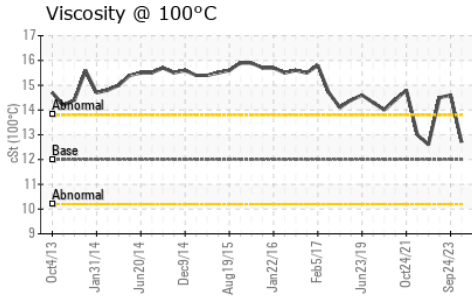
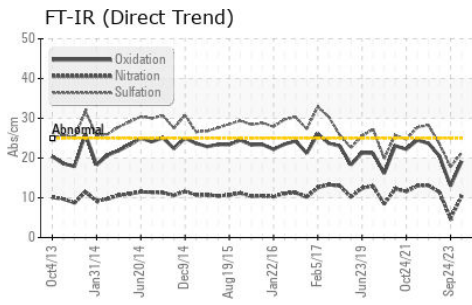
There is no indication of any contamination in the oil.

Silicon	ppm	ASTM D5185(m)	>25	<b>13</b>	15	4
Potassium	ppm	ASTM D5185(m)	>20	<b>&lt;1</b>	<1	<1
Fuel		WC Method	>3.0	<b>&lt;1.0</b>	<1.0	<1.0
Water		WC Method	>0.2	<b>NEG</b>	NEG	NEG
Glycol		WC Method		<b>NEG</b>	NEG	NEG
Soot %	%	ASTM D7844*	>6	<b>0.2</b>	0	0.3
Nitration	Abs/cm	ASTM D7624*	>20	<b>10.4</b>	4.8	11.4
Sulfation	Abs/.1mm	ASTM D7415*	>30	<b>21.3</b>	17.8	23.6
Emulsified Water	scalar	Visual*	>0.2	<b>NEG</b>	NEG	NEG

## FLUID CONDITION

The condition of the oil is acceptable for the time in service.

Sodium	ppm	ASTM D5185(m)		<b>2</b>	2	2
Boron	ppm	ASTM D5185(m)	2	<b>4</b>	3	7
Barium	ppm	ASTM D5185(m)	0	<b>0</b>	0	0
Molybdenum	ppm	ASTM D5185(m)	50	<b>64</b>	59	64
Manganese	ppm	ASTM D5185(m)	0	<b>&lt;1</b>	0	<1
Magnesium	ppm	ASTM D5185(m)	950	<b>1049</b>	963	1040
Calcium	ppm	ASTM D5185(m)	1050	<b>1153</b>	1048	1150
Phosphorus	ppm	ASTM D5185(m)	995	<b>1063</b>	1006	1116
Zinc	ppm	ASTM D5185(m)	1180	<b>1280</b>	1175	1279
Sulfur	ppm	ASTM D5185(m)	2600	<b>2626</b>	2629	2629
Oxidation	Abs/.1mm	ASTM D7414*	>25	<b>19.2</b>	13.0	20.5
Visc @ 100°C	cSt	ASTM D7279(m)	12.00	<b>12.7</b>	14.6	14.5



**Laboratory** : WearCheck - C8-1175 Appleby Line, Burlington, ON L7L 5H9  
**Sample No.** : WC0935044 **Received** : 06 Jun 2024  
**Lab Number** : 02640074 **Tested** : 06 Jun 2024  
**Unique Number** : 5789236 **Diagnosed** : 06 Jun 2024 - Wes Davis  
**Test Package** : MOB 1

**MANITOU LIN TRANSPORT**  
 75 MUMFORD ROAD  
 LIVELY, ON  
 CA P3Y 1L1  
 Contact: Todd Smith  
 tosmith@manitoulintransport.com  
 T: (705)562-3302  
 F: x:

To discuss this sample report, contact Customer Service at 1-800-268-2131.  
 Test denoted (\*) outside scope of accreditation, (m) method modified, (e) tested at external lab.  
 Validity of results and interpretation are based on the sample and information as supplied.