



FUEL REPORT

CORROSION	NORMAL
CONTAMINANTS	NORMAL
FUEL CONDITION	NORMAL

Area

[2016157]

Machine Id

UNDERGROUND #3-A

Component

Diesel Fuel

Fluid

DIESEL FUEL No. 2 (--- GAL)

RECOMMENDATION

Laboratory test indicate that this fuel is suitable for use and meets all test requirements. Resample at the next service interval to monitor.

Test	UOM	Method	Limit/Abn	Current	History1	History2
Sample Number		Client Info		WC0950436	---	---
Sample Date		Client Info		31 May 2024	---	---
Machine Age	hrs	Client Info		0	---	---
Sample Status				NORMAL	---	---

CORROSION

{not applicable}

Aluminum	ppm	ASTM D5185(m)	<0.1	0	---	---
Nickel	ppm	ASTM D5185(m)	<0.1	0	---	---
Lead	ppm	ASTM D5185(m)	<0.1	<1	---	---
Vanadium	ppm	ASTM D5185(m)	<0.1	0	---	---
Iron	ppm	ASTM D5185(m)	<0.1	<1	---	---

CONTAMINANTS

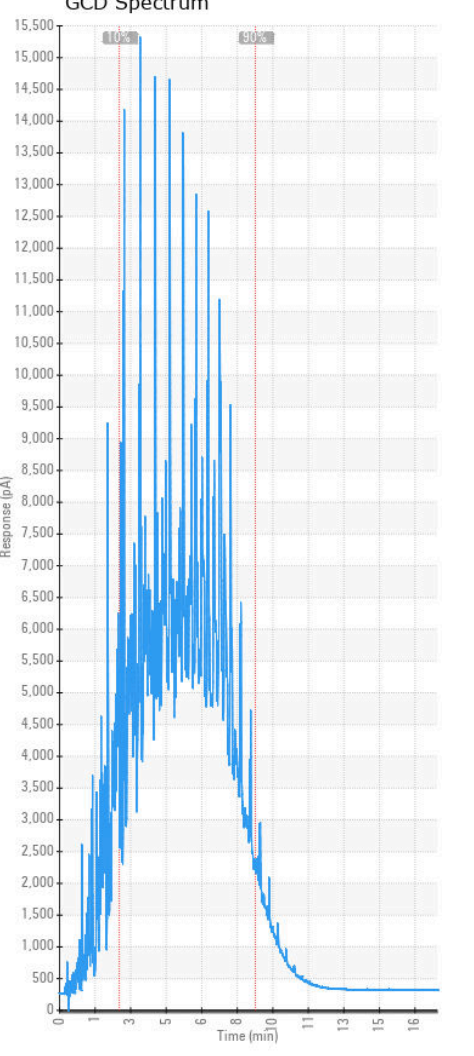
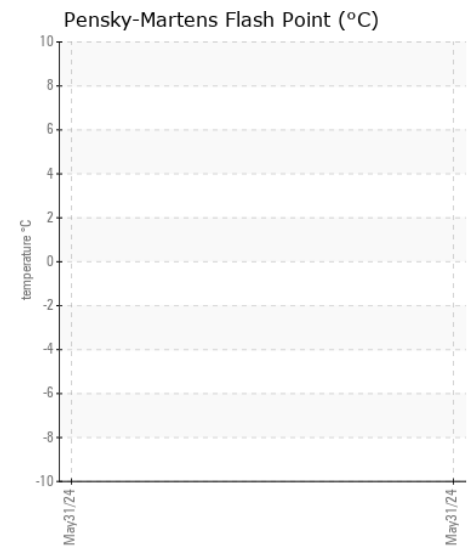
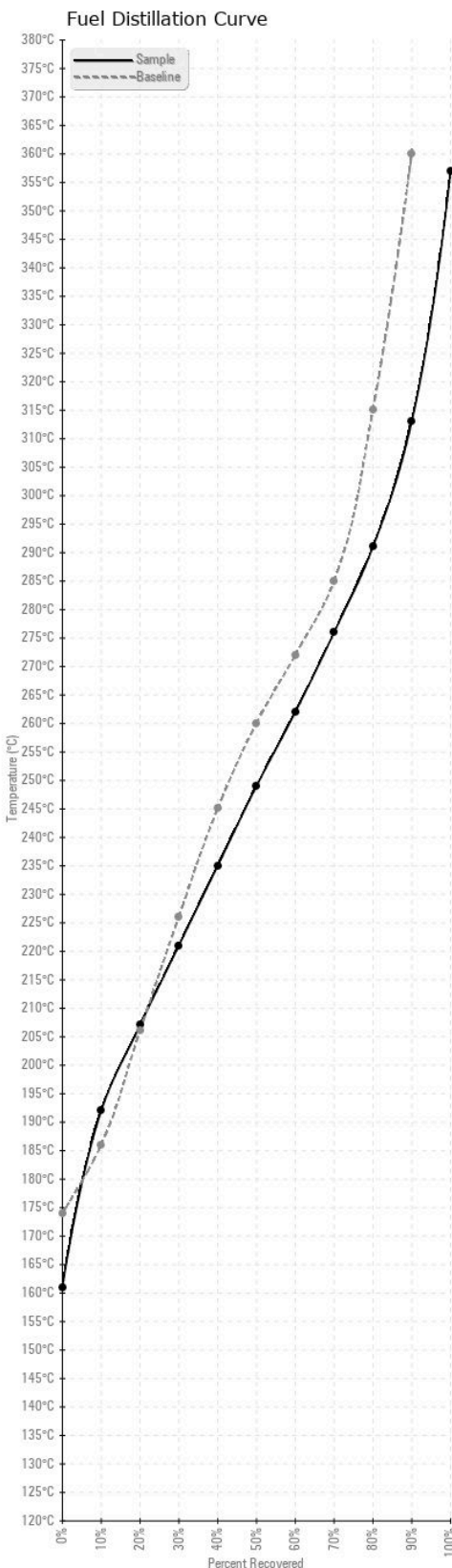
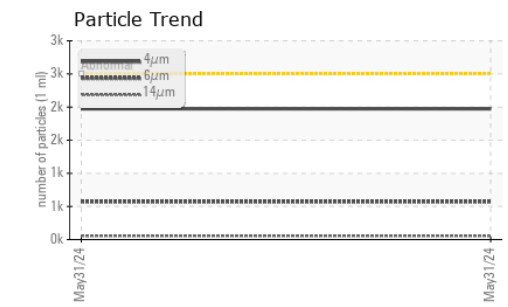
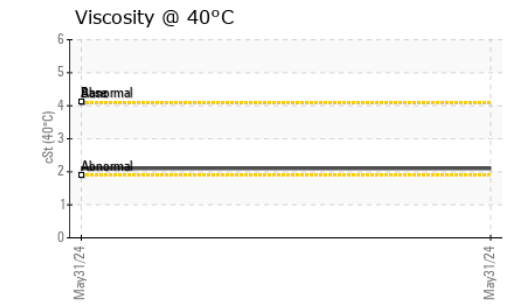
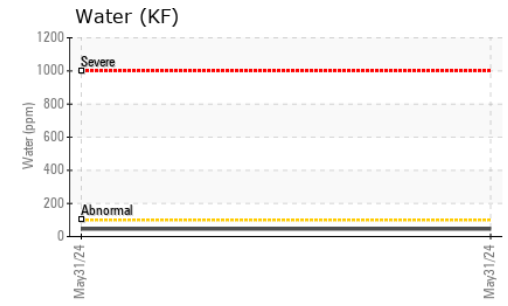
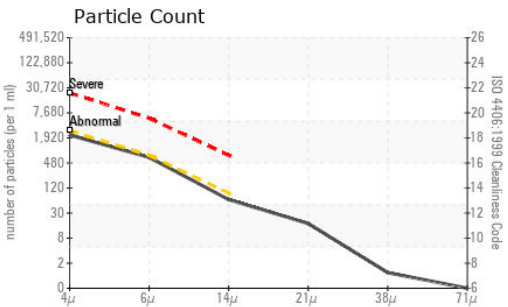
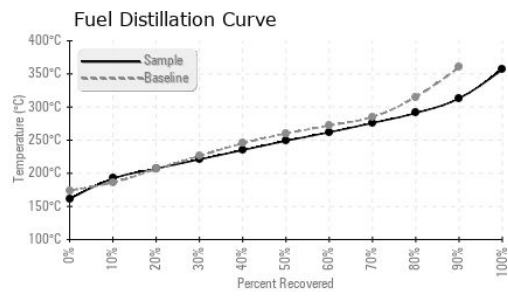
The system cleanliness is acceptable for your target ISO 4406 cleanliness code. The water content is negligible. There is no indication of any contamination in the diesel fuel.

Silicon	ppm	ASTM D5185(m)	<1.0	0	---	---
Sodium	ppm	ASTM D5185(m)	<0.1	<1	---	---
Potassium	ppm	ASTM D5185(m)	<0.1	0	---	---
Water	%	ASTM D6304*	<0.05	0.004	---	---
ppm Water	ppm	ASTM D6304*	<500	46	---	---
Particles >4µm		ASTM D7647	>2500	1973	---	---
Particles >6µm		ASTM D7647	>640	573	---	---
Particles >14µm		ASTM D7647	>80	56	---	---
Particles >21µm		ASTM D7647	>20	15	---	---
Particles >38µm		ASTM D7647	>4	1	---	---
Particles >71µm		ASTM D7647	>3	0	---	---
Oil Cleanliness		ISO 4406 (c)	>18/16/13	18/16/13	---	---
Calcium	ppm	ASTM D5185(m)	<0.1	0	---	---
Magnesium	ppm	ASTM D5185(m)	<0.1	0	---	---
Phosphorus	ppm	ASTM D5185(m)	<0.1	0	---	---
Zinc	ppm	ASTM D5185(m)	<0.1	0	---	---

FUEL CONDITION

All laboratory tests indicate that this sample meets specifications for No.2 diesel fuel, low sulfur (US EPA/CGSB-3.517-3 type B).

Specific Gravity		ASTM D1298*	0.850	0.827	---	---
Fuel Color	text	Visual Screen*	YELLOW	Pink	---	---
Visc @ 40°C	cSt	ASTM D7279(m)	4.1	2.1	---	---
Sulfur	ppm	ASTM D5185(m)		13	---	---
Initial Boiling Point	°C	ASTM D2887*	174	161	---	---
10% Distill Point	°C	ASTM D2887*	186	192	---	---
20% Distill Point	°C	ASTM D2887*	206	207	---	---
30% Distill Point	°C	ASTM D2887*	226	221	---	---
40% Distill Point	°C	ASTM D2887*	245	235	---	---
50% Distill Point	°C	ASTM D2887*	260	249	---	---
60% Distill Point	°C	ASTM D2887*	272	262	---	---
70% Distill Point	°C	ASTM D2887*	285	276	---	---
80% Distill Point	°C	ASTM D2887*	315	291	---	---
90% Distill Point	°C	ASTM D2887*	360	313	---	---
Final Boiling Point	°C	ASTM D2887*	>360	357	---	---
API Gravity		ASTM D1298*	35.0	39	---	---
Cetane Index		ASTM D4737*	<40.0	50	---	---



Laboratory : WearCheck - C8-1175 Appleby Line, Burlington, ON L7L 5H9
Sample No. : WC0950436 **Received** : 10 Jun 2024
Lab Number : 02640916 **Tested** : 13 Jun 2024
Unique Number : 5798455 **Diagnosed** : 13 Jun 2024 - Kevin Marson
Test Package : FUEL (Additional Tests: PrtCount)

To discuss this sample report, contact Customer Service at 1-800-268-2131.
 Test denoted (*) outside scope of accreditation, (m) method modified, (e) tested at external lab.
 Validity of results and interpretation are based on the sample and information as supplied.

HONEYWELL
 1929 OGILVIE RD
 GLOUCESTER, ON
 CA K1J 0B9
 Contact: Alain Guindon
 joseph.guindon@cse-cst.gc.ca
 T: (613)991-2659
 F: