



FUEL REPORT

CORROSION	NORMAL
CONTAMINANTS	ABNORMAL
FUEL CONDITION	NORMAL

Area

[2016157]

Machine Id

UNDERGROUND #3-B

Component

Diesel Fuel

Fluid

DIESEL FUEL No. 2 (--- GAL)

RECOMMENDATION

Laboratory test indicate that this fuel is suitable for use and meets all test requirements. We advise that you filter this fluid before use. We recommend you service the filters on this component. We recommend an early resample to monitor this condition.

CORROSION

{not applicable}

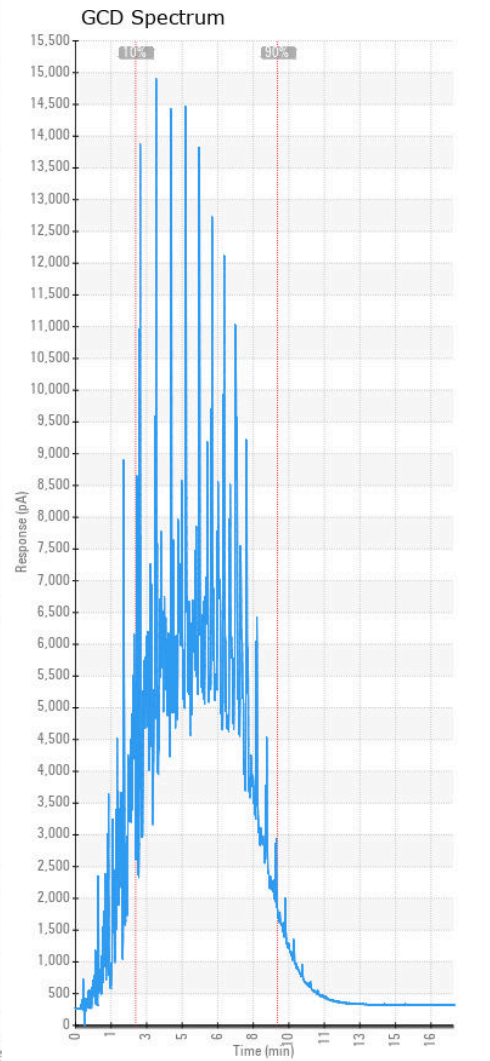
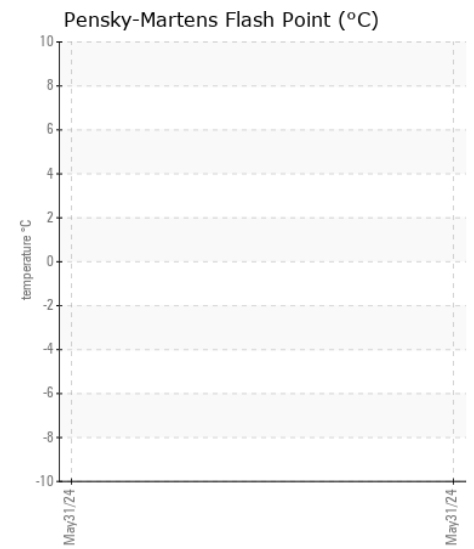
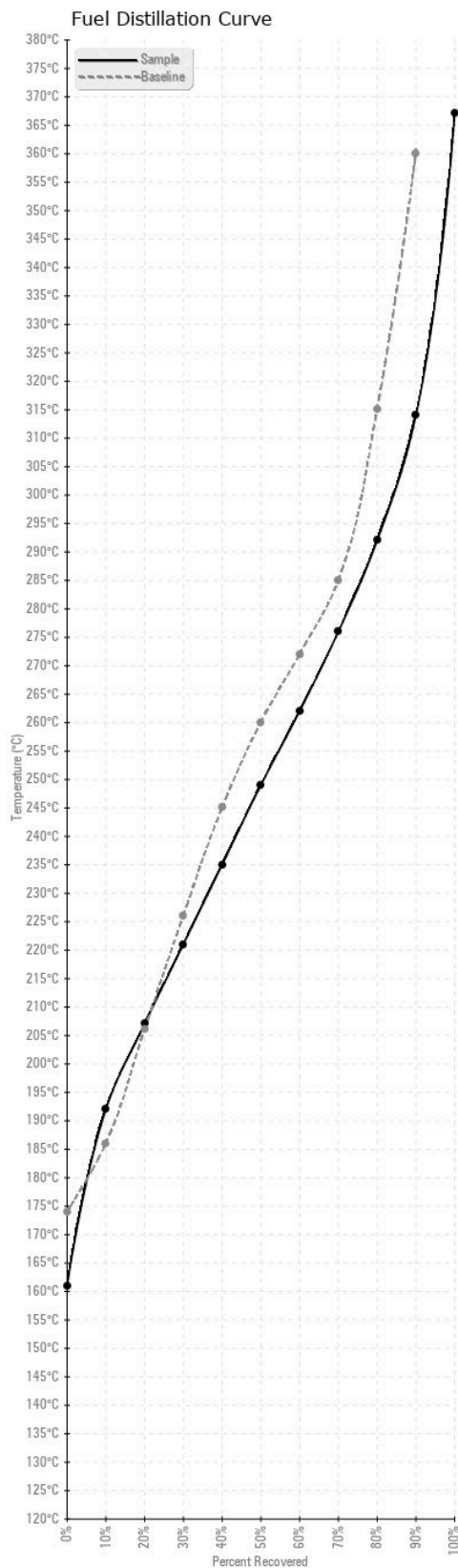
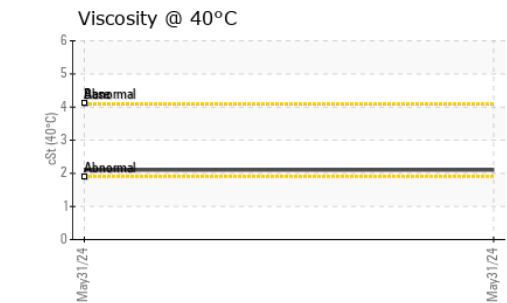
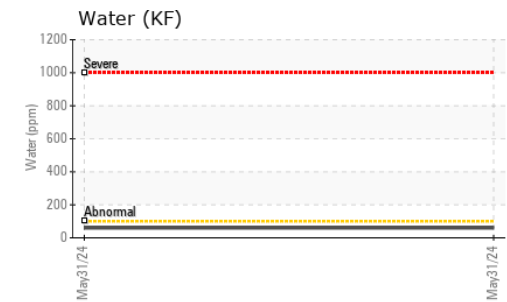
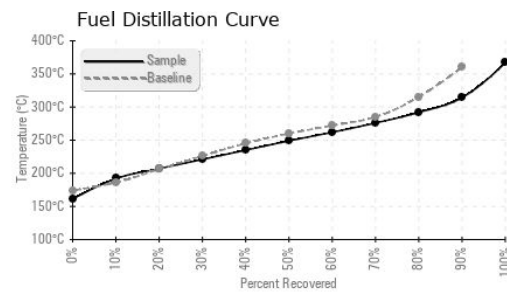
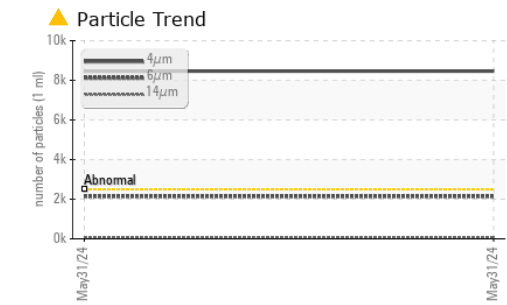
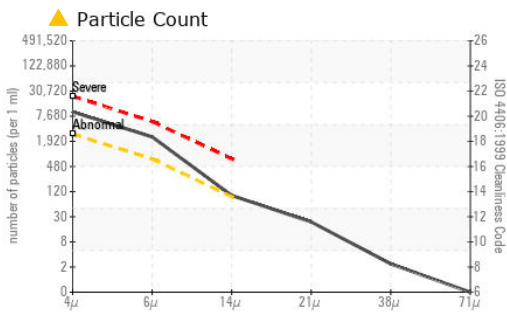
CONTAMINANTS

There is a moderate amount of silt (particulates < 14 microns in size) present in the fuel. The water content is negligible.

FUEL CONDITION

All laboratory tests indicate that this sample meets specifications for No.2 diesel fuel, low sulfur (US EPA/CGSB-3.517-3 type B). The fuel is still serviceable provided that the contaminant(s) can be reduced to acceptable levels.

Test	UOM	Method	Limit/Abn	Current	History1	History2
Sample Number		Client Info		WC0950437	---	---
Sample Date		Client Info		31 May 2024	---	---
Machine Age	hrs	Client Info		0	---	---
Sample Status				ABNORMAL	---	---
Aluminum	ppm	ASTM D5185(m)	<0.1	0	---	---
Nickel	ppm	ASTM D5185(m)	<0.1	0	---	---
Lead	ppm	ASTM D5185(m)	<0.1	<1	---	---
Vanadium	ppm	ASTM D5185(m)	<0.1	0	---	---
Iron	ppm	ASTM D5185(m)	<0.1	<1	---	---
Silicon	ppm	ASTM D5185(m)	<1.0	0	---	---
Sodium	ppm	ASTM D5185(m)	<0.1	<1	---	---
Potassium	ppm	ASTM D5185(m)	<0.1	0	---	---
Water	%	ASTM D6304*	<0.05	0.005	---	---
ppm Water	ppm	ASTM D6304*	<500	60	---	---
Particles >4µm		ASTM D7647	>2500	▲ 8462	---	---
Particles >6µm		ASTM D7647	>640	▲ 2144	---	---
Particles >14µm		ASTM D7647	>80	● 86	---	---
Particles >21µm		ASTM D7647	>20	20	---	---
Particles >38µm		ASTM D7647	>4	2	---	---
Particles >71µm		ASTM D7647	>3	0	---	---
Oil Cleanliness		ISO 4406 (c)	>18/16/13	▲ 20/18/14	---	---
Calcium	ppm	ASTM D5185(m)	<0.1	0	---	---
Magnesium	ppm	ASTM D5185(m)	<0.1	0	---	---
Phosphorus	ppm	ASTM D5185(m)	<0.1	0	---	---
Zinc	ppm	ASTM D5185(m)	<0.1	0	---	---
Specific Gravity		ASTM D1298*	0.850	0.826	---	---
Fuel Color	text	Visual Screen*	YELLOW	Pink	---	---
Visc @ 40°C	cSt	ASTM D7279(m)	4.1	2.1	---	---
Sulfur	ppm	ASTM D5185(m)		12	---	---
Initial Boiling Point	°C	ASTM D2887*	174	161	---	---
10% Distill Point	°C	ASTM D2887*	186	192	---	---
20% Distill Point	°C	ASTM D2887*	206	207	---	---
30% Distill Point	°C	ASTM D2887*	226	221	---	---
40% Distill Point	°C	ASTM D2887*	245	235	---	---
50% Distill Point	°C	ASTM D2887*	260	249	---	---
60% Distill Point	°C	ASTM D2887*	272	262	---	---
70% Distill Point	°C	ASTM D2887*	285	276	---	---
80% Distill Point	°C	ASTM D2887*	315	292	---	---
90% Distill Point	°C	ASTM D2887*	360	314	---	---
Final Boiling Point	°C	ASTM D2887*	>360	367	---	---
API Gravity		ASTM D1298*	35.0	39	---	---
Cetane Index		ASTM D4737*	<40.0	50	---	---



ISO 17025:2017  
Accredited  
Laboratory

**Laboratory** : WearCheck - C8-1175 Appleby Line, Burlington, ON L7L 5H9  
**Sample No.** : WC0950437  
**Lab Number** : 02640917  
**Unique Number** : 5798456  
**Test Package** : FUEL ( Additional Tests: PrtCount )

**Received** : 10 Jun 2024  
**Tested** : 13 Jun 2024  
**Diagnosed** : 13 Jun 2024 - Kevin Marson

To discuss this sample report, contact Customer Service at 1-800-268-2131.  
 Test denoted (\*) outside scope of accreditation, (m) method modified, (e) tested at external lab.  
 Validity of results and interpretation are based on the sample and information as supplied.

**HONEYWELL**  
 1929 OGILVIE RD  
 GLOUCESTER, ON  
 CA K1J 0B9  
 Contact: Alain Guindon  
 joseph.guindon@cse-cst.gc.ca  
 T: (613)991-2659  
 F: