



FUEL REPORT

CORROSION	NORMAL
CONTAMINANTS	NORMAL
FUEL CONDITION	NORMAL

Machine Id
PENSKE GT UU5647

Component
Diesel Fuel

Fluid
No.2 DIESEL FUEL (ULTRALOW SULPHUR) (--- GAL)

RECOMMENDATION

Laboratory test indicate that this fuel is suitable for use and meets all test requirements. Resample at the next service interval to monitor.

Test	UOM	Method	Limit/Abn	Current	History1	History2
Sample Number		Client Info		WC0799416	---	---
Sample Date		Client Info		10 Jun 2024	---	---
Machine Age	hrs	Client Info		0	---	---
Sample Status				NORMAL	---	---

CORROSION

{not applicable}

Aluminum	ppm	ASTM D5185(m)	<0.1	0	---	---
Nickel	ppm	ASTM D5185(m)	<0.1	0	---	---
Lead	ppm	ASTM D5185(m)	<0.1	0	---	---
Vanadium	ppm	ASTM D5185(m)	<0.1	0	---	---
Iron	ppm	ASTM D5185(m)	<0.1	0	---	---

CONTAMINANTS

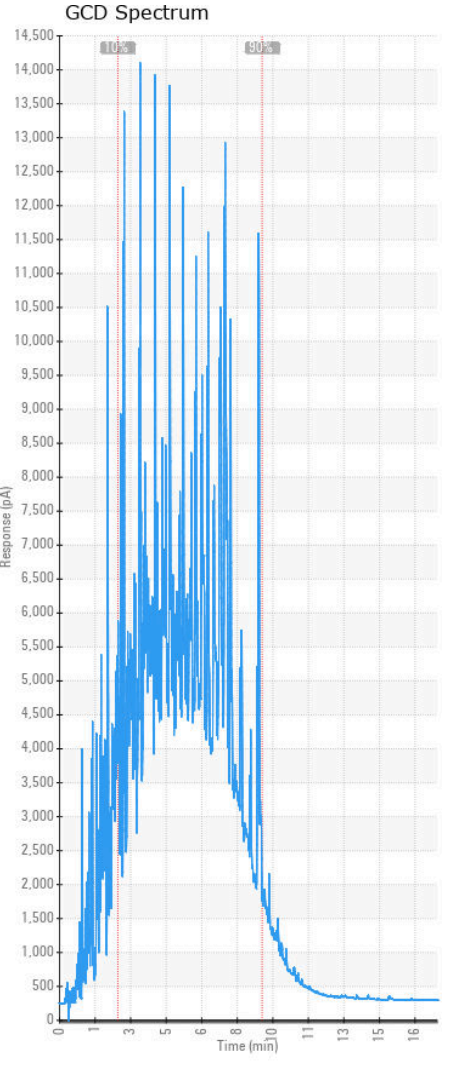
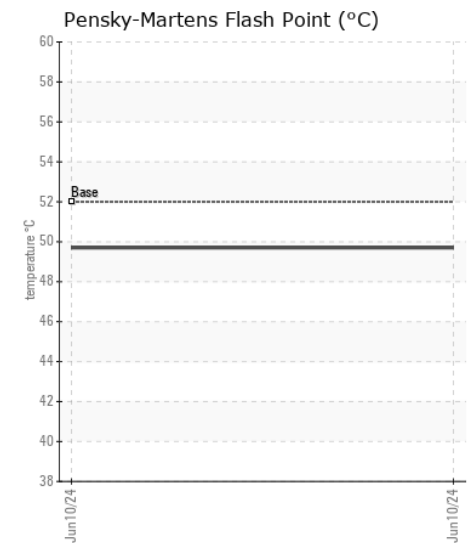
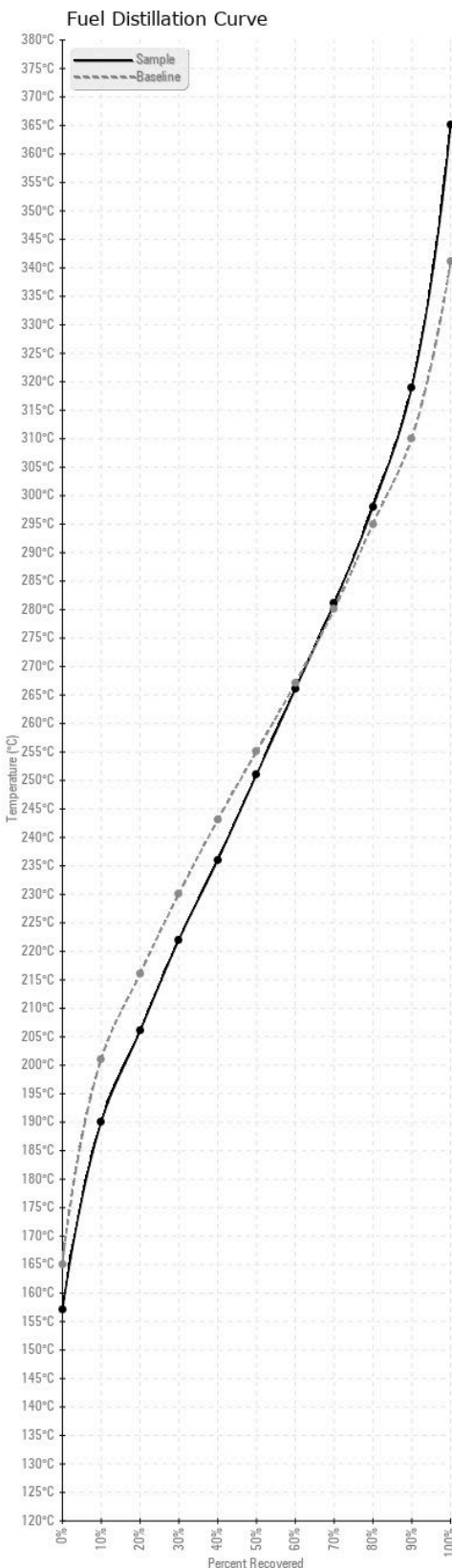
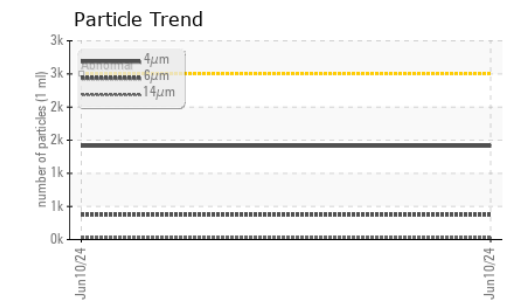
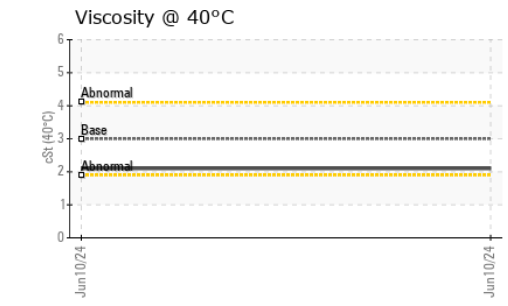
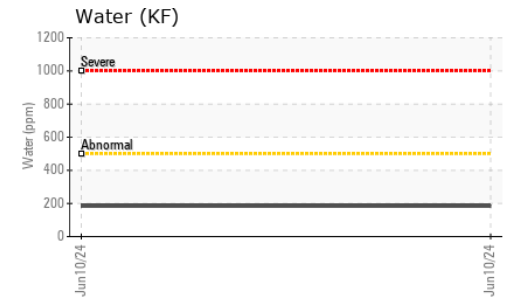
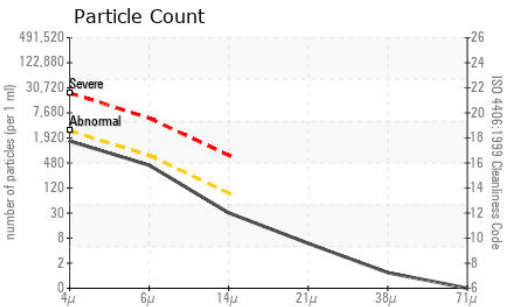
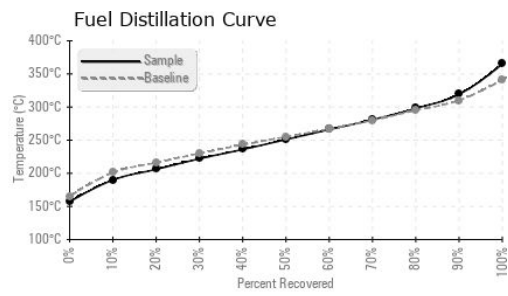
There is no bacteria or fungus (yeast and/or mold) present in the sample. The system cleanliness is acceptable for your target ISO 4406 cleanliness code. The water content is negligible. There is no indication of any contamination in the diesel fuel.

Silicon	ppm	ASTM D5185(m)	<1.0	0	---	---
Sodium	ppm	ASTM D5185(m)	<0.1	<1	---	---
Potassium	ppm	ASTM D5185(m)	<0.1	0	---	---
Water	%	ASTM D6304*	<0.05	0.018	---	---
ppm Water	ppm	ASTM D6304*	<500	184	---	---
Particles >4µm		ASTM D7647	>2500	1413	---	---
Particles >6µm		ASTM D7647	>640	373	---	---
Particles >14µm		ASTM D7647	>80	27	---	---
Particles >21µm		ASTM D7647	>20	5	---	---
Particles >38µm		ASTM D7647	>4	1	---	---
Particles >71µm		ASTM D7647	>3	0	---	---
Oil Cleanliness		ISO 4406 (c)	>18/16/13	18/16/12	---	---
Bacteria	CFU/ml	ASTM D6469*	≥100000	0	---	---
Yeast	CFU/ml	ASTM D6469*	≥100000	0	---	---
Mold	Colonies	ASTM D6469*	MODER	NONE	---	---
Calcium	ppm	ASTM D5185(m)	<0.1	0	---	---
Magnesium	ppm	ASTM D5185(m)	<0.1	0	---	---
Phosphorus	ppm	ASTM D5185(m)	<0.1	0	---	---
Zinc	ppm	ASTM D5185(m)	<0.1	0	---	---

FUEL CONDITION

All laboratory tests indicate that this sample meets specifications for No.2 ultra-low-sulfur diesel fuel (US EPA/CGSB-3.517-3 type B).

Specific Gravity		ASTM D1298*	0.839	0.830	---	---
Fuel Color	text	Visual Screen*	Yllow	Yllow	---	---
Visc @ 40°C	cSt	ASTM D7279(m)	3.0	2.1	---	---
Pensky-Martens Flash Point	°C	ASTM D7215*	52	49.7	---	---
Sulfur	ppm	ASTM D5185(m)	10	9	---	---
Initial Boiling Point	°C	ASTM D2887*	165	157	---	---
10% Distill Point	°C	ASTM D2887*	201	190	---	---
20% Distill Point	°C	ASTM D2887*	216	206	---	---
30% Distill Point	°C	ASTM D2887*	230	222	---	---
40% Distill Point	°C	ASTM D2887*	243	236	---	---
50% Distill Point	°C	ASTM D2887*	255	251	---	---
60% Distill Point	°C	ASTM D2887*	267	266	---	---
70% Distill Point	°C	ASTM D2887*	280	281	---	---
80% Distill Point	°C	ASTM D2887*	295	298	---	---
90% Distill Point	°C	ASTM D2887*	310	319	---	---
Final Boiling Point	°C	ASTM D2887*	341	365	---	---
API Gravity		ASTM D1298*	37.7	38	---	---
Cetane Index		ASTM D4737*	<40.0	49	---	---



Laboratory : WearCheck - C8-1175 Appleby Line, Burlington, ON L7L 5H9
Sample No. : WC0799416 **Received** : 12 Jun 2024
Lab Number : 02641549 **Tested** : 19 Jun 2024
Unique Number : 5799088 **Diagnosed** : 19 Jun 2024 - Kevin Marson
Test Package : FUEL (Additional Tests: Bacteria, CC Flash, PrtCount)

FRANCIS TRUCK CENTRE
 3818 RUSSELL RD
 OTTAWA, ON
 CA K1G 3N2
 Contact: Matt Tuckey
 matt.tuckey@fctci.com
 T: (613)744-0974
 F: (613)744-8952

To discuss this sample report, contact Customer Service at 1-800-268-2131.
 Test denoted (*) outside scope of accreditation, (m) method modified, (e) tested at external lab.
 Validity of results and interpretation are based on the sample and information as supplied.