



FUEL REPORT

CORROSION	NORMAL
CONTAMINANTS	ATTENTION
FUEL CONDITION	NORMAL

Area

[155885]

Machine Id

33222628

Component

Diesel Fuel

Fluid

No.2 DIESEL FUEL (ULTRALOW SULPHUR) (--- GAL)

RECOMMENDATION

Laboratory test indicate that this fuel is suitable for use and meets all test requirements. We advise that you filter this fluid before use. The filter change at the time of sampling has been noted. Resample at the next service interval to monitor.

CORROSION

{not applicable}

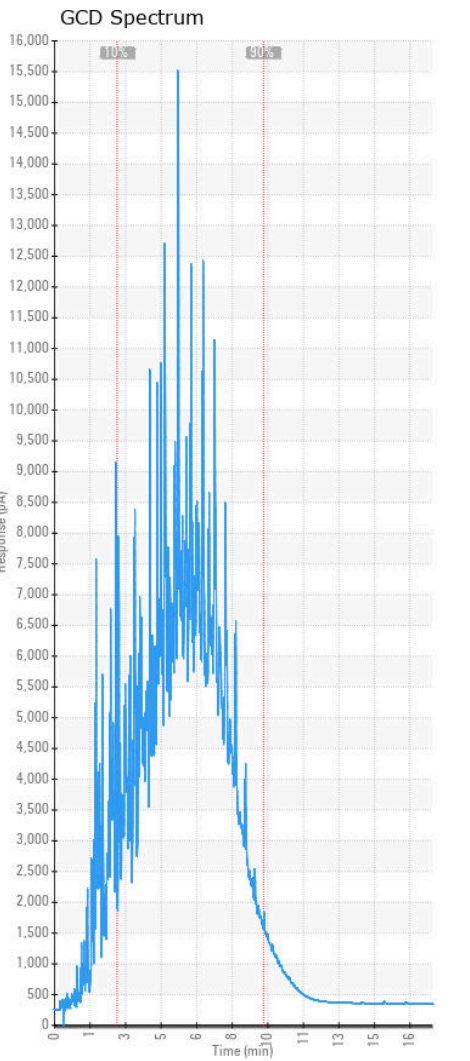
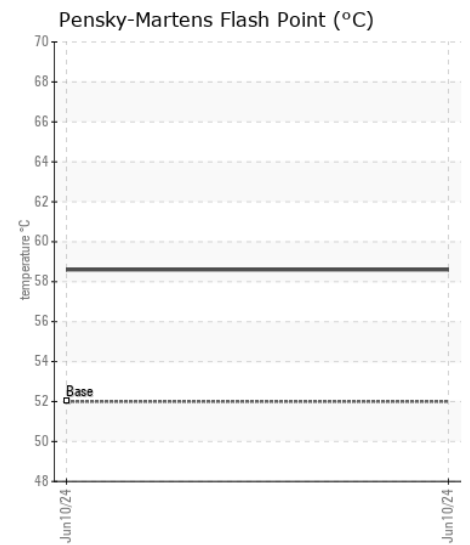
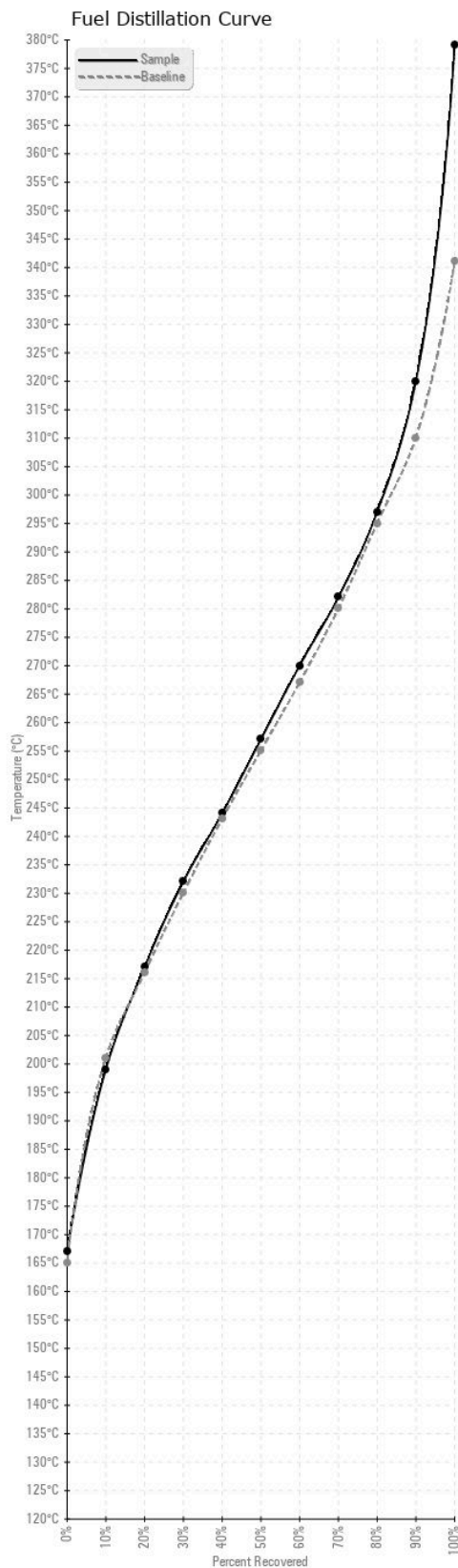
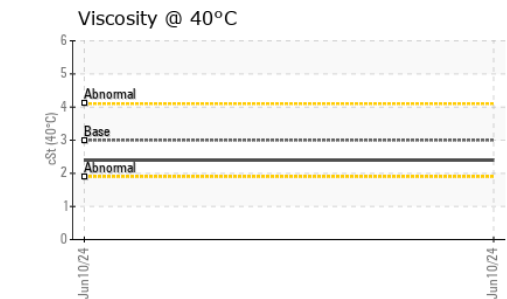
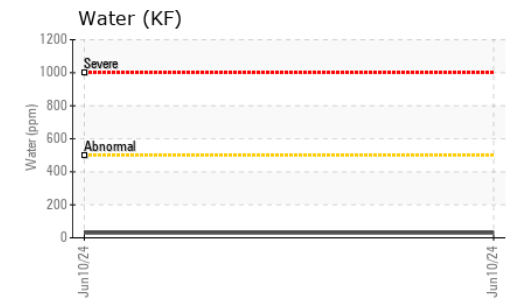
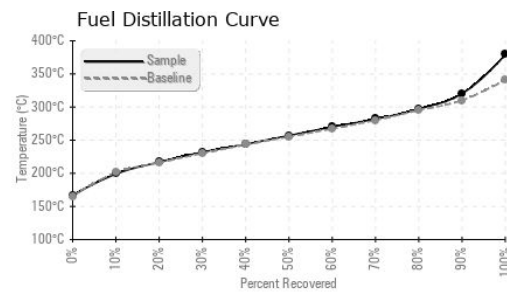
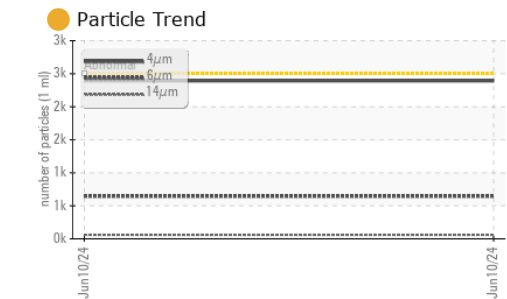
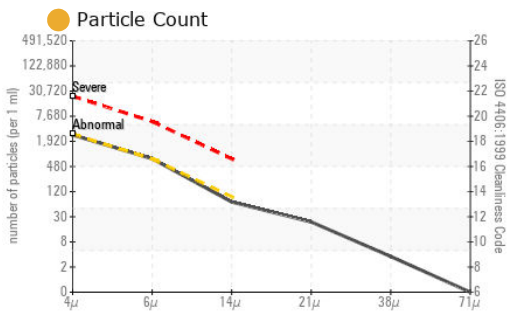
CONTAMINANTS

There is a light amount of silt (particulates < 14 microns in size) present in the fuel. The water content is negligible.

FUEL CONDITION

All laboratory tests indicate that this sample meets specifications for No.2 ultra-low-sulfur diesel fuel (US EPA/CGSB-3.517-3 type B).

Test	UOM	Method	Limit/Abn	Current	History1	History2
Sample Number		Client Info		CU0023270	---	---
Sample Date		Client Info		10 Jun 2024	---	---
Machine Age	hrs	Client Info		39	---	---
Sample Status				ATTENTION	---	---
Aluminum	ppm	ASTM D5185(m)	<0.1	0	---	---
Nickel	ppm	ASTM D5185(m)	<0.1	0	---	---
Lead	ppm	ASTM D5185(m)	<0.1	0	---	---
Vanadium	ppm	ASTM D5185(m)	<0.1	0	---	---
Iron	ppm	ASTM D5185(m)	<0.1	0	---	---
Silicon	ppm	ASTM D5185(m)	<1.0	0	---	---
Sodium	ppm	ASTM D5185(m)	<0.1	0	---	---
Potassium	ppm	ASTM D5185(m)	<0.1	0	---	---
Water	%	ASTM D6304*	<0.05	0.003	---	---
ppm Water	ppm	ASTM D6304*	<500	30	---	---
Particles >4µm		ASTM D7647	>2500	2393	---	---
Particles >6µm		ASTM D7647	>640	647	---	---
Particles >14µm		ASTM D7647	>80	60	---	---
Particles >21µm		ASTM D7647	>20	20	---	---
Particles >38µm		ASTM D7647	>4	3	---	---
Particles >71µm		ASTM D7647	>3	0	---	---
Oil Cleanliness		ISO 4406 (c)	>18/16/13	18/17/13	---	---
Calcium	ppm	ASTM D5185(m)	<0.1	0	---	---
Magnesium	ppm	ASTM D5185(m)	<0.1	0	---	---
Phosphorus	ppm	ASTM D5185(m)	<0.1	<1	---	---
Zinc	ppm	ASTM D5185(m)	<0.1	<1	---	---
Specific Gravity		ASTM D1298*	0.839	0.851	---	---
Fuel Color	text	Visual Screen*	Yellow	Red	---	---
Visc @ 40°C	cSt	ASTM D7279(m)	3.0	2.4	---	---
Pensky-Martens Flash Point	°C	ASTM D7215*	52	58.6	---	---
Sulfur	ppm	ASTM D5185(m)	10	13	---	---
Initial Boiling Point	°C	ASTM D2887*	165	167	---	---
10% Distill Point	°C	ASTM D2887*	201	199	---	---
20% Distill Point	°C	ASTM D2887*	216	217	---	---
30% Distill Point	°C	ASTM D2887*	230	232	---	---
40% Distill Point	°C	ASTM D2887*	243	244	---	---
50% Distill Point	°C	ASTM D2887*	255	257	---	---
60% Distill Point	°C	ASTM D2887*	267	270	---	---
70% Distill Point	°C	ASTM D2887*	280	282	---	---
80% Distill Point	°C	ASTM D2887*	295	297	---	---
90% Distill Point	°C	ASTM D2887*	310	320	---	---
Final Boiling Point	°C	ASTM D2887*	341	379	---	---
API Gravity		ASTM D1298*	37.7	34	---	---
Cetane Index		ASTM D4737*	<40.0	43	---	---



ISO 17025:2017
Accredited
Laboratory

Laboratory : WearCheck - C8-1175 Appleby Line, Burlington, ON L7L 5H9
Sample No. : CU0023270
Lab Number : 02643553
Unique Number : 5801092
Test Package : FUEL (Additional Tests: CC Flash, PrtCount)

CUMMINS CANADA ULC - GENERATOR DIVISION
 7175 PACIFIC CIRCLE
 MISSISSAUGA, ON
 CA L5T 2A5
 Contact: Elisia Johnson
 elisia.johnson@cummins.com
 T: (905)795-0050
 F: (905)795-9252

To discuss this sample report, contact Customer Service at 1-800-268-2131.
 Test denoted (*) outside scope of accreditation, (m) method modified, (e) tested at external lab.
 Validity of results and interpretation are based on the sample and information as supplied.